

***Modisimus cavaticus* Petrunkevitch, 1929**

Petrunkevitch, A. 1929. The spiders of Porto Rico. Trans. Connect. Acad. Arts Sci. 30: 1-158.

p. 126

***Modisimus cavaticus* sp. nov.** (Figures 113 and 114).

This species is not uncommon in the darker portions of the great cave at Aguas Buenas. It makes a dome-shaped web in which it hangs and if disturbed, shakes the web with violence and great speed. It runs swiftly and is for this reason difficult to catch as it easily gets out of the rays of the lantern into the dark crevices of the walls of the cave. I captured two young specimens in September and one young specimen and one mature female (Type) on November 27 in total darkness.

Female Type. Total length 3.32 mm. Carapace 1.5 mm. long, 1.5 mm. wide, with deep, line-like thoracic groove. Eye-turret with a hump behind the eyegroup, which is practically the same as in *M. signatus*. AME very small. Clypeus high and only as wide as the turret. *Chelicerae, maxillae, lip* and *sternum* as in *M. signatus*. *Legs* 1243.

	Femur	Pat. + Tib.	Metatarsus	Tarsus	Total
I	12.0	12.0	20.2	2.5	46.7
II	7.6	7.6	11.4	1.8	27.4
III	6.3	5.7	8.1	1.5	21.6
IV	8.5	7.6	11.9	1.6	24.6

Width of first patella at the "knee" 0.2618 mm. Tibial Index 2.

Width of fourth patella at the "knee" 0.2380 mm. Tibial Index 3.

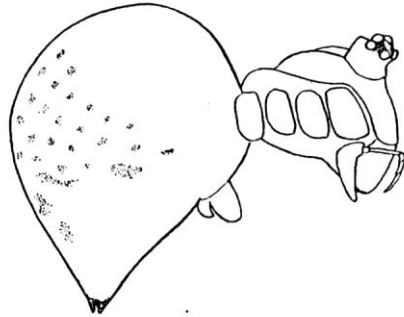


FIGURE 113. *Modisimus cavaticus* sp. nov. Type. Sideview of female.

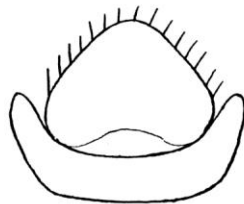


FIGURE 114. *Modisimus cavaticus* sp. nov. Type. Epigynum viewed from behind.

Tarsi multijointed, with onychium. Claws 3. Upper claws with a series of about 12 teeth of which only the two distal ones are long. Third claw with a single tooth. No spines on legs. Abdomen of the *Theridion* type (Figure 113). Epigynum (Figure 114) brown, very prominent, consisting of a cone followed by a ridge with two horns. *Color in alcohol*: Legs, carapace, chelicerae, lip and maxillae brown. Sternum yellow with a broad, brown, median, longitudinal band. Abdomen above, greenish grey with almost purple spots, below, uniformly greenish grey except for a small, slightly sclerotized area half way between epi-

gynum and spinnerets. The spider resembles *signatus*, but is somewhat smaller, has a differently shaped abdomen and lacks the dark mid-ventral band on the abdomen.