

***Modisimus montanus dentatus* Petrunkevitch, 1929**

Petrunkevitch, A. 1929. The spiders of Porto Rico. Trans. Connect. Acad. Arts Sci. 30: 1-158.

p. 135

***Modisimus montanus* varietas *dentatus*.**

The variety to be described here is represented by a single male and a single female with 13 eggs, which I captured on October 11, 1925, on shrubs on the forest trail on El Yunque at an altitude of about 2,000 feet.

a) *Male*. Total length 2.20 mm. Carapace 1.52 mm. long, if measured only from posterior end to anterior edge of eyes, 1.80 mm. wide, with slightly emarginate posterior margin and a deep,

p. 136

longitudinal thoracic groove which begins at the base of the turret but does not quite reach posterior margin. Clypeus slanting in a curve, much higher than thoracic portion of carapace in ratio 20:12. Eyes 8. AME small, contiguous with each other and with the ALE. First row of eyes straight by anterior edges

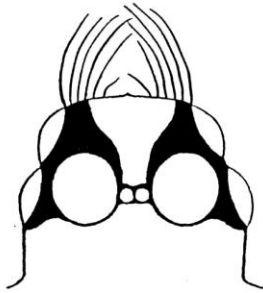


FIGURE 125. *Modisimus montanus*, var. *dentatus*. Type. Frontview of turret with eyes in male.

(Figure 125). Eyes composing a triad subcontiguous with each other. Ratio of eyes AME:ALE:PME:PLE = 1:5:3.5:3.5. PME separated from each other by two of their diameters. Turret with two tufts of hair. Carapace almost glabrous, with a few

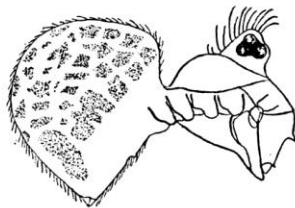


FIGURE 126. *Modisimus montanus*, var. *dentatus*. Type. Sideview of male, showing the two teeth on the basal joint of the chelicerae, and the coloration of the abdomen.

stiff, short hairs and a sparse fringe of similar hairs on lateral edges. *Chelicerae* without boss, stout (Figure 126) with short, transverse margins and a sharp tooth at their juncture, with two teeth in front, one near end as in type, the other larger, sharp, in a direct line with the former, but nearer base. The surface between the two frontal teeth is slightly concave. *Maxillae* inclined

over lip and meeting in median line in front of it. They are longer than the chelicerae, protruding sufficiently beyond the latter to allow clear vision of the serrulae when viewed from in front. *Lip* wide, immobile, fused with sternum, but with a slight depression between them. *Sternum* of the same shape as in the type, wider than long in ratio 30:25, truncated between the hind coxae which are separated from each other by $14/10$ of their width. First coxae wide apart. All coxae with ventral inflation. *Legs* 1243.

	Femur	Pat. + Tib.	Metatarsus	Tarsus	Total
I	3.60	4.12	5.88	1.36	14.96
II	2.64	2.92	3.64	0.90	10.10
III	2.16	2.24	2.84	0.80	8.04
IV	2.40	2.64	3.20	0.80	9.04

Width of first patella at the "knee" 0.1666 mm. Tibial Index 4.

Width of fourth patella at the "knee" 0.1666 mm. Tibial Index 6.

No spines on legs. First, second and third metatarsi and tibiae with several rows of recurved hairs. Tarsi multijointed, with onychium. Claws 3. Upper claws on first leg with 5 long teeth. Third claw with a single tooth. Abdomen as in type. Female is indistinguishable from the specific type. Chelicerae without frontal teeth.