

***Modisimus sexoculatus* Petrunkevitch, 1929**

Petrunkevitch, A. 1929. The spiders of Porto Rico. Trans. Connect. Acad. Arts Sci. 30: 1-158.

p. 137

***Modisimus sexoculatus* sp. nov.** (Figures 127 to 131).

This is a common species found everywhere on the island on vegetation, from the coast to the highest altitudes. It lives near the edge of woods. I have specimens from the following localities:

1) Tetuan Mountain near Jayuya, altitude 3,500 feet, 4 males swept from plants on path through coffee plantation on December 31, 1925. 1 immature male and 1 female from the same locality, in the coffee plantation at an altitude of 3,000 feet.

2) Bayamon, December 7, 1925, 1 male and 1 female on vegetation along the road.

3) Jayuya, December 29, 1925, one female under the leaf of a banana plant on the road to Ciales.

4) El Yunque, October 11, 1925, 1 young, several males and females on vegetation along the forest trail at an altitude of between 1,500 and 2,000 feet.

- 5) Embarcadero Point, October 10, 1925, 1 female in the hollow of a sea-grape trunk.
- 6) Puerto Nuevo Point near Vega Baja, October 25, 1925, 1 male and 1 female in the hollow of a cocoanut on the beach.
- 7) Rio Piedras, November 14, 1925, 1 male and 1 female in

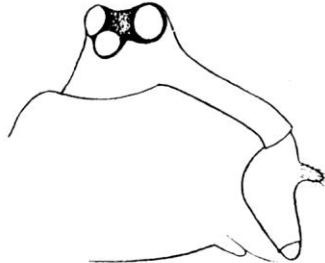


FIGURE 127. *Modisimus sexoculatus* sp. nov. Type. Sideview of Turret, Clypeus and Chelicerae of male, showing also the anterior blunt tooth of the chelicerae.

webs in thicket near lagoon. January 10, 1926, 1 female on vegetation in the meadow. January 15, 1926, 1 young female in a corner of my room.

8) Cataño, December 7, 1925, 1 female in a garden.

9) Coamo Springs Hotel, January 8, 1926, 2 males and 4 females on plants near the spring.

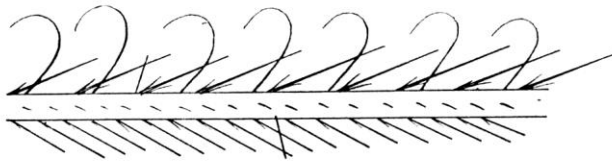


FIGURE 128. *Modisimus sexoculatus* sp. nov. Type. Portion of first Metatarsus of male, showing dorsal row of curved hairs.

10) La Gloria in the Luquillo Mountains, 2 males and 3 females in dense woods on January 30, 1926.

Types from Coamo Springs.

a) *Male* Total length 1.72 mm. Carapace 0.6426 mm. long, if measured from anterior edge of eyes to posterior margin. Thoracic groove line-like, not deep, extending from base of turret not quite to posterior margin, which is slightly emarginate. Cly-

peus as high as thoracic portion of carapace is long. Eyes 6, AME wanting (Fig. 127). ALE slightly larger than the other four eyes in ratio 4:3, contiguous with the PME, but separated from each other by a little less than their diameter. PME are separated from each other by their diameter and are equal in size with the PLE. *Chelicerae* without boss, with a powerful, blunt tooth in front, about one-third from base. This tooth is covered with short hair. At the juncture of the short, transverse margins the usual sharp tooth. *Maxillae* reach only to end of chelicerae. They are inclined over the lip and meet in median line in front

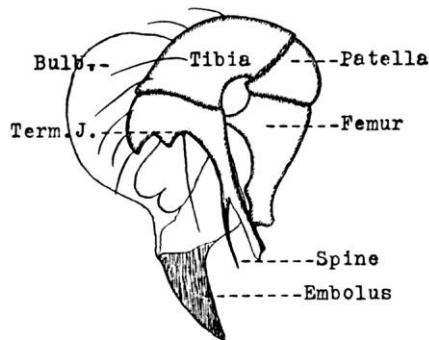


FIGURE 129. *Modisimus sexoculatus* sp. nov. Type. Retrolateral view of left palp of male. Distal femoral apophysis partly obscured by terminal joint which shows the long distal spine.

of it. *Lip* fused with sternum, immobile, wide. *Sternum* wider than long in ratio 24:15, truncated between the fourth coxae which are separated by twice their width. First coxae wide apart. *Legs* 1243, very thin and brittle.

	Femur	Pat. + Tib.	Metatarsus	Tarsus	Total
I	4.94	5.28	7.80	2.20	20.22
II	3.22	3.22	4.37	1.00	11.81
III	2.48	2.20	3.00	0.70	8.38
IV	3.10	2.68	3.75	0.70	10.23

Width of first patella at the "knee" 0.1190 mm. Tibial Index 2.

Width of fourth patella at the "knee" 0.0952 mm. Tibial Index 3.

No spines on legs. Hair on tarsi with several little spines, on metatarsi with a single little spine at base. A mid-dorsal row of evenly spaced recurved hairs on first metatarsus (Figure 128), extending from middle distally not quite to its end. No such

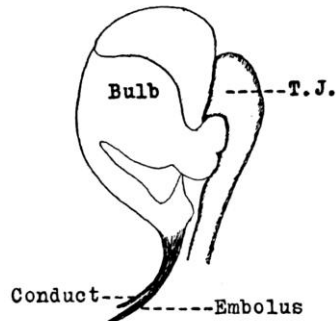


FIGURE 130. *Modisimus sexoculatus* sp. nov. Type. Prolateral view of the bulb of the same palp, showing both embolus and conductor.

hairs elsewhere either on the first or any other leg. Tarsi multi-jointed, with onychium. Claws 3. Upper claws on first leg with 6 teeth rapidly increasing in length distally, on second leg with 10 teeth of which the distal one is long, the one next to the distal

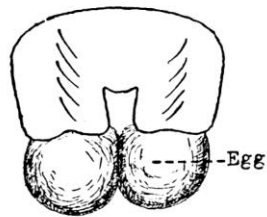


FIGURE 131. *Modisimus sexoculatus* sp. nov. Type. Epigynum of female with two eggs protruding from genital opening.

considerably shorter and the rest quite small. Palp shown in Figures 129 and 130. Femur with two apophyses, a long distal one and a small proximal. The latter is turned about 90 degrees from the larger one. Terminal joint with a long, spine-like apophysis. Embolus thin, nail-like, in close connection with conductor which may be seen only in prolateral view. Abdomen

of the *Theridion* type, higher than wide. Color a uniform pale yellow with two rows of slightly darker spots on abdomen.

b) *Female*. Total length 2.2 mm. Carapace 0.6426 mm. long, if measured from anterior edge of eyes to posterior margin, 0.7140 mm. wide, broadly truncated behind. Clypeus as high as thoracic portion is long. *Chelicerae* as in male, but without a trace of the frontal teeth. *Maxillae* distinctly shorter than chelicerae. *Lip*, *sternum* and *coxae* as in male. *Legs* 1243. No curved hairs on first metatarsi.

	Femur	Pat. + Tib.	Metatarsus	Tarsus	Total
I	3.20	3.32	4.60	1.10	12.22
II	2.20	2.00	2.70	0.64	7.54
III	1.72	1.52	1.88	0.40	5.52
IV	2.08	1.80	2.32	0.50	6.70

Width of first patella at the "knee" 0.1071 mm. Tibial Index 3.

Width of fourth patella at the "knee" 0.0952 mm. Tibial Index 5.

Epigynum colorless, small (Figure 131). It is interesting to note that two eggs are protruding simultaneously from the genital opening, suggesting that this is the normal manner in which eggs are laid, not one after another. *Color in life and in alcohol*: a pale yellow with little brown spots on underside of all femora and with both ends of all tibiae brown. Two brown spots on clypeus in front of turret. Terminal joints of palpi dark brown. Sides of abdomen with numerous white spots.