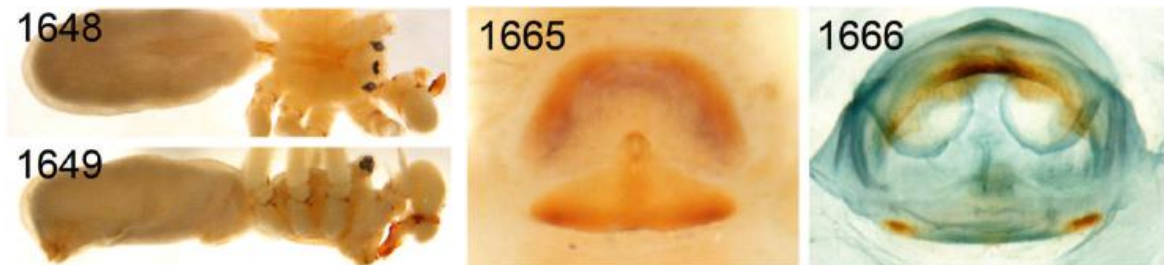


***Pholcus arkit* Huber, 2011**

Huber, B. A. 2011. Revision and cladistic analysis of *Pholcus* and closely related taxa (Araneae, Pholcidae). Bonner zool. Monographien 58: 1-510.

p. 343



1648, 1649. *Ph. arkit*, male, dorsal and lateral views.

1665, 1666. *Ph. arkit*.

p. 344

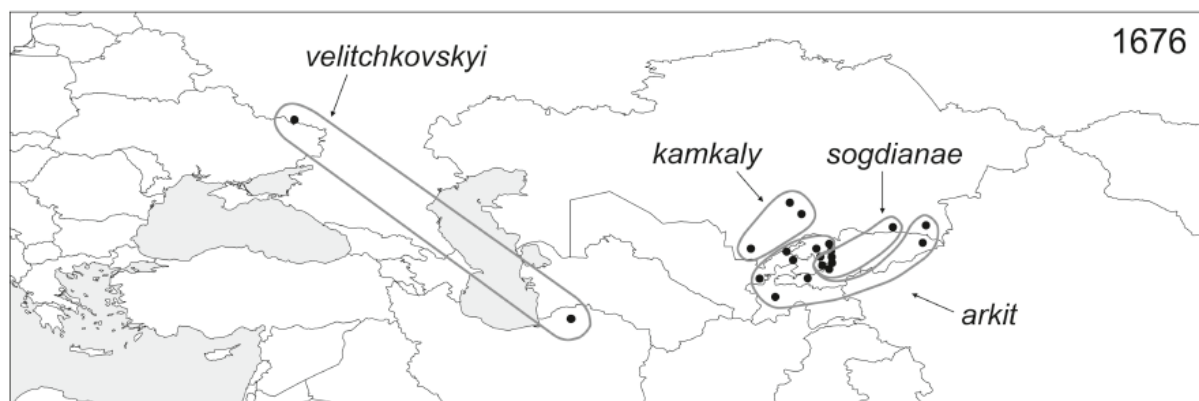
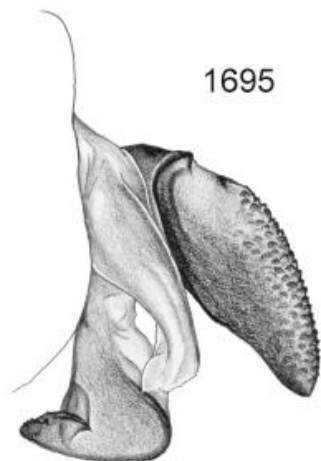


FIG. 1675, 1676. Known distributions of *Pholcus ponticus* and of the other species of the *Ph. ponticus* species group.

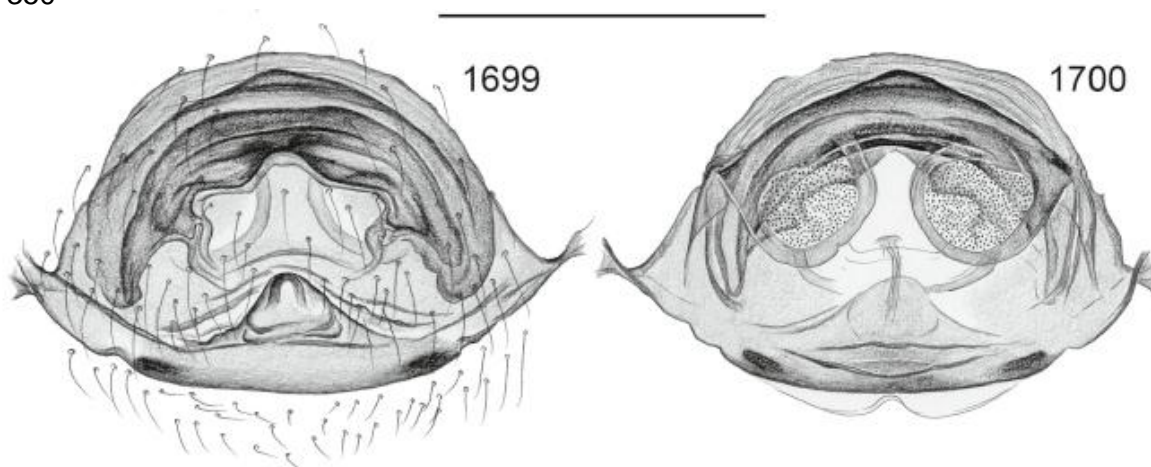


1695



1696

FIG. 1691-1696. Left bulb processes, retrolateral views (same scale), and left procuri, prolateral views (same scale) of *Pholcus ponticus* (1691, 1692), *Ph. sogdianae* (1693, 1694), and *Ph. arkit* (1695, 1696). Scale lines: 0.3 (bulbs), 0.5 (procuri).



1699

1700

FIG. 1697-1700. Cleared female genitalia, ventral and dorsal views, *Ph. arkit* (1699, 1700). Scale line (for all): 0.5.

Ph.

Pholcus arkit n. sp.

Figs. 1648, 1649, 1665, 1666, 1695, 1696, 1699, 1700

Type. Male holotype from Kyrgyzstan, Jalal-Abad Oblast, Chatkalsky Mt. Range, valley of Tumanyak river, Sary-Chelek Reserve, 4 km NE of Arkit [-41°51'N, 71°58'E], 20.vi.1992 (A.A. Fedorov, A.A. Zyuzin), in ZMMU.

Etymology. The specific name is a noun in apposition, derived from the type locality.

Diagnosis. Very similar to *Ph. ponticus* and *Ph. sogdiana*, distinguished from former by male ocular area more elevated and male palpal femur apophysis less complex (more like in *Ph. spasskyi*, cf. Fig. 1854); from both by minor differences in shapes of procurus and bulbal processes (compare Figs. 1691-1696) and female genitalia (Figs. 1699, 1700).

Male (holotype). Total body length 4.1, carapace width 1.4. Leg 1: 38.7 (10.1 + 0.6 + 10.1 + 15.8 + 2.1), tibia 2: 6.8, tibia 3: 4.8, tibia 4: 6.5; tibia 1 L/d: 71. Habitus as in Figs. 1648 and 1649. Carapace pale ochre-yellow with median brown mark divided by narrow median line, sternum light brown with many

small light spots, legs ochre-yellow, femora proximally frontally slightly darkened (reddish-brown), abdomen monochromous ochre-gray. Distance PME-PME 480 μ m, diameter PME 125 μ m, distance PME-ALE 35 μ m, distance AME-AME 45 μ m, diameter AME 60 μ m. Ocular area elevated, longer hairs posteriorly, each triad on additional low elevation. No thoracic furrow; clypeus unmodified. Chelicerae similar to *Ph. manueli* (cf. Fig. 1731). Sternum wider than long (1.0/0.7), unmodified. Palps very similar to *Ph. ponticus* (cf. Figs. 1677, 1678) and *Ph. sogdiana*, ventral femur apophysis simple as in *Ph. sogdiana*, procurus without ventrodistal apophysis (Fig. 1696), prolateral process more like in *Ph. sogdiana*, uncus and appendix more like in *Ph. ponticus* (Fig. 1695). Legs without spines and curved hairs, few vertical hairs (most hairs missing); retrolateral trichobothrium on tibia 1 at 6%; prolateral trichobothrium absent on tibia 1, present on other tibiae; tarsal pseudosegments very indistinct, barely visible in dissecting microscope.

Variation. Tibia 1 in 5 other males: 6.5-9.3 (mean 7.6). The trochanter apophysis is slightly more slender in some specimens.

Female. In general similar to male, triads closer together (distance PME-PME 250 μ m). Tibia 1 in 11 females: 5.3-8.7 (mean 7.3). Epigynum apparently indistinguishable from *Ph. sogdiana* (compare Figs. 1663 and 1665); internal genitalia as in Figs. 1666 and 1700.

Distribution. Known from Kyrgyzstan, Uzbekistan, Tajikistan, and eastern Kazakhstan (Fig. 1676).

Material examined. KYRGYZSTAN: *Jalal-Abad Oblast.* Sary-Chelek Reserve, 4 km NE of Arkit: ♂ holotype above; 2 km S of Arkit, 19.v.1992 (A.A. Zyuzin), 1♂1♀ in ZMMU. Sary-Chelek Reserve, Chatkalsky Mt. Range, near Arkit, 1500 m a.s.l., 5.v.1983 (S.L. Zonstein), 1♂2♀ in ZMMU. Chatkalsky Mt. Range, Sary-Cheleksky Reserve, Arkit village, indoor, 27.ix.1983 (A.B. Ryvkin), 2♀ 1 juv. in ZMMU. Sary-Chelek Reserve, 10 km NE of Arkit, Trikol Lake, 1500 m a.s.l., 18.vi.1992 (A.A. Zyuzin), 1♀ in ZMMU. Alaisky Mt. Range, Teketekerek gorge 6 km NNE Khaidarkan town [39°57'N, 71°25'E], 2100 m a.s.l., 11.vi.1987 (S.L. Zonstein), 2♂1♀ in ZMMU. S slope of Talassky Mt. Range, Itagor river canyon, ~32 km N Toktogul town [42°10'N, 72°49'E], 1900-2000 m a.s.l., 2.vi.1987 (S.L. Zonstein), 1♀ in ZMMU. Kok-Bel' Pass [-41°42'N, 72°55'E], nr. Kara-Kul town, 4.vi.1997 (S. Ovchinnikov), 2♂1♀ in ZMMU. *Issyk Kul*

Oblast: Karakol [42°29'N, 78°24'E], 1600 m a.s.l., 15.viii.1984 (S.V. Ovchinnikov), 1♂1♀ in ZMMU.
UZBEKISTAN: Chatkalsky Reserve, meteorostation, Bash-Kyzyl-Sai Canyon [-39°56'N, 68°18'E], indoor, 18.ix.1983 (K.Y. Eskov), 1♂4♀ in ZMMU; Chatkalsky Reserve, Bash-Kyzyl-Sai Canyon, creek bank, 19.ix.1983 (K.Y. Eskov), 1♂ in ZMMU. Tashkent Region, Ugamski Mt. Range, Sidzhak Vil. [41°41'N, 70°03'E], 6.-27.vi.1983 (A.S. Zorskin), 1♂ in ZMMU. Namangan Area, Pap Distr., NW slope of Kurama Mt. Range, ca. 12 km ENE Koksarai, Kamchik-Sai River canyon (-41°07.4'N, 70°28.7'E), 1400-2000 m a.s.l., 11.iv.1985 (S.V. Ovchinnikov), 1♂ in ZMMU.
TAJIKISTAN: Dushanbe Area: Hyssarsky Mt. Range, near Ramit Vil. [38°44'N, 69°19'E], Charmin Stow, 1400 m a.s.l., 3.x.1986 (S.L. Zonstein), 1♂1♀ in ZMMU.
KAZAKHSTAN: *Almaty Region*: Charyn Canyon [-43°22'N, 79°05'E], Sartogai, 12.vi.1993 (S. Ovchinnikov), 2♂1♀ in ZMMU.