

***Pholcus armeniacus* Senglet, 1974**

Senglet, A. 1974. *Pholcus* nouveaux d'Iran (Araneae: Pholcidae). Rev. suisse Zool. 81(4): 803-812.

p. 809

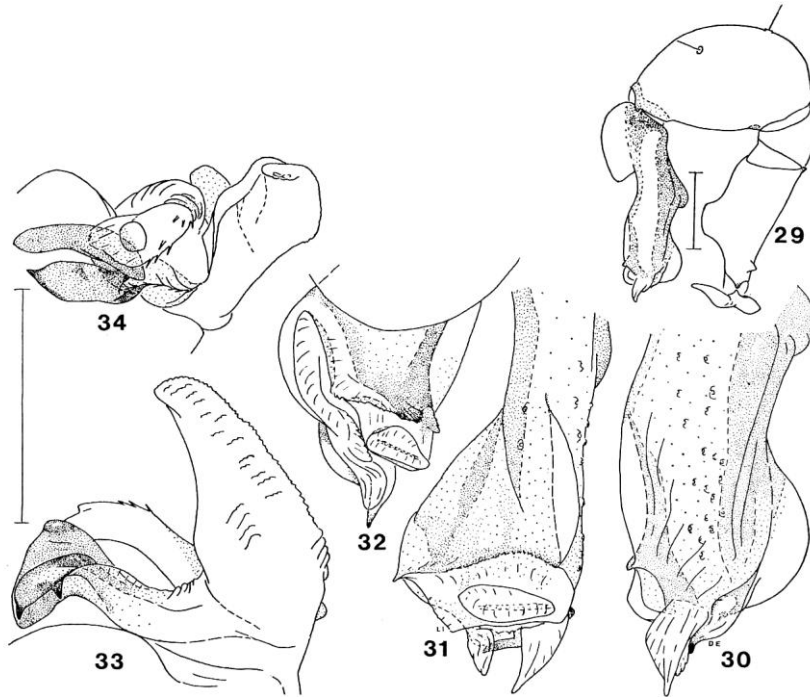


FIG. 29-34. *Pholcus armeniacus* n. sp., ♂. — 29. Palpe maxillaire gauche, vue externe. — 30. Paracymbium gauche: extrémité, vue externe. — 31. Id., vue antérieure. — 32. Id., vue interne. — 33. Apophyses du bulbe gauche, vue interne. — 34. Id., vue antérieure. — Témoins d'échelle = 0,5 mm.

p. 810

***Pholcus armeniacus* n. sp. (fig. 29-34 et 37)**

Prov. Azerbaïdžan occ.: Mākū, (39° 12' N, 44° 30' E), 16.9.1973, 1 ♂ holotype, 3 ♂ et 6 ♀ paratypes.

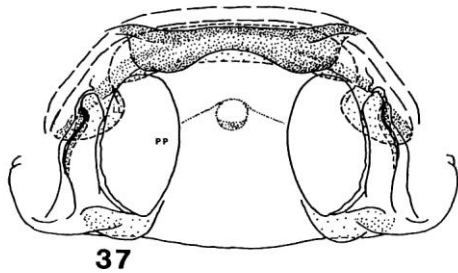
Holotype et paratypes au Muséum d'Histoire naturelle de Genève.

Pris dans des cavités formées par l'effondrement d'une paroi de roche. Cette espèce est très proche de *Ph. medicus*, et l'on pourrait douter d'une différence de niveau spécifique. L'examen de la vulve montre toutefois une divergence telle, qu'elle implique cette séparation spécifique. Chez le ♂, l'apophyse antérieure du bulbe permet une distinction précise.

♂ et ♀. Céphalothorax blanchâtre; partie thoracique marquée d'une tache médiane tronquée à la marge postérieure, un peu élargie au tiers postérieur, puis atténuée en pointe au quart antérieur. Base postérieure de la partie céphalique taché.

♂. Palpe maxillaire (fig. 29) et extrémité du paracymbium (fig. 24-26) très proches de *Ph. medicus*. L'apophyse postérieure du bulbe (fig. 33) est légèrement

plus allongée (2,5 × la largeur). L'apophyse antérieure en diffère nettement par l'extrémité apicale de sa branche externe, plus large, triangulaire en vue interne (fig. 33), son tubercule postérieur interne dépassant en arrière la branche



♀, vulve, vue dorsale.  
*armeniacus* n. sp.

37. *Pholcus*

Témoin d'échelle = 0,5 mm.

interne. En vue antérieure (fig. 34), sa marge interne est concave. Holotype ♂, céphalothorax: long., 1,4 mm. clypeus exclu; larg., 1,75 mm.

♀. Epigyne comme *Ph. medicus* (fig. 40). La vulve (fig. 37) est caractérisée par les lobes latéraux (LL) de l'armature ventrale largement arrondis; la marge postérieure du lobe, assez courte, est très convexe. La répartition des pores est régulière sur les plaques perforées (PP).

**Senglet, A. 2001.** Copulatory mechanisms in *Hoplopholcus*, *Stygopholcus* (revalidated), *Pholcus*, *Spermophora* and *Spermophorides* (Araneae, Pholcidae), with additional faunistic and taxonomic data. Mitt. schweiz. Ent. Ges. 74: 43-67.

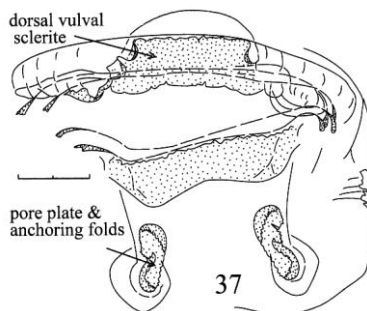


Fig. 37: *Pholcus armeniacus*, turgid vulva, antero-dorsal view.  
Scale, 0.2 mm.

**Senglet, A. 2008.** New species of *Pholcus* and *Spermophora* (Pholcidae, Araneae) from Iran and Afghanistan, with notes on mating mechanisms. Rev. suisse Zool. 115: 355-376.

***Pholcus armeniacus* Senglet, 1974**

*Pholcus armeniacus* Senglet, 1974: 810, figs 29-34, 37 (description of ♂ and ♀).

MATERIAL EXAMINED: 7 ♂, 2 ♀, IRAN, Western Azerbaidjan: Maku, 39°08'N 44°30'E, 13/8/1974. – 2 ♂, 1 ♀, IRAN, Qareh Zia-ed-Din, 38°56'N 45°03'E, 28/5/1975. All specimens were collected in small caves.

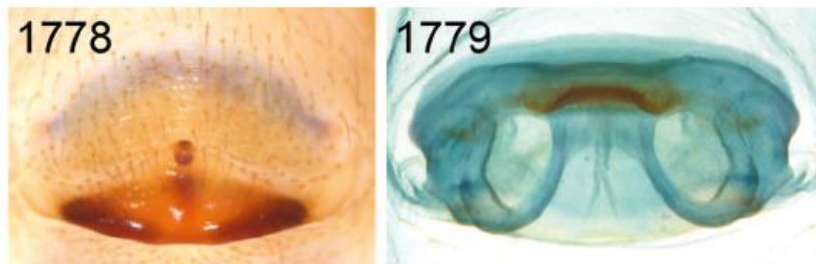
**Huber, B. A. 2011.** Revision and cladistic analysis of *Pholcus* and closely related taxa (Araneae, Pholcidae). Bonner zool. Monographien 58: 1-510.

p. 368



habitus. 1746, 1747. *Ph. fuerteventurensis*, male, dorsal and lateral views. 1748-1750. *Ph. armeniacus*, male, dorsal and lateral views; female abdomen, ventral view. 1751. *Ph. hyrcanus*, male, dorsal view. 1752, 1753.

p. 369



epigyna, ventral views, and cleared female genitalia, dorsal views. 1776, 1777. *Ph. fuerteventurensis*. 1778, 1779. *Ph. armeniacus*. 1780, 1781. *Ph. hyrcanus*. 1782, 1783. *Ph. medicus*. 1784, 1785. *Ph. persicus*. 1786,

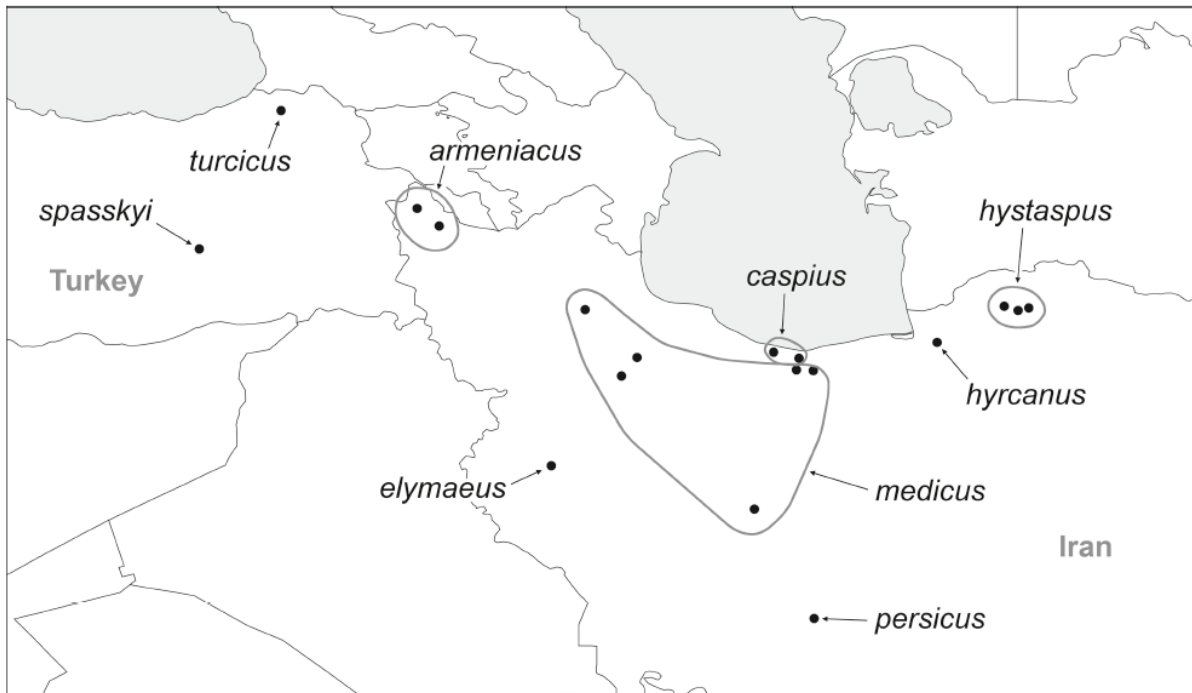


FIG. 1817. Known distribution of the *Pholcus phalangioides* species group (the cosmopolitan *Ph. phalangioides* is excluded; for *Ph. alticeps*, see Fig. 1818).

*Pholcus armeniacus* Senglet, 1974

Figs. 1748-1750, 1778, 1779, 1823-1828

*Pholcus armeniacus* Senglet 1974: 810-811, figs. 29-34, 37. Senglet 2001: fig. 37. Senglet 2008: 358.

*Types.* Male holotype and 3♂6♀ paratypes from Iran, West Azarbaijan Prov., Mākū (label: 39°16'N, 44°38'E; Senglet 1974: 39°12'N, 44°30'E), 16. ix.1973 (A. Senglet), in MHNG, examined.

*Diagnosis.* Distinguished from very similar species (*Ph. medicus*, *Ph. hyrcanus*, *Ph. hystaspus*) by details of appendix (Fig. 1828) and female genitalia (Figs. 1778, 1827; shapes of epigynum and internal structures).

*Male* (holotype). Total body length 5.7, carapace width 1.8. Leg 1: 38.5 (9.6 + 0.8 + 10.0 + 15.8 + 2.3), tibia 2: 7.3, tibia 3: 5.4, tibia 4: 7.1; tibia 1 L/d: 57. Habitus as in Figs. 1748 and 1749. Carapace ochre-yellow with light brown median mark, sternum monochromous, only margins darker, legs monochromous but femora 1 and 2 proximally reddish-brown (frontally), abdomen monochromous ochre-gray. Distance PME-PME 515 μm, diameter PME 115 μm, distance PME-ALE 35 μm, distance AME-AME 45 μm, diameter AME 90 μm. Ocular area elevated, many stronger hairs posteriorly, each triad on low elevation directed laterally. No thoracic furrow; clypeus unmodified. Chelicerae as in Fig. 1825, distal apophyses with modified hairs and some stronger hairs medially, two pairs of weakly sclerotized apophyses proximally. Sternum wider than long (1.10/0.85), unmodified. Palps as in Figs. 1823 and 1824, coxa unmodified, trochanter with retrolatero-ventral apophysis, femur with small dorsal apophysis proximally and ventral protuberance, procurus rather simple, with three prolatero-dorsal spines, uncus long and slender, embolus weakly sclerotized, appendix consisting of two branches, prolateral branch proximally membranous and attached to retrolateral branch, distally sclerotized with two tips (Fig. 1828). Legs without spines and curved hairs, few vertical hairs (in rows on tibiae, barely visible in dissecting microscope); retrolateral trichobothrium on tibia 1 at 5%; prolateral trichobothrium absent on tibia 1, present on other tibiae; tarsal pseudosegments indistinct, only distally a few visible in dissecting microscope.

*Variation.* Tibia 1 in 2 other males: 10.7, 10.9.

*Female.* Very similar to male, ocular area lower, triads closer together (distance PME-PME 320 μm), femora not reddish-brown proximally. Tibia 1 in 5



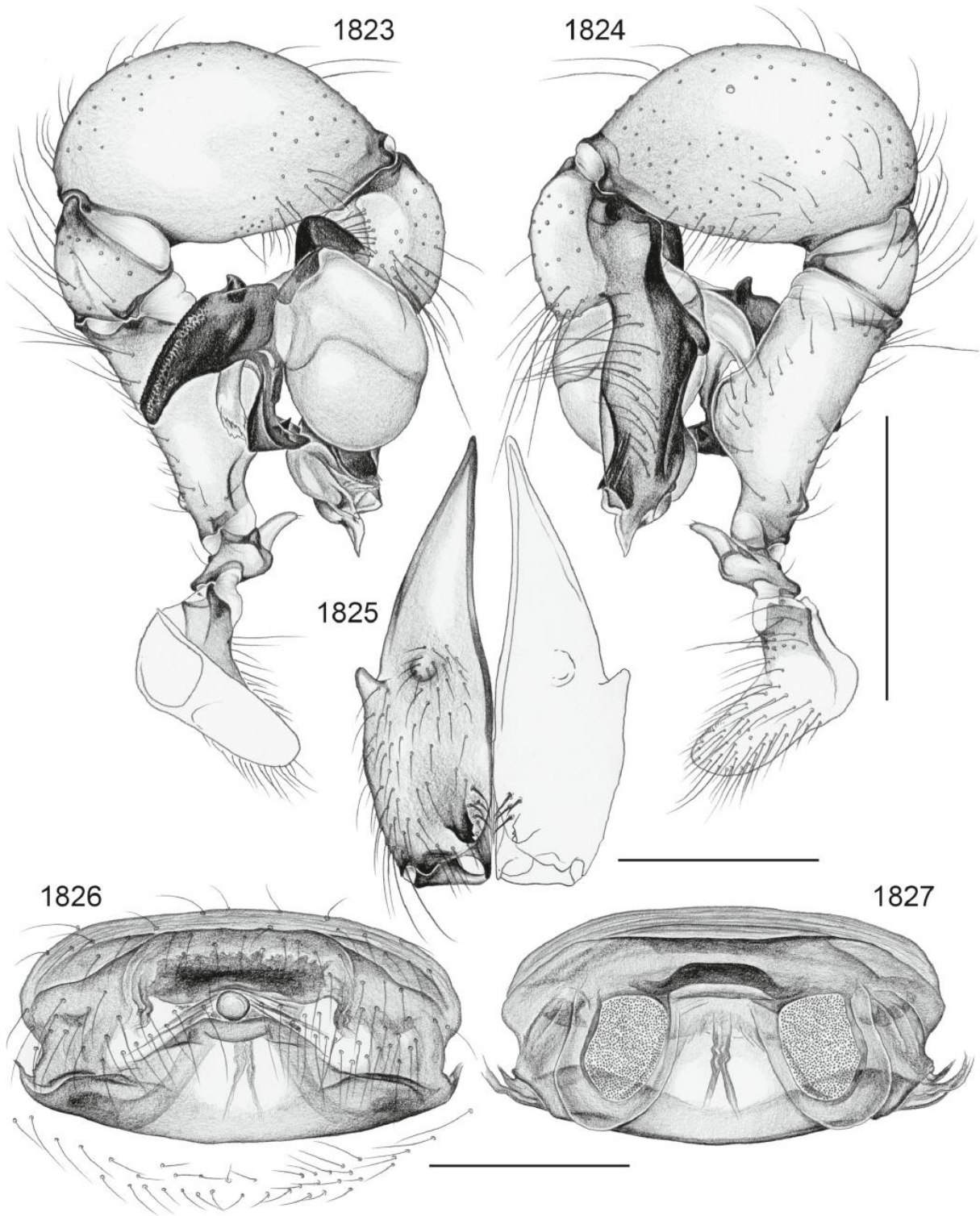


FIG. 1823-1827. *Pholcus armeniicus*. 1823, 1824. Left male palp, prolateral and retrolateral views. 1825. Male chelicerae, frontal view. 1826, 1827. Cleared female genitalia, ventral and dorsal views. Scale lines: 1.0

p. 379

females: 10.0-11.2 (mean 10.6). Epigynum weakly elevated, anteriorly with internal arc visible through cuticle, narrow posterior plate with 'knob' (Figs. 1778, 1826); internal genitalia as in Figs. 1779 and 1827.

*Distribution.* Known from two localities in Iran, West Azarbaijan Prov. (type locality and further locality in Senglet 2008) (Fig. 1817).

*Material examined.* IRAN: *West Azarbaijan Prov.*: Mākū: ♂ holotype and 3♂6♀ paratypes above.

p. 380



FIG. 1828-1835. Bulbal appendices in prolatero-dorsal views (1828, 1829, 1831, 1834; all at same scale), left procurus in prolateral view (1833) and cleared female genitalia in dorsal views (1830, 1832, 1835; all at same scale). 1828. *Ph. armeniacus*. 1829, 1830. *Ph. hyrcanus*. 1831, 1832. *Ph. medicus*. 1833-1835. *Ph. persicus* (arrow points at distinctive sclerite). Scale lines: 0.5 (1830, 1832, 1833, 1835), 0.3 (1828, 1829, 1831, 1834).