

***Pholcus chiangdao* Huber, 2011**

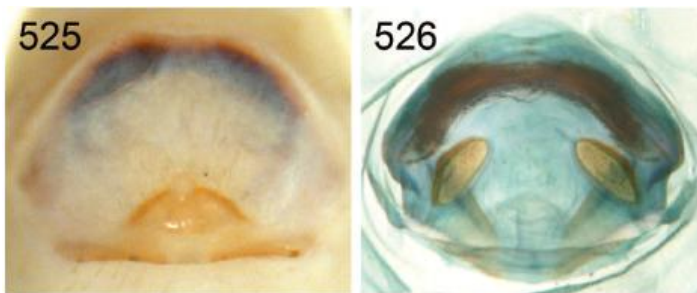
Huber, B. A. 2011. Revision and cladistic analysis of *Pholcus* and closely related taxa (Araneae, Pholcidae). *Bonner zool. Monographien* 58: 1-510.

p. 127



508-510. *Ph. chiangdao*, male dorsal view; female prosomata, orange and brown color morphs.

p. 128



Ph. chiangdao.

525, 526.



FIG. 529. Known distribution of the *Pholcus halabala* species group.

below guest house along road, 2.x.2003 (ATOL Expedition 2003), in MACN.

Etymology. The specific name is a noun in apposition, derived from the type locality.

Diagnosis. Distinguished from most congeners by combination of absence of AME, orange mark on male carapace (Fig. 508), and male cheliceral morphology (Fig. 549); from very similar *Ph. khene* and *Ph. kinabalu* by male palpal morphology (shapes of procurus and appendix; Figs. 547, 548) and female internal genitalia (elongate pore plates, Figs. 526, 551).

Male (holotype). Total body length 4.1, carapace width 1.1. Leg 1: 36.7 (8.5 + 0.5 + 8.5 + 17.1 + 2.1), tibia 2: 5.1, tibia 3: 2.9, tibia 4: 4.5; tibia 1 L/d: 80. Habitus as in Fig. 508. Carapace pale ochre-yellow with orange median mark including ocular area, clypeus ochre-yellow, sternum whitish, legs pale ochre-yellow, patellae and tibia-metatarsus joints brown, abdomen pale ochre-gray. Distance PME-PME 495 μm , diameter PME 115 μm , distance PME-ALE 35 μm , no trace of AME. Ocular area elevated, triads on short stalks directed laterally. No thoracic furrow (only dark line anteriorly); clypeus unmodified. Chelicerae as in Fig. 549, distal apophyses apparently without modified hairs, proximally with one pair of light frontal apophyses. Sternum wider than long (0.7/0.6), unmodified. Palps as in Figs. 547 and 548, coxa unmodified, trochanter with distinctively bent retrolatero-ventral apophysis, femur barely modified, procurus with strong ventral apophysis distally, bulb with uncus, short weakly sclerotized embolus, small and simple curved appendix. Legs without spines and curved hairs, few vertical hairs (many hairs missing); retrolateral trichobothrium on tibia 1 at 4%; prolateral trichobothrium absent on tibia 1, present on other tibiae; tarsal pseudosegments indistinct, only distally visible in dissecting microscope.

Variation. Tibia 1 in 2 other males: 9.3, 9.5.

Female. In general similar to male but triads closer together (distance PME-PME 250 μm). Females appear to be dimorphic in coloration (Figs. 509, 510): morph a, with orange carapace like males, clypeus with brown transverse band below light field under ocular area; morph b, with brown mark on carapace and brown clypeus. Of the five females collected with the male type, three are morph a, two morph b. Tibia 1 in 5 females: 6.4-7.5 (mean 6.8). Epigynum slightly to strongly protruding, dark internal arc visible through cuticle anteriorly (Fig. 525), posteriorly with narrow sclerite with

Pholcus chiangdao n. sp.

Figs. 508-510, 525, 526, 547-551

Type. Male holotype from Thailand, Chiang Mai Prov., Doi Chiang Dao Wildlife Sanctuary, Amphem Chiangdao (19°19.2'N, 98°49.8'E), ca. 1500 m a.s.l.,

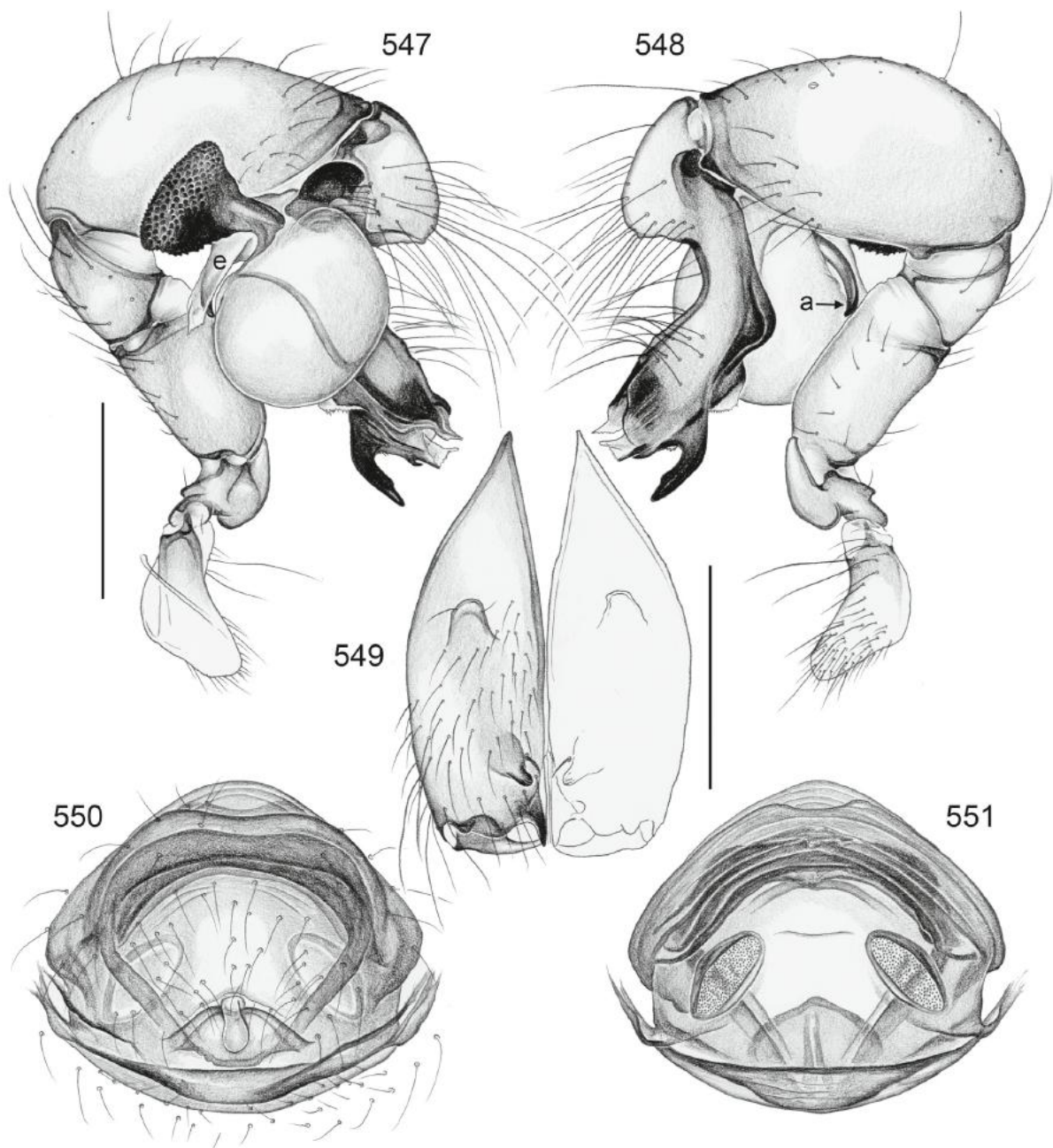


FIG. 547-551. *Pholcus chiangdao*. 547, 548. Left male palp, prolateral and retrolateral views. 549. Male chelicerae, frontal view. 550, 551. Cleared female genitalia, ventral and dorsal views. Scale lines: 0.5 (547, 548), 0.3 (549).

'knob' (Fig. 550); internal genitalia as in Figs. 526 and 551.

Distribution. Known from Thailand, Chiang Mai Prov., and from specimens assigned tentatively (because no males available) from Nakhon Nayok Prov. (Fig. 529).

Material examined. THAILAND: *Chiang Mai Prov.*: Doi Chiang Dao Wildlife Sanctuary, Amphem Chiangdao: ♂ holotype above; same data, 5♀ in MACN.

Chiang Mai Distr., Doi Suthep near Monthathan waterfalls [18°49.0'N, 98°55.5'E], 750 m a.s.l., 11.ii.1997 (P. Schwendinger), 2♂ in MHNG; Doi Suthep [18°48.3'N, 98°55.3'E], 1150 m a.s.l., 17.xi.1990 (P. Schwendinger), 1♀ in MHNG.

Assigned tentatively: THAILAND: *Nakhon Nayok Prov.*: Khao Yai N. P. [-14°24'N, 101°22'E], primary forest near water, 5.xi.1987 (C.L. & P.R. Deeleman), 1♀ in RMNH.