

***Pholcus chicheng* Tong & Li, 2010**

Tong, Y., Li, S. 2010. Eight new spider species of the genus *Pholcus* (Araneae, Pholcidae) from China. *Zootaxa* 2355: 35-55.

p. 36

***Pholcus chicheng* sp. nov.**

Figs 1D–F, 4A–F

Type material: Holotype male, CHINA: Hebei Province, Zhangjiakou City, Chicheng County, Dahaituo National Natural Reserve (40°34.933'N, 115°46.066'E), 5 November 2005, Q. Wang, Y. Song & G. Zheng leg. Paratypes: 18 males and 10 females, same data as for holotype.

Etymology: The species name is a noun in apposition derived from the type locality.

p. 37



Pholcus chicheng sp. nov., D–F;

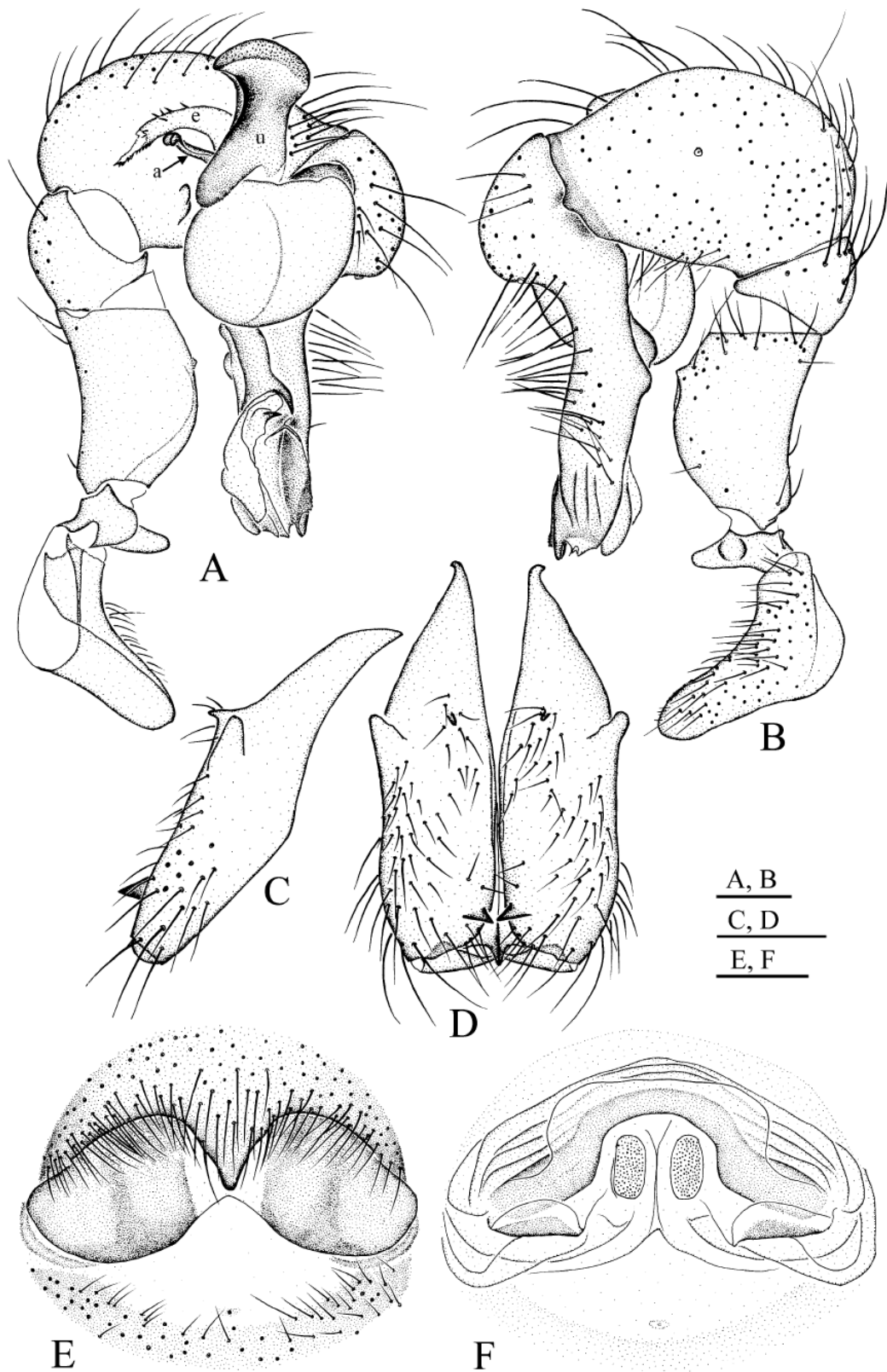
p. 38

Description: Male (holotype). Total length 5.28 (5.84 with clypeus), carapace width 1.76. Leg 1: 48.28 (12.42+0.71+12.71+19.85+2.59), tibia 2: 8.28, tibia 3: 5.57, tibia 4: 7.71; tibia 1 L/d: 68. Habitus as in figs 1D, E. Carapace yellowish, with brown radiated stripes and brown marginal band; ocular area yellowish, with brown band at median and laterally; clypeus yellowish, without marks; sternum deep yellow. Opisthosoma gray, with some spots dorsally and laterally. Distance PME–PME 0.27; diameter PME 0.15; distance PME–ALE 0.06; diameter AME 0.09. Chelicerae as in figs 4C, D, with pair of black apophyses distally, pair of unsclerotized apophyses proximolaterally, and pair of finger-shaped prominences frontally. Palps as in figs 4A, B; bulbal appendix spoon-shaped distally. Legs yellow, but dark brown on basal part of tibiae and patellae, with darker rings on femora (subdistally) and tibiae (proximally and subdistally), without spines, curved and vertical hairs; tarsus 1 with about 20 pseudosegments, but only about 10 distinct distally.

Variation: Tibia 1 in other males (n = 18): 8.99–13.14 (mean: 11.16).

Females: In general similar to males. Tibia 1 (n = 10): 7.43–8.85 (mean: 8.19). Epigynum as in figs 1F and 4E, brown with distinctive pattern. Dorsal view as in fig. 4F.

Distribution: Only known from type locality at present.



FIGURES 4A–F. *Pholcus chicheng* sp. nov. A–B. Male left palp, prolateral (A) and retrolateral (B) views; C–D. Male chelicerae, lateral (C) and frontal (D) views; E. Female genitalia, ventral view; F. Cleared female genitalia, dorsal view. Scale lines: 0.3 mm.

Huber, B. A. 2011. Revision and cladistic analysis of *Pholcus* and closely related taxa (Araneae, Pholcidae). Bonner zool. Monographien 58: 1-510.

p. 462

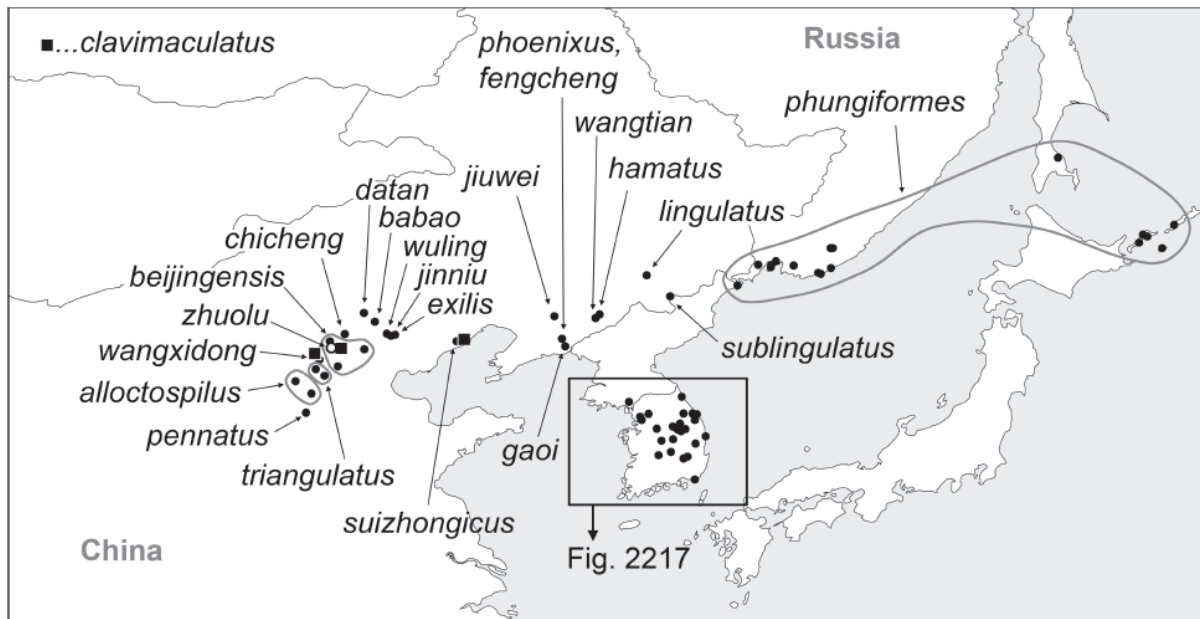


FIG. 2216. Known distribution of the *Pholcus phungiformes* species group. For Korean species, see Fig. 2217.

p. 504

52. Uncus ventral process ('pseudo-appendix'): (0) absent; (1) present. Several species within the *Pholcus phungiformes* group have apparently regained an appendix. However, this structure does not seem to arise from the bulb like a true appendix but rather from the uncus (Figs. 2263, 2280). In some species, the pseudo-appendix may even be bifid (e.g., *Ph. exilis*, *Ph. wuling*, *Ph. chicheng*) but the homology of the two processes requires further study (in the original descriptions of these species the structures were considered an appendix and a process of the uncus; Tong & Li 2010).