

***Pholcus cibodas* Huber, 2011**

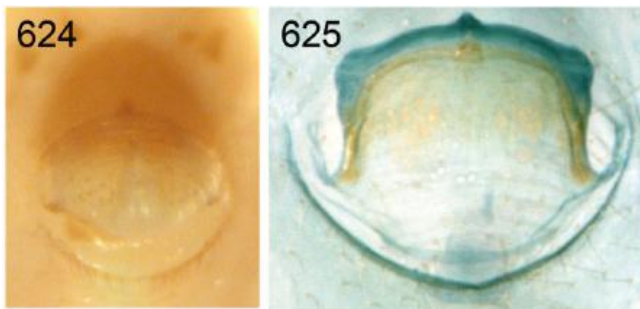
**Huber, B. A. 2011.** Revision and cladistic analysis of *Pholcus* and closely related taxa (Araneae, Pholcidae). *Bonner zool. Monographien* 58: 1-510.

p. 146



608, 609. *Ph. cibodas*, male, dorsal and lateral views.

p. 147



624, 625. *Ph. cibodas*.

p. 167

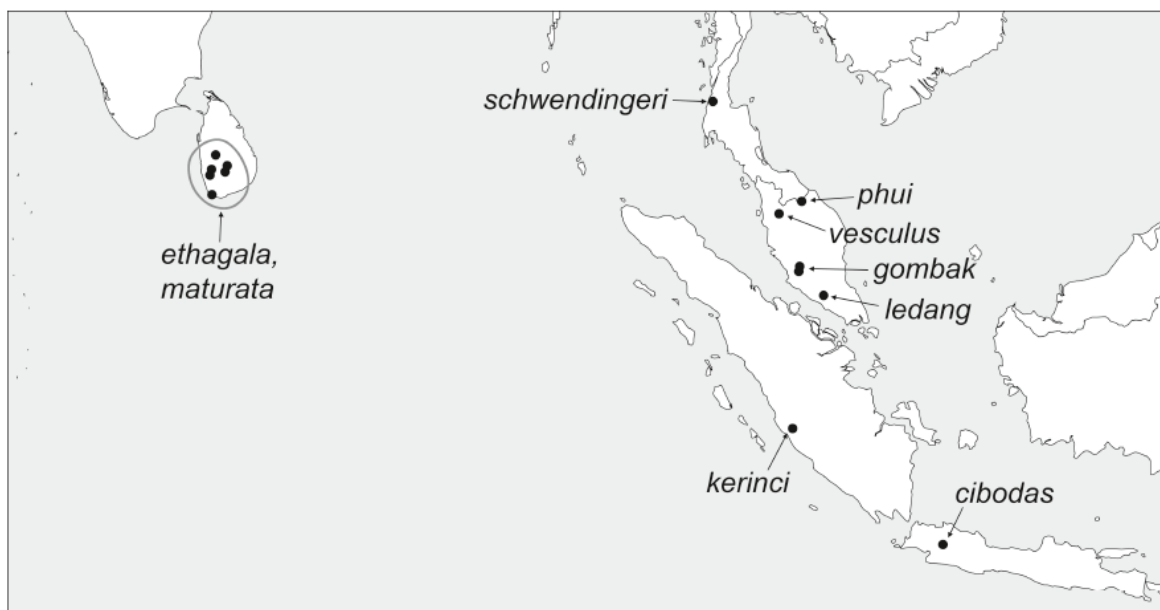


FIG. 718. Known distributions of the *Pholcus kerinci* and *Ph. ethagala* species groups.

p. 167

*Pholcus cibodas* n. sp.

Figs. 608, 609, 624, 625, 736-740

*Type.* Male holotype from Indonesia, Java, Jawa Barat, Cibodas [ $-6^{\circ}44'S$ ,  $107^{\circ}00'E$ ], 1450-1550 m a.s.l., from leaves, 6.-8.xii.1986 (S. Djojosedharmo), in RMNH.

*Etymology.* The specific name is a noun in apposition, derived from the type locality.

*Diagnosis.* Distinguished from most congeners by unmodified male chelicerae (as in *Ph. kerinci*; cf. Fig. 722); from similar *Ph. kerinci* by shapes of trochanter apophysis, appendix, and procurus (Figs. 736-738). *Male* (holotype). Total body length 4.5, carapace width 0.9. Leg 1: 37.2 (8.8 + 0.4 + 9.0 + 17.2 + 1.8), tibia 2: 5.8, tibia 3: 3.6, tibia 4: 5.2; tibia 1 L/d: 102.

p. 171

Habitus as in Figs. 608 and 609. Carapace ochre-yellow with dark brown median band including ocular area and clypeus (except distal rim), sternum whitish, legs ochre-yellow, patella area and tibia-metatarsus joints brown, abdomen ochre-gray, with very indistinct darker marks dorsally, ventrally monochromous. Distance PME-PME 265  $\mu\text{m}$ , diameter PME 105  $\mu\text{m}$ , distance PME-ALE 35  $\mu\text{m}$ , distance AME-AME 25  $\mu\text{m}$ , diameter AME 35  $\mu\text{m}$ . Ocular area slightly elevated, many stronger hairs on posterior side. No thoracic furrow; clypeus unmodified. Chelicerae unmodified as in *Ph. kerinci* (cf. Fig. 722). Sternum wider than long (0.65/0.50), unmodified. Palps as in Figs. 736 and 737, coxa unmodified, trochanter with small retrolateral and very long ventral apophysis, femur barely modified, dorsal trichobothrium on tibia very distal, procurus rather simple, with distinctive spine-like apophysis distally (Fig. 738), bulb without uncus, weakly sclerotized embolus, massive but simple appendix. Legs without spines and curved hairs, few vertical hairs; retrolateral trichobothrium on tibia 1 at 4%; prolateral trichobothrium absent on tibia 1, present on other tibiae. Tarsal pseudosegments not seen in dissecting microscope.

*Variation.* Tibia 1 in other male: 9.1.

*Female.* In general similar to male but carapace with pair of light brown marks not extending to ocular area, clypeus not darkened; triads slightly closer together (distance PME-PME 210  $\mu\text{m}$ ). Tibia 1: 7.2 (missing in other female). Epigynum simple and weakly sclerotized (Fig. 624), with long (extensible?) scape posteriorly carrying 'knob' (Fig. 739); internal genitalia as in Figs. 625 and 740.

*Distribution.* Known from type locality only (Fig. 718).

*Material examined.* INDONESIA: Java: Jawa Barat: Cibodas: ♂ holotype above, together with 1♂2♀ in RMNH.

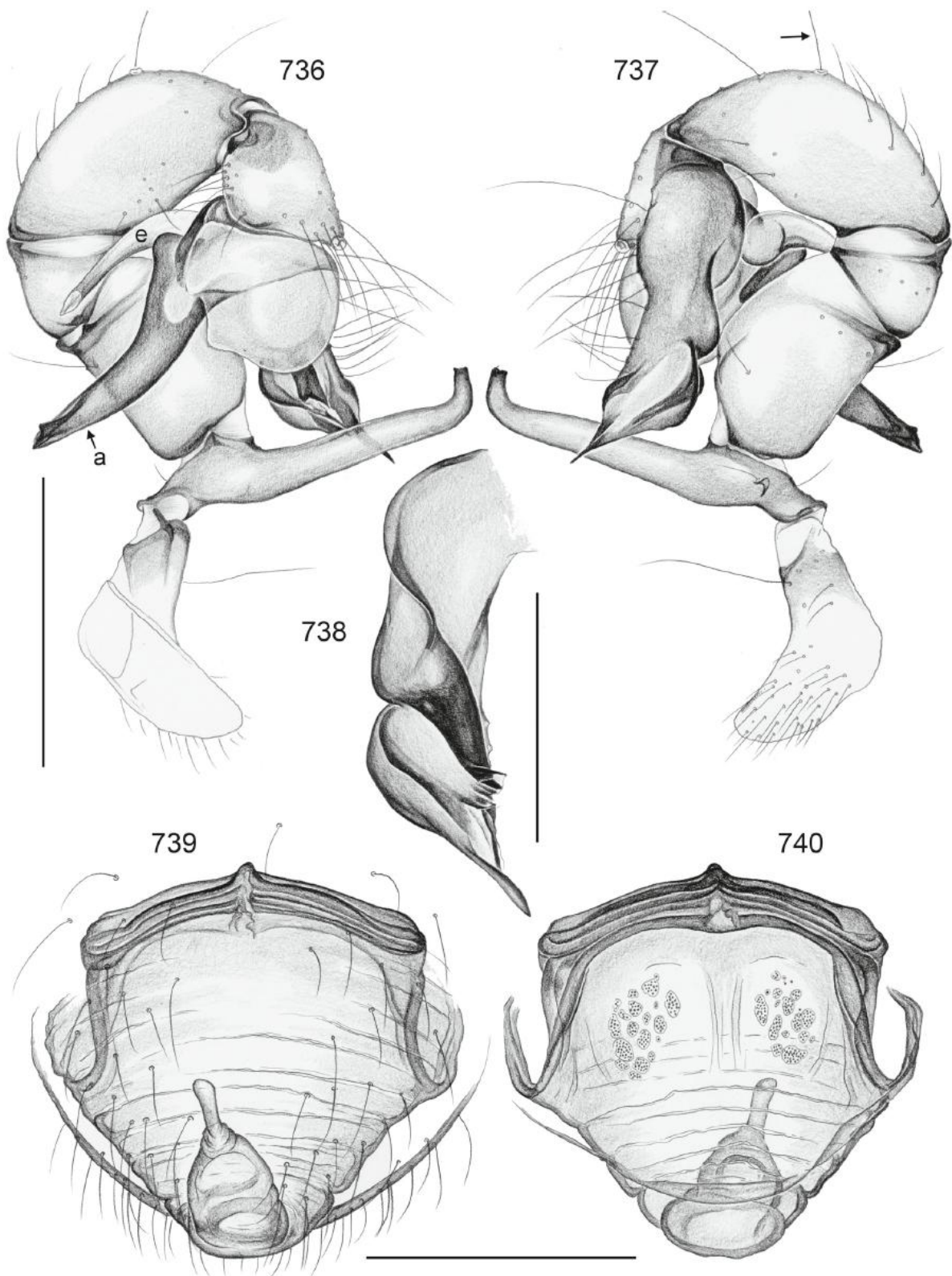


FIG. 736-740. *Pholcus cibodas*. 736, 737. Left male palp, prolateral and retrolateral views (arrow points at dorsal trichobothrium). 738. Left procurus, prolateral view. 739, 740. Cleared female genitalia, ventral and dorsal views. Scale lines: 0.5 (736, 737), 0.3 (738-740).