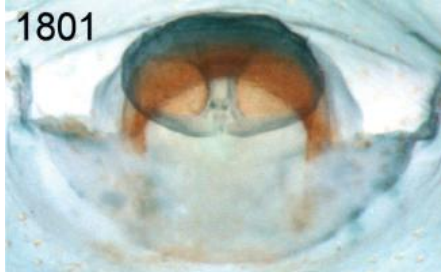


***Pholcus dixie* Huber, 2011**

**Huber, B. A. 2011.** Revision and cladistic analysis of *Pholcus* and closely related taxa (Araneae, Pholcidae). *Bonner zool. Monographien* 58: 1-510.

p. 370



1801. *Ph. dixie*.

p. 393

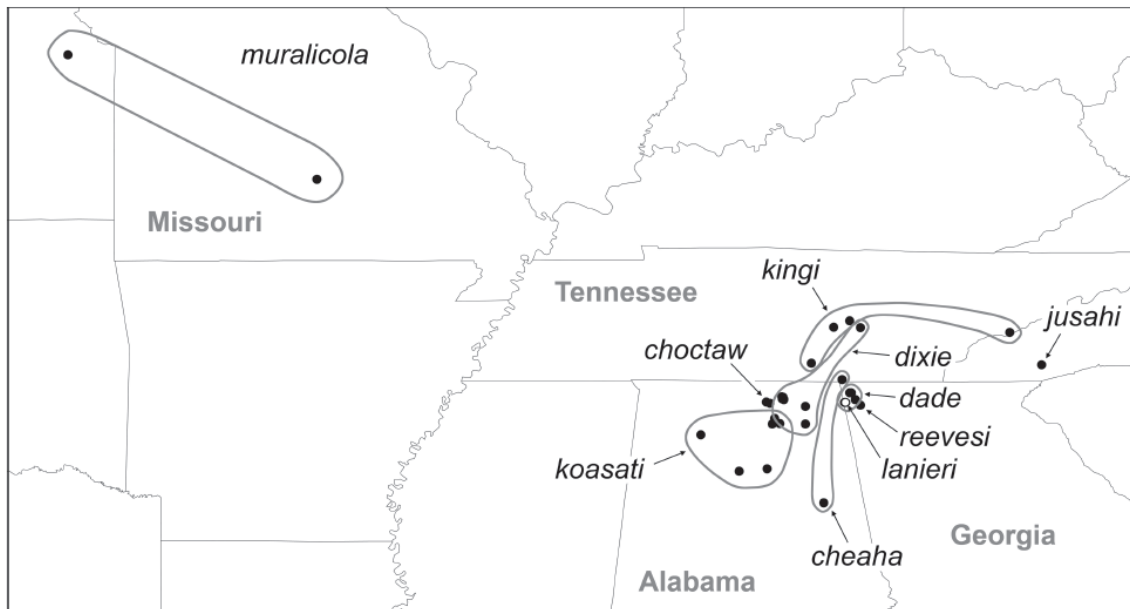


FIG. 1875. Known distribution of the *Pholcus kingi* species group.

p. 395

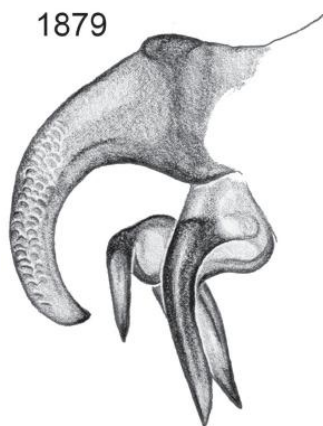


FIG. 1878-1887. Left bulbal uncus and appendix, prolateral views (1878-1886; all at same scale) and left procurus, retrolateral view (1887) of representatives of the *Pholcus kingi* species group. 1879. *Ph. dixie*.

*Pholcus dixie* n. sp.

Figs. 1801, 1879, 1890, 1891

*Type.* Male holotype from USA, Alabama, Jackson Co., Sheldons Cave, 1 mi N Scottsboro [34°41'N, 86°02'W], 21.iii.1966 (S. Peck), in AMNH.

*Etymology.* Dixie is a nickname for the Southern United States, with Alabama as the “Heart of Dixie” due to its geographical location within the region; noun in apposition.

*Diagnosis.* Distinguished from similar species (all *Pholcus* from TGA area) by details of uncus and appendix (Fig. 1879); from other congeners also by straight procurus (cf. Fig. 1877) and weakly sclerotized epigynum (similar to *Ph. kingi*).

*Male* (holotype). Total body length 5.5, carapace width 1.55. Leg 1: 57.6 (14.0 + 0.7 + 14.1 + 26.4 + 2.4), tibia 2: 9.5, tibia 3: 6.4, tibia 4: 7.9; tibia 1 L/d: 97. Habitus similar to *Ph. kingi* (cf. Figs. 1771, 1772). Carapace ochre-yellow with large brown mark partly divided medially, ocular area and clypeus not darkened, sternum ochre-yellow, margins and behind labium brown, legs light brown, tips of femora and tibiae slightly lighter, darker rings on femora subdistally and in patella area, abdomen ochre-gray, with very indistinct darker internal spots visible through cuticle. Distance PME-PME 205  $\mu$ m, diameter PME 140  $\mu$ m, distance PME-ALE 35  $\mu$ m, distance AME-AME 45  $\mu$ m, diameter AME 85  $\mu$ m. Ocular area moderately elevated, few slightly stronger hairs posteriorly. No thoracic furrow; clypeus unmodified. Chelicerae as in *Ph. muralicola* (cf. Fig. 1913), distal frontal apophyses with three modified hairs each. Sternum wider than long (1.1/0.9), unmodified. Palps in general as in *Ph. kingi* (cf. Figs. 1876, 1877), procurus apparently with one short thick spine and

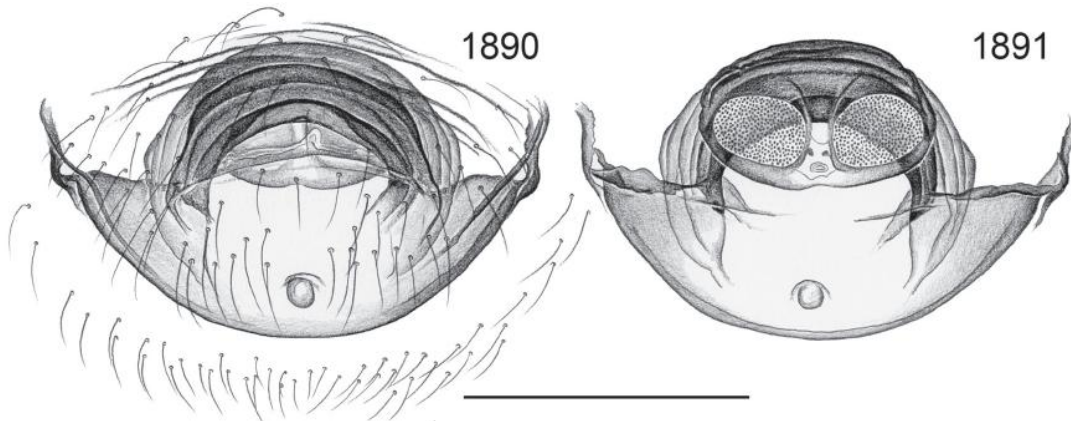


FIG. 1888-1891. Cleared female genitalia in ventral (left) and dorsal views. 1888, 1889. *Ph. kingi*. 1890, 1891. *Ph. dixie*. Scale line (for all): 0.5.

two longer and thinner spine-like hairs, complex distinctive appendix (Fig. 1879). Legs without spines and curved hairs, few vertical hairs (most hairs missing); retrolateral trichobothrium on tibia 1 at 6%; prolateral trichobothrium absent on tibia 1, present on other tibiae; only ~10 pseudosegments distally on tarsus 1 fairly distinct.

*Variation.* Tibia 1 in 7 other males: 10.7-14.5 (mean 13.1); there is slight variation among males in uncus length, trochanter apophysis shape, dorsal procurus apophysis length, and the presence of a brown median line on the ocular area. In males from Buck's Pocket State Park the appendix processes also differ slightly in shape and relative position; they are therefore assigned tentatively.

*Female.* In general similar to male, eye triads slightly closer together (distance PME-PME 170  $\mu$ m); tibia 1 in 7 females: 9.7-11.9 (mean 10.5). Sternum pattern mostly as in males; one female from Buck's Pocket State Park with light marks medially and near coxae. Epigynum weakly sclerotized, slightly protruding, with internal arc visible through cuticle anteriorly, small 'knob' (Fig. 1890); internal genitalia as in Figs. 1801 and 1891.

*Distribution.* Known from Alabama and Tennessee (Fig. 1875).

*Material examined.* USA: *Alabama:* Jackson Co., 1 mi N Scottsboro: ♂ holotype above. Clear Creek [~34°47'N, 86°19'W], vi.1940, collector not given, 3♂2♀ in AMNH. Mc Farland Cave (34°46.1'N, 86°18.3'W), 28.vi.2007 (J.C., J.G., A.M. & H.S. Godwin), 3♀ in ZFMK; same locality, 29.ii.1940 (Jones, Archer), 1♂ in AMNH. Cassius Cave (34°46.4'N, 86°18.1'W), 8.vi.2006 (J.C. Godwin, G.G. Sorrell, L. de Souza, S. Lindsey), 1♂1♀ in ZFMK. Salpeter Cave (34°46.6'N, 86°19.3'W), 13.xi.2007 (J.C. Godwin, G.G. Sorrell), 1♀ in ZFMK. Steamed Chicken Pit (34°48.1'N, 86°19.7'W), 14.xi.2007 (J.C. Godwin, G.G. Sorrell), 1♀ in ZFMK. Tony Cave (34°47.8'N, 86°18.9'W), 28.vi.2007 (J.C., J.G., A.M. & H.S. Godwin), 1♀ in ZFMK. Madison Co., Herrin Cave, New Hope [~34°32'N, 86°25'W], 12.i.1939, collector not given, 1♂ in AMNH. *Tennessee:* Van Buren Co., Fall Creek Falls State Park [35°40'N, 85°21'W], 27.ix.1988 (J.C. Godwin), 2♂ in ZFMK. De Kalb Co., 5 mi SW Smithville [~35°55'N, 85°53'W], Fox Cave, 27.xii.1956 (T.C. Barr), 1♂ in AMNH.

*Assigned tentatively.* USA: *Alabama:* De Kalb Co., Buck's Pocket State Park [34°28'N, 86°02'W], forest, shrub layer, cliffs, 19.vi.1984 (J. Coddington), 2♂1♀ in USNM; same data but "general", 1♂1♀ in USNM.