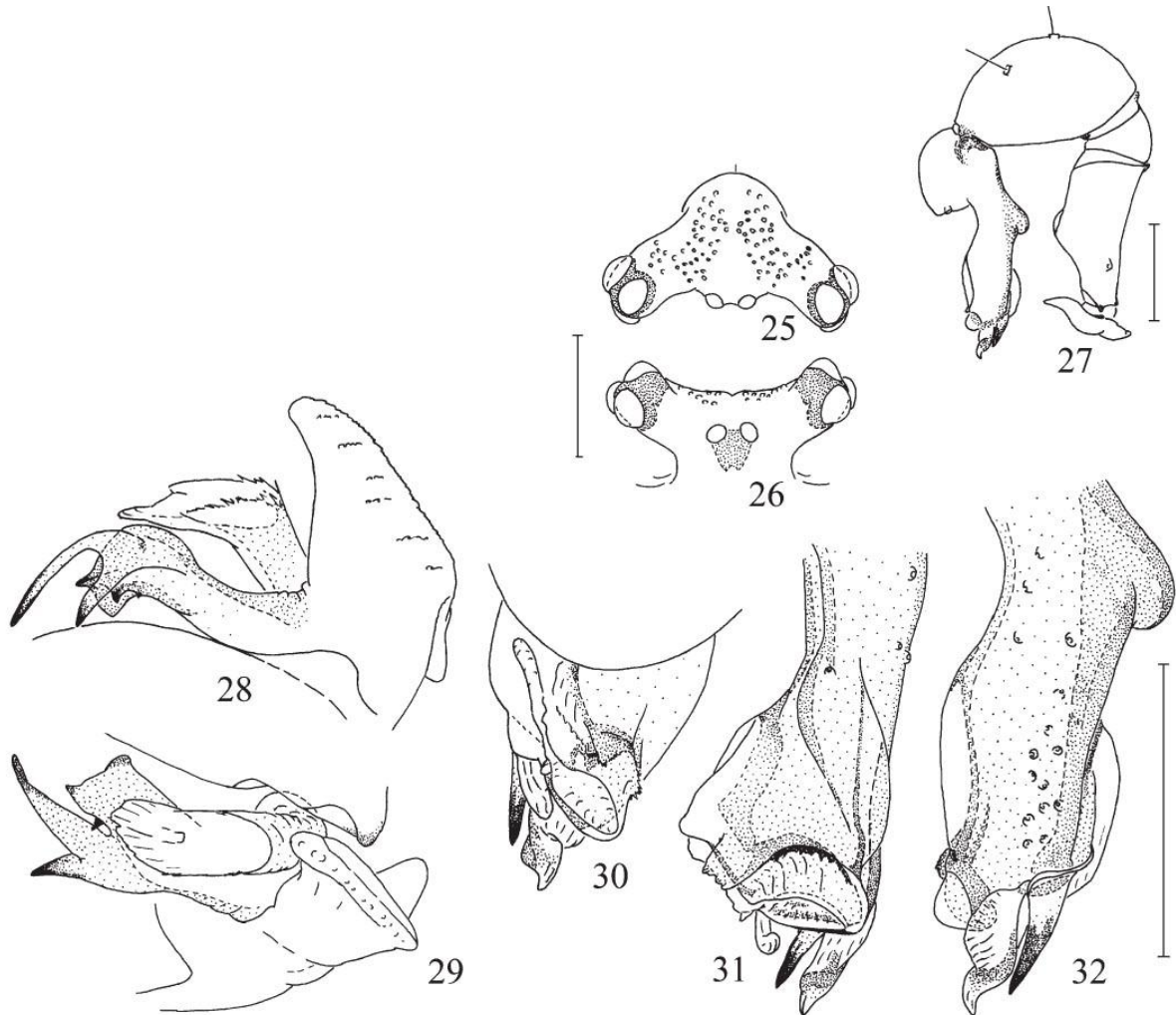


***Pholcus elymaeus* Senglet, 2008**

**Senglet, A. 2008.** New species of *Pholcus* and *Spermophora* (Pholcidae, Araneae) from Iran and Afghanistan, with notes on mating mechanisms. *Rev. suisse Zool.* 115: 355-376.

p. 359



*Pholcus elymaeus* sp. n., male. (25) Ocular group, dorsal view. (26) Same, anterior view. (27-32) Left male palp. (27) Entire palp, retrolateral view. (28) Bulbal apophyses, prolateral view. (29) Same, dorsal view. (30) Procurrus, prolateral view. (31) Same, dorsal view. (32) Same, retrolateral view. Scale 0.5 mm.

*Pholcus elymaeus* sp. n.

Figs 25-32, 51-52

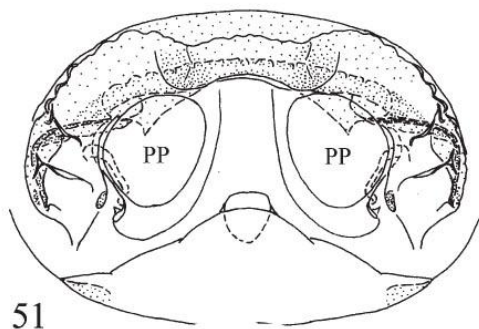
MATERIAL EXAMINED: Holotype ♂, IRAN, Kordestan, Near Kermanshah, 34°24'N 47°10'E, 30/6/1974. – Paratypes, 1 ♂, 3 ♀ (1 ♂, 1 ♀ rehydrated); same locality as holotype. All specimens were collected in a small cave.

DESCRIPTION: Prosoma marking dark dorsal bilobate pattern diverging into four more or less ragged narrow branches. Opisthosoma elongated.

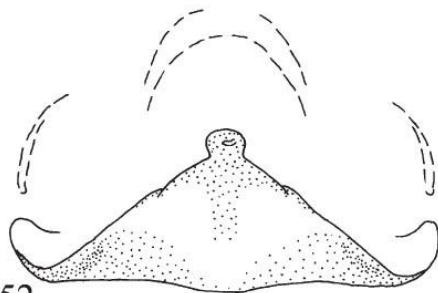
Male (holotype): Total length 4.40. Prosoma 1.40 long, 1.40 wide. Eye sizes and interdistances: AME 0.08, PME 0.14; PME-PME 0.51, PME-ALE 0.025. Ocular group 0.92 wide. Chelicera bearing an anterior-basal retrolaterally directed blunt hook, a conical retrolateral-basal and a prolateral-apical apophysis with two gripping teeth. Pedipalp (Figs 27, 30-32): Trochanter apophysis medium-sized; femur with a strong bump in its basal third; procurus with a partially sclerotized prolateral lamina and a strong acute terminal apophysis. Bulbal apophyses (Figs 28-29): Uncus with a large basal protrusion. Appendix bifid; its retrolateral branch truncated, with the prolateral margin terminating in an acute point, a diverging tooth underneath; its prolateral branch divided into two tapering ribbons.

Female: Total length 5.80. Prosoma 1.55 long, 1.70 wide. Eye sizes and interdistances: AME 0.10, PME 0.14; PME-PME 0.30, PME-ALE 0.02. Ocular group 0.70 wide. Genital plate (Fig. 52) triangular, with short anterior tubercle apophysis; median arch and lateral margins of ventral vulval sclerite often visible through the cuticle. Vulva (Fig. 51): Narrow dorsal sclerite with two dorsal bumps.

ETYMOLOGY: The species name, an adjective, is derived from Elymais, an antique region of Iran.



51



52

(51-52) *Pholcus elymaeus* sp. n. (51) Vulva, dorsal view. (52) Genital plate.

PP = pore-plate. Scale 0.5 mm.

Huber, B. A. 2011. Revision and cladistic analysis of *Pholcus* and closely related taxa (Araneae, Pholcidae). Bonner zool. Monographien 58: 1-510.

p. 374

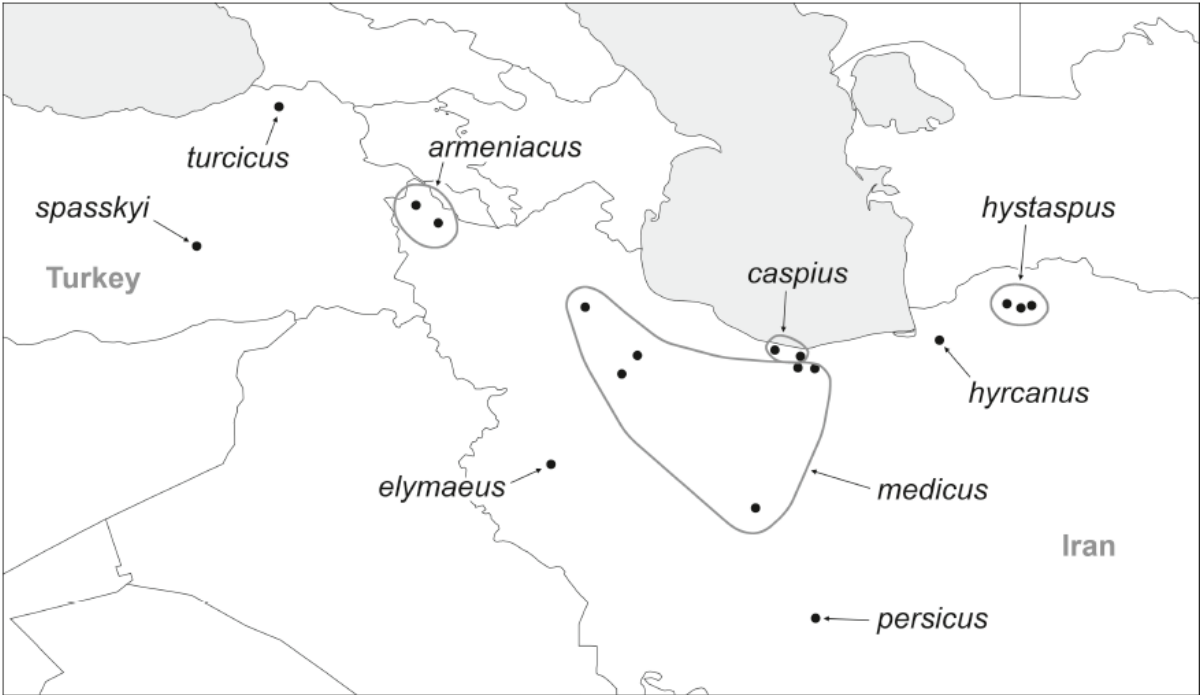


FIG. 1817. Known distribution of the *Pholcus phalangioides* species group (the cosmopolitan *Ph. phalangioides* is excluded; for *Ph. alticeps*, see Fig. 1818).