

***Pholcus gaoi* Song & Ren, 1994**

Song, D., Ren, L. 1994. Two new species of the genus *Pholcus* from China (Araneae: Pholcidae). J. Hebei Normal Univ. (Nat. Sci.), Suppl. 1994: 19-23.

p. 20

**高氏幽灵蛛, 新种 *Pholcus gaoi* sp. nov. (图1-7)**

正模♀, 配模♂, 副模2♀♀4♂♂, 辽宁省宽甸县, 1986年6月, 高树森采。

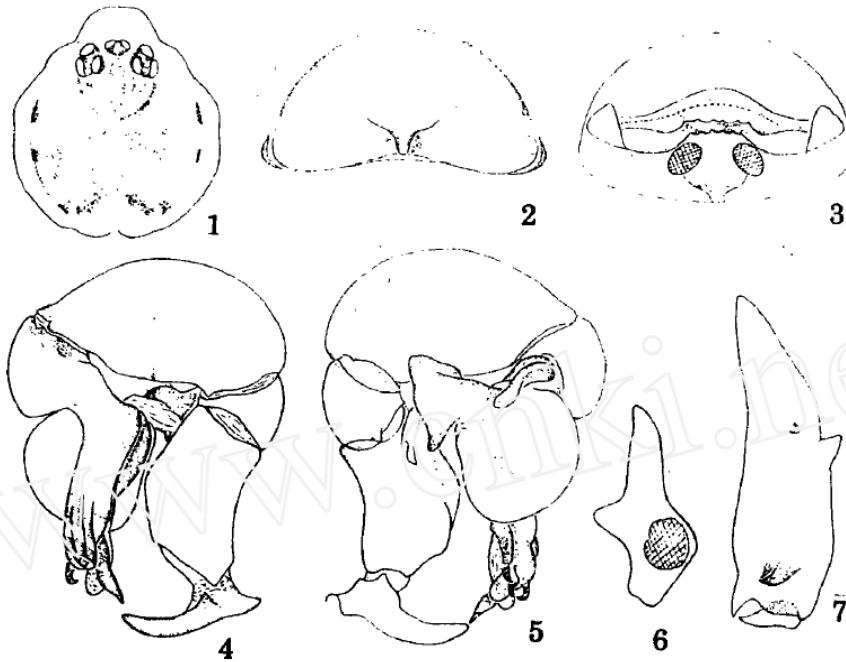


图1-7 高氏幽灵蛛 新种 *Pholcus gaoi* sp. nov.

1. 头胸部背面观(cephalothorax, dorsal view) 2. 外雌器外面观(epigynum, external view) 3. 同上, 内面观(do., vulva) 4. 雄蛛左触肢器外侧面观(♂ left palpal organ, exo-lateral view) 5. 同上, 内侧面观(do., endo-lateral view) 6. 雄蛛触肢转节(♂ trochanter of palp) 7. 雄蛛螯肢(♂ chelicera)

雌蛛体长5.8~6.1。正模体长6.0。头胸部长1.5, 宽1.8; 腹部长4.2, 宽2.8。头部隆起, 眼位于隆起的前半部。背甲黄色, 后中眼后至隆起的后缘间的中央有一褐色棒状斑, 胸部中线的两侧有对称的褐色花斑。额区向前倾斜, 黄褐色。从背面观察, 8眼两列、后凹, 各眼基均有黑色环。前中眼间距小于前中侧眼间距(0.03:0.05), 后中眼间距大于后中侧眼间距(0.23:0.05)。中眼区前边小于后边, 长小于宽。各眼直径之比为: 前中眼<后中眼<前侧眼=后侧眼(0.10:0.13:0.14:0.14)。螯肢黄色, 前齿堤有1齿, 后齿堤无齿。颚叶、下唇及胸板均为黄色, 胸板中线的两侧具不明显的浅褐色放射状纹。步足黄色, 有黄褐色环纹。各步足测量如下: I 30.1(8.4+9.1+10.4+2.2), II 24.3(6.5+6.6+9.1+2.1), III 17.4(5.0+4.9+6.5+1.0), IV 23.9(6.7+6.7+9.3+1.2)。步足式为: 1, 2, 4, 3。腹部卵圆形, 灰黄色, 背面散布黑色小圆点, 腹面无斑。外雌器半圆形, 生殖沟下亦有月形隆起, 该隆起与外雌器隆起相对应, 呈圆形。

雄蛛体长5.5~6.0。配模体长5.6。头胸部长1.6, 宽1.9; 腹部长3.8, 宽1.6。螯肢的前面近基部中央有一大齿突, 近中部外侧有二个齿突。体色及斑纹同雌蛛。各步足测量如下: I 45.6(10.8+12.2+20.2+2.4), II 31.7(8.5+8.5+13.1+1.6), III 22.5(6.4+6.1+8.8+1.2), IV 29.3(8.5

p. 21

+7.6+11.7+1.5)。触肢器的中突呈三角形,插入器筒状。

本新种近于杂斑幽灵蛛 *Pholcus alloctospilus* Zhu et Gong(1991:18–20, fig. 2), 但有如下三点区别:1. 新种触肢器的钩状突呈三角形; 2. 插入器呈筒状; 3. 两种转节距的形状不同。故系一新种。

p. 22

1. *Pholcus gaoi* sp. nov. (figs. 1–7)

Holotype ♀, allotype ♂, paratypes 2♀♀, 1♂♂, Kuandian County (40°7'N, 124°7'E), Liaoning, June, 1986, by Gao Shusen.

Length of females 5.8–6.1. Males 5.5–6.0.

The new species is related to *Pholcus alloctospilus* Zhu et Gong, but differs from the latter in the structure of male palp.

p. 23

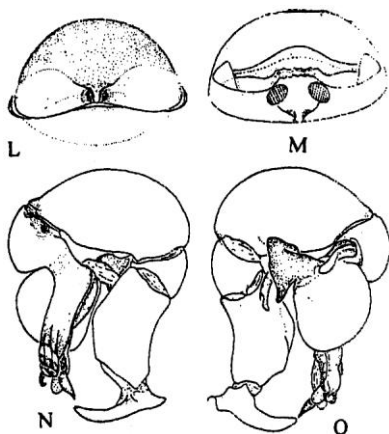
The specific name is a patronym in honor of the collector of the types.

**Song, D., Zhu, M., and Chen, J. 1999.** The Spiders of China. Hebei Science and Technology Publishing House. 640 pp., 4 plates.

p. 57

*Pholcus gaoi* Song et Ren, 1994 (fig. 23L–O)  
*Pholcus gaoi* Song & Ren, 1994: 20, f. 1–7.  
Distribution: Liaoning (Kuandian County).

p. 61



**Zhang, F., Zhu, M.S. 2009.** A review of the genus *Pholcus* (Araneae: Pholcidae) from China. *Zootaxa* 2037: 1-114.

p. 29

***Pholcus gaoi* Song & Ren, 1994**

(Fig. 12)

*Pholcus gaoi* Song & Ren 1994: 20, f. 1–7. Song, Zhu & Chen, 1999: 57, f. 23L–O.

**Diagnosis.** Among its close relatives within *Pholcus* (see the remark of *P. alloctospilus*), this species is very similar to *P. pennatus* in the shapes of the palpal bulb and epigynum, both without appendices of palpal bulb (Fig. 12F) and with knob-shaped epigynal apophysis and a sclerotized arch anteriorly of epigynum (Figs. 12B–C). It can be distinguished from the latter by the shape of the tip of the procurus (Figs. 12F–G), by the longer ventral apophysis of the trochanter (Figs. 12E, F–G) and by the widely separated pore plates.

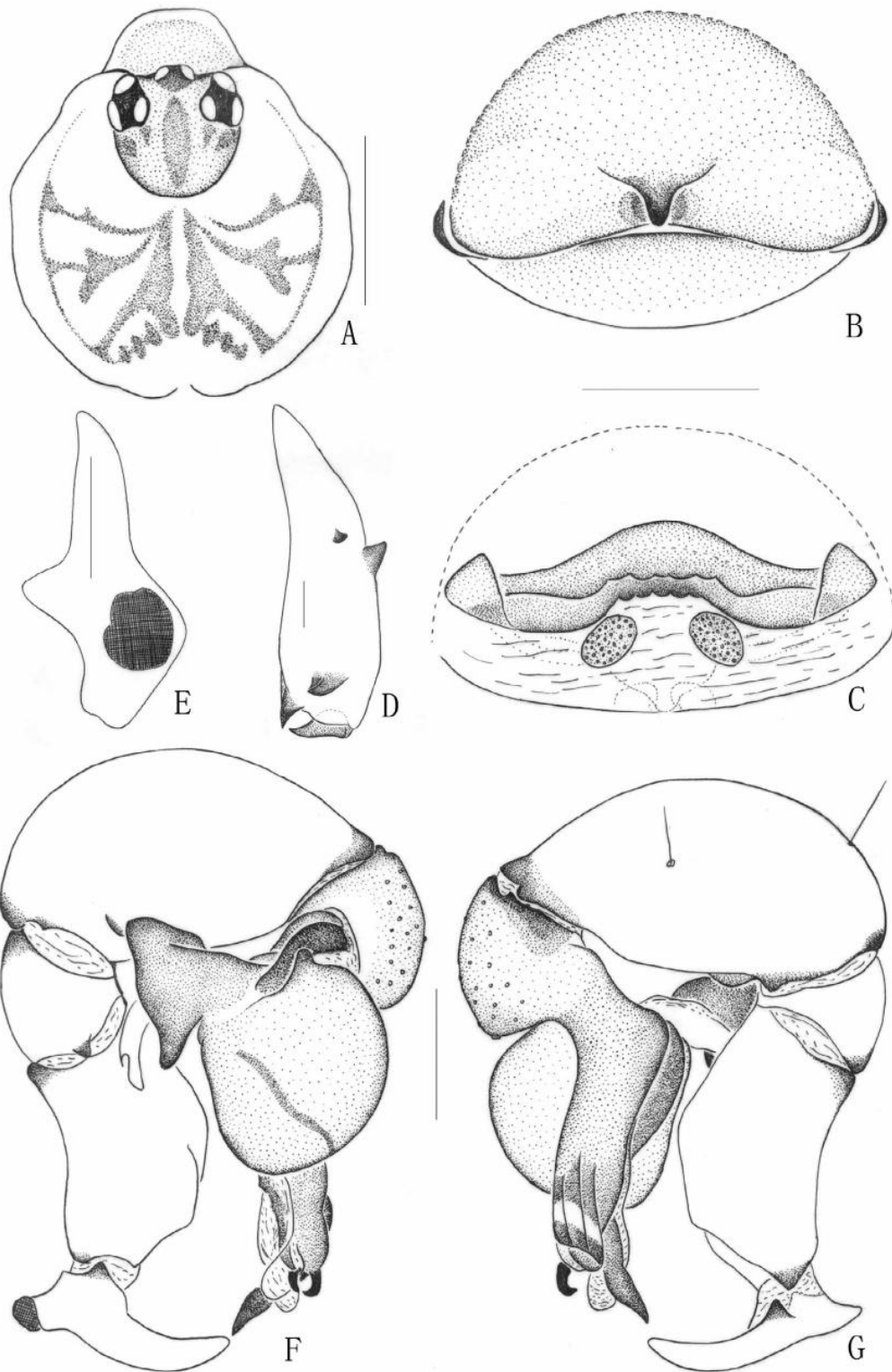
**Redescription.** Male ('allotype'), total length 5.6: cephalothorax 1.6 long, 1.9 wide; abdomen 3.8 long, 1.6 wide. Leg I: 45.6 (10.8+0.7+11.5+20.2+2.4), tibia II: 7.8, tibia III: 5.5, tibia IV: 6.9; tibia I L/D: 67. Carapace short, broad and almost circular, ochre, with pair of brown marks broadly connecting to ocular area. Cephalic region raised, with brown central stripe, ocular area dark yellow. Clypeus 0.43, slightly ochre, with yellow marks. Distance AME–AME 0.04. Diameter AME 0.10, ALE 0.15, PME 0.13, PLE 0.14. Chelicerae as in Fig. 12D, with pair of black apophyses distally, pair of unsclerotized thumb-shaped apophyses proximolaterally and pair of unsclerotized rounded apophyses proximocentrally. Labium and endites yellow. Sternum slightly ochre, with some irregular yellow marks on it. Femora, patellae and tibiae ochre, with dark rings, metatarsi and tarsi brown. Abdomen cylindrical, pale ochre, dorsum with numerous brown spots on it. Venter pale brown, without marks. Palps as in Figs. 12F and 12G, bulb with triangular uncus and short embolus, without appendix. Trochanter with a long ventral apophysis and a short retrolateral apophysis. Tip of procurus with two spine-shaped apophyses and a hook-shaped projection.

**Variation.** Tibia I in four other males: 10.2, 10.8, 11.0, 11.6. Body length in four other males: 4.9–5.5.

Female: in general very similar to male. Body length 5.2–6.0. Female (holotype), total length 6.0: cephalothorax 1.5 long, 1.8 wide; abdomen 4.2 long, 2.8 wide. Tibia I 8.4. Prosoma shape as in Fig. 12A. Distance AME–AME 0.03. Diameter AME 0.10, ALE 0.14, PME 0.13, PLE 0.14. Epigynum roughly semicircular as in Fig. 12B, with a small nipple-shaped apophysis on the top. Dorsal view as in Fig. 12C, with a roughly W-shaped sclerotized arch anteriorly and a pair of oval pore plates.

**Distribution.** Known from type locality only.

**Material examined.** CHINA: **Liaoning**, Kuandian County, June, 1986, leg. S. S. Gao, female holotype, male 'allotype', 4♂, 2♀ paratypes (MHBU).



**FIGURE 12.** *Pholcus gaoi* Song & Ren, 1994 (illustrations modified from Song & Ren 1994). A. female prosoma, dorsal view. B. epigynum, ventral view. C. same, dorsal view. D. male left chelicera, frontal view. E. trochanter of male left palp, retrolaterodorsal view. F. left palp, prolateral view. G. same, retrolateral view. Scale lines: 1.0mm (A), 0.5mm (B–D, F, G), 0.2mm (E).

Huber, B. A. 2011. Revision and cladistic analysis of *Pholcus* and closely related taxa (Araneae, Pholcidae). Bonner zool. Monographien 58: 1-510.

p. 462

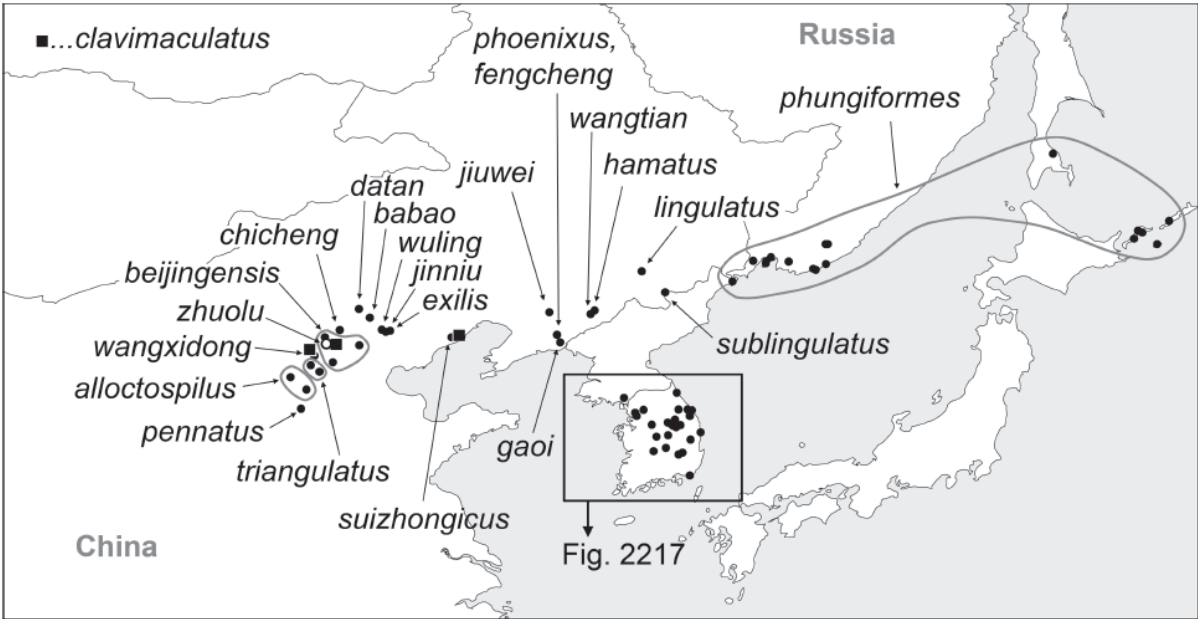


FIG. 2216. Known distribution of the *Pholcus phungiformes* species group. For Korean species, see Fig. 2217.