

Pholcus guani Song & Ren, 1994

Song, D., Ren, L. 1994. Two new species of the genus *Pholcus* from China (Araneae: Pholcidae). J. Hebei Normal Univ. (Nat. Sci.), Suppl. 1994: 19-23.

p. 21

关氏幽灵蛛, 新种 *Pholcus guani* sp. nov. (图8-14)

正模♀, 配模♂, 副模2♀♀3♂♂, 辽宁省北镇县, 1987年8月28日, 关继东采。

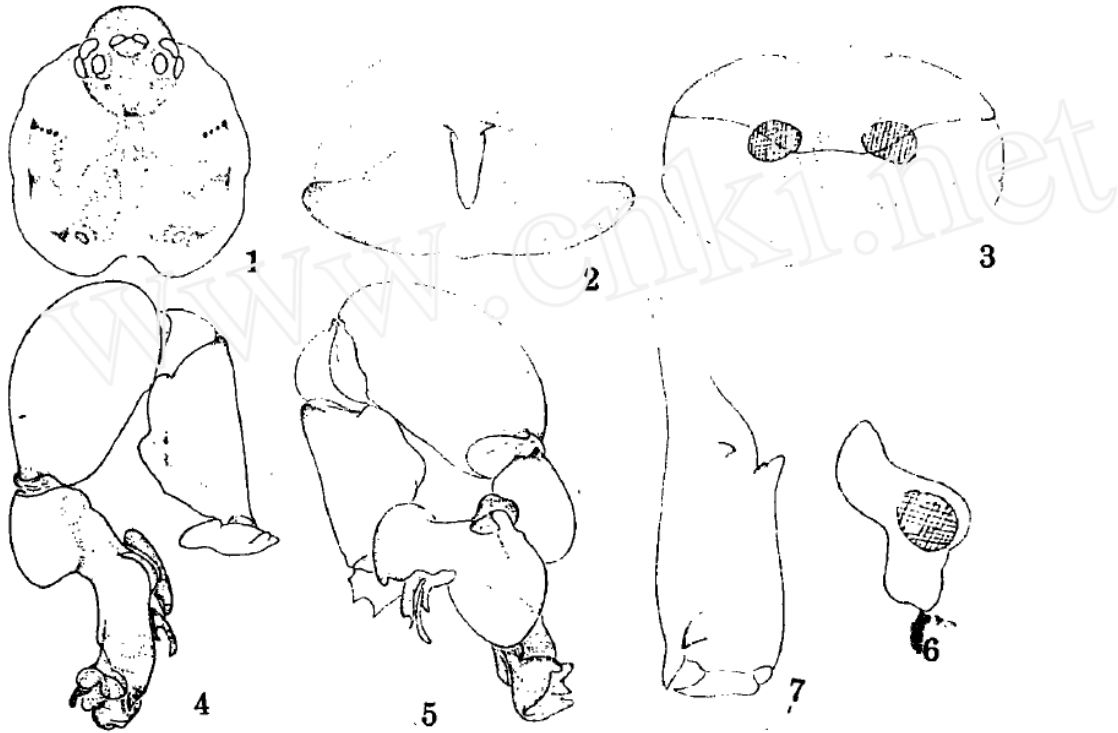


图8-14 关氏幽灵蛛 新种 *Pholcus guani* sp. nov.

1. 头胸部背面观(cephalothorax, dorsal view) 2. 外雌器外面观(epigynum, external view) 3. 同上, 内面观(do., vulva) 4. 雄蛛左触肢器外侧面观(♂ left palpal organ, exo-lateral view) 5. 同上, 内侧面观(do., endo-lateral view) 6. 雄蛛触肢转节(♂ trachea of palp) 7. 雄蛛螯肢(♂ chelicera)

雌蛛体长4.3~5.1。正模体长5.1。头胸部长1.4, 宽1.4; 腹部长3.4, 宽1.5。头部隆起, 眼位于隆起的前半部。背甲浅桔黄色, 后中眼后至隆起的后缘间的中央有一黄褐色棒状斑, 棒状斑的左右各有一黄褐小圆点, 隆起的侧缘又各有一半圆形黄褐斑。胸部的中线两侧有对称的黄褐色花斑。额部前伸, 黄褐色。从背面观察, 8眼两列、后凹, 各眼基部均有黑色环。前中眼间距等于前中侧眼间距(0.05:0.05), 后中眼间距大于后中侧眼间距(0.18:0.03)。中眼区前边小于后边, 长小于宽。各眼直径之比为: 前中眼<后中眼=后侧眼<前侧眼(0.08:0.13:0.13:0.015)。螯肢浅黄褐色, 前齿堤有1齿, 后齿堤无齿。颚叶, 下唇及胸板均为黄色, 胸板散布黄褐小点, 又在其后半部的正

p. 22

中有一个三角形黄褐斑。步足黄色，有黄褐色环纹。各步足测量如下：I 30.8(8.6+9.6+10.4+2.2)，II 24.3(6.3+6.4+10.1+1.5)，III 17.5(4.9+4.9+6.6+1.1)，IV 23.6(6.7+6.5+9.0+1.4)。步足式为：1,2,4,3。腹部卵圆形，背面灰黄色，散布黑棕色斑点；腹面灰黄色，两侧呈黄色。外雌器半圆形，中央有一长的垂体。

雄蛛体长4.9~5.5。配模体长4.9。头胸部长1.9，宽1.75；腹部长3.0，宽1.5。螯肢黄色，前面近基部偏内侧有一大齿突，近中部偏外侧有二个齿突，其中外侧缘的齿突分为二叉。体色及斑纹同雌蛛。各步足测量如下：I 45.9(13.4+13.9+16.2+2.4)，II 36.9(9.9+10.1+15.3+1.6)，III 24.8(7.3+6.9+9.7+1.2)，IV 32.1(9.3+8.7+12.7+1.4)。触肢器中突呈斧状，插入器呈筒状，其前侧有一分叉的跗器。

本新种近于武夷幽灵蛛 *Pholcus wuyiensis* Zhu et Gong (1991: 23–24, fig. 5)，但有如下三点区别：1. 新种跗前突上无刷状突；2. 外雌器垂体较长；3. 两种头胸背面斑纹不同。故系一新种。

p. 23

2. *Pholcus guani* sp. nov. (figs. 8–14)

Holotype ♀, allotype ♂, paratypes 2♀ 3♂, Beizhen County (34°1'N, 121°7'E), Liaoning, August 28, 1987, by Guan Jidong.

Length of females 4.3–5.1. Males 4.9–5.5.

The new species resembles *Pholcus wuyiensis* Zhu et Gong, but differs from the latter in color pattern of carapace different, lacking of brush-like projection on the protarsus, and in longer scape of female epigynum.

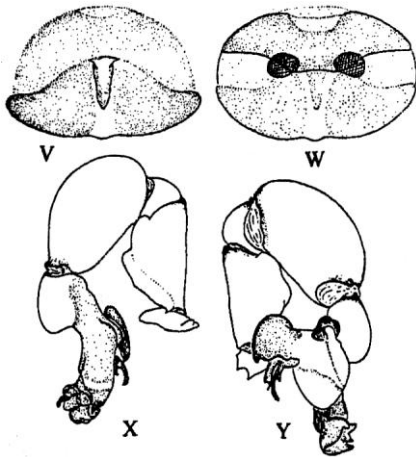
The specific name is a patronym in honor of the collector of the types.

Key words Araneae; Pholcidae; *Pholcus*; new species

Song, D., Zhu, M., and Chen, J. 1999. The Spiders of China. Hebei Science and Technology Publishing House. 640 pp., 4 plates.

p. 57

Pholcus guani Song et Ren, 1994 (fig. 23V–Y)
Pholcus guani Song & Ren, 1994: 21, f. 8–14.
Distribution: Liaoning (Beizhen County).



Zhang, F., Zhu, M.S. 2009. A review of the genus *Pholcus* (Araneae: Pholcidae) from China. *Zootaxa* 2037: 1-114.

***Pholcus guani* Song & Ren, 1994**
(Fig. 13)

Pholcus guani Song & Ren 1994: 21, f. 8–14. Song, Zhu & Chen, 1999: 57, f. 23V–Y.

Diagnosis. This species is a relatively special one, with a unique shape of the procurus tip, and resembles *P. qinghaiensis*. It can be distinguished from the latter by the appendix with a longer branch proximally (Fig. 13F), by the shape of tip of the procurus (Figs. 13F–G), and by the long, cone-shaped apophysis of the epigynum (Fig. 13B).

Redescription. Male ('allotype'), total length 4.9: cephalothorax 1.9 long, 1.8 wide; abdomen 3.0 long, 1.5 wide. Leg I: 45.9 (13.4+0.8+13.1+16.2+2.4), tibia II: 9.4, tibia III: 6.3, tibia IV: 8.1; tibia I L/D: 77. Carapace short, broad and almost circular, ochre, with brown mark broadly connecting to ocular area. Cephalic region raised, with brown marks and pair of brown dots centrally, ocular area dark yellow. Clypeus 0.40, slightly ochre, with yellow marks. Distance AME–AME 0.05. Diameter AME 0.09, ALE 0.15, PME 0.13, PLE 0.14. Chelicerae (Fig. 13D) with pair of black apophyses distally, pair of unsclerotized biforked apophyses proximolaterally and pair of unsclerotized rounded apophyses proximocentrally. Labium light yellow. Endites yellow. Sternum slightly ochre, with numerous irregular yellow marks on it. Femora, patellae and tibiae fawn, with dark rings, metatarsi and tarsi brown. Abdomen cylindrical, pale ochre, dorsum with numerous brown markings. Venter pale brown, without marks. Palps as in Figs. 13F and 13G, bulb with a rounded tile-shaped uncus, appendix with a small branch proximally, trochanter with short ventral apophysis and small retrolateral apophysis.

Variation. Tibia I in other male: 12.9. Body length in other male: 4.8.

Female: in general very similar to male. Body length 4.9–5.1. Female (holotype), total length 5.1: cephalothorax 1.4 long, 1.4 wide; abdomen 3.4 long, 1.5 wide. Tibia I 8.8. Prosoma shape as in Fig. 13A. Distance AME–AME 0.05. Diameter AME 0.08, ALE 0.15, PME 0.13, PLE 0.13. Epigynum roughly triangular as in Fig. 13B, with a median cone-shaped apophysis on the top. Dorsal view as in Fig. 13C, with a V-shaped sclerotized arch anteriorly and a pair of oval pore plates.

Distribution. Known from type locality only.

Material examined. CHINA: **Liaoning**, Beizhen County, August 28, 1987, leg. J. D. Guan, female holotype, male 'allotype', 1♂, 2♀ paratypes (MHBUS).

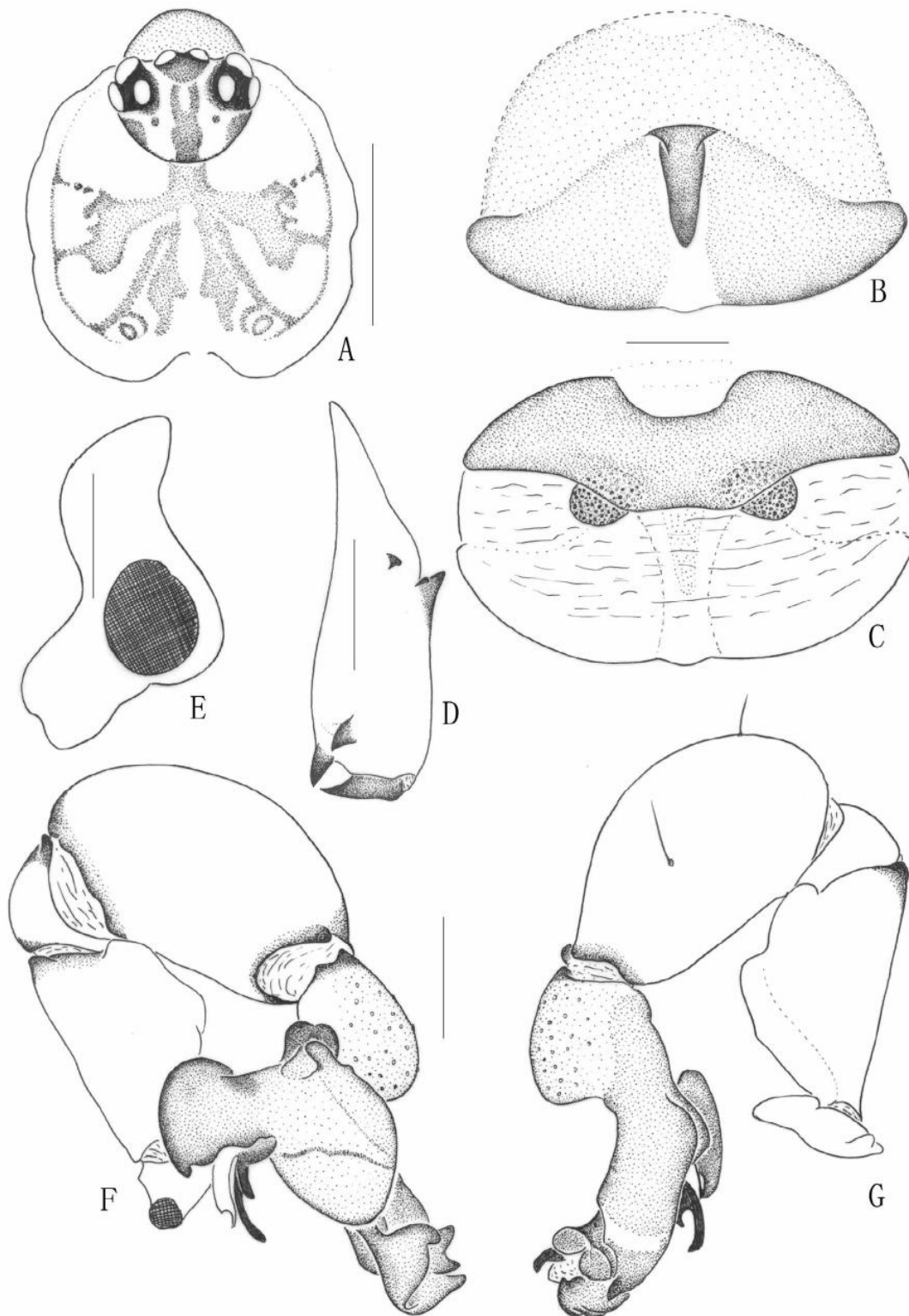


FIGURE 13. *Pholcus guani* Song & Ren, 1994 (illustrations modified from Song & Ren 1994). A. female prosoma, dorsal view. B. epigynum, ventral view. C. same, dorsal view. D. male left chelicera, frontal view. E. trochanter of male left palp, retrolaterodorsal view. F. left palp, prolatral view. G. same, retrolateral view. Scale lines: 1.0mm (A), 0.5mm (B–D, F, G), 0.2mm (E).

Huber, B. A. 2011. Revision and cladistic analysis of *Pholcus* and closely related taxa (Araneae, Pholcidae). Bonner zool. Monographien 58: 1-510.

p. 443

For example, a tibia modification was not illustrated in *Ph. guani* by Song & Ren (1994) and Zhang & Zhu (2009a) but it is predicted to be present.

p. 448



FIG. 2171. Known distribution of the *Pholcus yichengicus* species group.

p. 449

The eastern species that share a long, scape-like epigynal 'knob' (char. 67) (*Ph. guani*, *Ph. harveyi*, *Ph. huberi*, *Ph. parayichengicus*, *Ph. songxian*, *Ph. yichengicus*) may form a monophylum together with the *Ph. taishan* group (Fig. 26).