

## *Pholcus hamatus* Tong & Ji, 2010

Tong, Y., Ji, L. 2010. Three new species of the spider genus *Pholcus* (Araneae: Pholcidae) from Liaodong Mountain, China. Ent. Fenn. 21: 97-103.

p. 98

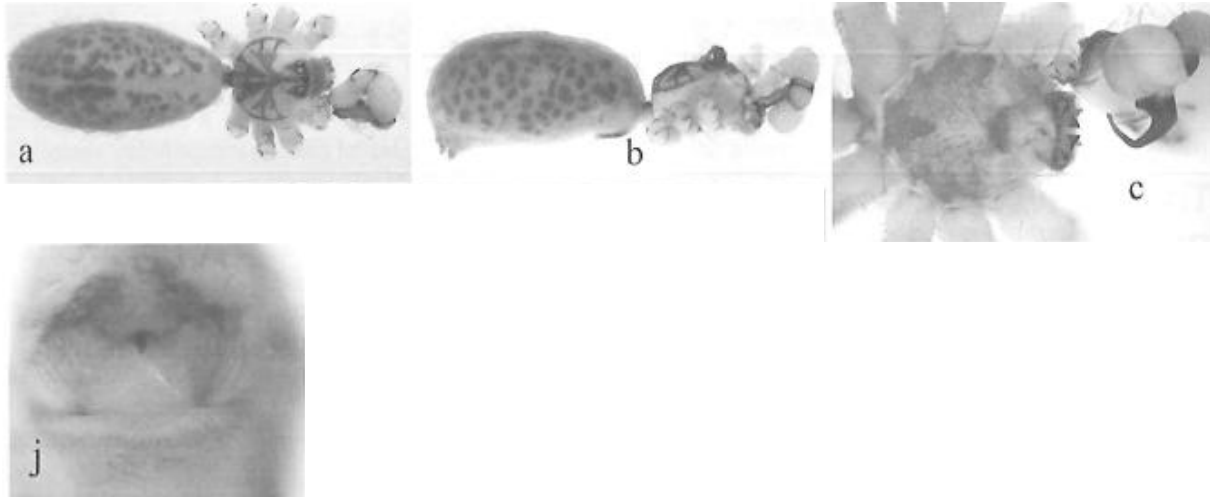


Fig. 1. Habitus, sternum and epigynum of three new *Pholcus* species: *Ph. hamatus* sp. n. (a–c, j),

### 3.1. *Pholcus hamatus* sp. n.

Figs. 1a–c, j, 2, 5.

*Type material.* Holotype male, 9 males and 4 females paratypes, China, Liaoning Province, Benxi, Huanren Manchu Autonomous County, Wunüshan Hill (584 m a.s.l., 41°19'N, 125°25'E), 27.VIII.2008, leg. Y. Tong.

*Diagnosis.* The new species is similar to *Pholcus gaoi* Song & Ren, 1994, but can be distinguished by the shapes of uncus and procurus, the short spur of male palpal trochanter and the wing-like sclerotized arch of female vulva.

*Description.* Male (holotype): total body length 4.95 (5.26 with clypeus): cephalothorax 1.37 long, 1.58 wide; abdomen 3.58 long, 1.76

wide. Leg I: 38.02 (10.14+0.71+10.03+15.43+1.71), tibia II: 6.57, tibia III: 4.57, tibia IV: 6.86; tibia I L/D: 70. Habitus (Figs. 1a, b). Carapace short, broad and almost circular, ochre, with pair of brown marks broadly connecting to ocular area. Cephalic region raised, with brown stripe centrally, ocular area dark yellow. Clypeus dark ochre, without marks. Distance AME–AME 0.06; PME–PME 0.23. Diameter AME 0.11, ALE 0.15, PME 0.13, PLE 0.15. Chelicerae (Fig. 2d) with pair of black apophyses distally, pair of unsclerotized rounded apophyses proximolaterally and pair of black thumb-shaped apophyses proximocentrally. Labium and endites brown. Sternum yellow, with three pairs of marginal marks and one distinctive posterior mark (Fig. 1c). Legs brown, with dark rings on femora, patellae and tibiae; retrolateral trichobothrium of tibia I at 5%. Abdomen cylindrical, pale ochre, dorsum with numerous brown patterns (Figs. 1a, b). Venter pale brown. Palps (Figs. 2a, b, c), bulb with long hook-shaped uncus, without appendix.

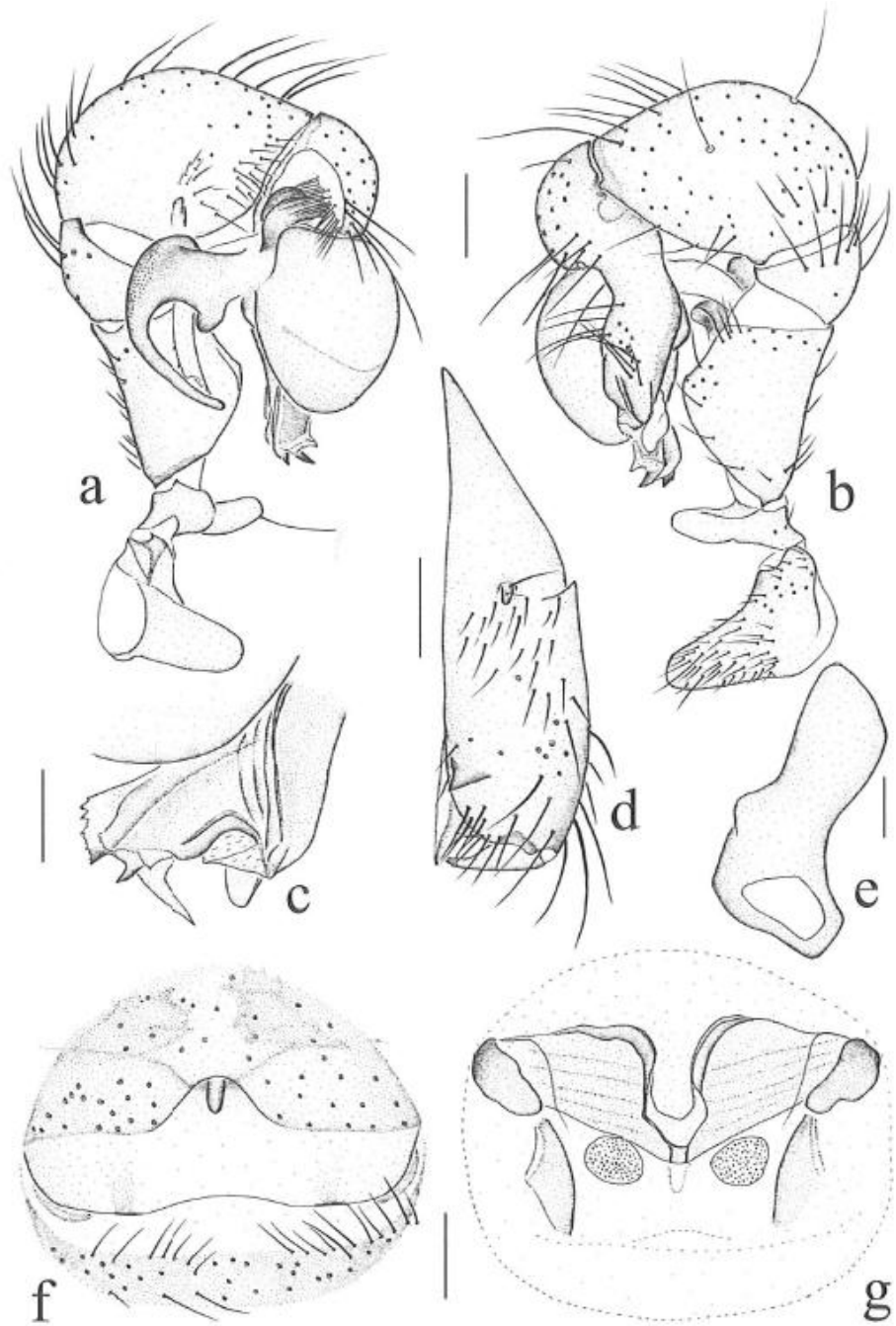


Fig. 2. *Pholcus hamatus* sp. n. – a. Left palp, prolateral view. – b. Left palp, retrolateral view. – c. Distal part of left procursus, dorsal view. – d. Male left chelicera, frontal view. – e. Trochanter of male left palp, retrolaterodorsal view. – f. Epigynum, ventral view. – g. Epigynum, dorsal view. Scale bars: a, b, f, g = 0.3 mm; c, d = 0.2 mm; e = 0.1 mm.

Tarsal organ capsulate.

*Variation.* Tibia I in other males ( $n=9$ ): 8.42–10.53 (mean: 9.28).

*Female.* In general similar to male. Tibia I ( $n=4$ ): 5.79, 6.11, 6.74, 8.32. Epigynum (Figs. 1j, 2f), brownish with distinctive pattern; with short knob-shaped apophysis on top. Dorsal view (Fig. 2g), with wing-like sclerotized arch anteriorly and pair of oval pore plates.

*Distribution.* Known from the type locality only (Fig. 5).

*Etymology.* The species name is an adjective, referring to the long hook-shaped uncus on the male bulb.

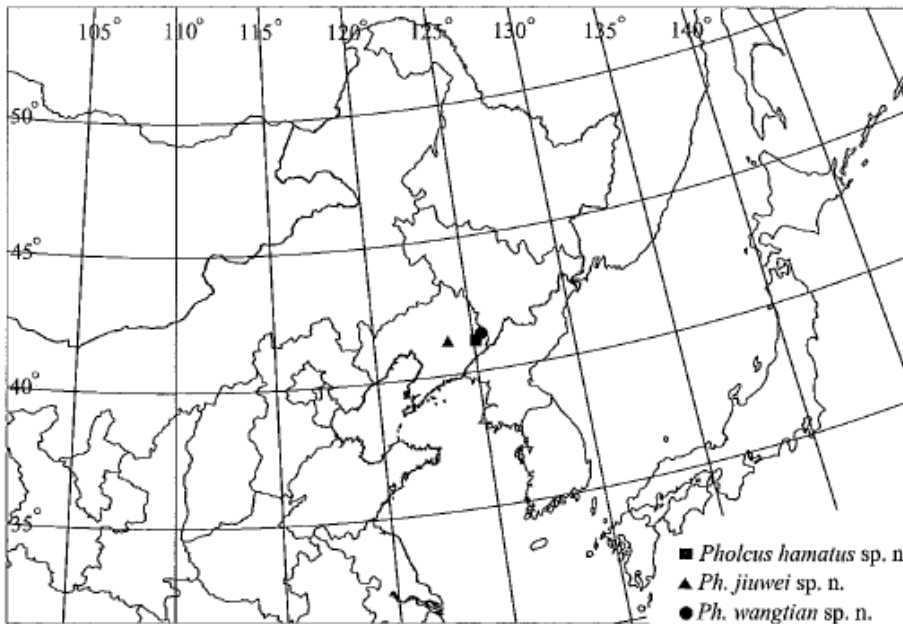


Fig. 5. Localities of three new *Pholcus* species from Liaodong Mountain, China.

**Huber, B. A. 2011.** Revision and cladistic analysis of *Pholcus* and closely related taxa (Araneae, Pholcidae). *Bonner zool. Monographien* 58: 1-510.

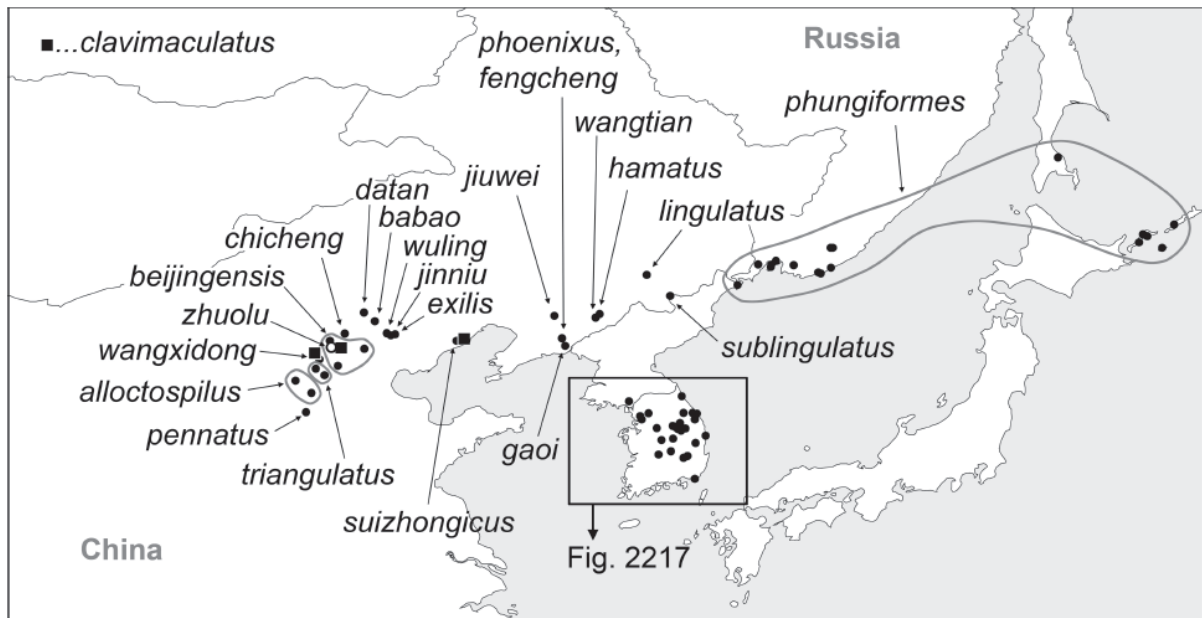


FIG. 2216. Known distribution of the *Pholcus phungiformes* species group. For Korean species, see Fig. 2217.