

## ***Pholcus harveyi* Zhang & Zhu, 2009**

**Zhang, F., Zhu, M.S. 2009.** A review of the genus *Pholcus* (Araneae: Pholcidae) from China. *Zootaxa* 2037: 1-114.

p. 35

***Pholcus harveyi* sp. nov.**

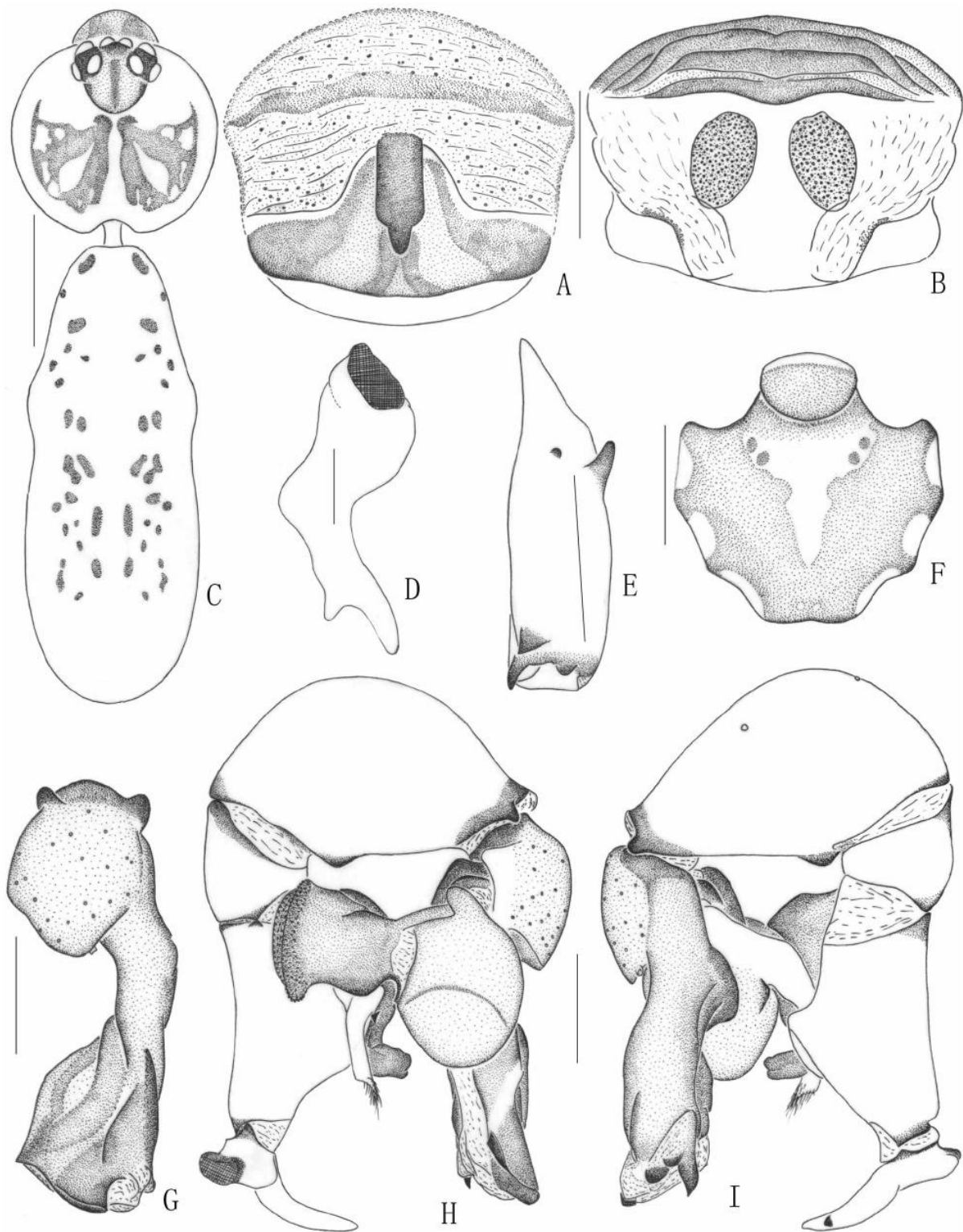
(Fig. 15)

**Types.** Male holotype, 4♂, 16♀ paratypes, CHINA: Henan Province, Luanchuan County [33°42'N, 115°30'E], Mt. Longyuwan, July 20, 2004, leg. M. S. Zhu (MHBU).

**Diagnosis.** Among its relatives within *Pholcus* (see the remark of *P. clavatus*), this species is very similar to *P. huberi* sp. nov., *P. songxian* sp. nov., *P. parayichengicus* sp. nov. (all Henan Province) and *P. yichengicus* (Shanxi Province) in the shapes of the palpal bulb and epigynum, all with a biforked ventral apophysis of trochanter (Figs. 15I, 17I, 33I, 46I and 60I) and a long teat-shaped epigynal apophysis (Figs. 15A, 17A, 33I, 46A and 60A). It can be distinguished from them by the shape of the tip of the procurus and the appendix (Figs. 15G–I); also from *P. huberi* sp. nov. by the branched appendix centrally (Fig. 15H), also from *P. songxian* sp. nov. and *P. parayichengicus* sp. nov. by the cephalic region with brown central marks (Fig. 15C) and also from *P. yichengicus* by the pair of large pore plates (Fig. 15B).

**Etymology.** The specific name is a patronym in honor of Dr. Mark S. Harvey, a well known arachnologist from Australia.

**Description.** Male (holotype): total body length 4.8; cephalothorax 1.4 long, 1.6 wide; abdomen 3.4 long, 1.4 wide. Leg I: 36.3 (9.3+0.7+9.0+14.9+2.4), tibia II: 8.2, tibia III: 4.4, tibia IV: 7.3; tibia I L/D: 64. Prosoma shape as in Fig. 15C. Carapace short, broad and almost circular, ochre, with brown mark broadly connecting to ocular area. Cephalic region raised, with one brown slender central mark, ocular area dark yellow. Clypeus 0.42, ochre, with marks centrally. Distance AME–AME 0.08. Diameter AME 0.09, ALE 0.15, PME 0.14, PLE 0.15. Chelicerae as in Fig. 15E, with pair of black apophyses distally, pair of unsclerotized thumb-shaped apophyses proximolaterally and pair of small unsclerotized rounded apophyses proximocentrally. Labium light yellow. Endites gray. Sternum dark gray, with one central marking and three pairs of pale markings along margin as in Fig. 15F. Femora, patellae and tibiae ochre, with dark rings, metatarsi and tarsi brown. Abdomen cylindrical, pale ochre, dorsum with several small brown markings as in Fig. 15C. Venter pale brown. Palps as in Figs. 15H and 15I, bulb with large uncus having numerous teeth along the margin and hoe-shaped appendix. Procurus as in Fig. 15G. Tarsal organ capsulate.



**FIGURE 15.** *Pholcus harveyi* sp. nov. A. epigynum, ventral view. B. same, dorsal view. C. male body, dorsal view. D. trochanter of male left palp, dorsal view. E. male left chelicera, frontal view. F. male sternum, ventral view. G. left procurrus, dorsal view. H. left palp, prolateral view. I. same, retrolateral view. Scale lines: 1.0mm (C), 0.5mm (A, B, E-I), 0.2mm (D).

**Variation.** Tibia I in four other males: 8.4, 8.4, 8.8, 8.9. Body length in four other males 4.4–4.9.

Female: in general very similar to male. Total length of bodies 4.3–5.2. One paratype (Mt. Longyuwan), total length 4.5: cephalothorax 1.4 long, 1.5 wide; abdomen 3.1 long, 1.4 wide. Tibia I: 6.7. Distance AME–AME 0.06. Diameter AME 0.08, ALE 0.15, PME 0.13, PLE 0.13. Epigynum roughly dome-shaped as in Fig. 15A, with a large necktie-shaped apophysis on the top. Dorsal view as in Fig. 15B, with a wavy sclerotized arch anteriorly and a pair of oval pore plates.

**Distribution.** Known from type locality only.

**Huber, B. A. 2011.** Revision and cladistic analysis of *Pholcus* and closely related taxa (Araneae, Pholcidae). Bonner zool. Monographien 58: 1-510.



FIG. 2171. Known distribution of the *Pholcus yichengicus* species group.

The eastern species that share a long, scape-like epigynal ‘knob’ (char. 67) (*Ph. guani*, *Ph. harveyi*, *Ph. huberi*, *Ph. parayichengicus*, *Ph. songxian*, *Ph. yichengicus*) may form a monophylum together with the *Ph. taishan* group (Fig. 26).