

Pholcus henanensis Zhu & Mao, 1983

Zhu, C., Mao, J., Yu, Z. 1983. Two new species of spiders of the genus *Pholcus* from China (Araneae: Pholcidae). J. Bethune Med. Univ. 9: 135-137.

p. 135

豫幽灵蛛 *Pholcus henanensis* Zhu et Mao, 新种

雌蛛体长 5.72 毫米，头胸部淡黄色，背甲中央有黑褐色花纹，头部隆起，颈沟深凹。8 眼均位于眼丘上，除前中眼外，其它 6 眼组成两个三角形，自背面观察后眼列后凹，前眼列稍后凹，前中眼间距小于前中侧眼间距，后中眼椭圆形，中眼区梯形，宽大于长，后缘大于前缘，8 眼中以前中眼为最小。胸板褐色，后缘钝，中央有一浅色斑，每侧边缘各有 3 个浅色斑。下唇半圆形，宽大于长。螯肢后齿堤 1 齿，前齿堤光滑无齿。步足淡褐色，有深褐色环纹，步足各节无刺，足式 I、IV、II、III。腹部灰色，呈园筒形，背面稍隆起，有不规则的黑褐色斑纹，纺器部位向腹面突出。

雌蛛测量如下（单位：毫米）：体长约 4.52；背甲长约 1.21，宽 1.10；腹部长 3.10，宽 1.51。

	腿节	膝、胫节	后附节	附节	总计
触肢	0.34	0.41		0.39	1.14
I	8.12	9.21	14.31	2.51	34.15
II	6.51	6.12	9.10	2.10	23.83
III	4.50	4.52	6.11	1.50	16.63
IV	6.71	6.52	9.11	1.80	24.14

雄蛛体长 4.33 毫米，背甲长 1.52 毫米，宽 1.51 毫米，腹部长 2.81 毫米，宽 1.40 毫米，体型及体色似雌蛛，螯肢除后齿缘有 1 齿外，背面离体端靠近内缘有一膨大的齿，齿尖朝向螯爪。触肢的转节有一粗壮长距。

步足测量如下（单位：毫米）：

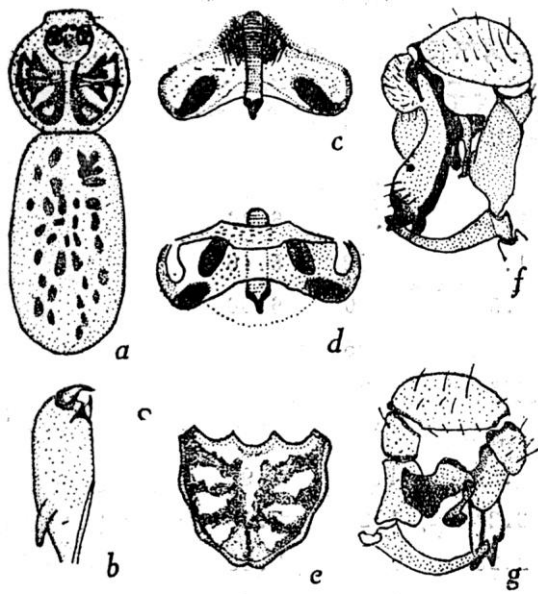
	腿节	膝、胫节	后附节	附节	总计
I	8.21	9.31	14.80	2.53	34.85
II	6.56	6.10	9.10	2.10	23.86
III	4.70	4.60	6.10	1.49	16.89
V	6.81	6.59	9.11	1.80	24.31

本种近似于 *Pholcus montanus* Paik, 1978，但本新种外雌器指状突起贯穿于外雌器的总长，而后者则短；新种触肢基节有长距，而 *P. montanus* 者则甚短。

正模：♀，配模：♂，河南省荥阳，1982.V.20，丘陵洞内，82—290，毛景英、王广钧。模式标本保存于白求恩医科大学生物教研室。

p. 136

副模 ♀♀ 3 ♂♂ 3 幼 3，河南省荥阳，1982.V.25，渡船上，82—310。保存于河南省农业厅植保站。



豫幽灵蛛 *Pholcus henanensis*

- a. 雌蛛背面观
- b. 螯肢前面观
- c. 外雌器外面观
- d. 外雌器内面观
- e. 胸板之斑纹
- f. 触肢器官内面观
- g. 触肢器官外面观

Song, D., Zhu, M., and Chen, J. 1999. The Spiders of China. Hebei Science and Technology Publishing House. 640 pp., 4 plates.

***Pholcus henanensis* Zhu et Mao, 1983**

Pholcus henanensis Zhu & Mao, in: Zhu, Mao & Yu, 1983: 125, f. 1; Zhu, Tu & Shi, 1986: 119, f. 2.

Distribution: Henan, Shanxi.

Zhang, F., Zhu, M.S. 2009. A review of the genus *Pholcus* (Araneae: Pholcidae) from China. *Zootaxa* 2037: 1-114.

p. 37

***Pholcus henanensis* Zhu & Mao, 1983**

(Fig. 16)

Pholcus henanensis Zhu & Mao, in Zhu, Mao & Yu 1983: 135, f. 1a–g.

“*Pholcus henanensis*” Zhu, Tu & Shi 1986: 119, f. 2.1–7, misidentification, see *P. mianshanensis* **sp. nov.** below).

Diagnosis. This species resembles *P. mianshanensis* **sp. nov.**, but can be distinguished from it by the hoe-shaped appendix (Fig. 16D), by the shape of the tip of the procurus (Figs. 16D–F), and by the necktie-shaped apophysis of epigynum (Fig. 16A).

Redescription. Male (‘allotype’, data copied from Zhu, Mao and Yu 1983), total length 4.33: cephalothorax 1.52 long, 1.51 wide; abdomen 2.81 long, 1.40 wide. Leg I: 34.85 (8.21+9.31+14.80+2.53). Carapace short, broad and almost circular, ochre, with brown mark broadly connecting to ocular area. Cephalic region raised, without brown central marks, ocular area dark yellow. Clypeus slightly ochre, with yellow marks. Chelicerae with pair of black apophyses distally and pair of unsclerotized rounded apophyses proximolaterally. Labium and endites yellow. Sternum slightly ochre, with some regular yellow marks on it. Femora, patellae and tibiae ochre, with dark rings, metatarsi and tarsi brown. Abdomen cylindrical, pale ochre, dorsum with numerous brown spots on it. Venter pale brown, without marks. Palps as in Figs. 16D and 16E, bulb with boot-shaped uncus and hoe-shaped appendix. Procurus as in Fig. 16F.

Female: in general very similar to male. Female (holotype, data copied from Zhu, Mao et Yu), total length 4.52: cephalothorax 1.21 long, 1.10 wide; abdomen 3.10 long, 1.51 wide. Epigynum roughly triangular as in Fig. 16A, with a long necktie-shaped apophysis on the top. Dorsal view as in Fig. 16B, with a wavy sclerotized arch anteriorly and a pair of teardrop-shaped pore plates overlapping the arch.

Distribution. Known from type locality only.

Material. Types. Female holotype, male ‘allotype’ (labeled 82–290), from a cave in Xingyang County, Henan Province, China, May 20, 1982, leg. J. Y. Mao and G. J. Wang (BMU); 3♂, 3♀ paratypes (82–310), from a boat, Xingyang County, Henan Province, China, May 25, 1982, leg. J. Y. Mao (HPPS).

Material examined. CHINA: **Henan:** Xingyang County, May 20, 1982, only right palp of male and epigynum (from female holotype and male ‘allotype’).

Remark. The most important characters of this species are the long necktie-shaped apophysis of the epigynum and the long curved ventral apophysis of the trochanter. Six similar species, *P. linzhou*, *P. paralinzhou* **sp. nov.**, *P. yugong* **sp. nov.** (Henan Province), *P. mianshanensis* **sp. nov.**, (Shanxi Province, Mt. Mianshan, Jiexiu County), *P. taishan*, (Shandong Province, Mt. Taishan, Tai’an city), and *P. oculosus* (Hebei Province, Wu’an County) share both a restricted regional distribution and various morphological characters, so we believe they have a relatively close phylogenetic relationship.

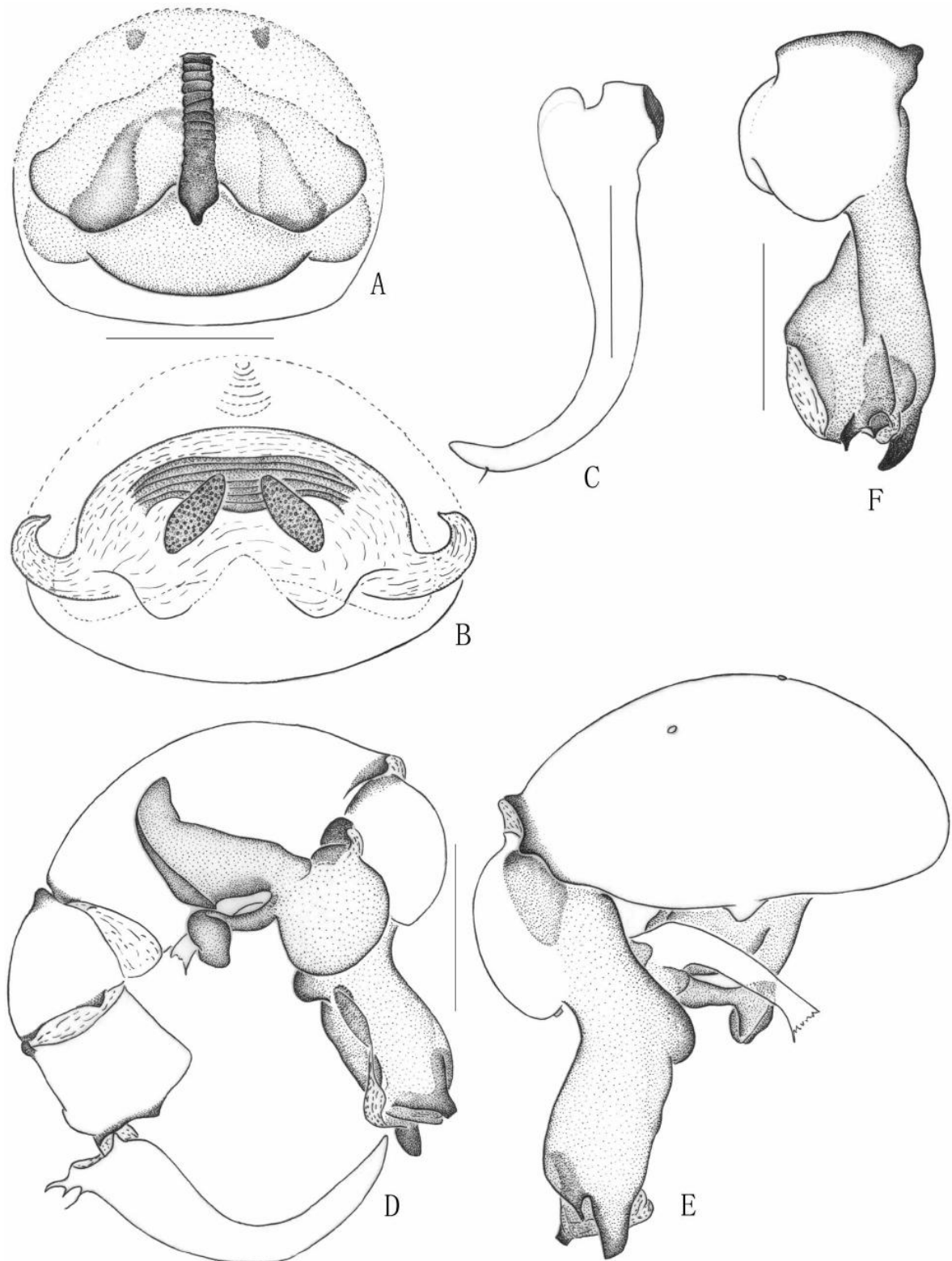


FIGURE 16. *Pholcus henanensis* Zhu & Mao, 1983. A. epigynum, ventral view. B. same, dorsal view. C. trochanter of male left palp, dorsal view. D. left palp, prolateral view. E. same, retrolateral view. F. left procurus, dorsal view. Scale lines: 0.5mm (A-F).

Huber, B. A. 2011. Revision and cladistic analysis of *Pholcus* and closely related taxa (Araneae, Pholcidae). Bonner zool. Monographien 58: 1-510.

p. 456

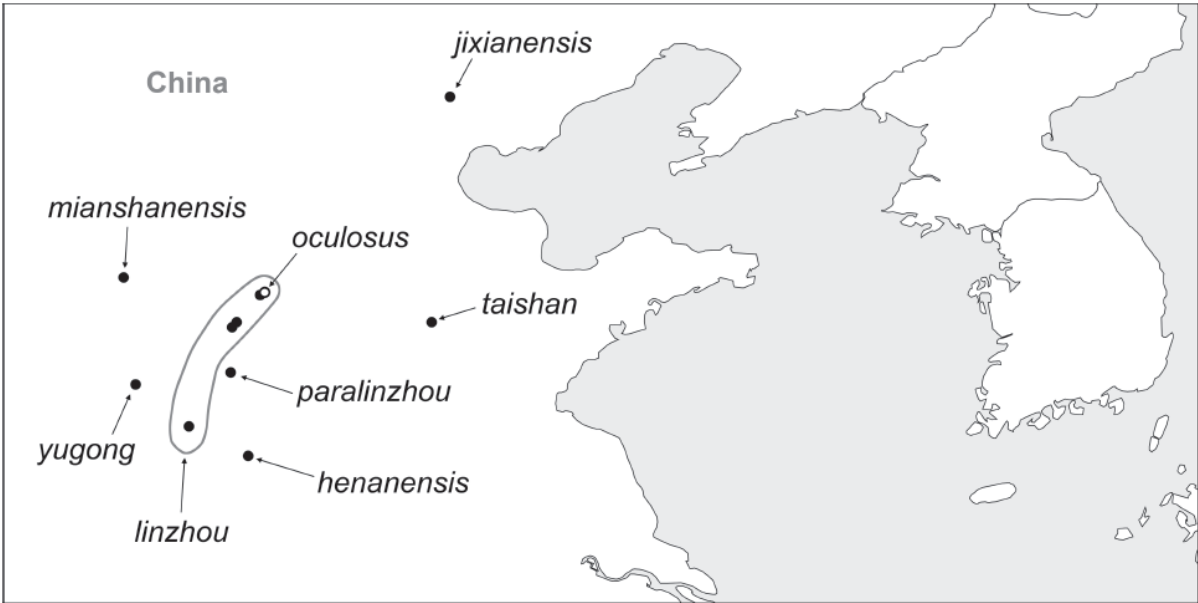


FIG. 2200. Known distribution of the *Pholcus taishan* species group.