

***Pholcus hurau* Huber, 2011**

Huber, B. A. 2011. Revision and cladistic analysis of *Pholcus* and closely related taxa (Araneae, Pholcidae). *Bonner zool. Monographien* 58: 1-510.

p. 146



583, 584, 589. *Ph. hurau*, male, dorsal

and lateral views; male prosoma, frontal view.

p. 152

Pholcus hurau n. sp.

Figs. 583, 584, 589, 654-656

Type. Male holotype from Indonesia, Sumatra, West Sumatra Prov., N of Payakumbuh, cave above Hurau

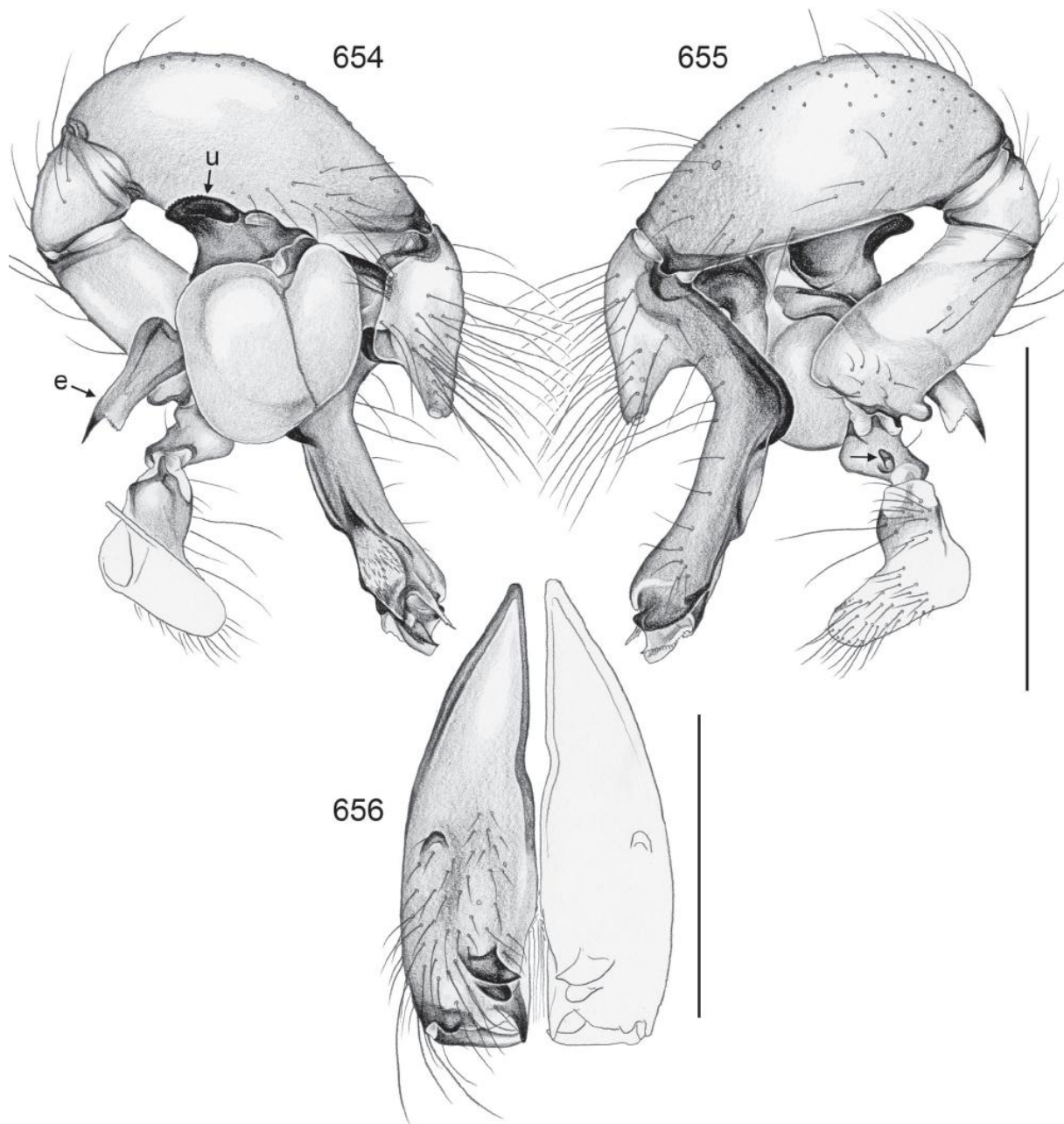


FIG. 654-656. *Pholcus burau*. 654, 655. Left male palp, prolateral and retrolateral views (arrow points at retrolateral trochanter apophysis). 656. Male chelicerae, frontal view. Scale lines: 1.0 (654, 655), 0.5 (656).

Canyon (0°06.4'S, 100°40.6'E), limestone and granite, entrance to 100 m, 700 m a.s.l., 9.vi.2006 (P. Schwendinger), in MHNG.

Etymology. The specific name is a noun in apposition, derived from the type locality.

Diagnosis. Distinguished from most congeners by combination of pointed male eye-stalks (Fig. 589), large sclerotized embolus (Fig. 654), absence of appendix, and hooked apophysis retrolaterally on male

palpal trochanter (Fig. 655); from similar species (*Ph. minang*, *Ph. singalang*) by shapes of procurus and uncus (Figs. 654, 655).

Male (holotype). Total body length 4.4, carapace width 1.3. Leg 1: 12.2 + 0.6 + 12.3, metatarsus and tarsus missing, tibia 2: 7.9, tibia 3: 4.7, tibia 4: 6.7; tibia 1 L/d: 107. Habitus as in Figs. 583 and 584. Carapace light brown, slightly darker medially, ocular area with median brown stripe, clypeus not darkened,

sternum light brown near coxae, lighter medially, legs light brown, patellae and tibia-metatarsus joints darker brown, abdomen ochre-gray with two pairs of indistinct darker marks dorsally, ventrally monochromatic. Distance PME-PME 710 μm , diameter PME 90 μm , distance PME-ALE 35 μm , no trace of AME. Ocular area elevated, few hairs on posterior side, each triad on long stalk with additional pointed process (Fig. 589). No thoracic furrow (only dark line anteriorly); clypeus unmodified. Chelicerae as in Fig. 656, with divided distal apophyses (apparently without modified hairs) and one pair of smaller proximal apophyses. Sternum wider than long (0.80/0.55), unmodified. Palps as in Figs. 654 and 655, coxa unmodified, trochanter with retrolateral apophysis, ventrally only indistinct hump, femur with distinct dorsal apophysis and larger ventral protuberance proximally, tarsus slightly elongated dorsally, procurus simple except distally, with large prolateral branch, bulb with complex uncus with light proximal branch, partly sclerotized long embolus with distal pointed process, without appendix. Legs without spines and curved hairs, few vertical hairs; retrolateral trichobothrium on tibia 1 at 5%; prolateral trichobothrium absent on tibia 1, present on other tibiae.

Female. Unknown.

Distribution. Known from type locality only (Fig. 626).

Material examined. INDONESIA: Sumatra: *West Sumatra Prov.*: N of Payakumbuh: ♂ holotype above.