

***Pholcus jiuwei* Tong & Ji, 2010**

**Tong, Y., Ji, L. 2010.** Three new species of the spider genus *Pholcus* (Araneae: Pholcidae) from Liaodong Mountain, China. Ent. Fenn. 21: 97-103.

p. 98

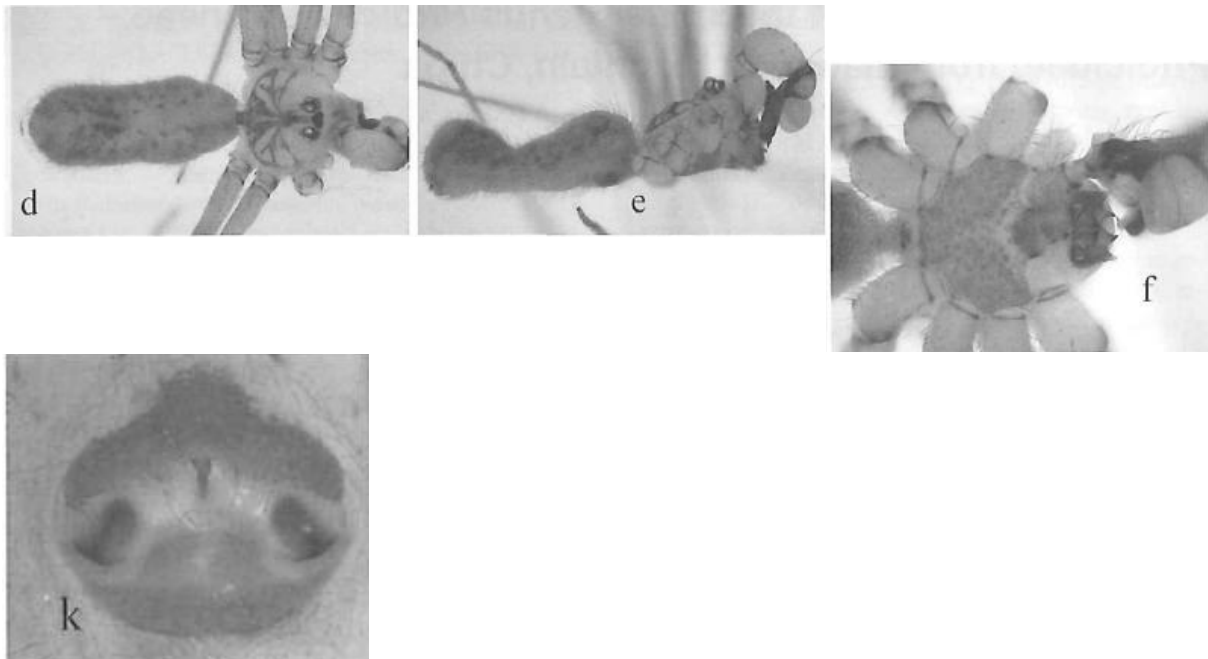


Fig. 1. Habitus, sternum and epigynum of three new *Pholcus* species: *Ph. jiuwei* sp. n. (d–f, k) — a, d, g. Habitus, dorsal view. — b, e, h. Habitus, lateral view. — c, f, i. Sternum, ventral view. — j, k, l. Epigynum, ventral view.

p. 99

**3.2. *Pholcus jiuwei* sp. n.**

Figs. 1d–f, k, 3, 5.

*Type material.* Male holotype, 2 males and 5 females paratypes, China, Liaoning Province,

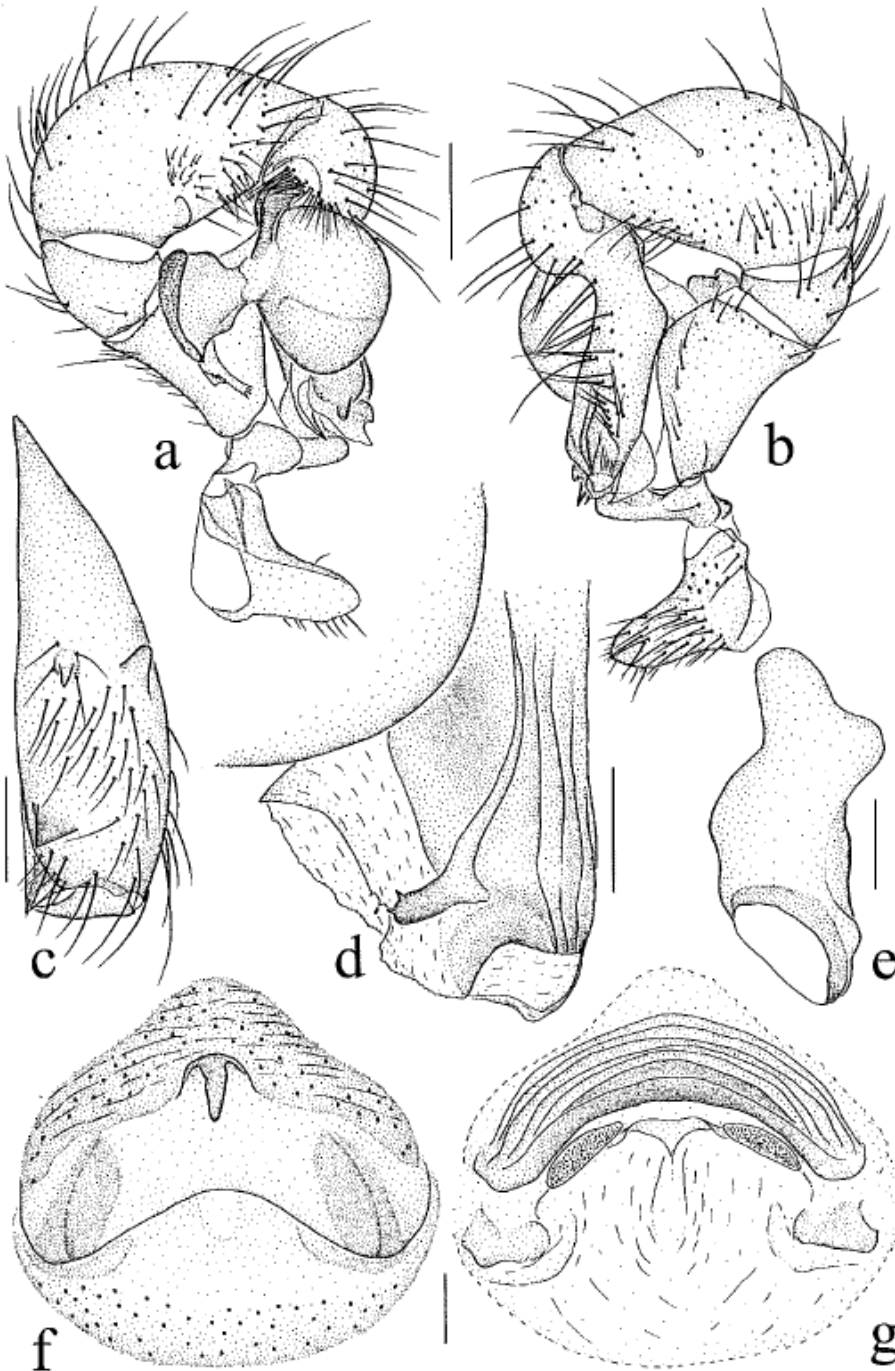


Fig. 3. *Pholcus jiuwei* sp. n. – a. Left palp, prolateral view. – b. Left palp, retrolateral view. – c. Male left chelicera, frontal view. – d. Distal part of left procurus, dorsal view. – e. Trochanter of male left palp, retrolaterodorsal view. – f. Epigynum, ventral view. – g. Epigynum, dorsal view. Scale bars: a–d, f, g = 0.3 mm; e = 0.2 mm.

Benxi, Pingshan District, Xing'an Village (41°15'N, 123°42'E), 11.VIII.2008, leg. J. Bian.

**Diagnosis.** The new species is similar to *Pholcus joreongensis* Seo, 2004, but can be distinguished by the shapes of the procurus and the spur of trochanter, the long knob-shaped apophysis on the top of epigynum and the long and narrow pore plates.

**Description.** Male (holotype): total body length 4.33 (4.67 with clypeus): cephalothorax

1.68 long, 1.7 wide; abdomen 4.21 long, 1.26 wide. Leg I: 40.56 (10.53+0.74+10.63+16.83+1.83), tibia II: 7.37, tibia III: 4.82, tibia IV: 6.74; tibia I L/D: 55. Habitus (Figs. 1d, e). Carapace short, broad and almost circular, ochre, with pair of brown marks broadly connecting to ocular area. Cephalic region raised, with brown stripe centrally, ocular area dark yellow. Clypeus dark ochre, without marks. Distance AME–AME 0.08; PME–PME 0.25. Diameter AME 0.11,

ALE 0.17, PME 0.14, PLE 0.15. Chelicerae as in Fig. 3c, with pair of black apophyses distally, pair of unsclerotized rounded apophyses proximolaterally and pair of black thumb-shaped apophyses proximocentrally. Labium and endites brown. Sternum yellow, with obscure marks along margin (Fig. 1f). Legs brown, with dark rings on femora, patellae and tibiae; retrolateral trichobothrium of tibia 1 at 6%. Abdomen cylin-

drical, pale ochre, dorsum with numerous brown patterns (Figs. 1d, e). Venter pale brown. Palps (Figs. 3a, b, d), bulb with square tile-shaped uncus, without appendix, procurus prolateral-distally with a short stick-shaped projection. Tarsal organ capsulate.

*Variation.* Tibia I in other males ( $n = 2$ , one male leg I lost): 10.21.

*Female.* In general similar to male. Tibia I ( $n$

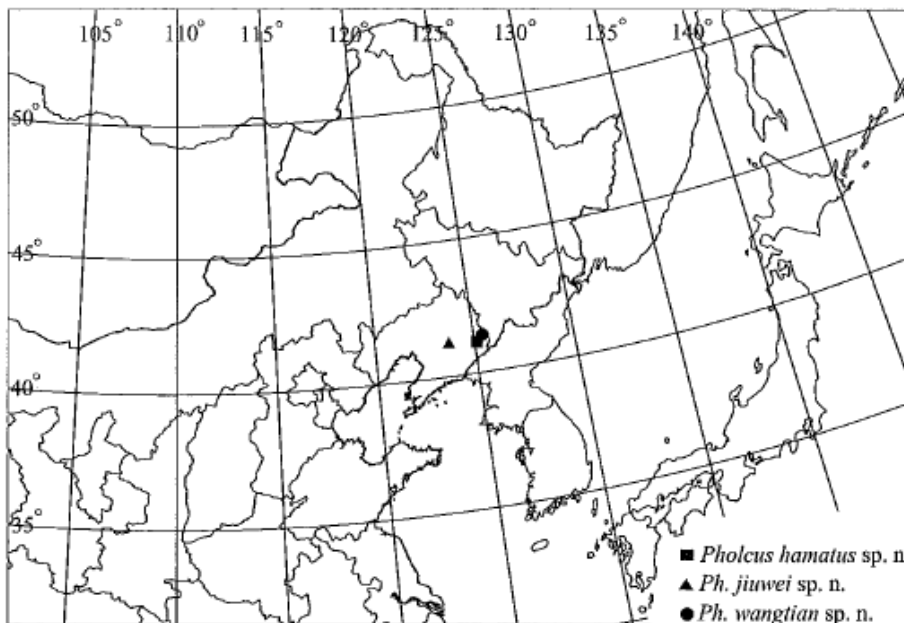


Fig. 5. Localities of three new *Pholcus* species from Liaodong Mountain, China.

= 5): 7.78–8.42 (mean: 8.09). Epigynum (Figs. 1k, 3f), brown with distinctive pattern; with long knob-shaped apophysis on top. Dorsal view (Fig. 3g), with wavy sclerotized arch anteriorly and pair of long and narrow pore plates.

*Distribution.* Known from the type locality only (Fig. 5).

*Etymology.* Named for Mr. Jiuwei Bian, the collector of the type material.

Huber, B. A. 2011. Revision and cladistic analysis of *Pholcus* and closely related taxa (Araneae, Pholcidae). Bonner zool. Monographien 58: 1-510.

p. 462

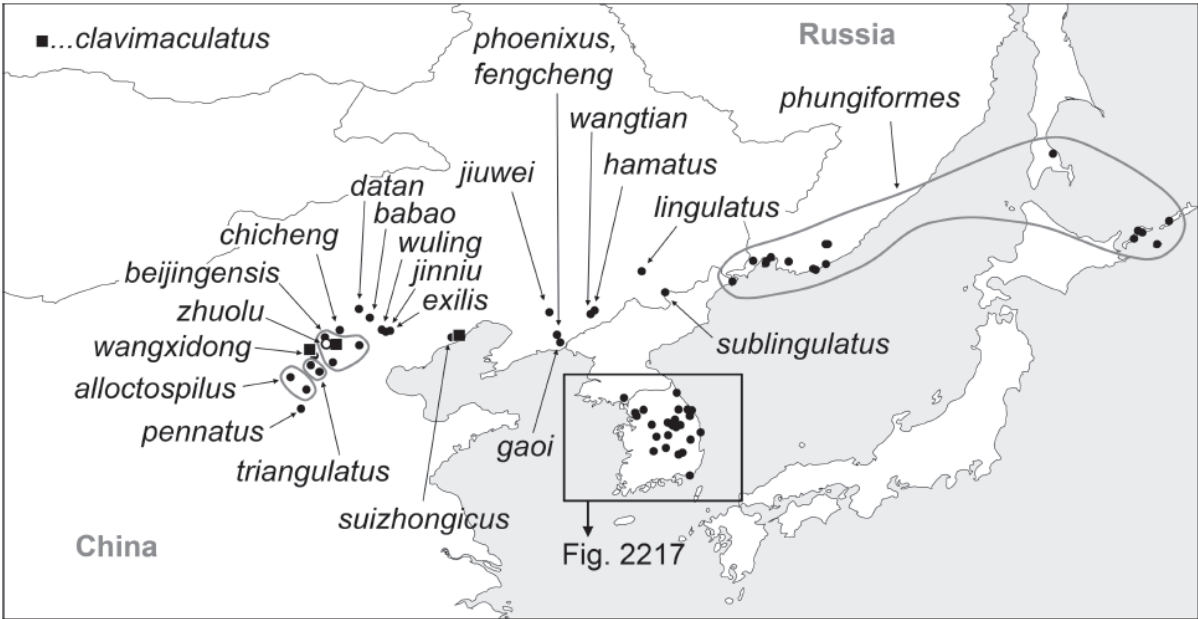


FIG. 2216. Known distribution of the *Pholcus phungiformes* species group. For Korean species, see Fig. 2217.