

Pholcus jixianensis Zhu & Yu, 1983

Zhu, C., Mao, J., Yu, Z. 1983. Two new species of spiders of the genus *Pholcus* from China (Araneae: Pholcidae). J. Bethune Med. Univ. 9: 135-137.

p. 136

蓟幽灵蛛 *Pholcus jixianensis* Zhu et. Yu, 新种

雌蛛体长 5.3 毫米，头胸部背面淡灰色，背甲中央有两个对称的黑色花斑，头部隆起。8 眼均位于眼丘上，除前中眼外，其他 6 眼组成两个三角形，中眼区梯形，宽大于长，前边小于后边，从背面观察，前眼列后凹，后眼列略后凹；前中眼间距小于前中侧眼间距，后中眼间距甚大于后中侧眼间距。螯肢后齿堤 1 齿。胸板灰黑色，前端中央有一淡色斑，两侧亦各有 3 个淡色斑。步足黑灰色，有深色环状纹，足式：I、II、IV、III。腹部长椭圆形，淡灰色，背面中央有一纵斑，纵斑两侧各有 5 个对称的黑斑，后面的一对长椭圆形。外雌器较为特殊。

雌蛛测量如下（单位：毫米）：背甲长 1.8，宽 1.8；腹部长 3.5，宽 1.45。

	腿节	膝、胫节	后附节	附节	总计
触肢 I	0.37	0.32	0.39	0.39	1.08
II	7.50	9.10	12.50	2.20	31.30
III	6.40	6.20	8.50	1.50	22.60
IV	5.10	4.31	5.55	1.20	16.16
V	6.50	6.10	8.10	1.20	21.90

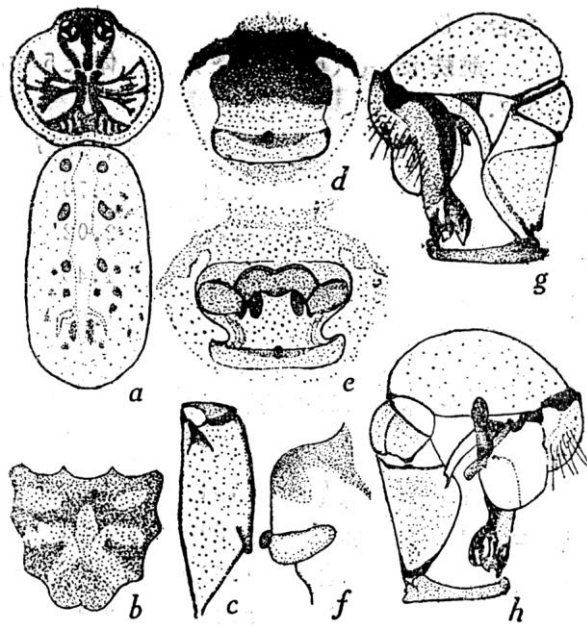
雄蛛体长约 5 毫米，体形似雌蛛。额的中部靠近前面有黑色的三角形突起。螯肢除后齿堤有 1 齿外，背面离体端靠近内缘有 1 大齿，齿尖斜向螯爪。触肢的转节有先端弯曲的长距。

雄蛛测量如下（单位：毫米）：背甲长 1.6，宽 1.6；腹部长 3.4，宽 1.6。

	腿节	膝、胫节	后附节	附节	总计
I	9.40	12.50	16.50	2.50	40.90
II	8.70	8.40	10.50	2.20	29.80
III	7.00	6.50	8.60	1.50	23.60
IV	8.90	8.20	10.50	1.50	29.10

正模：♀，配模 ♂，1982.VII.30，采于天津市蓟县联合村山区水边石下，82—001，于志宣。模式标本保存于白求恩医科大学生物教研室。

副模：♀♀ 3 ♂♂ 4，时间、地点同正模，保存于天津市植保站。



蓟幽灵蛛 *Pholcus jixianensis*

- a. 雌蛛背面观
- b. 胸板花纹
- c. 螯肢前面观
- d. 外雌器外面观
- e. 外雌器内面观
- f. 外雌器侧面观
- g. 触肢器官内面观
- h. 触肢器官外面观

Song, D., Zhu, M., Chen, J. 1999. The Spiders of China. Hebei Science and Technology Publishing House. 640 pp., 4 plates.

***Pholcus jixianensis* Zhu et Yu, 1983**

Pholcus jixianensis Zhu et Yu, in: Zhu, Mao & Yu, 1983: 136, f. 2.

Distribution: Tianjin (Jixian County).

Zhang, F., Zhu, M.S. 2009. A review of the genus *Pholcus* (Araneae: Pholcidae) from China. *Zootaxa* 2037: 1-114.

p. 41

***Pholcus jixianensis* Zhu & Yu, 1983**

(Fig. 19)

Pholcus jixianensis Zhu & Yu, 1983, in Zhu, Mao & Yu 1983: 136, f. 2a–h.

Diagnosis. Similar to *P. suizhongicus*, but can be distinguished from it by the shape of the tip of the procurus (Figs. 19E–F), by the short thumb-shaped appendix (Fig. 19E); and by the longer ventral apophysis of the trochanter (Fig. 19C).

Redescription. Male: A specimen measured ('allotype', data copied from Zhu, Mao and Yu 1983), total length 5.0: cephalothorax 1.6 long, 1.6 wide; abdomen 3.4 long, 1.6 wide. Leg I: 40.9 (9.4+12.5+16.5+2.5). Carapace short, broad and almost circular, ochre, with brown mark broadly connecting to ocular area. Cephalic region raised, with brown central marks, ocular area dark yellow. Clypeus slightly ochre, with yellow marks. Chelicerae with pair of black apophyses distally and pair of unsclerotized rounded apophyses proximolaterally. Labium and endites yellow. Sternum slightly ochre, with some regular yellow marks on it. Femora, patellae and tibiae ochre, with dark rings, metatarsi and tarsi brown. Abdomen cylindrical, pale ochre, dorsum with pairs of brown spots on it. Venter pale brown, without marks. Palps as in Figs. 19E and 19F, bulb with ear-shaped unculus and a small thumb-shaped appendix. Procurus as in Fig. 19D.

Female: in general very similar to male. A specimen measured (holotype, data copied from Zhu, Mao and Yu 1983), total length 5.3: cephalothorax 1.8 long, 1.8 wide; abdomen 3.5 long, 1.45 wide. Epigynum roughly rectangular as in Fig. 19A, with a small knob-shaped apophysis centrally. Dorsal view as in Fig. 19B, with a door-like sclerotized arch anteriorly and a pair of pine-cone pore plates.

Distribution. Known from type locality only.

Material. Types. Female holotype, male 'allotype' (labeled 82001), collected under a stone near the river, Lianhe Village, Ji County, Tianjin Municipality, China, July 30, 1982, leg. Z. X. Yu (BMU); 4♂, 3♀ paratypes, same data as holotype (TPPS).

Material examined. CHINA: **Tianjin:** Ji County, July 30, 1982, leg. Z. X. Yu, only right palp of male and epigynum (from female holotype and male 'allotype').

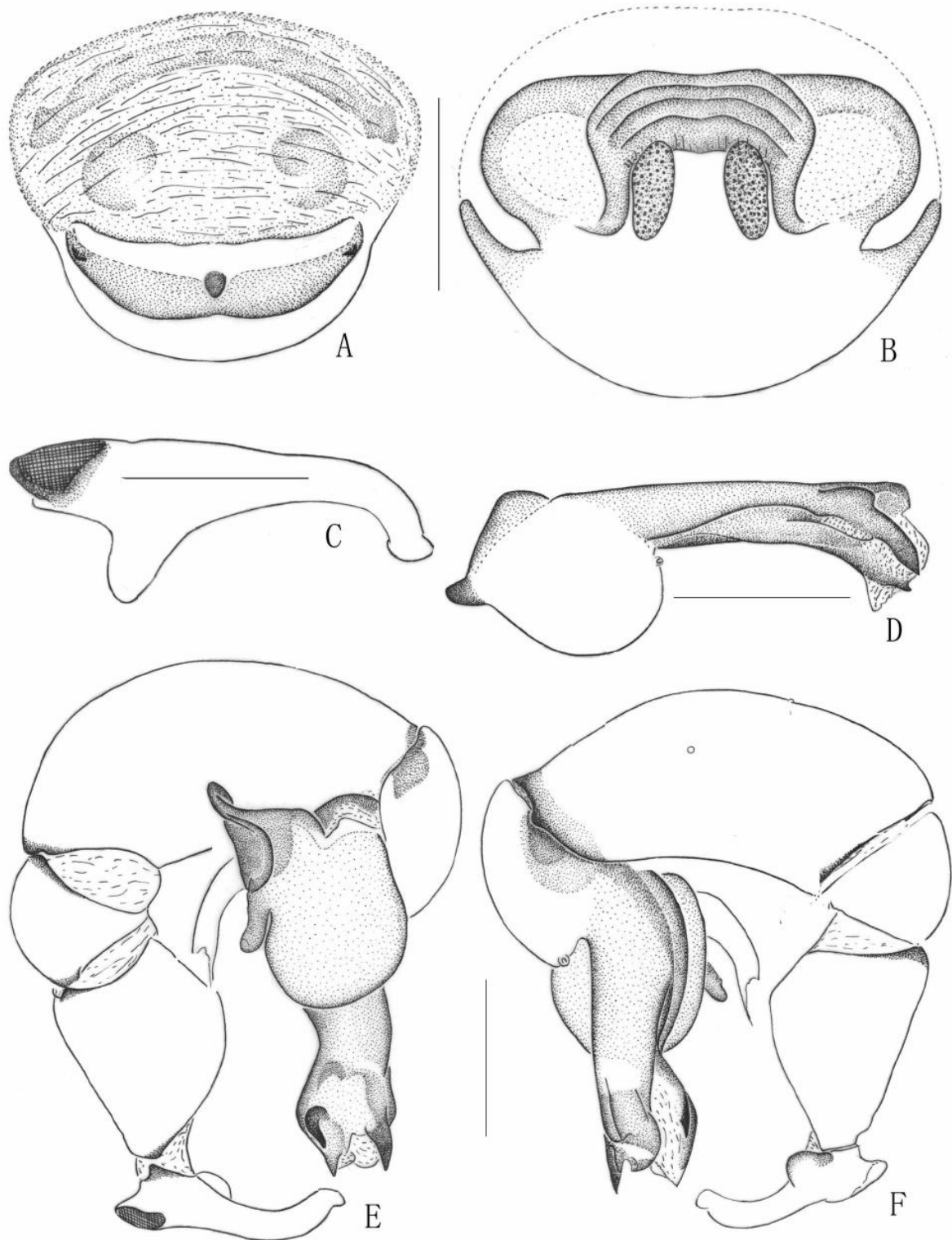


FIGURE 19. *Pholcus jixianensis* Zhu & Yu, 1983. A. epigynum, ventral view. B. same, dorsal view. C. trochanter of male left palp, dorsal view. D. left procurus, dorsal view. E. left palp, prolateral view. F. same, retrolateral view. Scale lines: 0.5mm (A-F).

Huber, B. A. 2011. Revision and cladistic analysis of *Pholcus* and closely related taxa (Araneae, Pholcidae). Bonner zool. Monographien 58: 1-510.

p. 456

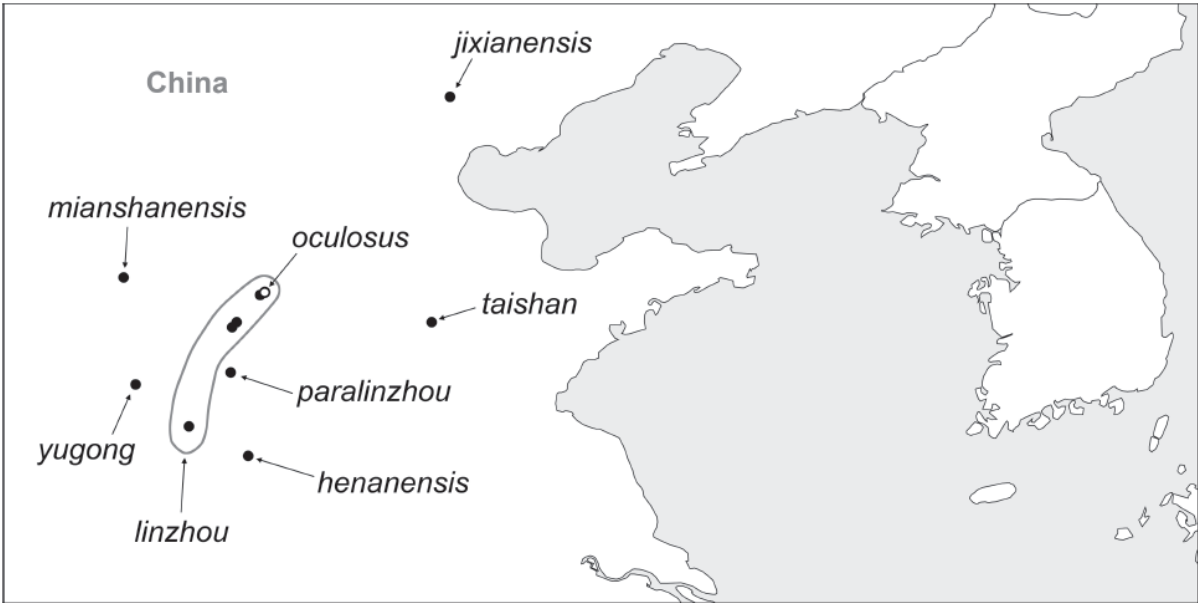


FIG. 2200. Known distribution of the *Pholcus taishan* species group.