

***Pholcus jorengensis* Seo, 2004**

Seo, B. K. 2004. A new species of *Pholcus* (Araneae: Pholcidae) from Korea. Korean J. syst. Zool. 20: 73-77.

p. 74

****Pholcus jorengensis* sp. nov. (Fig. 1)**

Material examined. Holotype: Male, Mungyeongseje (Gyeongsangbuk-do), 16 Jul. 1999. Paratype: 9 females, 3 males, Mt. Weolak, 14 Aug. 2000; 1 female, Mungyeongseje, 26 Oct. 1999; 4 females, Mungyeongseje, 14 Aug. 2000; 5 females, 1 male, Mt. Sobaek, 15 Aug. 2000. All type specimens are deposited in the collection of Department of Biology, Keimyung University.

Male (holotype). Carapace yellow except for dark brown pattern connecting anterior median eyes, lateral and posterior sides from a linear median furrow; wider than length with index 105; cervical groove distinct and median furrow linear. Cephalic region remarkably raised; cephalic width index 29. Clypeus height about 5.8 times of diameter of anterior median eyes. Eye row index 93. Eye area index 125. Eye ratio, anterior lateral eye = posterior lateral eye > posterior median eye > anterior median eye (5 : 4.5 : 3). Anterior median eyes separated by a third of their diameter, by a third of their radius from laterals. Posterior median eyes about 1.3 times of their diameter apart. Anterior and posterior lateral eye and posterior median eye contiguous. Anterior and posterior median eyes separated by diameter of anterior median eyes. Median ocular quadrangle, posterior side > height > anterior side (14 : 10.5 : 7.5).

Chelicerae yellow; beak shape at tip; in the frontal view, a prominence at distal part and two at proximal part (Fig. 1D). Sternum yellow with dark brown margin, fused with labium; index 121.

Legs yellow, long and slender; furnished with hairs only. Leg formula 1243. Leg formular index 100: 69: 46: 61. Leg I/c 29.90. Fem. I/c 7.51. Tib I/c 7.49. Met I/c 13.03. Met. I/tib. I 1.74. Met. IV/tib. IV 1.59. Pat. I+tib. I/c 7.92.

Abdomen cylindrical in index 40; dorsum yellow with brown dots.

Palpal organ (Fig. 1A-C, E-F); trochanter spur of sharp tip; procurus right angle shape in retrolateral view, with blade tip in dorsal view; embolus narrow, and slightly longer than genital bulb, with round uncus.

Female (paratype). Carapace wider than length with index 95. Cephalic width index 38. Clypeus height 6 times of diameter of anterior median eyes. Eye row index 91. Eye area index 106. Eye ratio, anterior lateral eye > posterior lateral eye > posterior median eye > anterior median eye (5 : 4.5 : 4 : 3). Anterior median eyes separated by a third of their diameter, by a third of their radius from laterals. Posterior median eyes about 1.6 times of their diameter apart. Anterior and posterior lateral eye and posterior median eye contiguous. Anterior and posterior median eyes separated by

*새재유령거미 (신칭)

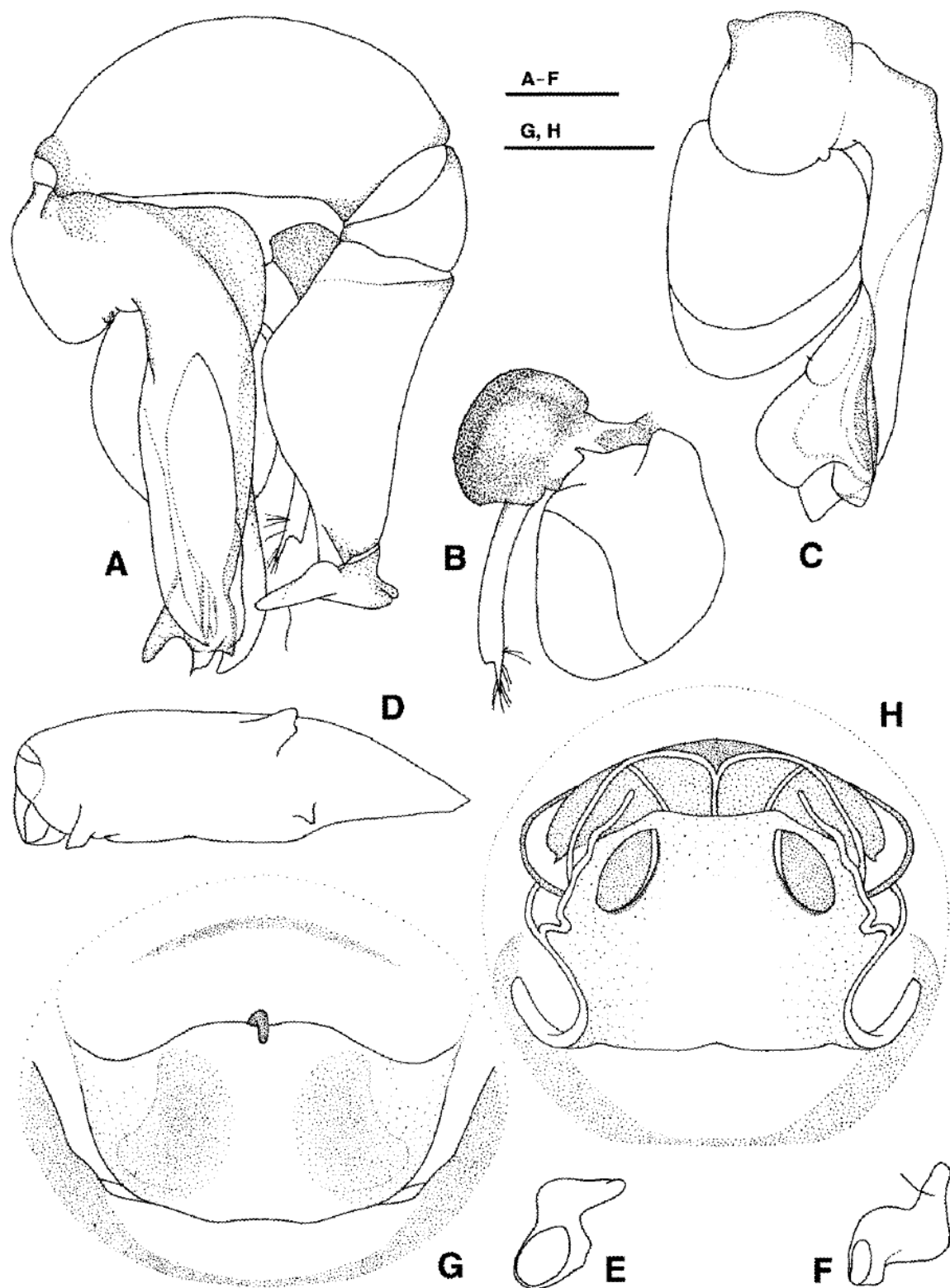


Fig. 1. *Pholcus joreongensis* sp. nov. A, left palpal organ, retrolateral view; B, uncus, genital bulb and embolus, prolateral view; C, genital bulb, cymbium and procursus, dorsal view; D, right chelicera, frontal view; E, left trochanter, dorsal view; F, left trochanter, ventral view; G, epigynum; H, internal genitalia, dorsal view. Scale bars = 0.35 mm.

diameter of anterior median eyes. Median ocular quadrangle, posterior side > height > anterior side (13.5 : 9 : 7).

Sternum index 133. Leg formula 1243. Leg formular index 100: 70: 52: 70. Leg I/c 20.20. Fem. I/c 5.13. Tib I/c 5.13. Met I/c 8.20. Met. I/tib. I 1.60. Met. IV/tib. IV 1.49. Pat. I+tib. I/c 5.52.

Abdomen index 56. Chitinized epigynum with a pair of large concave plates and a tongue; internal genitalia with a pair of small pore plates (Fig. 1G-H).

Measurements (mm). Male (holotype)/Female (paratype): Body length 5.90/5.90; carapace length 1.85/1.76, width 1.94/1.67; cephalic width 0.56/0.63; sternum length 0.91/0.84, width 1.10/1.12; anterior eye row 0.65/0.61; posterior eye row 0.70/0.67; abdomen length 3.96/3.92, width 1.58/2.20.

Leg I 55.30/35.55 (13.90/9.20, 0.79/0.70, 13.86/9.02, 24.11/14.43, 2.64/2.38), II 37.92/25.03 (10.38/6.95, 0.79/0.70, 9.37/6.29, 15.71/9.55, 1.67/1.54), III 25.47/18.53 (7.17/5.41, 0.70/0.62, 6.34/4.49, 10.03/6.82, 1.23/1.19), IV 33.65/24.95 (9.50/7.30, 0.70/0.66, 8.45/6.25, 13.46/9.33, 1.54/1.41). Palp 4.13/1.38 (0.88/0.44, 0.44/0.19, 1.23/0.26, 1.58/0.49).

Male (variation based on 5 specimens)/Female (variation based on 10 specimens): Body length 5.54-6.07/5.10-5.98; carapace length 1.72-1.85/1.63-1.85, width 1.72-1.94/1.58-1.76; cephalic width 0.56-0.66/0.62-0.66; sternum length 0.88-0.97/0.84-0.88, width 1.06-1.23/1.06-1.14; anterior eye row 0.65-0.70/0.60-0.65; posterior eye row 0.70-0.77/0.65-0.70; abdomen length 3.61-4.93/3.34-4.14, width 1.41-2.20/1.32-2.55.

Leg I 44.31-55.30/35.07-39.42 (11.04-13.90/8.58-10.12, 0.75-0.79/0.62-0.75, 11.34-13.86/8.67-10.03, 18.74-24.11/14.43-16.46, 2.38-2.77/1.76-2.46), II 30.58-37.92/23.67-27.54 (8.23-10.38/6.34-7.66, 0.62-0.79/0.62-0.70, 7.83-9.37/5.94-6.91, 12.23-15.71/8.98-10.91, 1.58-1.80/1.50-1.67), III 21.65-25.47/17.73-20.02 (6.07-7.30/5.10-5.68, 0.62-0.70/0.62-0.66, 5.46-6.34/4.36-5.02, 8.32-10.03/6.56-7.66, 1.14-1.32/1.10-1.45), IV 28.29-33.65/23.54-27.06 (7.92-9.59/6.82-7.83, 0.66-0.70/0.57-0.70, 7.26-8.45/5.90-6.86, 11.00-13.46/8.80-10.34, 1.45-1.58/1.23-1.50). Palp 4.05-4.31/1.19-1.14 (0.88-0.92/0.35-0.53, 0.35-0.48/0.13-0.19, 1.23-1.32/0.26-0.31, 1.50-1.67/0.35-0.49).

Etymology. The specific name, *joreongensis*, is derived from the type locality.

Remarks. *Pholcus acutulus* Paik, 1978, *P. clavimaculatus* Zhu and Song, 1999 (see Song, Zhu and Chen, 1999), *Pholcus crassus* Paik, 1978, *P. joreongensis* and *Pholcus lingulatus* Gao, Gao and Zhu, 2002 are similar in dorsal patterns of carapace and abdomen, and in the structure of male palpal organ. Among them new species, *P. joreongensis*, shows closely similarity to *P. clavimaculatus* in shape of unculus and embolus of male palpal organ. But it is distinguished from the latter by size of unculus and length of embolus, shape of procurus and trochanter spur, and lengths of 3rd and 4th leg. It is remarkable that lengths of Fem I and Tib I of the present species are same in both sexes. *Pholcus sokkrisanensis* Paik, 1978 which is obviously different from the new species in the male palpal organ lives in the locality of type series, Mt. Sobaek, Mt Weolak and Mungyeonseje.

Huber, B. A. 2011. Revision and cladistic analysis of *Pholcus* and closely related taxa (Araneae, Pholcidae). Bonner zool. Monographien 58: 1-510.

p. 462

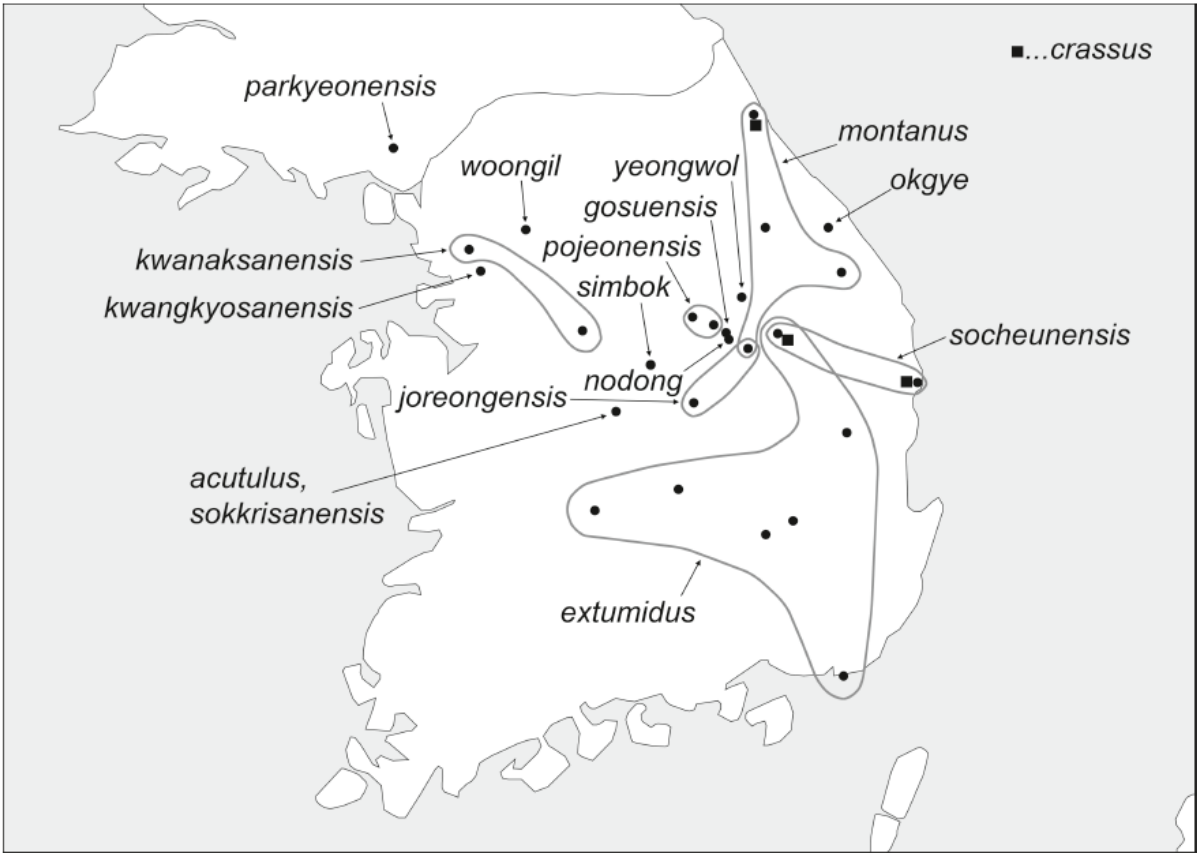


FIG. 2217. Known distribution of Korean representatives of the *Pholcus phungiformes* species group.