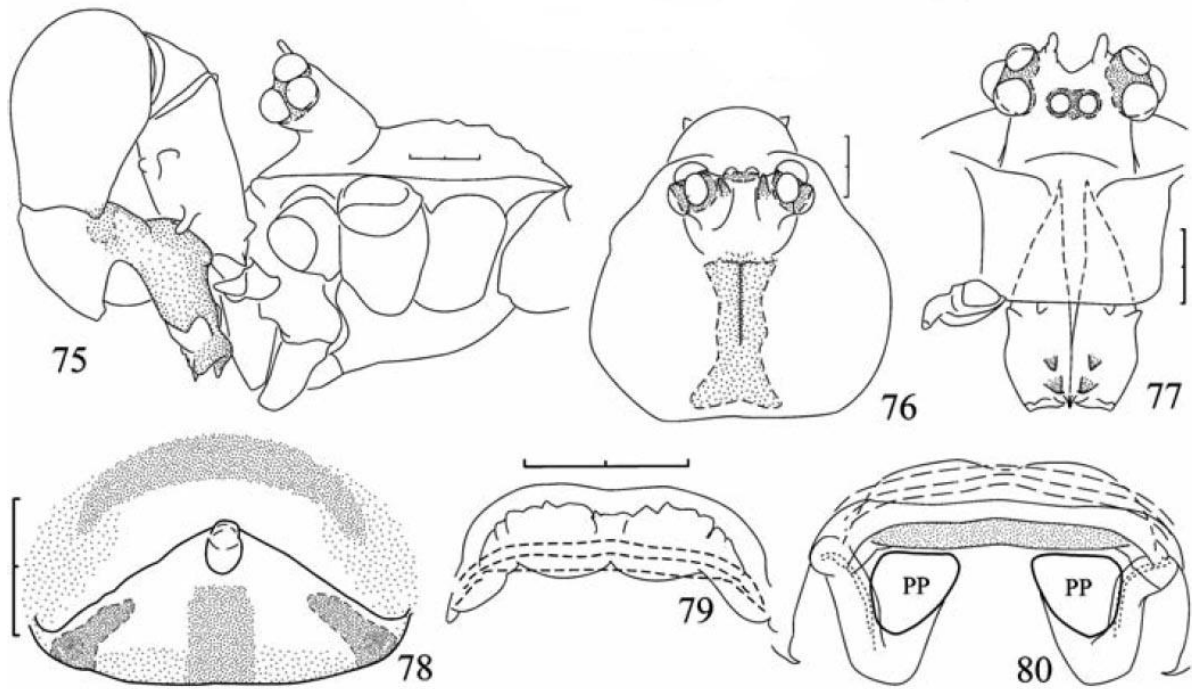


***Pholcus kandahar* Senglet, 2008**

Senglet, A. 2008. New species of *Pholcus* and *Spermophora* (Pholcidae, Araneae) from Iran and Afghanistan, with notes on mating mechanisms. *Rev. suisse Zool.* 115: 355-376.

p. 367



(75-80)

Pholcus kandahar sp. n. (75) Male prosoma, left view. (76) Same, dorsal view. (77) Same, anterior view. (78) Genital plate. (79) Vulva, ventral view. (80) Same, dorsal view. PP = pore-plate. Scale 0.2 mm.

Pholcus kandahar sp. n.

Figs 75-87

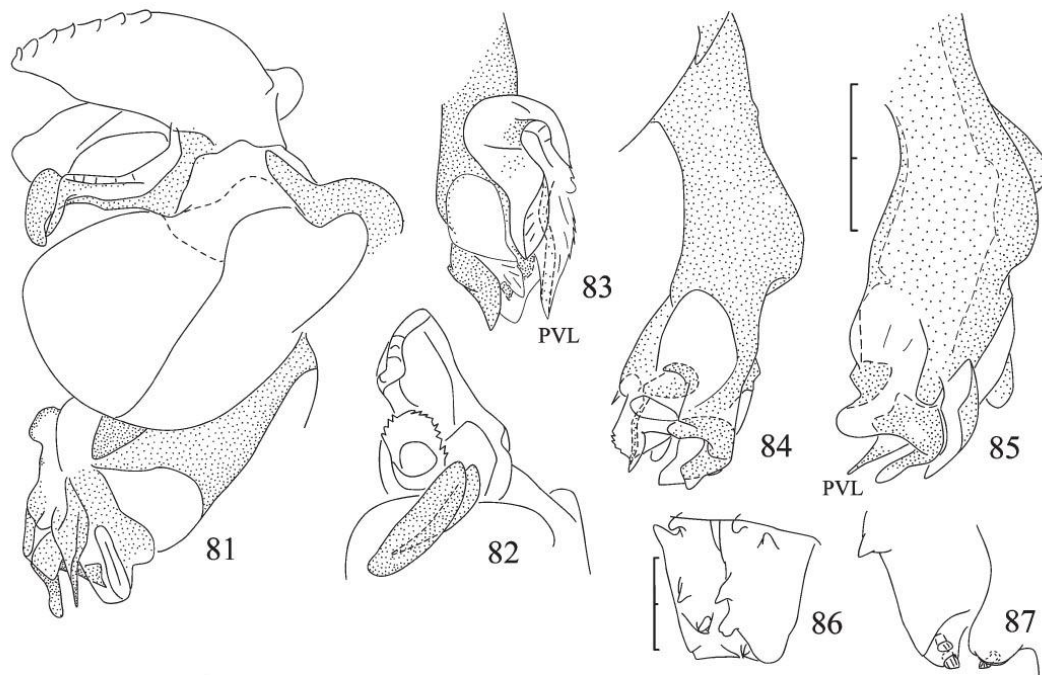
MATERIAL EXAMINED: Holotype ♂, AFGHANISTAN, West of Kandahar, 31°37'N 65°36'E, 31/7/1975. – Paratypes, 5 ♂, 4 ♀, same locality as holotype. All specimens were collected from a stone wall.

DESCRIPTION: Prosoma marking (Fig. 76) narrow median dorsal band widened at both ends. Opisthosoma elongated.

Male (paratype): Total length 3.40. Prosoma 0.96 long, 1.02 wide. Eye sizes and interdistances: AME 0.045, PME 0.093; PME-PME 0.21, PME-ALE 0.01. Ocular group 0.44 wide. Eye tubercle (Figs 75-77) carrying horns. Chelicera (Figs 86-87) with an additional median apophysis situated closer to the prolateral-apical apophysis (with two gripping teeth) than to the basal anterior blunt hook. Pedipalp (Figs 75, 81-85): Femur (Fig. 75) bearing a strong ventral bump and a finger-like apophysis; trochanter apophysis shorter than mid-width of femur. Procursus: Tip of large apical sclerite (Figs 83-85) strongly flattened into a thin ribbon (in *P. djelalabad* sp. n. with a cone-shaped tip); long prolateral ventral lamina (PVL) visible in retrolateral view. Bulbal apophyses (Figs 81-82): Width of appendix about a third of its length in apical view; long retrolateral expansion almost reaching tip of appendix head.

Female: Total length 4.30. Prosoma 1.00 long, 1.15 wide. Eye sizes and interdistances: AME 0.04, PME 0.10; PME-PME 0.30, PME-ALE 0.01. Ocular group 0.41 wide. Genital plate triangular (Fig. 78), with flexed tubercle apophysis. Vulva (Figs 79-80): Ventral sclerite simple; dorsal sclerite narrow.

ETYMOLOGY: The species name, a noun in apposition, refers to the type locality.



(81-87) *Pholcus kandahar* sp. n., left male palp. (81) Procursus and bulbus, prolateral view. (82) Bulbal apophyses, ventral view. (83) Procursus, ventral view. (84) Same, dorsal view. (85) Same, retrolateral view. (86) Chelicerae. (87) Same, apical apophyses.

PP = pore-plate. PVL = prolateral ventral lamina.

Scales 0.2 mm.

Huber, B. A. 2011. Revision and cladistic analysis of *Pholcus* and closely related taxa (Araneae, Pholcidae). Bonner zool. Monographien 58: 1-510.

p. 408

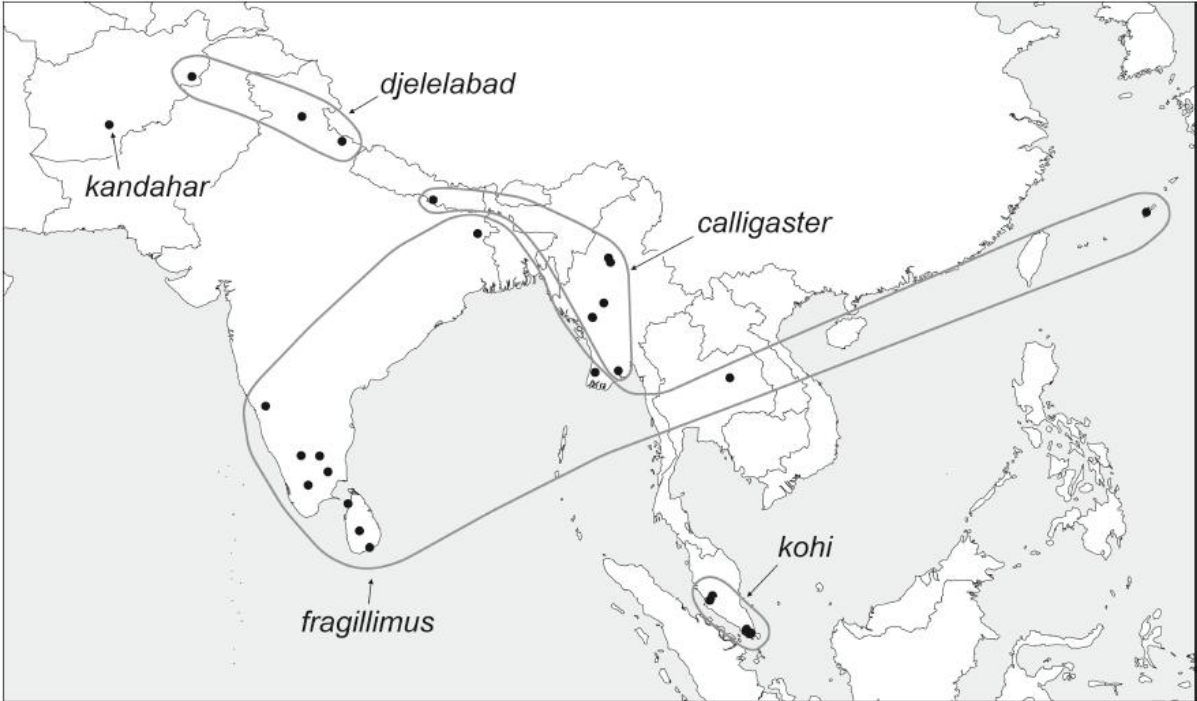


FIG. 1979. Known distribution of the *Pholcus calligaster* species group.