

***Pholcus kangding* Zhang & Zhu, 2009**

Zhang, F., Zhu, M.S. 2009. A review of the genus *Pholcus* (Araneae: Pholcidae) from China. *Zootaxa* 2037: 1-114.

p. 43

***Pholcus kangding* sp. nov.**

(Fig. 20)

Types. Male holotype, 5♂, 6♀ paratypes, CHINA: Sichuan Province, Kangding County [30°N, 101°54'E], July 16, 2000, leg. M. S. Zhu, F. Zhang and J. X. Zhang (MHBU).

Diagnosis. Among its close *Pholcus* relatives (see the remark of *P. clavatus*), this species is very similar to *P. zhangae* sp. nov. in the shapes of the palpal bulb, both with branched appendices of palpal bulb (Figs. 20H and 63I). *P. kangding* sp. nov. can be distinguished from the latter by the shape of the procurus (Figs. 20G–I), by the smaller club-shaped epigynal apophysis (Fig. 20A), and by the cephalic region without brown slender central marks (Fig. 20C).

Etymology. The species name refers to the type locality. It is a noun in apposition.

Description. Male (holotype): total body length 4.2: cephalothorax 1.3 long, 1.5 wide; abdomen 2.9 long, 1.6 wide. Leg I: 41.7 (10.8+0.7+10.2+17.5+2.5), tibia II: 6.7, tibia III: 4.2, tibia IV: 5.4; tibia I L/D: 64. Prosoma shape as in Fig. 20C. Carapace short, broad and almost circular, ochre, with pair of brown mark broadly connecting to ocular area. Cephalic region raised, without brown central marks, ocular area dark yellow. Clypeus 0.46, dark ochre, without marks. Distance AME–AME 0.06. Diameter AME 0.09, ALE 0.14, PME 0.12, PLE 0.13. Chelicerae as in Fig. 20E, with pair of black apophyses distally, pair of unsclerotized nipple-like apophyses proximolaterally and pair of small unsclerotized rounded apophyses proximocentrally. Labium light yellow. Endites slightly gray. Sternum dark gray, with irregular yellow patches centrally and laterally as in Fig. 20F. Femora, patellae and tibiae ochre, with dark rings, metatarsi and tarsi brown. Abdomen cylindrical, pale ochre, dorsum with small brown patterns as in Fig. 20C. Venter pale brown. Palps as in Figs. 20H and 20I, bulb with fan-like unculus, appendix with a median branch. Procurus as in Fig. 20G. Tarsal organ capsulate.

Variation. Tibia I in five other males: 9.4–10.0 (mean: 9.7). Body length in five other males 4.0–4.2.

Female: in general very similar to male. Total length of bodies 4.1–4.7. A specimen measured (paratype), total length 4.7: cephalothorax 1.2 long, 1.3 wide; abdomen 3.5 long, 1.8 wide. Tibia I: 6.5. Distance AME–AME 0.05. Diameter AME 0.08, ALE 0.13, PME 0.11, PLE 0.12. Epigynum roughly oval as in Fig. 20A, with a bottle-cork-shaped apophysis on the top. Dorsal view as in Fig. 20B, with M-shaped sclerotized arch anteriorly and a pair of oval pore plates.

Distribution. Known from type locality only.

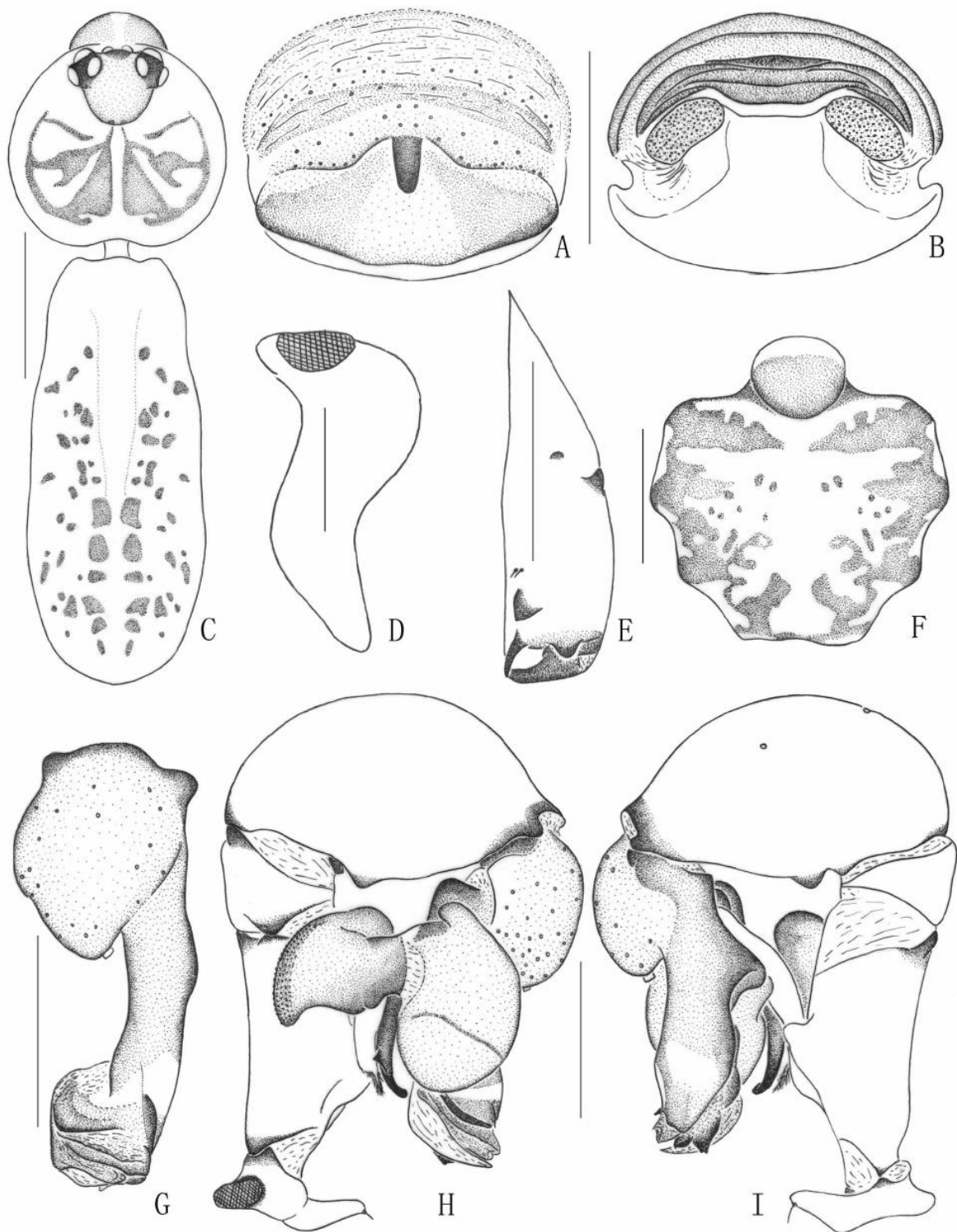


FIGURE 20. *Pholcus kangding* sp. nov. A. epigynum, ventral view. B. same, dorsal view. C. male body, dorsal view. D. trochanter of male left palp, dorsal view. E. male left chelicera, frontal view. F. male sternum, ventral view. G. left procursus, dorsal view. H. left palp, prolateral view. I. same, retrolateral view. Scale lines: 1.0mm (C), 0.5mm (A, B, E–I), 0.2mm (D).

Tong, Y., Li, S. 2010. Eight new spider species of the genus *Pholcus* (Araneae, Pholcidae) from China. *Zootaxa* 2355: 35-55.

p. 47

Pholcus kangding Zhang & Zhu, 2009

Figs 2G-I, 10A-F

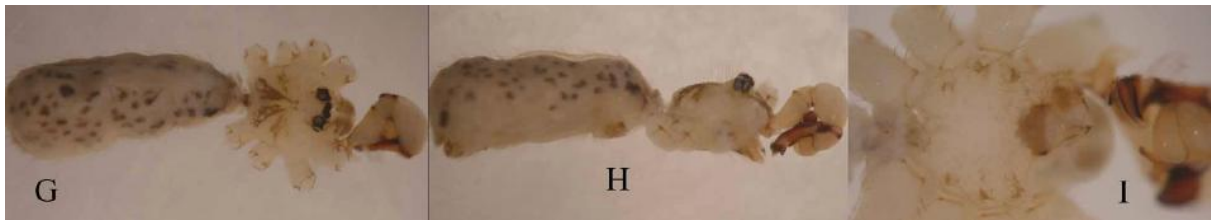
Pholcus kangding Zhang & Zhu, 2009: 43, fig. 20A-I.

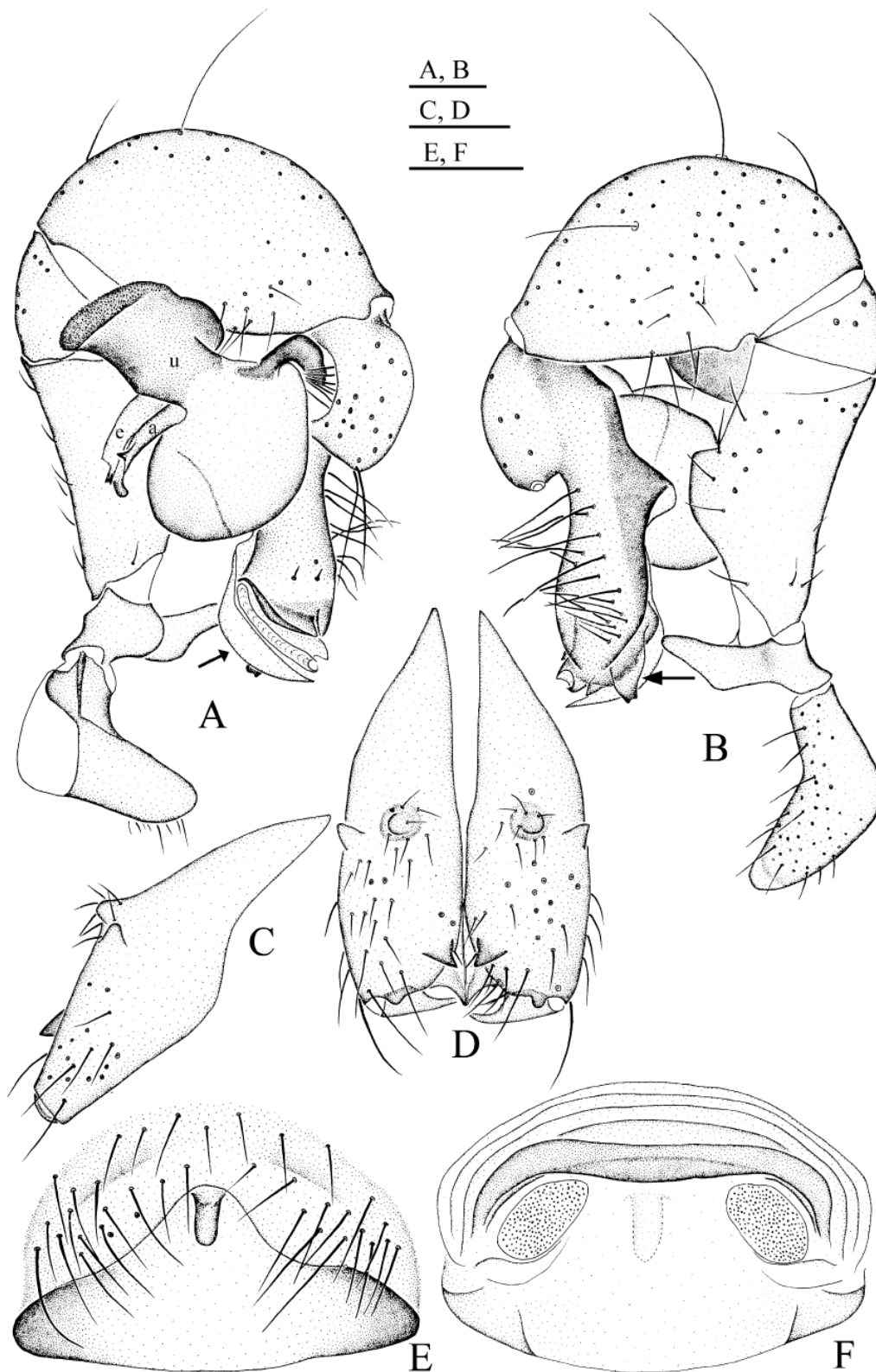
Material examined: 1 male, 1 female, CHINA: Sichuan Province, Kangding County, Paoma Hill (30°02.628'N, 101°57.924'E), 12 October 2005, X. Xu & X. Zhang Leg.

Remarks: This species has been well described by Zhang & Zhu (2009).

Distribution: Sichuan (type locality: Kangding County).

p. 39





FIGURES 10A–F. *Pholcus kangding* Zhang & Zhu, 2009. A–B. Male left palp, prolateral (A) and retrolateral (B) views (arrow in figure B shows the membrane with two denticles distally); C–D. Male chelicerae, lateral (C) and frontal (D) views; E. Female genitalia, ventral view; F. Cleared female genitalia, dorsal view. Scale lines: 0.2 mm.

Huber, B. A. 2011. Revision and cladistic analysis of *Pholcus* and closely related taxa (Araneae, Pholcidae). Bonner zool. Monographien 58: 1-510.

p. 448

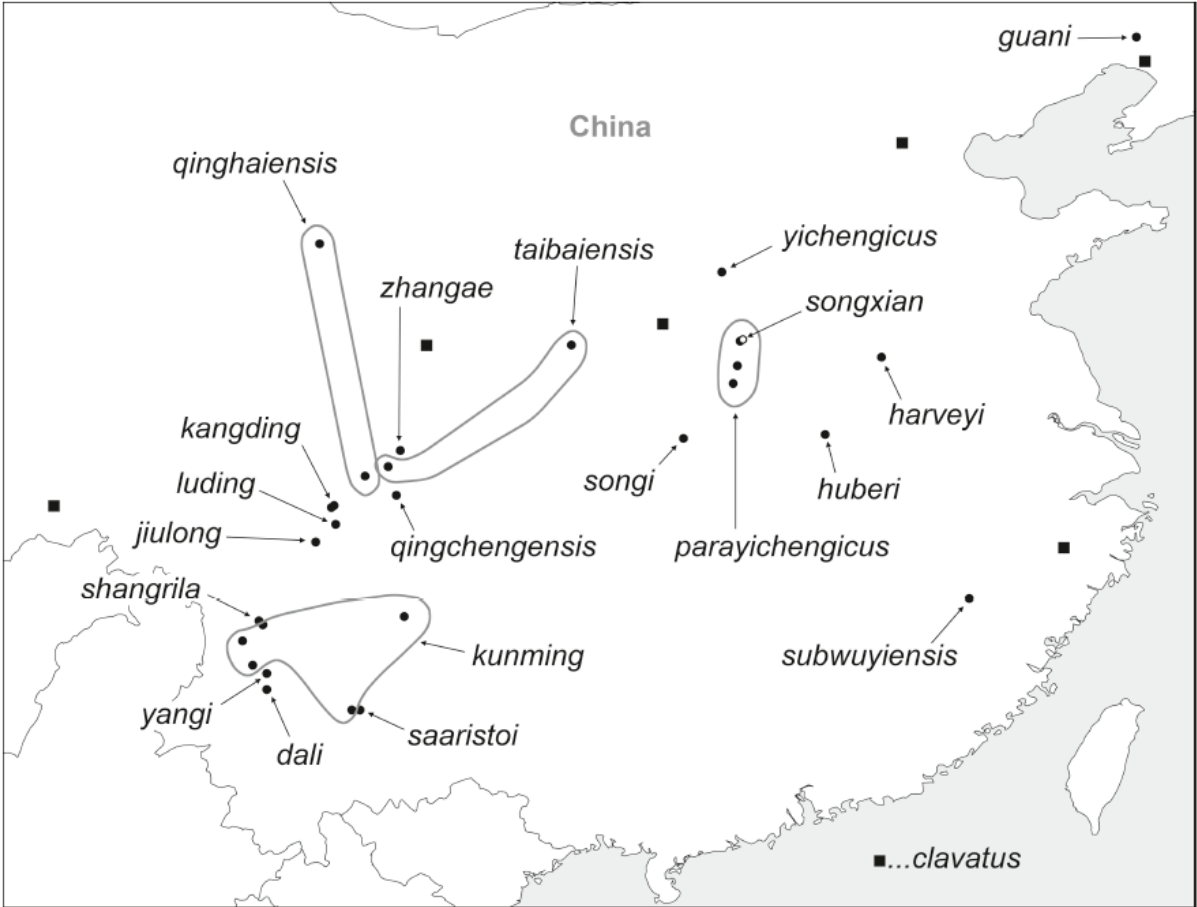


FIG. 2171. Known distribution of the *Pholcus yichengicus* species group.