

***Pholcus kapuri* Tikader, 1977**

Tikader, B. K. 1977. Studies on spider fauna of Andaman and Nicobar Islands, Indian Ocean. Rec. zool. Surv. India 72: 153-212.

p. 165

9. *Pholcus kapuri* sp. nov.*

General— Cephalothorax, abdomen and legs light greenish. Total length 6.20. mm. Carapace 1.50 mm. long, 1.40 mm. wide; abdomen 4.80 mm. long, 1.20 mm. wide.

Cephalothorax—Nearly as long as wide, slightly narrow in front; ocular area slightly high. Middle of cephalothorax provided with a conspicuous broad longitudinal line extending from ocular area to base of cephalothorax, lateral side of cephalothorax also provided with similar brown patch. Anterior median eyes almost continuous and smaller than the other eyes. Anterior and posterior lateral along with posterior median eyes formed a compact group. In the male this group of eyes formed a little stalk-like projection as in text-fig. 3C. Legs thin and very long provided with inconspicuous light brown transverse bands. Sternum nearly as wide as long, narrowing behind, clothed with fine hairs. Male palp as in text fig. 3E & F.

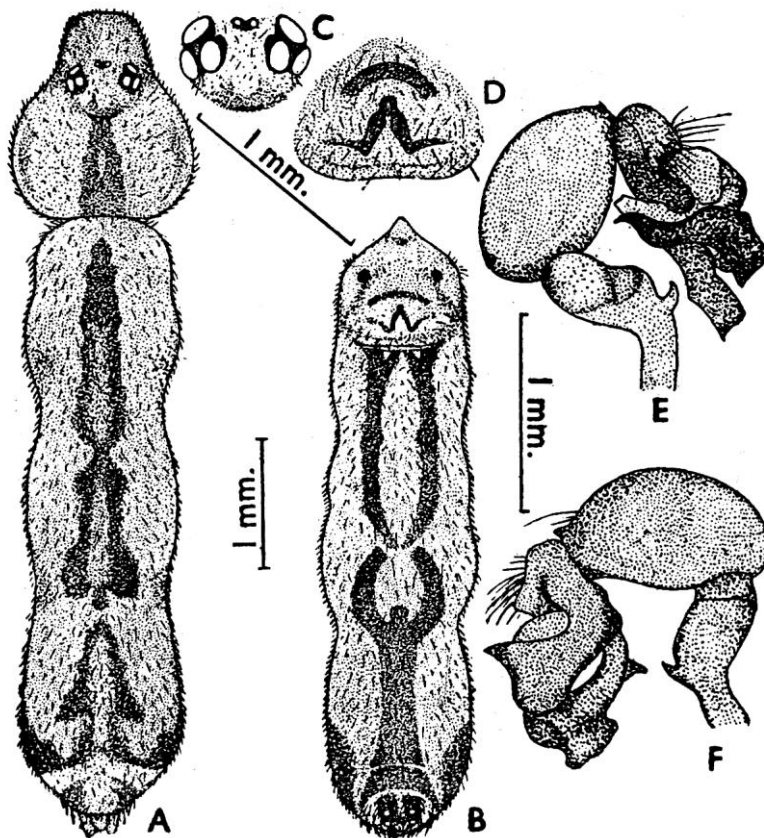
Abdomen— Cylindrical in shape, about ten times as long as wide. Mid-dorsally and mid-ventrally provided with conspicuous longitudinal brownish band as in text-fig. 3A & B. Spinners situated at the end of abdomen. Epigyne very simple as in text fig. 3D.

Type-specimen— *Holotype* one ♀, *paratype* two ♀♀, *allotype* one ♂ in spirit.

Type locality—Neil Island, Reserve forest, Andaman and Nicobar Islands, India, Coll. B. K. Tikader, 11.4.1970. Also collected from Chiria-tapu South Andaman. One female, Coll. B. K. Tikader, 28.5.1971.

This species resembles *Pholcus gracillimus* Thorell but separated as follows: (i) Abdomen mid-dorsally and mid-ventrally provided with a longitudinal brownish-red band but in *P. gracillimus* no such band. (ii) Epigyne and male palp also structurally different.

*It is with much pleasure that I named this species after Dr. A. P. Kapur, an eminent Entomologist and former Director, Zoological Survey of India.



Text fig. 3 *Pholcus kapuri* sp. nov.

- (A) Dorsal view of female, legs omitted, (B) Ventral view of abdomen,
- (C) Eyes of male, (D) Epigyne, (E) Ventral view of male palp,
- (F) Dorsal view of male palp.

Majumder, S. C. & Biswas, B. 1993. Taxonomic studies of some pholcid spiders from India (Araneae: Pholcidae). *Rec. zool. Surv. India* 92(1-4): 1-3.

p. 2

***Pholcus kapuri* Tikader**

1977. *Pholcus kapuri* Tikader, *Rec. zool. Surv. India*, 72 : 165.

Specimen examined : 3 ♀ ♀, 1 ♂, Neil Island, Reserve forest, Andaman and Nicobar Islands, 11.4.1979. coll. B. K. Tikader.

Distribution : Neil Island (Type-locality) Andaman and Nicobar Island.

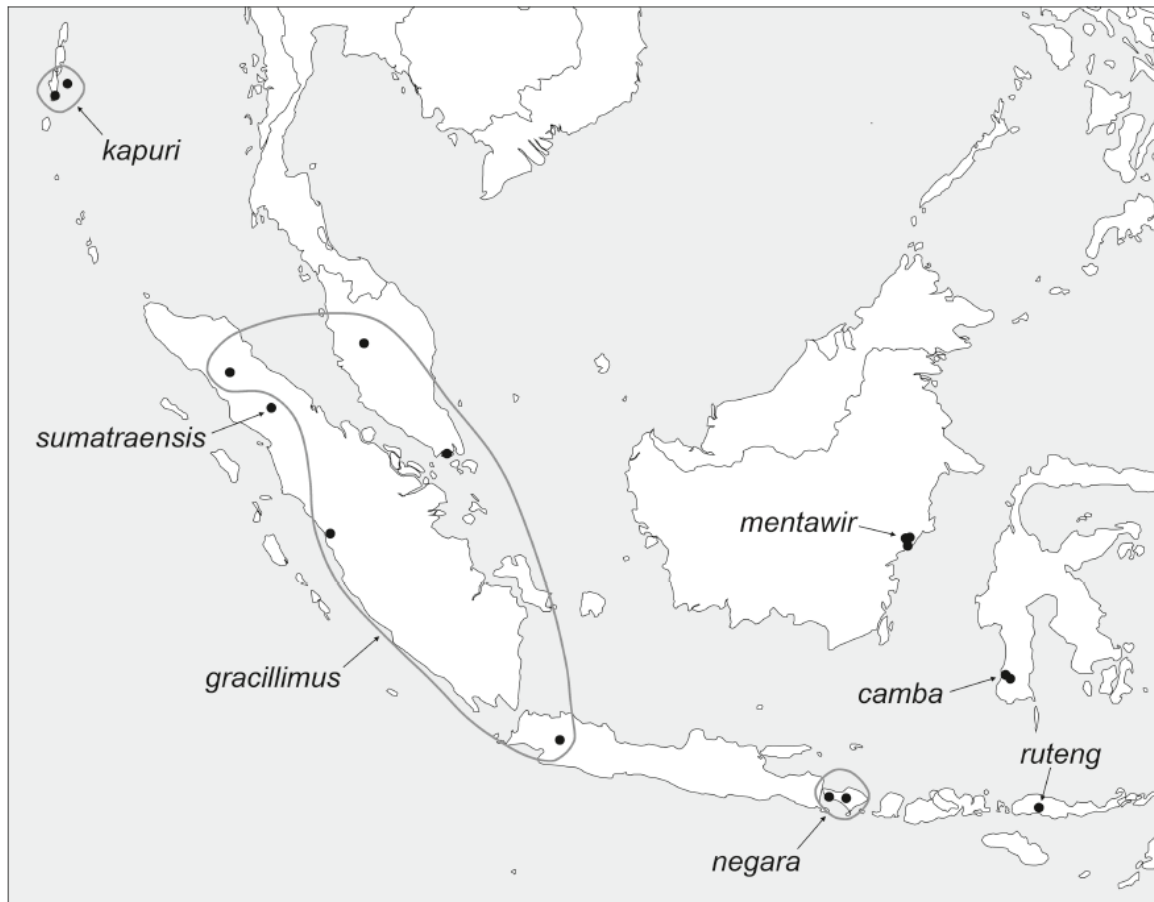


FIG. 1419. Known distribution of the *Pholcus gracillimus* species group.

gracillimus is redescribed. The *Ph. sumatraensis* male holotype cannot be found (J. Wunderlich, pers. comm.). I do not know the depository of the *Ph. kapuri* type material (1♂3♀). Core group: *Ph. gracillimus* Thorell, 1890; *Ph. negara* n. sp.; *Ph. ruteng* n. sp.; *Ph. sumatraensis* Wunderlich, 1995; assigned tentatively: *Ph. kapuri* Tikader, 1977; *Ph. camba* n. sp.; *Ph. mentawir* n. sp. The RMNH has females of possible further undescribed species from Sumba Island and West Timor.

Composition. The *gracillimus* group includes seven species; four of them are newly described below, *Ph.*