

***Pholcus karawari* Huber, 2011**

**Huber, B. A. 2011.** Revision and cladistic analysis of *Pholcus* and closely related taxa (Araneae, Pholcidae). *Bonner zool. Monographien* 58: 1-510.

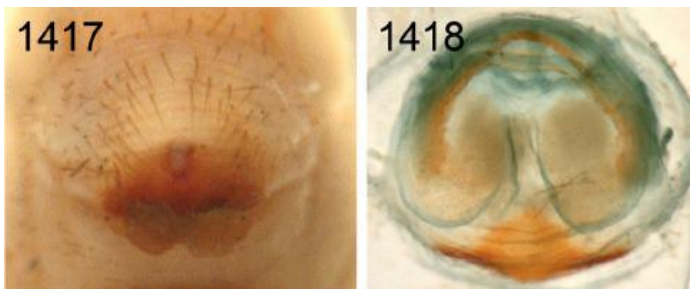
p. 281



1393. *Ph. karawari*, male, dorsal view.

1393. *Ph. kar-*

p. 282



1417, 1418. *Ph. karawari*.

1417,

p. 305

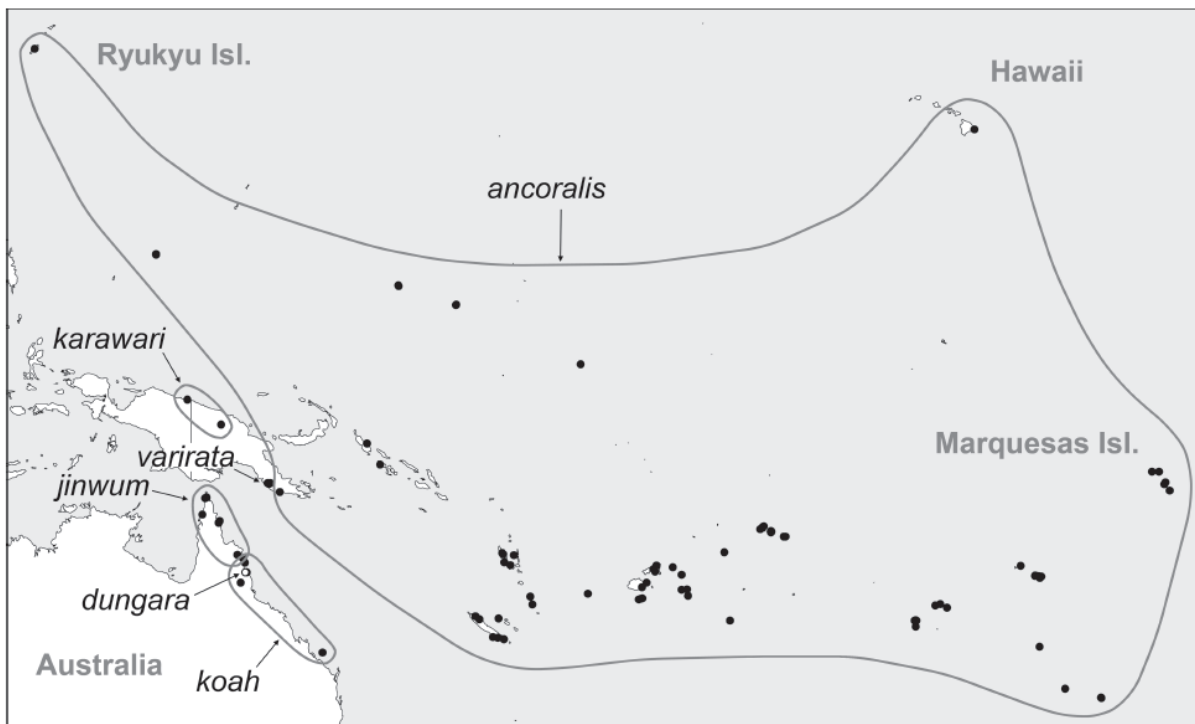


FIG. 1486. Known distribution of the *Pholcus ancoralis* species group.

*Pholcus karawari* n. sp.

Figs. 1393, 1417, 1418, 1504-1508

*Type.* Male holotype from Papua New Guinea, East Sepik Province, Karawari Lodge at Karawari River [4°36.4'S, 143°30.0'E; ~30 m a.s.l.], 8.vii.1986 (D.J. Court), in RMNH.

*Etymology.* The specific name is a noun in apposition, derived from the type locality.

*Diagnosis.* Easily distinguished from most congeners by distinctive pair of horns between male eye triads and strongly bent procurus (Fig. 1505); from similar species (*Ph. ancoralis*, *Ph. varinata*) by details of male palp morphology (Figs. 1504, 1505; trochanter apophysis, femur shape, procurus and bulbal apophyses) and by female genitalia (Figs. 1417, 1507, 1508; shape and position of pore plates).

*Male* (holotype). Total body length 6.5, carapace width 1.3. Leg 1: 50.6 (12.4 + 0.7 + 12.4 + 22.4 + 2.7), tibia 2: 8.0, tibiae 3: 5.1, tibia 4: 7.2; tibia 1 L/d: 93. Habitus as in Fig. 1393. Carapace ochre-yellow with distinct brown pattern similar to *Ph. ancoralis*, clypeus not darkened, sternum brown, legs light brown, tips of femora and tibiae whitish, abdomen ochre-gray with distinctive dorsal and ventral brown pattern similar to *Ph. ancoralis*. Distance PME-PME 175 µm, diameter PME 150 µm, distance PME-ALE 60 µm, distance AME-AME 55 µm, diameter AME 60 µm. Ocular area elevated, very compact, with distinctive pair of horns between triads and very low median hump above AME, hairs on posterior side in higher than usual density but short. No thoracic furrow (only black line anteriorly); clypeus unmodified. Chelicerae with distal apophyses similar to *Ph. ancoralis* but proximally with only one pair of rounded lateral apophyses (Fig. 1506). Sternum wider than long (0.85/0.80), unmodified. Palps as in Figs. 1504 and 1505, coxa unmodified, trochanter with long and pointed retrolatero-ventral apoph-

ysis and smaller dorsal apophysis, femur with large ventral protuberance, procurus strongly curved, pointed distally, with whitish area ventrally and prolateral sclerite, bulb similar to *Ph. ancoralis* but uncus more pointed, embolus only on one side sclerotized, appendix more curved. Legs without spines and curved hairs, few vertical hairs; retrolateral trichobothrium on tibia 1 at 4.5%; prolateral trichobothrium absent on tibia 1, present on other tibiae; tarsal pseudosegments indistinct, only distally a few visible in dissecting microscope.

*Variation.* Tibia 1 in other male from type locality: 13.2. The material from Jayapura is assigned tentatively because males differ slightly: proximal cheliceral apophyses more pointed, uncus with slightly more pronounced process (arrow in Fig. 1504), trochanter apophysis slightly wider and more evenly curved, procurus tip slightly more pointed.

*Female.* No females are available from the type locality and the females described here are with the males that are assigned tentatively due to minor differences (see above). Therefore, these females are also assigned tentatively and may turn out to represent a different species. In general similar to male but ocular area without horns (tiny elevations present; median hump above AME also present); tibia 1 missing in both females. Epigynum strongly elevated, sclerotized plate larger than in *Ph. ancoralis*, anterior folds less distinct (Figs. 1417, 1507); internal view as in Figs. 1418 and 1508.

*Distribution.* Known from Papua New Guinea, East Sepik Province, and from specimens assigned tentatively from Papua Province, Indonesia (Fig. 1486).

*Material examined.* PAPUA NEW GUINEA: *East Sepik Province:* Karawari Lodge: ♂ holotype above; same data, 1♂ 1 juvenile in RMNH.

*Assigned tentatively.* INDONESIA: *Papua Prov.:* Jayapura ("Hollandia") [-2°32'S, 140°42'E], tropical rainforest, 7.i.1945 (L.W. Saylor), 1♂1♀ in AMNH; same locality, on leaves, rainforest, 5.i.1945 (L.W. Saylor), 1♀ in AMNH.

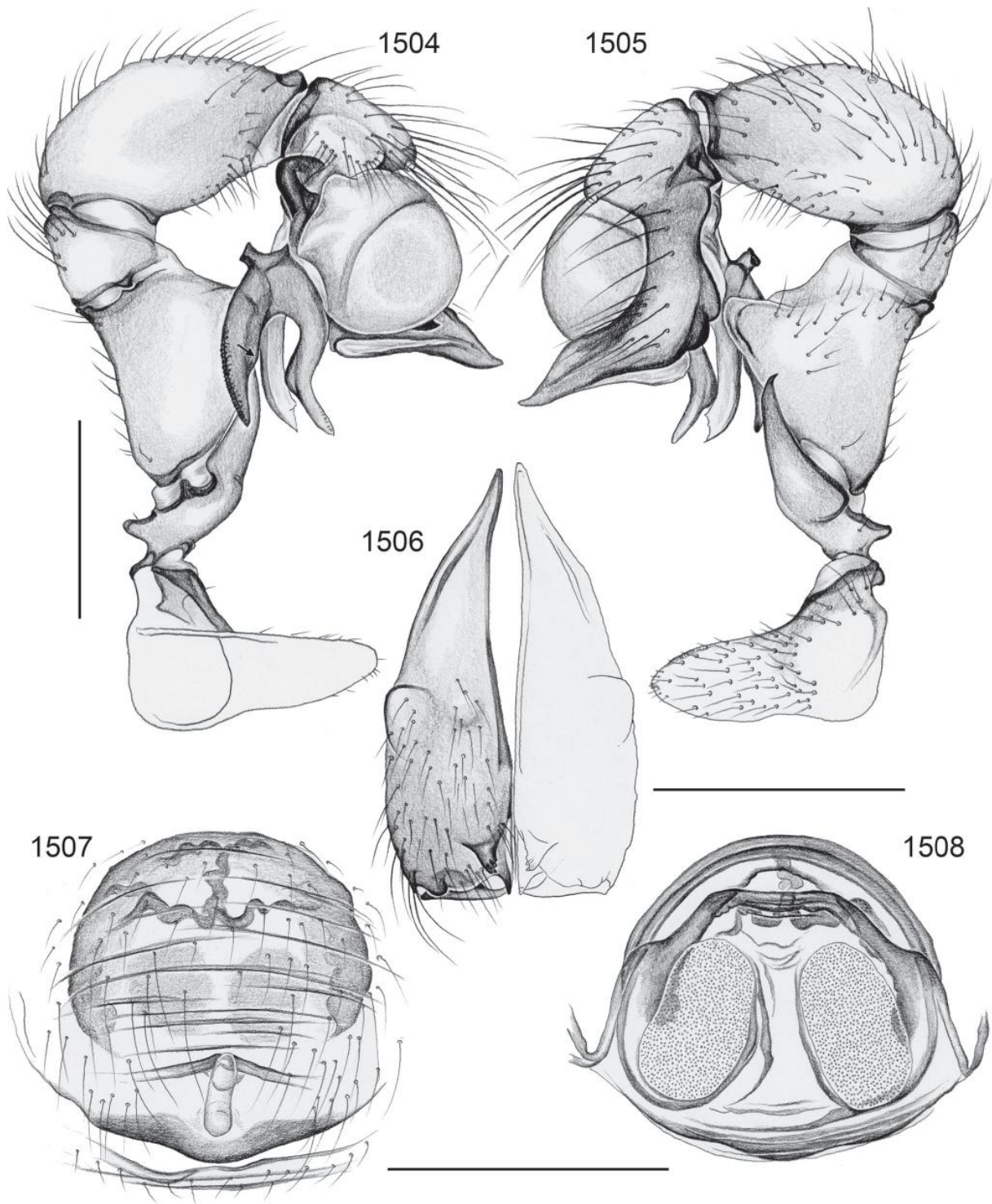


FIG. 1504-1508. *Pholcus karawari*. 1504, 1505. Left male palp, prolateral and retrolateral views (arrow points at detail of uncus that projects more in specimen from Jayapura). 1506. Male chelicerae, frontal view. 1507, 1508. Cleared female genitalia, ventral and dorsal views. Scale lines: 0.5.