

***Pholcus kingi* Huber, 2011**

Huber, B. A. 2011. Revision and cladistic analysis of *Pholcus* and closely related taxa (Araneae, Pholcidae). *Bonner zool. Monographien* 58: 1-510.

p. 368



1771-1773. *Ph. kingi*, male, dorsal and lateral views; female abdomen, ventral view.

p. 369



1796, 1797. *Ph. kingi*.

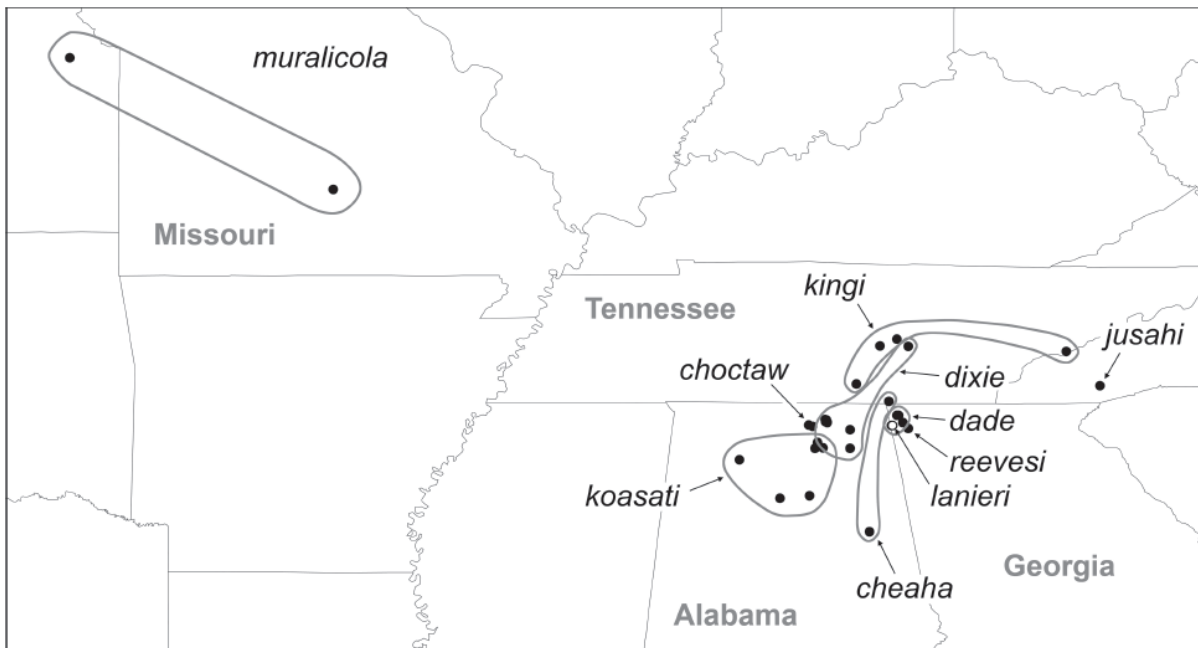


FIG. 1875. Known distribution of the *Pholcus kingi* species group.

Etymology. Named for Martin Luther King, Jr., leader in the African American civil rights movement.
Diagnosis. Distinguished from similar species (all *Pholcus* from TGA area) by details of uncus and appendix (Fig. 1878); from other congeners also by straight procurus (Fig. 1877) and weakly sclerotized epigynum (Fig. 1796).

Male (holotype). Total body length 4.7, carapace width 1.55. Leg 1: 53.5 (13.5 + 0.7 + 12.9 + 24.0 + 2.4), tibia 2: 8.8, tibia 3: 6.0, tibia 4 missing; tibia 1 L/d: 88. Habitus as in Figs. 1771 and 1772. Carapace ochre-yellow with large brown mark partly divided medially, ocular area not darkened except very indistinct median line and small mark below AME, clypeus not darkened, sternum ochre-yellow, margins and behind labium brown, legs ochre-orange, tips of femora and tibiae lighter, slightly darker rings on femora subdistally and in patella area, abdomen ochre-gray, with very indistinct darker internal spots visible through cuticle. Distance PME-PME 205 μ m, diameter PME 115 μ m, distance PME-ALE 35 μ m, distance AME-AME 35 μ m, diameter AME 80 μ m. Ocular area moderately elevated, few slightly stronger hairs posteriorly. No thoracic furrow; clypeus unmodified. Chelicerae as in *Ph. muralicola* (cf. Fig. 1913), distal frontal apophyses with three modified hairs each. Sternum wider than long (1.0/0.8), unmodified. Palps as in Figs. 1876 and 1877, coxa

Pholcus kingi n. sp.

Figs. 1771-1773, 1796, 1797, 1876-1878, 1888, 1889

Type. Male holotype from USA, Tennessee, Franklin Co., Sewanee, "Thumping Dick I" [35°13.1'N, 85°57.6'W], 1.ii.1958 (S. Lazell), in AMNH.

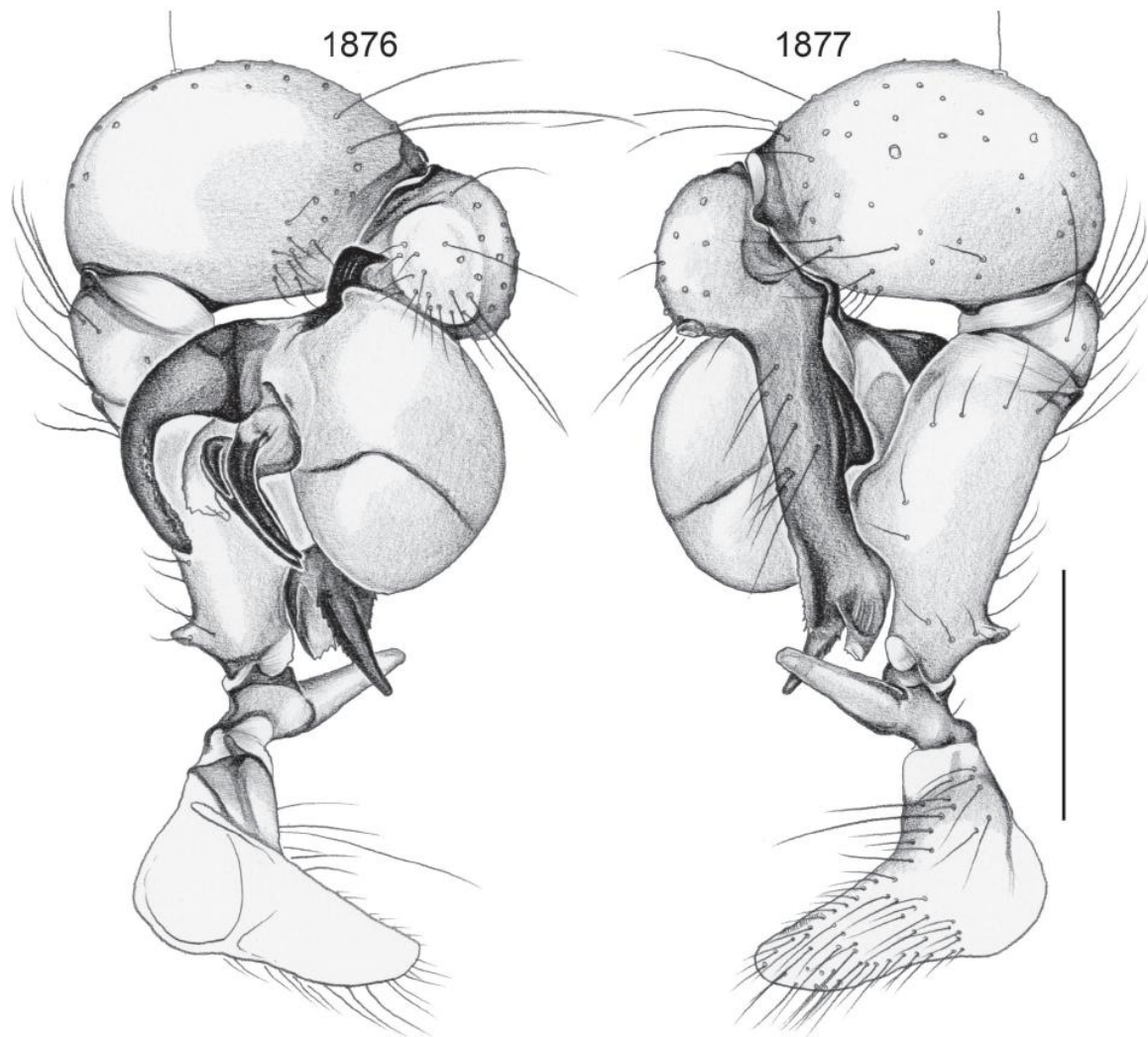


FIG. 1876, 1877. *Pholcus kingi*, left male palp, prolateral and retrolateral views. Scale line: 0.5.

unmodified, trochanter with retrolatero-ventral apophysis, femur with ventral bulge and distinct dorsal apophysis proximally, procurus rather simple, with two dorsal spines, bulb with long slender uncus, weakly sclerotized embolus, complex distinctive appendix consisting of three sclerotized processes (Fig. 1878). Legs without spines and curved hairs, few vertical hairs (most hairs missing); retrolateral trichobothrium on tibia 1 at 6%; prolateral trichobothrium absent on tibia 1, seen on tibiae 2 and 3; tarsus 1 with >20 pseudosegments, poorly visible in dissecting microscope.

Variation. Tibia 1 in two other males: 12.8, 14.4.

Female. In general similar to male, eye triads slightly closer together (distance PME-PME 175 μ m); tibia 1 in four females: 9.3, 10.0, 10.2, 10.4. Epigynum weakly sclerotized, slightly protruding, with internal

arc visible through cuticle anteriorly, small 'knob' (Figs. 1796, 1888); internal genitalia as in Figs. 1797 and 1889. Females not accompanied by male specimens are assigned tentatively.

Distribution. Known from Tennessee only (Fig. 1875).

Material examined. USA: *Tennessee:* Franklin Co., Thumping Dick near Sewanee: ♂ holotype above; same data, 1♂3♀ in AMNH; same locality and collector, 22.iii.1958, 1♀ 1 juv. in AMNH. Van Buren Co., 1.5 mi E Spencer [35°44.8'N, 85°29.1'W], 11.viii.1951, collector not given, 1♂1♀ in AMNH. *Assigned tentatively.* USA: *Tennessee:* Warren Co., Cardwell Mountain, near entrance to Cumberland Caverns, 8 mi SE McMinnville [-35°40'N, 85°41'W], from web beneath porch of old house, 12.v.1956 (T.C. Barr), 1♀ in AMNH; Cumberland

p. 395



FIG. 1878-1887. Left bulbal uncus and appendix, prolateral views (1878-1886; all at same scale) and left procurus, retrolateral view (1887) of representatives of the *Pholcus kingi* species group. 1878. *Ph. kingi*.

p. 396

Caverns, 27.ix.1988 (H.J. Guarisco), 2♀ in ZFMK;
Higgenbotham Cave (Cumberland Caverns),
12.v.1956 (T.C. Barr), 1 juv. in AMNH. Sevier Co.,
Elkmont [35°36'N, 83°30'W], Gr. Smoky Mts. Nat.
Park, 8.viii.1960 (T.C. Barr), 1♀ in AMNH.

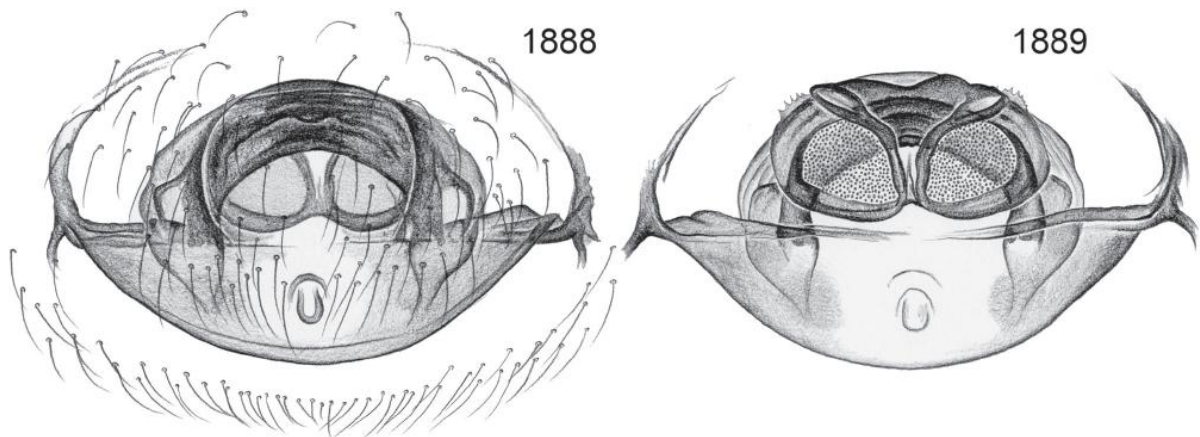


FIG. 1888-1891. Cleared female genitalia in ventral (left) and dorsal views. 1888, 1889. *Ph. kingi*.