

***Pholcus kohi* Huber, 2011**

Huber, B. A. 2011. Revision and cladistic analysis of *Pholcus* and closely related taxa (Araneae, Pholcidae). Bonner zool. Monographien 58: 1-510.

p. 406



dorsal and lateral views; female abdomen, ventral view.

1927-1929. *Ph. kohi*, male,

p. 407



1959, 1960. *Ph. kohi*.

p. 408

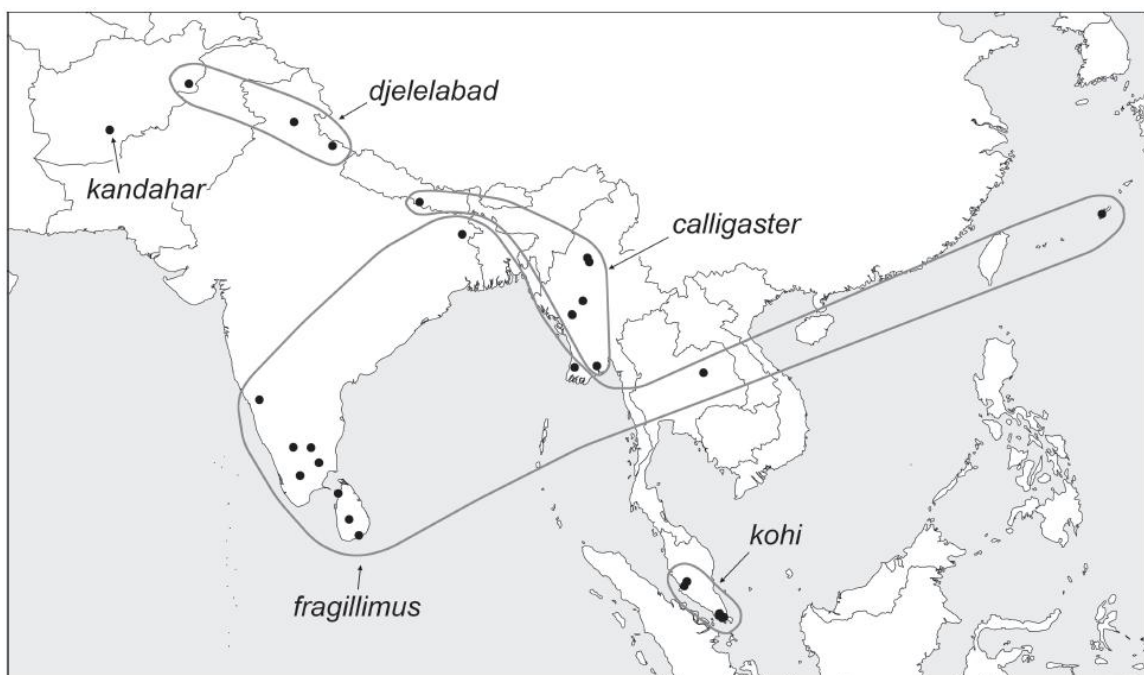


FIG. 1979. Known distribution of the *Pholcus calligaster* species group.

Pholcus kohi n. sp.

Figs. 1927-1929, 1959, 1960, 2022-2026

Type. Male holotype from Indonesia, Sumatra, Riau Islands, Bantam Island, outside Turi Beach Resort [1°11.6'N, 104°06.1'E], in fern thicket, 19.vi.1990 (J.K.H. Koh, 90.06.19.0009), in ZFMK.

Etymology. The species is named for Joseph K.H. Koh who kindly contributed material from various South-east Asian countries.

Diagnosis. Easily distinguished from most congeners by three pairs of frontal apophyses on male chelicerae (Fig. 2024) and large scales on uncus (Fig. 2022); from only similar species without male horns between eye triads (*Ph. fragillimus*) by details of male palpal morphology (Figs. 2022, 2023; tarsus without dorsal elongation, shapes of procurus and appendix), and female genitalia (Figs. 1959, 2026).

Male (holotype). Total body length 4.2, carapace width 1.1. Leg 1: 35.9 (8.6 + 0.5 + 8.6 + 15.6 + 2.6), tibia 2: 5.2, tibia 3: 3.4, tibia 4: 4.9; tibia 1 L/d: 81. Habitus as in Figs. 1927 and 1928. Carapace ochre-yellow with median brown mark, ocular area with pair of small brown marks posteriorly, clypeus not darkened, sternum dark brown, legs light brown, tips of femora and tibiae whitish, abdomen ochre-gray with indistinct darker marks dorsally and laterally, ventrally with long brown band widened near spinnerets and in genital area (cf. female, Fig. 1929). Distance PME-PME 210 μ m, diameter PME 150 μ m, distance PME-ALE 35 μ m, distance AME-AME 25 μ m, diameter AME 80 μ m. Ocular area elevated, without horns. No thoracic furrow (only short black line anteriorly); clypeus unmodified. Chelicerae as in

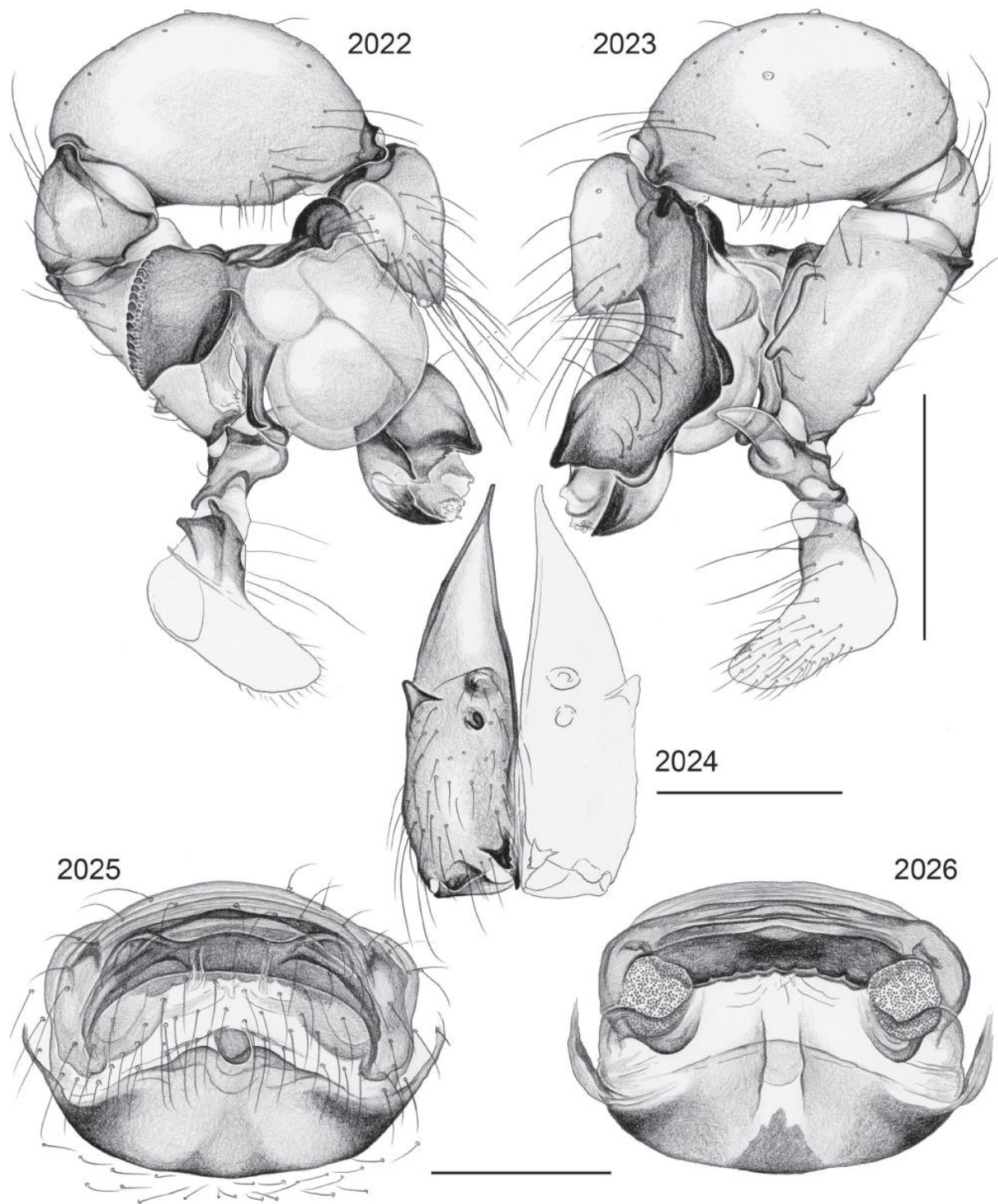


FIG. 2022-2026. *Pholcus kohi*. 2022, 2023. Left male palp, prolateral and retrolateral views. 2024. Male chelicerae, frontal view. 2025, 2026. Cleared female genitalia, ventral and dorsal views. Scale lines: 0.5 (2022, 2023), 0.3 (2024-2026).

Fig. 2024, distal apophyses with modified hairs, proximally with one pair of lateral and two pairs of frontal apophyses. Sternum wider than long (0.7/0.6), unmodified. Palps as in Figs. 2022 and 2023, coxa unmodified, trochanter and femur very similar to *Ph. fragillimus*, procurus complex distally, with several distinctive membranous and sclerotized elements, similar to *Ph. calligaster* but distal ventral sclerite larger, spine dorsally longer and more slender, bulb with uncus, weakly sclerotized embolus, appendix with sclerotized branch prolaterally. Legs without spines and curved hairs, few vertical hairs; retrolateral trichobothrium on tibia 1 at 4%; prolateral trichobothrium absent on tibia 1, present on other tibiae; many tarsal pseudosegments, but only distally a few fairly distinct.

Variation. Tibia 1 in 3 other males: 8.9, 9.2, 10.0. Dorso-lateral marks on abdomen variably distinct.

Female. In general similar to male but triads closer together (distance PME-PME 170 μ m). Tibia 1 in 6 females: 8.6-9.0 (mean 8.8). Epigynum triangular plate with weakly sclerotized 'knob' (Figs. 1959, 2025); internal genitalia as in Figs. 1960 and 2026.

Distribution. Known from Bantam Island in Indonesia, Singapore, and Malaysia (Fig. 1979).

Material examined. INDONESIA: *Riau*: Bantam Island: ♂ holotype above.

SINGAPORE: Pulau Ubin [1°08.7'N, 103°58.1'E], 5.vii.1992 (J.K.H. Koh, 92.07.05.0007), 1♂ in RMBR; same data but 12.xi.1990 (J.K.H. Koh, 90.11.12.26), 1♀ in RMNH. Kent Ridge Park [1°17.1'N, 103°47.5'E], fern thicket, 23.ii.1988 (J.K.H. Koh, 88.02.23.04), 1♂ in RMNH; same data but 7.ii.1989, (J.K.H. Koh, 89.02.07.17), 1♀ in RMNH; Kent Ridge, 29.iii.1989, no further data, 1♀ in RMBR. Bukit Timah [1°20.6'N, 103°46.5'E], Hindhede Drive, 1.v.1988 (H.K. Lua), 1♂ in RMBR; Bukit Timah, rainforest litter, 100 m a.s.l., 15.viii.1992 (J. & F. Murphy), 1♂ in CJFM (21022). Nee Soon pipeline track [-1°24'N, 103°49'E], 25.vi.2007 (D.J. Court), 1♀ in RMBR.

MALAYSIA: Federal District, Kuala Lumpur, Damansara Road [-3°08'N, 101°37'E], in oil palm plantation, 30.xii.1984 (J.A. Beatty), 1♂2♀ in BPBM. Genting [3°24.5'N, 101°45.9'E], secondary jungle, 600 m a.s.l., 26.xi.1990 (J. & F. Murphy), 3♂1♀ in CJFM (18943).