

***Pholcus kwamgumi* Huber, 2011**

Huber, B. A. 2011. Revision and cladistic analysis of *Pholcus* and closely related taxa (Araneae, Pholcidae). Bonner zool. Monographien 58: 1-510.

p. 261



1245, 1246. *Ph. kwamgumi*, male, dorsal and lateral views.

1263, 1264. *Ph. kwamgumi*.

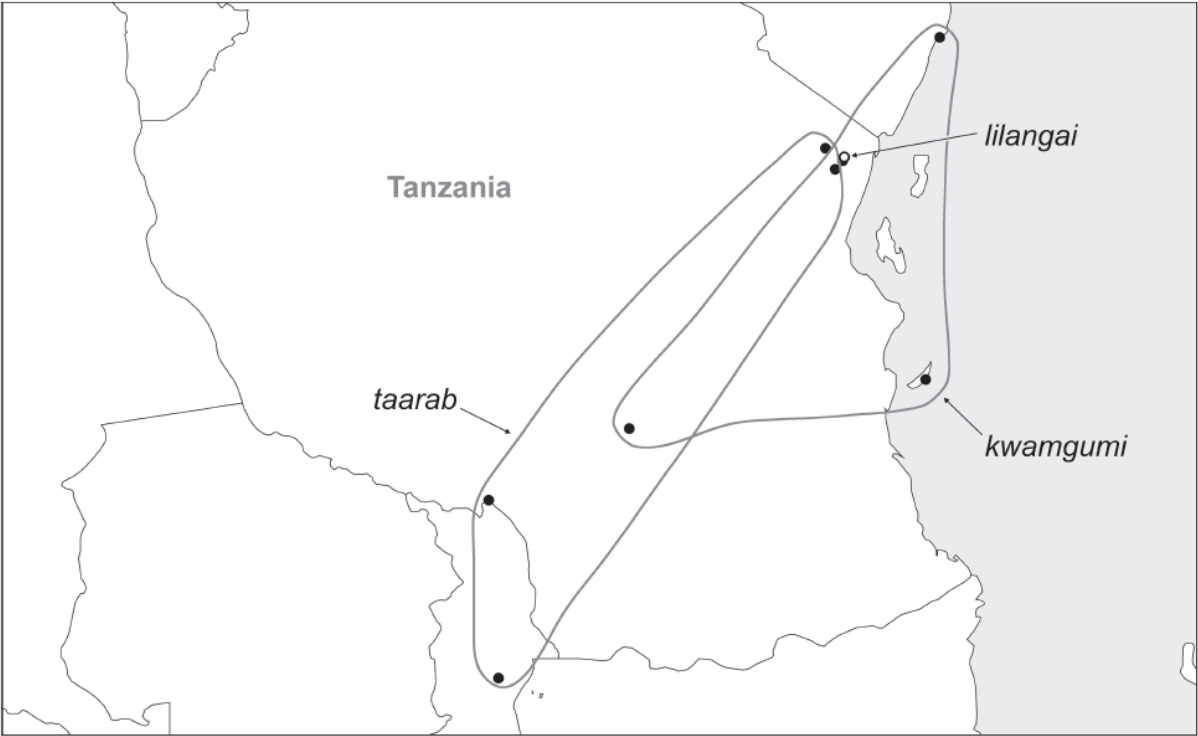


FIG. 1275. Known distribution of the *Pholcus taarab* species group.

Pholcus kwamgumi n. sp.

Figs. 1245, 1246, 1263, 1264, 1282-1297

Type. Male holotype from Tanzania, Tanga Region, Muheza Dist., Kwamgumi Forest Reserve (4°57'S, 38°44'E), 170-220 m a.s.l., 26.vii.1995 ("Fog 12-GA"), in ZMUC.

Etymology. The specific name is a noun in apposition, derived from the type locality.

Diagnosis. Distinguished from similar species (*Ph. taarab*, *Ph. lilangai*) by morphology of male palp (Figs. 1282, 1283; shape of procurus, uncus with distinctive prolateral process, appendix); from *Ph. lilangai* also by absence of black band anteriorly between eye triads.

Male (holotype). Total body length 5.3, carapace width 0.85. Leg 1: 33.5 (8.4 + 0.4 + 7.7 + 14.5 + 2.5), tibia 2: 5.7, tibia 3: 3.6, tibia 4: 5.5; tibia 1 L/d: 109. Habitus as in Figs. 1245 and 1246. Entire prosoma pale ochre-yellow, legs ochre-yellow, patellae and tibia-metatarsus joints light brown, abdomen monochromous pale ochre-gray. Distance PME-PME 325 µm, diameter PME 80 µm, distance PME-ALE 25 µm, distance AME-AME 60 µm, diameter AME 25 µm. Ocular area not elevated, triads on low humps directed laterally. No thoracic furrow; clypeus unmodified. Chelicerae as in Fig. 1286 (very similar to *Ph. taarab*, cf. Fig. 1279), distal apophyses with two modified hairs each (Fig. 1292). Sternum wider than long (0.55/0.50), unmodified. Palps as in Figs. 1282 and 1283, coxa unmodified, trochanter with long straight retrolatero-ventral apophysis, femur with small proximal apophysis retrolatero-dorsally, ventrally with small apophysis rather than ridge, procurus similar to *Ph. taarab* but hinged ventral process much shorter and shapes of sclerites different (Figs. 1287-1289), uncus with distinctive proximal process, embolus weakly sclerotized and distally widened, appendix a simple rod (Figs. 1290, 1291). Legs without spines and curved hairs, few vertical hairs (many hairs missing); retrolateral trichobothrium on tibia 1 at 4%; tarsal pseudosegments barely visible in dissecting microscope. Gonopore with four epiandrous spigots (Fig. 1295); ALS with seven spigots each (Fig. 1294).

Variation. Tibia 1 in 14 other males: 7.1-8.0 (mean 7.6).

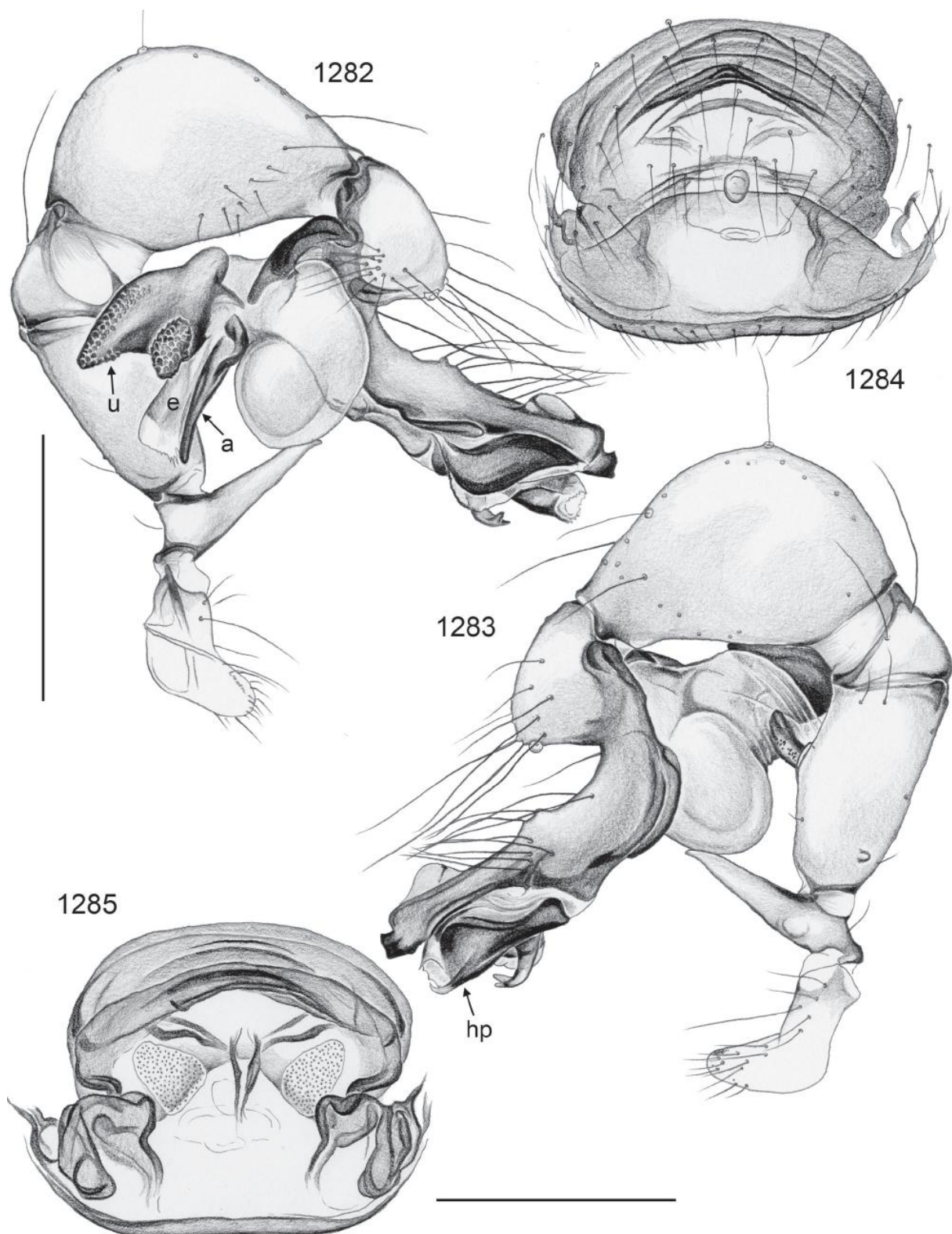


FIG. 1282-1285. *Pholcus kwangumi*. 1282, 1283. Left male palp, prolateral and retrolateral views. 1284, 1285. Cleared female genitalia, ventral and dorsal views. Scale lines: 0.5 (1282, 1283), 0.3 (1284, 1285).

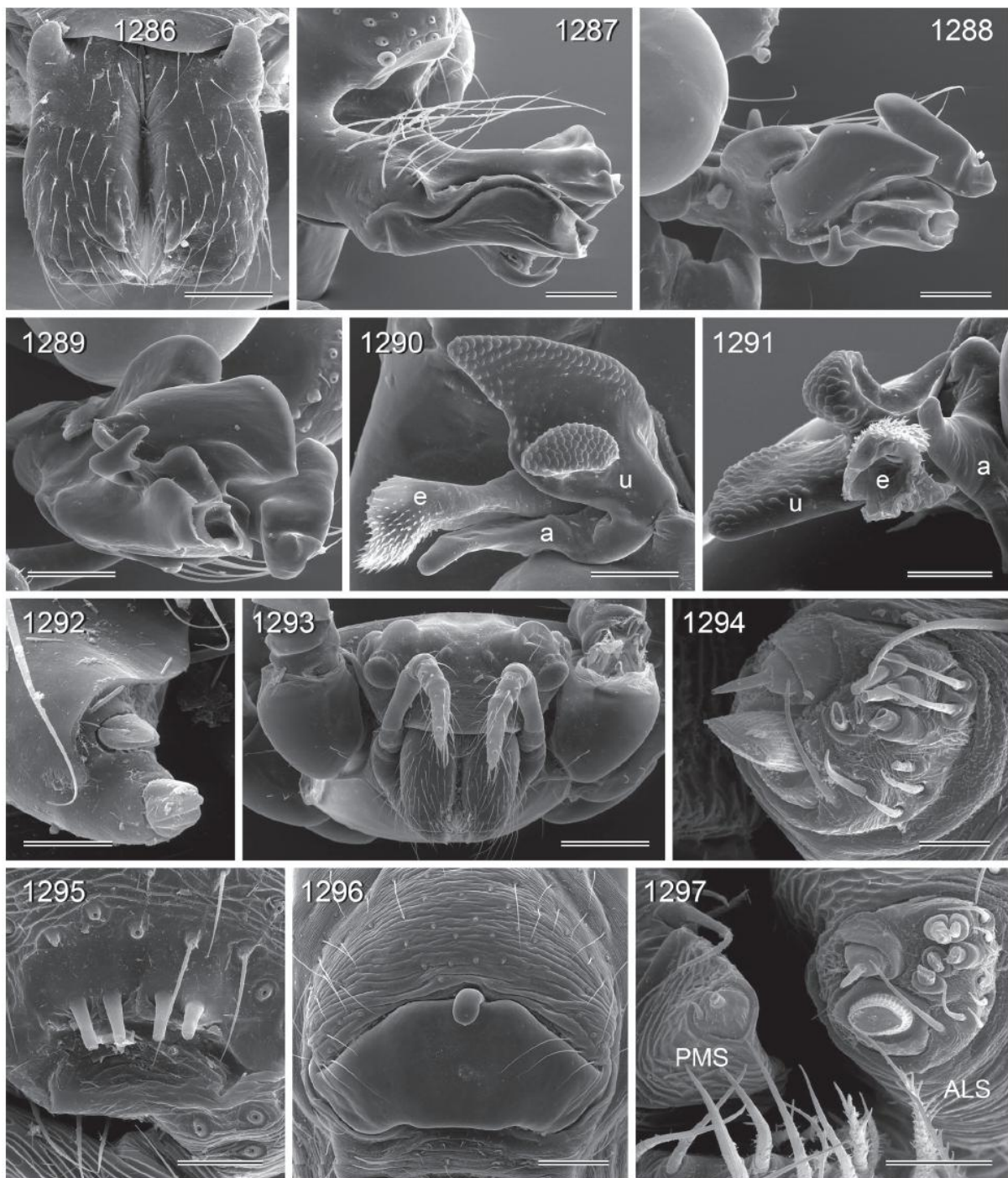


FIG. 1286-1297. *Pholcus kwamgumi*. 1286. Male chelicerae, frontal view. 1287. Right procurus, retrolatero-distal view. 1288. Left procurus, prolatero-distal view. 1289. Tip of left procurus, distal view. 1290, 1291. Left bulbal processes. 1292. Distal male cheliceral apophysis. 1293. Female prosoma, frontal view. 1294. Male ALS. 1295. Male gonopore. 1296. Epigynum. 1297. Female ALS and PMS. Scale lines: 200 μm (1293), 100 μm (1286-1290, 1296), 80 μm (1291), 30 μm (1295), 20 μm (1297), 10 μm (1292, 1294).

Female. In general very similar to male, triads closer together (Fig. 1293; distance PME-PME 210 μm). Tibia 1 in 21 females: 5.0-5.9 (mean 5.5). Epigynum very similar to *Ph. taarab*, anterior arc slightly less

strongly curved (Fig. 1263) and internal membranous structures slightly different (Figs. 1264, 1285). ALS with seven spigots each (Fig. 1297). The single female from Kenya is assigned tentatively because

females of *Ph. kwamgumi* and *Ph. taarab* are difficult to separate.

Distribution. Known from Tanga, Iringa, and Pwani Regions in Tanzania and from a specimen assigned tentatively from Kenya (Fig. 1275).

Material examined. TANZANIA: *Tanga Region:* Muheza Dist., Kwamgumi Forest Reserve: ♂ holotype above; same data but 18.vii. ("Fog 7"), 20.vii. ("Fog 8"), 22.vii. ("Fog 9"), 23.vii. ("Fog 10"), 25.vii. ("Fog 11"), 26.vii. ("Fog 12"), 31.x. ("Fog 13"), 2.xi. ("Fog 14"), 3.xi. ("Fog 15"), 5.xi. ("Fog 16"), 9.xi. ("Fog 18"), 10.xi. ("Fog 19"), 22♂ 32♀ (46 vials) in ZMUC. Segoma Forest Reserve (4°59'S, 38°44'E), 210 m a.s.l., 11.xi.1995 ("Fog. 20"), 1♂ in ZMUC. *Iringa Region:* Mufindi Distr., Uzungwa Scarp Forest Reserve (8°31.6'S, 35°54'E), 750 m a.s.l., "canopy fog 40-EB", 17.iii.1996 (Mc Kamey *et al.*), 1♂ in ZMUC. *Pwani Region:* Mafia Island, Mlola (7°53'S, 39°50'E), evergreen coastal thicket, on clay, x.-xi.1990 (Frontier), 2♂ 3♀ in ZMUC.

Assigned tentatively. KENYA: *Coast Prov.:* Watamu [3°21'S, 40°01'E], Jilore, forest, under broad leaves, viii.1980 (J. & F. Murphy, 9248), 1♀ in ZFMK.