

***Pholcus kwanaksanensis* Namkung & Kim, 1990**

Namkung, J., Kim, J. P. 1990. A new species of the genus *Pholcus* (Araneae: Pholcidae) from Korea. Korean Arachnol. 5(2): 131-137.

p. 132

Pholcus kwanaksanensis n. sp.

(Figs. 1-10)

Male (holotype)

MEASUREMENTS (mm) : Body length 6.10 ; carapace length 1.68, width 1.84 ; abdomen length 4.31, width 2.16 ; sternum length 1.05, width 1.16 ; labium length 0.32, width 0.37 ; endite length 0.79, width 0.42 ; cheliceral length 0.74, width 0.31 ; anterior eye row 0.64 ; posterior eye row 0.72.

Leg I 51.23 (13.04, 0.74, 13.04, 21.93, 2.47)

II 34.44 (9.36, 0.68, 8.99, 13.83, 1.58)

III 23.56 (6.68, 0.68, 5.94, 9.10, 1.16)

IV 32.19 (9.73, 0.68, 8.10, 12.10, 1.58)

Palp 3.73 (0.63, 0.47, 1.37, 1.26)

DESCRIPTION : Carapace wider than the length in the index 109; pale yellow with brownish gray dorsal markings of the thoracic part and middle line of head.

Anterior eye row slightly recurved in frontal view, posterior eye row stright. Eye ratio, ALE>PLE=PME>AME (7 : 5=5 : 4), AER slightly shorter than PER, the index 97. Median ocular quadrangle wider behind than in front, in the ratio of 18 : 9, and wider than long in the ratio of 18 : 12. Clypeus about 5 times the diameter of anterior median eye.

Chelicerae brown, armed with three teeth-like prominences on the front and a long tooth

on the inner margin of fang furrow, as shown in fig. 7.

Endite pale yellow, but the tip yellowish white : contact at the distal end each other, longer than the width, the index 42. Labium and sternum yellow-brown, mottled with grayish brown, labium fused to sternum. Sternum widest at between the 2nd and 3rd coxae, the end broadly protruded, but not extending between 4th coxae.

Leg very long, yellow-brown in the ground color, with dark brown annulation on the tibiae and distal part of femora. Leg formula 1. 2. 4. 3 : leg formular index 100 : 67 : 46 : 63.

Abdomen cylindrical, the index 50 : pale-yellow, with a large number brownish gray spots on dorsum.

Male palp : The uncus reddish dark brown, birds-head shaped in profile : embolus brownish yellow, the tip hairy. Spur of trochanter of male palp very long, and curved at the tip, as shown in fig. 5.

Female (allotype)

MEASUREMENTS (mm.): Body length 6.00 : carapace length 1.58, width 1.74 : abdomen length 4.31, width 2.58 : sternum length 0.79, width 1.16 : labium length 0.32, width 0.42 : endite length 0.58, width 0.37, cheliceral length 0.74, width 0.27 : anterior eye row 0.61 : posterior eye row 0.69.

Leg I 37.17 (9.05, 0.68, 9.73, 15.41, 2.30)

II 22.51 (7.00, 0.68, 6.52, 6.84, 1.47)

III 18.40 (5.31, 0.63, 4.52, 6.84, 1.10)

IV 25.42 (7.36, 0.66, 6.36, 9.57, 1.47)

Palp 1.53 (0.63, 0.16, 0.27, 0.47)

DESCRIPTION : Essentially similar to male in shape and color. Carapace index 110. AER shorter than PER (22 : 25). Order of eye in diameter ALE>PLE=PME>AME(7 : 5=5 : 3). Labium slightly wider than long (8 : 6), sternum wider than the length (22 : 15). Leg formula 1. 4. 2. 3. Leg formular index 100 : 61 : 50 : 68. Abdominal index 60.

Epigynum large and swollen, and both side singularly protruded, epigynum and genitalia as shown in figs. 8-10.

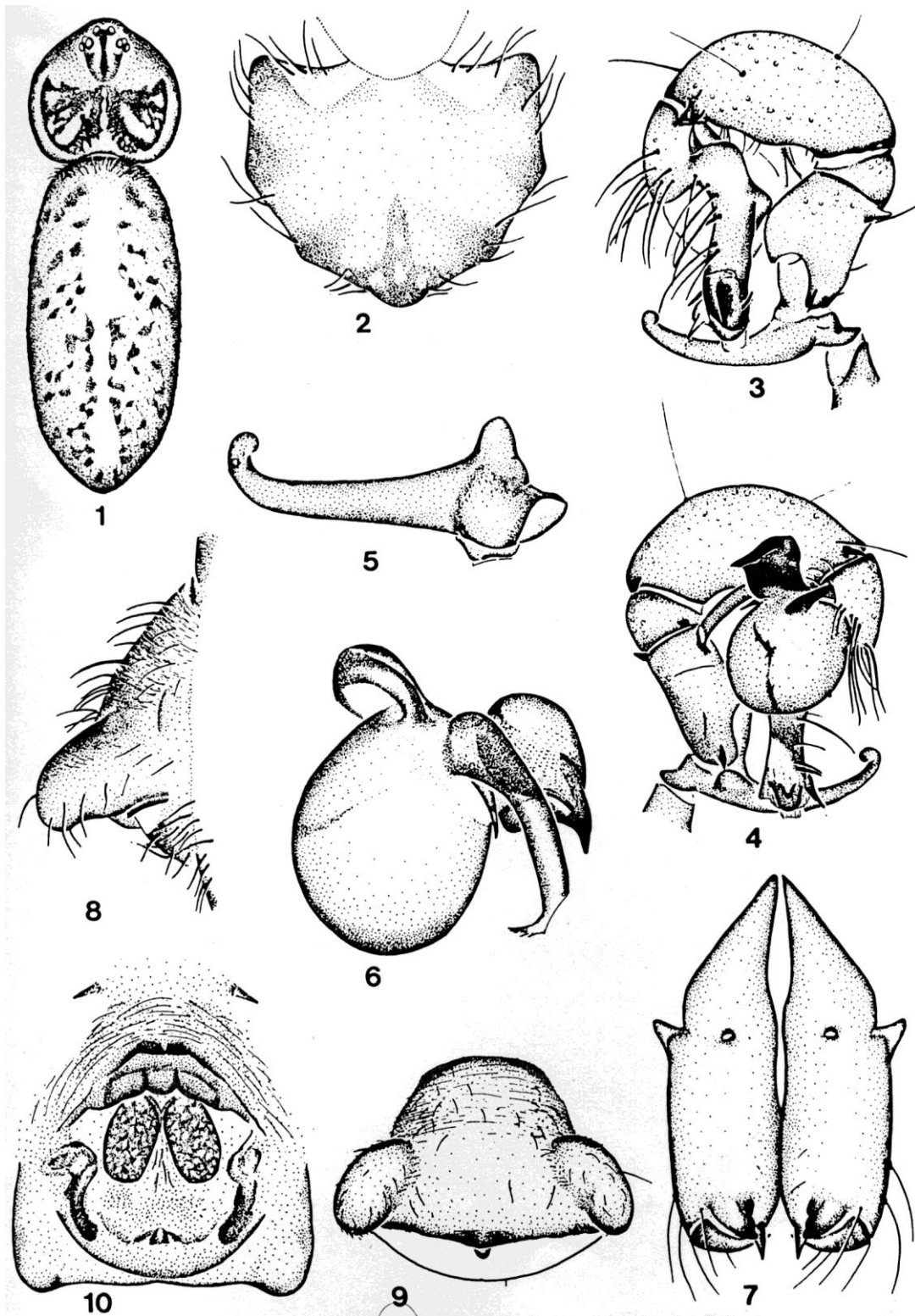
SPECIMEN EXAMINED. Holotype : male 3-X-1989. A mountain side in Mt. Kwanaksan of Shillim-dong, Kwanak-gu, Seoul, Korea. C. H. CHONG leg. Allotype : female, same data as holotype. Paratype. Mt. Kwanaksan(1♂, 1♀, 3-X-1989, 2♂♂, 4♀♀, 16-IX-1989, C. H. CHONG. leg. 1♂, 3♀♀, 11-VI-1989, J.R. JUN leg.). Mt. Surisan, Saengguk-myon, Umsong-gun, Chungchongbuk-do (1♀, 2 subad. ♀♀, 5-VIII-1965, J. NAMKUNG leg.).

ETYMOLOGY. The specific name is derived from the locality of holotype.

REMARKS. The present species resemble to the Chinese species *Ph. jixianensis* ZHU et YU and *Ph. henanensis* ZHU et MAO. However, it is distinctly different from the latter species for the structure of male palpal organ, and the structure of epigynum and genitalia.

Figs. 1–10. *Pholcus kwanaksanensis* n. sp.

1. Male, dorsal view
2. Sternum of male, ventral view
3. Male palp, left, ectal view
4. Male palp, left, inner view
5. Trochanter of male palp, left, ectal view
6. Uncus, embolus and bulb, left, ectal view
7. Chelicerae, male, frontal view
8. Epigynum of female, lateral view
9. Epigynum of female, ventral view
10. Genitalia, inner view



5-5 관악유령거미

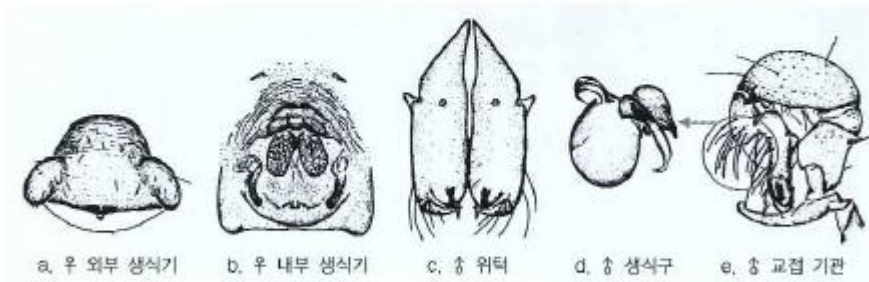
Pholcus kwanaksanensis Namkung et Kim 1990



관악유령거미(우)



관악유령거미(♂)



a. ♀ 외부 생식기 b. ♀ 내부 생식기 c. ♂ 위턱 d. ♂ 생식구 e. ♂ 교접 기관

- 몸 길이
우, ♂ 6mm 내외
- 출현기
6~8월
- 분포
한국(고유종)
- 모식산지
서울 관악산(冠岳山)

배갑은 담갈색으로 너비가 넓은 편이고, 정중선으로 갈라지는 회갈색 얼룩무늬가 가슴부에 있다. 위턱 밑마디 앞끝돌기는 큰 유방형이다. 가슴판은 너비가 넓으며, 황갈색 바탕에 다리 밑마디에 대응한 희미한 얼룩무늬가 있다. 다리는 길며, 황갈색 바탕에 암갈색 고리무늬가 있다. 배는 긴 타원형이며, 담황색 바탕에 회갈색 점무늬가 다수 산재해 있다. 암컷 생식기는 크게 부풀어 있고, 양 옆이 콧등 모양으로 돌출되었다. 수컷 더듬이다리 도래마디 돌기는 길고 끝이 굽어 있다. 산지성으로 바위 밑 등에 불규칙한 그물을 치고 있다.

Huber, B. A. 2011. Revision and cladistic analysis of *Pholcus* and closely related taxa (Araneae, Pholcidae). Bonner zool. Monographien 58: 1-510.

p. 462

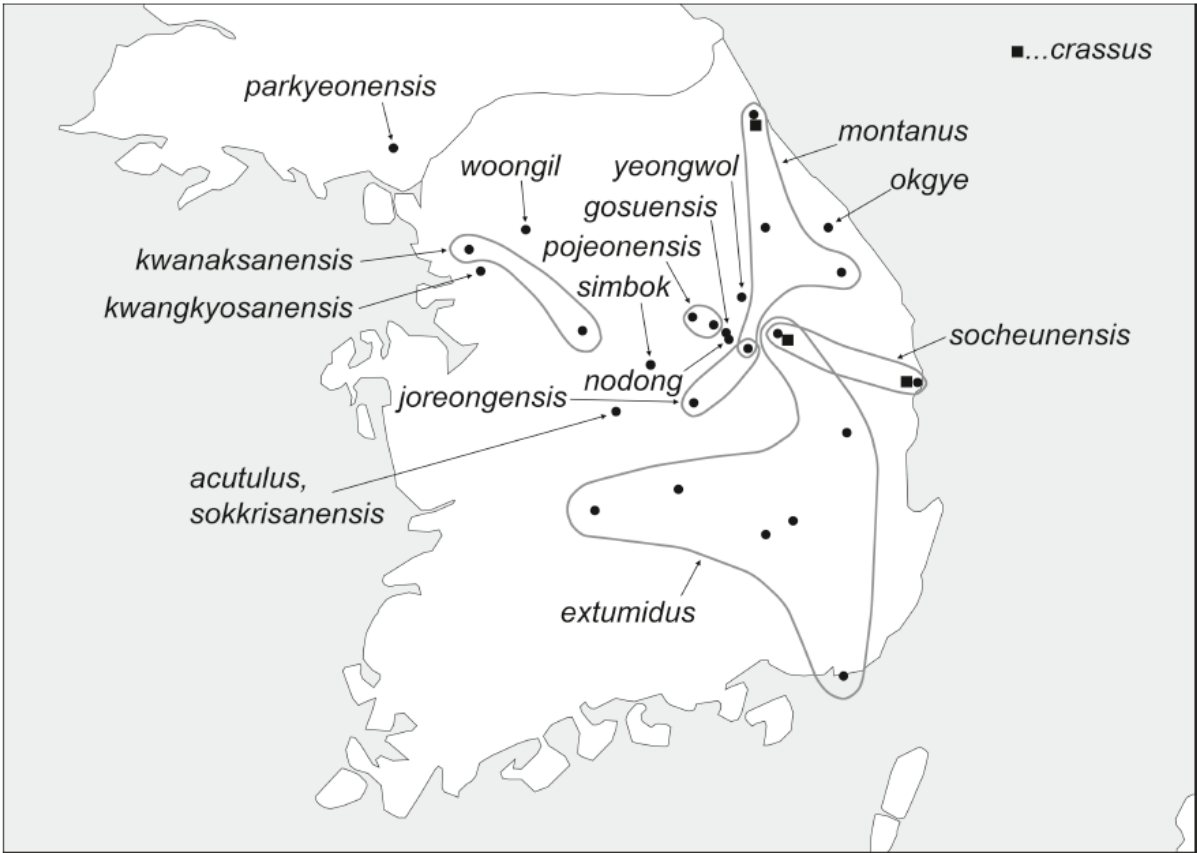


FIG. 2217. Known distribution of Korean representatives of the *Pholcus phungiformes* species group.