

***Pholcus kwangkyosanensis* Kim & Park, 2009**

Kim, J. P., Park, Y. C. 2009. One new species of genus *Pholcus* (Araneae: Pholcidae) from Korea. Korean Arachnol. 25: 99-103.

p. 95

***Pholcus kwangkyosanensis* sp. 광교유령거미**
(Fig. 1)

(1) Material examined. Holotype: 31-May, 2008. ♂3, ♀4

Collector: Yoo, S. H.

Kwangkyo Mountain, Suwon-si, Kyeonggi-do, Korea

(2) Measurements

Table 1. *Pholcus kwangkyosanensis* sp. Measurements

Measurements(mm)	♂	♀
Body length	9.37	11.56
Abdomen length	6.69	7.47
Abdomen width	2.68	4.09
Abdomen thickness	2.34	3.47
Carapace length	3.25	3.10
Carapace width	3.03	3.16

Carapace thickness	2.56	2.75
AER	1.22	1.28
PER	1.32	1.35
Leg Formular	1>2>4>3	1>2>4>3
Epigynum width	-	1.91
Epigynum length	-	2.16

(3) Etymology: The specific name is taken from its type locality, Kwangkyo Mountain, Suwon-si, Kyeonggi-do, Korea

(4) Remark : The present species resemble to the Chinese species *P. jixianensis* Zhu et Yu., *P. hananensis* Zhu et Mao.

The present species resemble to the Korean endemic species, *Pholcus kwanaksanensis* Namkung & Kim, 1996.

Bird-shaped head of uncus and the long straight procurus. However, It is distinctly different from the species for the structure of male palpal organ and the structure of epigynum and genitalia. *Pholcus kwangkyosanensis* sp. is distinguished from the other species by color of female venter pattern, cocoon shaped abdomen.

(5) Body size: ♂ - 9 mm, ♀ - 11 mm

(6) Maturity: May~November

(7) Distribution: Korea (Indigenous species)

Table 2. *Pholcus kwangkyosanensis* sp. Collecting site

No	Locality	Day	Sex	GPS	
1	Kwangkyo Mountain, Suwon-si, Kyeonggi-do, Korea	2008. 5.31,	♂3, ♀4	37°19'46.517"N	127°0'53.03"E

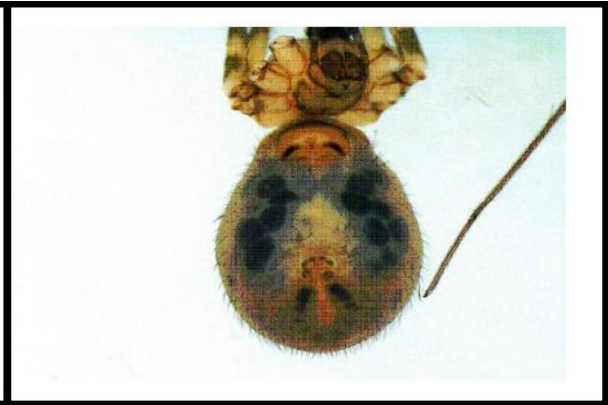
(8) Ecology

Pholcids are found mainly in dark spaces, under ground objects, in leaf and plants detritus, in soil openings and caves. spinning in hollow trees, beneath overhanging rocks or in the corners of houses, a tangled network of threads, amongst which the occupant hangs head downwards. The female carries her cocoon in her chelicerae.

[Ubick et al, 2004]



A. Female, Body (lateral view)



B. Female, Abdomen (ventral view)



C. Female, Body (lateral view)



D. Male, Body (dorsal view)



E. Female, Body (lateral view)



F. Female, Epigynum

Fig 1. *Pholcus kwangkyosanensis* sp. (A~F)



G. Male, Body(lateral view)



H. Male, Uncus (ventral view)



I. Male, Palp organ (lateral view)



J. Male, Palp organ (ventral view)



K. Male, Abdomen (dorsal view)



L. Male, Palp (ectal view)

Fig 1. *Pholcus kwangkyosanensis* sp. (G~L)

Huber, B. A. 2011. Revision and cladistic analysis of *Pholcus* and closely related taxa (Araneae, Pholcidae). Bonner zool. Monographien 58: 1-510.

p. 462

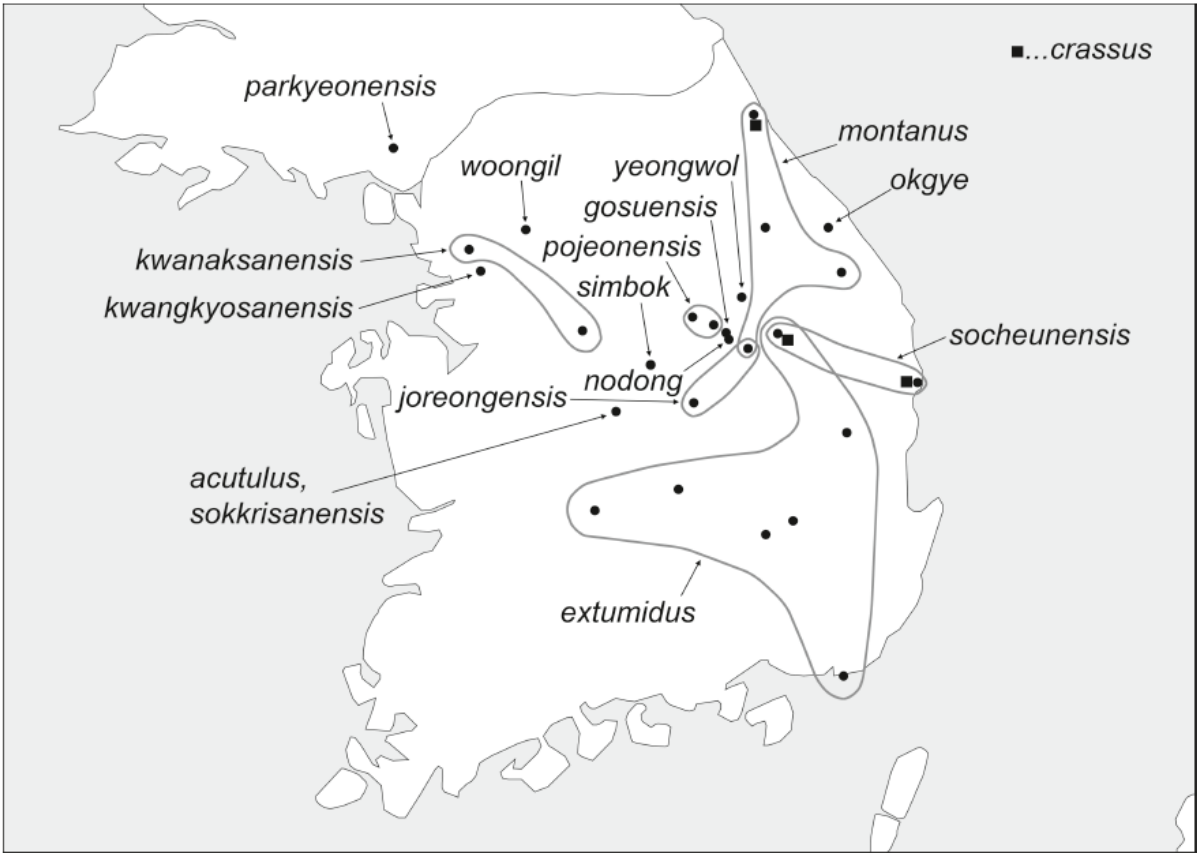


FIG. 2217. Known distribution of Korean representatives of the *Pholcus phungiformes* species group.