

***Pholcus laksao* Huber, 2011**

Huber, B. A. 2011. Revision and cladistic analysis of *Pholcus* and closely related taxa (Araneae, Pholcidae). *Bonner zool. Monographien* 58: 1-510.

p. 420

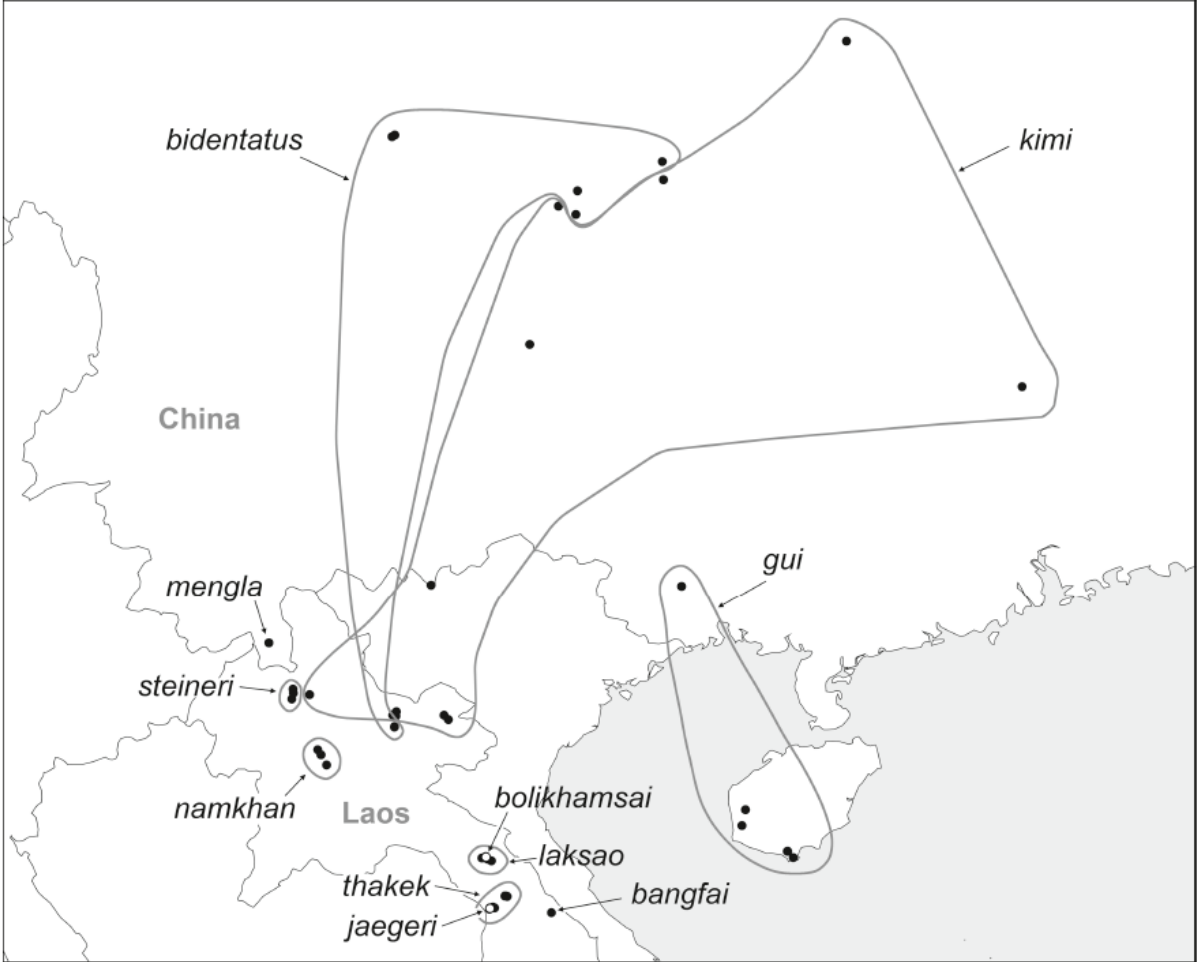


FIG. 2027. Known distribution of the *Pholcus bidentatus* species group.

Pholcus laksao n. sp.

Figs. 2058-2061

Type. Male holotype from Laos, Bolikhamsai Prov., Lak Sao (1) (18°11.2'N, 104°53.9'E), 500 m a.s.l., in cave, at day, by hand, 6.iii.2010 (P. Jäger, J. Martens), in SMF.

Etymology. The specific name is a noun in apposition, derived from the type locality.

Diagnosis. Distinguished from congeners by male palpal morphology (Figs. 2058, 2059; long pointed trochanter apophysis, procurus shape, uncus shape, distinctive appendix) and female genitalia (Figs. 2060, 2061; shapes of epigynum and internal structures).

Male (holotype). Total body length 5.5, carapace width 1.5. Leg 1: 50.6 (12.1 + 0.7 + 12.1 + 23.2 + 2.5), tibia 2: 8.1, tibiae 3: 5.3, tibia 4: 7.4; tibia 1 L/d: 80. Habitus similar to *Ph. thakek* (cf. Fig. 1935). Carapace pale ochre-yellow with large light brown median mark including ocular area posteriorly, clypeus not darkened, sternum whitish, margins narrowly dark brown, posterior third with darker smudges, legs ochre-yellow, tips of femora and tibiae lighter, indistinct darker rings on femora and tibiae subdistally, in patella area, and on metatarsi proximally, abdomen ochre-gray with some darker internal spots dorsally, ventrally monochromous. Distance PME-PME 470 µm, diameter PME 140 µm, distance PME-ALE 45 µm, distance AME-AME 60 µm, diameter AME 60 µm. Ocular area elevated, each triad on additional short elevation, many stronger hairs posteriorly. No thoracic furrow (only dark line anteriorly); clypeus unmodified. Chelicerae very similar to *Ph. thakek* (cf. Fig. 2052) but slightly smaller, distal apophyses slightly larger, no proximal median humps. Sternum wider than long (1.00/0.85), unmodified. Palps as in Figs. 2058 and 2059, coxa unmodified, trochanter with long pointed retrolatero-ventral apophysis, femur with retrolatero-dorsal hump proximally and larger ventral protuberance, procurus with two prolatero-dorsal spines, distinctive hinged sclerite dorso-distally, bulb with large uncus, weakly sclerotized long embolus, distinctive appendix with large weakly sclerotized proximal part and sharply bent distal part. Legs without spines and curved hairs, few vertical hairs (most hairs missing); retrolateral trichobothrium on tibia 1 at 5.5%; prolateral trichobothrium absent on tibia 1, present on other tibiae.

Variation. The single male from Lak Sao (4) is assigned tentatively because it has a slightly narrower uncus, a narrower appendix, and a more clearly different procurus. Tibia 1 in two other males: 12.1, 12.3.

Female. In general similar to male but dorsal pattern on carapace different (pair of small marks as in *Ph. jaegeri*, cf. Fig. 1938; this is also the pattern in juveniles, including penultimate males), triads closer together (distance PME-PME 220 µm), less elevated, pattern on sternum not limited to posterior part. Tibia 1 in 8 females: 8.8-10.2 (mean 9.3). Epigynum with large triangular plate with distinctive pattern and anterior 'knob' (Fig. 2060); internal genitalia as in Fig. 2061 (the female from Lak Sao (4) is not visibly different from the other females examined).

Distribution. Known from Bolikhamsai Prov., Laos, only (Fig. 2027).

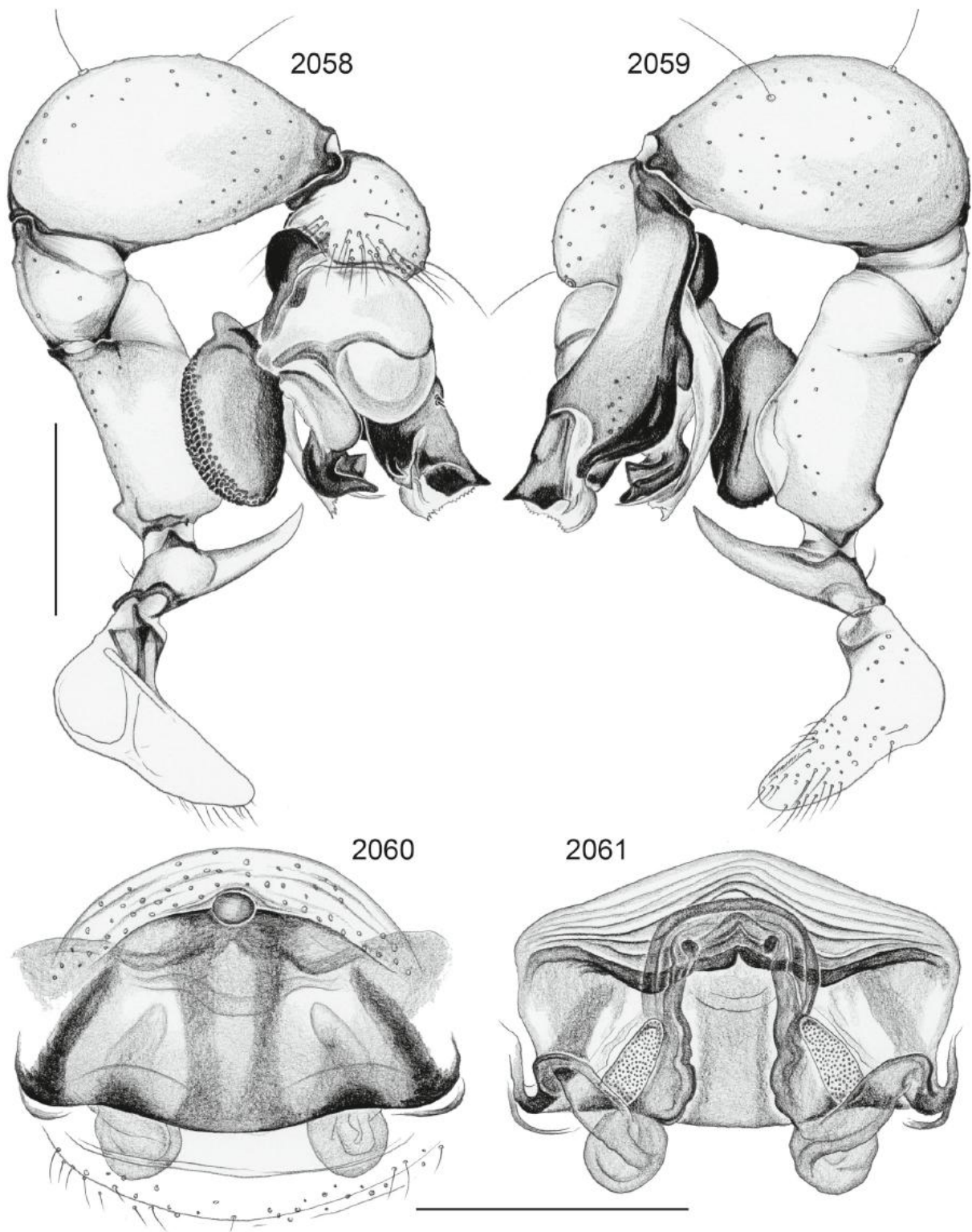


FIG. 2058-2061. *Pholcus laksao*. 2058, 2059. Left male palp, prolateral and retrolateral views. 2060, 2061. Cleared female genitalia, ventral and dorsal views. Scale lines: 0.5.

Material examined. LAOS: *Bolikhamsai Prov.*: Lak Sao (1): ♂ holotype above; same data, 1♂3♀ in SMF; same locality, cave entrance, rocks, vegetation, at day, by hand, 8.xi.2009 (P. Jäger, S. Bayer), 4♀ in SMF. Lak Sao (5) (18°12.7'N, 104°50.4'E), 550 m a.s.l., cool valley, bed of stream, at day, sieving, 10. xi.2009 (P. Jäger, S. Bayer), 2♀ in SMF.

Assigned tentatively. LAOS: *Bolikhamsai Prov.*: Lak Sao (4) (18°13.6'N, 104°44.8'E), 530 m a.s.l., inside cave and cave entrance, at day, by hand, 9.xi.2009 (P. Jäger, S. Bayer), 1♂1♀ in SMF.