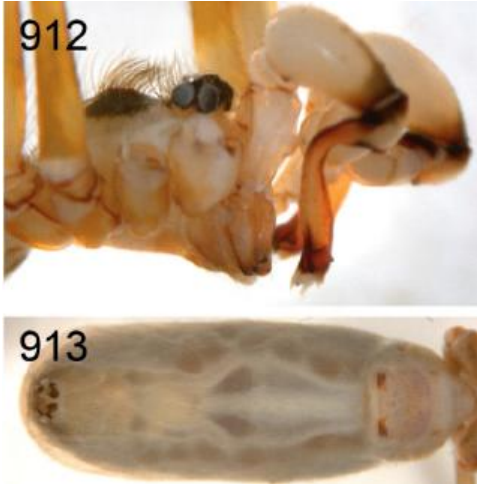


***Pholcus luki* Huber, 2011**

Huber, B. A. 2011. Revision and cladistic analysis of *Pholcus* and closely related taxa (Araneae, Pholcidae). Bonner zool. Monographien 58: 1-510.

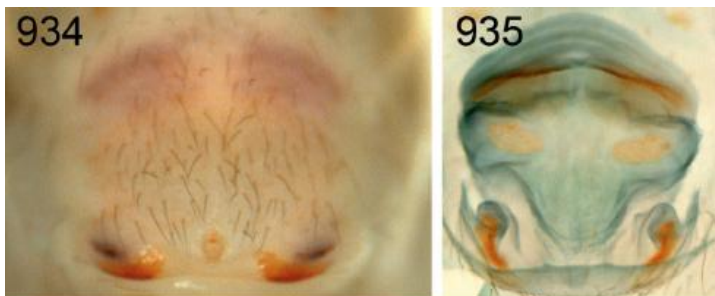
p. 198



. 912, 913.

Ph. luki, male prosoma, lateral view; female abdomen, ventral view.

p. 199



934, 935. *Ph. luki*.

p. 212

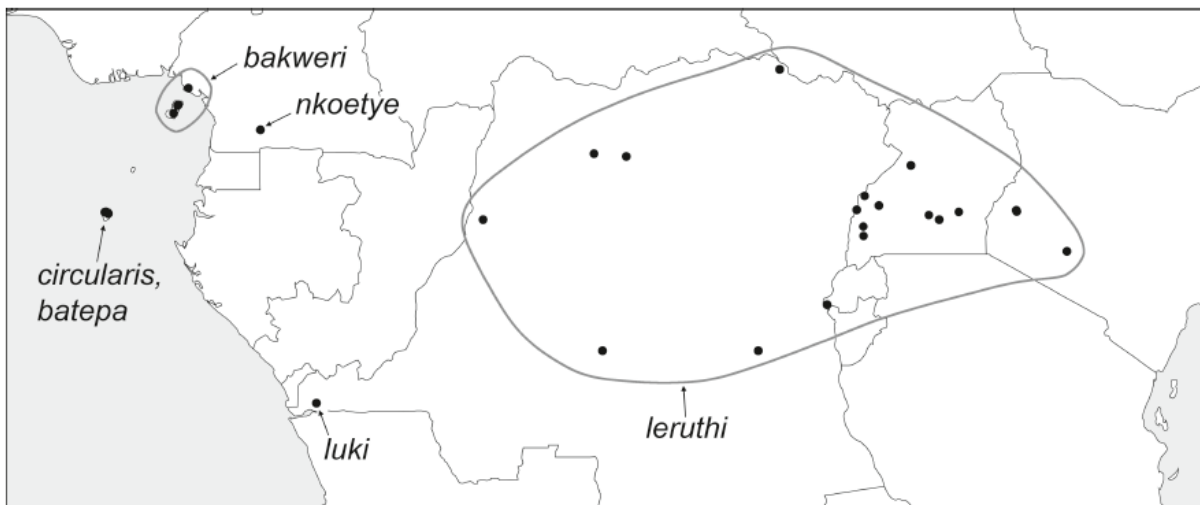


FIG. 987. Known distribution of the *Pholcus circularis* species group.

Pholcus luki n. sp.

Figs. 912, 913, 934, 935, 1017-1021

Type. Male holotype from Congo Dem. Rep., Kongo Centrale Prov., Mayombe, Luki Forest Reserve (5°37.3'S, 13°05.9'E), central zone, by hand, 26.-27. ix.2007 (W. Hubau), in MRAC (separated from 222155).

Etymology. The specific name is a noun in apposition, derived from the type locality.

Diagnosis. Distinguished from congeners by shapes of procurus, appendix, and uncus (Figs. 1017, 1018), by male cheliceral armature (Fig. 1019), and female genitalia (Figs. 934, 1020); from similar *Ph. leruthi* also by relatively larger male palpal femur (Fig. 1018) and hair brush medially on carapace (Fig. 912).

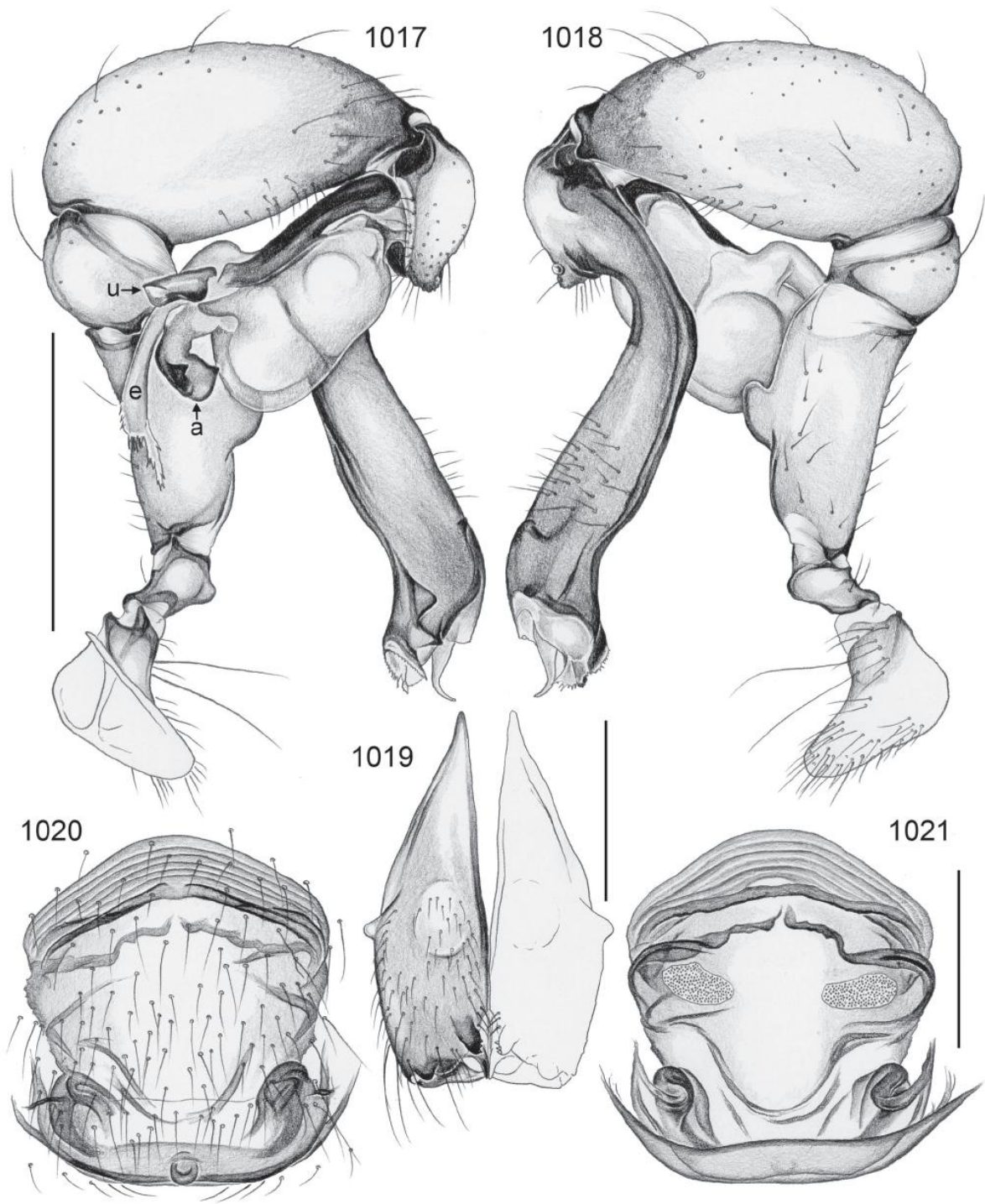


FIG. 1017-1021. *Pholcus luki*. 1017, 1018. Left male palp, prolateral and retrolateral views. 1019. Male chelicerae, frontal view. 1020, 1021. Cleared female genitalia, ventral and dorsal views. Scale lines: 1.0 (1017, 1018), 0.5 (1019-1021).

Male (holotype). Total body length 6.6, carapace width 1.85. Leg 1: 12.9 + 0.8 + 12.8 + 22.4, tarsus missing, tibia 2: 8.8, tibia 3: 5.7, tibia 4: 8.0, tibia 1L/d: 66. Habitus similar to *Ph. leruthi* (cf. Figs. 910 and 911). Carapace pale ochre-whitish with large median brown mark, ocular area with darker median band, clypeus not darkened, sternum whitish, only anteriorly and posteriorly light brown marks, legs ochre-yellow with darker rings on femora and tibiae subdistally and in patella area, tips of femora and tibiae whitish, abdomen ochre-gray, dorsally and laterally many internal black spots visible through cuticle, ventrally without pattern (cf. female, Fig. 913). Distance PME-PME 425 μ m, diameter PME 170 μ m, distance PME-ALE 70 μ m, distance AME-AME 75 μ m, diameter AME 95 μ m. Ocular area elevated, each triad on short hump directed laterally, with many stronger hairs posteriorly on ocular area and unique brush medially on carapace (Fig. 912). No thoracic furrow; clypeus unmodified. Chelicerae as in Fig. 1019, distal apophyses with two (or three?) modified hairs each, proximal lateral apophyses indistinct, frontally with lighter area. Sternum wider than long (1.15/0.90), unmodified. Palps as in Figs. 1017 and 1018, coxa unmodified, trochanter with very short retrolatero-ventral apophysis, femur with distinctive ventral protuberance, tibia large, distally darkened, procurus long and mostly simple except distally, retrolateral hairs unusually short, bulb slightly elongated, with very large proximal sclerite, long weakly sclerotized embolus, small simple uncus and larger distinctive appendix. Legs without spines and curved hairs, few vertical hairs. Retrolateral trichobothrium on tibia 1 at 5%; prolateral trichobothrium absent on tibia 1, present on other tibiae; tarsal pseudosegments (tarsus 2) distally fairly distinct.

Female. In general similar to male but triads closer together (distance PME-PME 275 μ m), without brushes of hairs on ocular area and carapace. Tibia 1 missing in all three females. Epigynum a large rectangular area of same coloration as abdomen, only posteriorly very narrow sclerite and small 'knob', anterior internal structures visible through cuticle (Figs. 934, 1020); internal genitalia as in Figs. 935 and 1021.

Distribution. Known from type locality only (Fig. 987). Note that some females from northwestern Congo Dem. Rep. tentatively assigned to *Ph. leruthi* (see above) may actually belong to this species.

Material examined. CONGO DEM. REP.: *Kongo Centrale Prov.*: Mayombe, Luki F.R.: ♂ holotype

above, together with 1♀; Luki Forest Reserve, "fogging 3, primary rainforest", 10.xi.2006 (D. de Bakker, J.P. Michiels), 2♀ in MRAC (separated from 219853).