

***Pholcus satun* Huber, 2011**

Huber, B. A. 2011. Revision and cladistic analysis of *Pholcus* and closely related taxa (Araneae, Pholcidae). Bonner zool. Monographien 58: 1-510.

p. 127



515, 516. *Ph. satun*, male,

dorsal and lateral views.

p. 129

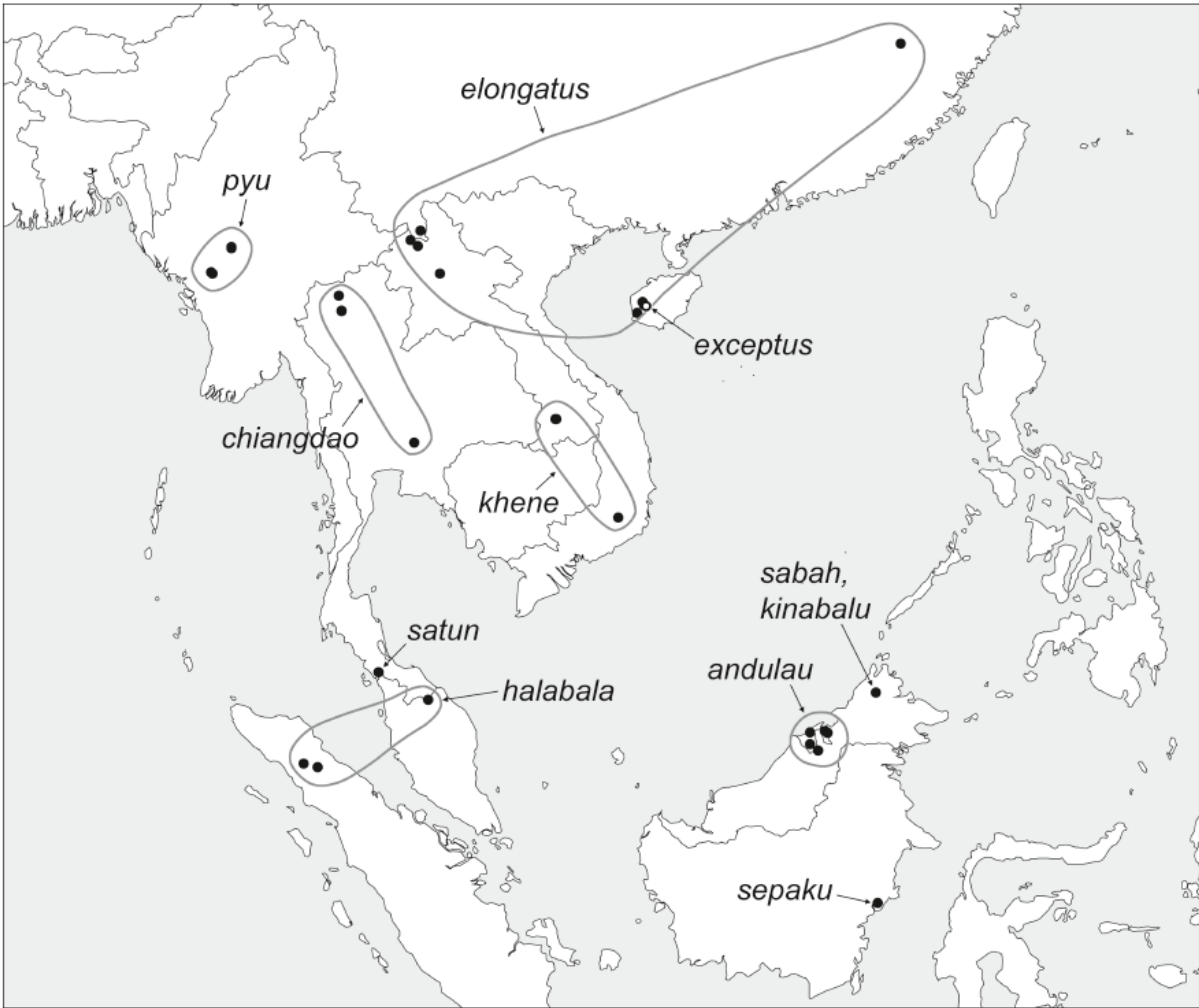


FIG. 529. Known distribution of the *Pholcus halabala* species group.

270 m a.s.l., 15.-18.x.2003 (ATOL Expedition 2003), in MACN.

Etymology. The specific name is a noun in apposition, derived from the type locality.

Diagnosis. Easily distinguished from most congeners by unmodified male chelicerae (Fig. 582); also by long sickle-shaped bulbal process (Fig. 580) and shape of procurus (Fig. 581).

Male (holotype). Total body length 3.3, carapace width 0.8. Leg 1: 33.9 (8.1 + 0.3 + 8.1 + 15.7 + 1.7), tibia 2: 5.1, tibia 3: 3.0, tibia 4: 4.7; tibia 1 L/d: 114. Habitus as in Figs. 515 and 516. Carapace ochre-yellow with brown V-mark posteriorly, ocular area brown, clypeus not darkened, sternum whitish, legs pale ochre-yellow, patellae and tibia-metatarsus joints brown, abdomen pale ochre-gray, with very indistinct darker marks latero-dorsally, ventrally monochromatic. Distance PME-PME 320 μ m, diameter PME 90 μ m, distance PME-ALE 35 μ m, distance AME-AME 25 μ m, diameter AME 15 μ m. Ocular area slightly elevated, each triad on short stalk. No thoracic furrow; clypeus unmodified. Chelicerae unmodified (Fig. 582). Sternum wider than long (0.6/0.5), unmodified. Palps as in Figs. 580 and 581, coxa unmodified, trochanter with long, terminally bifid ventral apophysis, femur only slightly widened, procurus long, S-shaped, with ventral pointed process but rather simple, bulb with only one process (embolus?), sclerotized and dorsally provided with small scales. Legs without spines and curved hairs, few vertical hairs; retrolateral trichobothrium on tibia 1 at 3%; prolateral trichobothrium absent on tibia 1, present on other tibiae. Tarsal pseudosegments fairly distinct distally.

Female. Unknown.

Distribution. Known from type locality only (Fig. 529).

Material examined. THAILAND: *Satun Prov.*: Thale Ban National Park: ♂ holotype above; same data, 1♂ in MACN.

Pholcus satun n. sp.

Figs. 515, 516, 580-582

Type. Male holotype from Thailand, Satun Prov., Thale Ban National Park (6°42.6'N, 100°10.2'E),

521, 522. *Ph. andulau*.

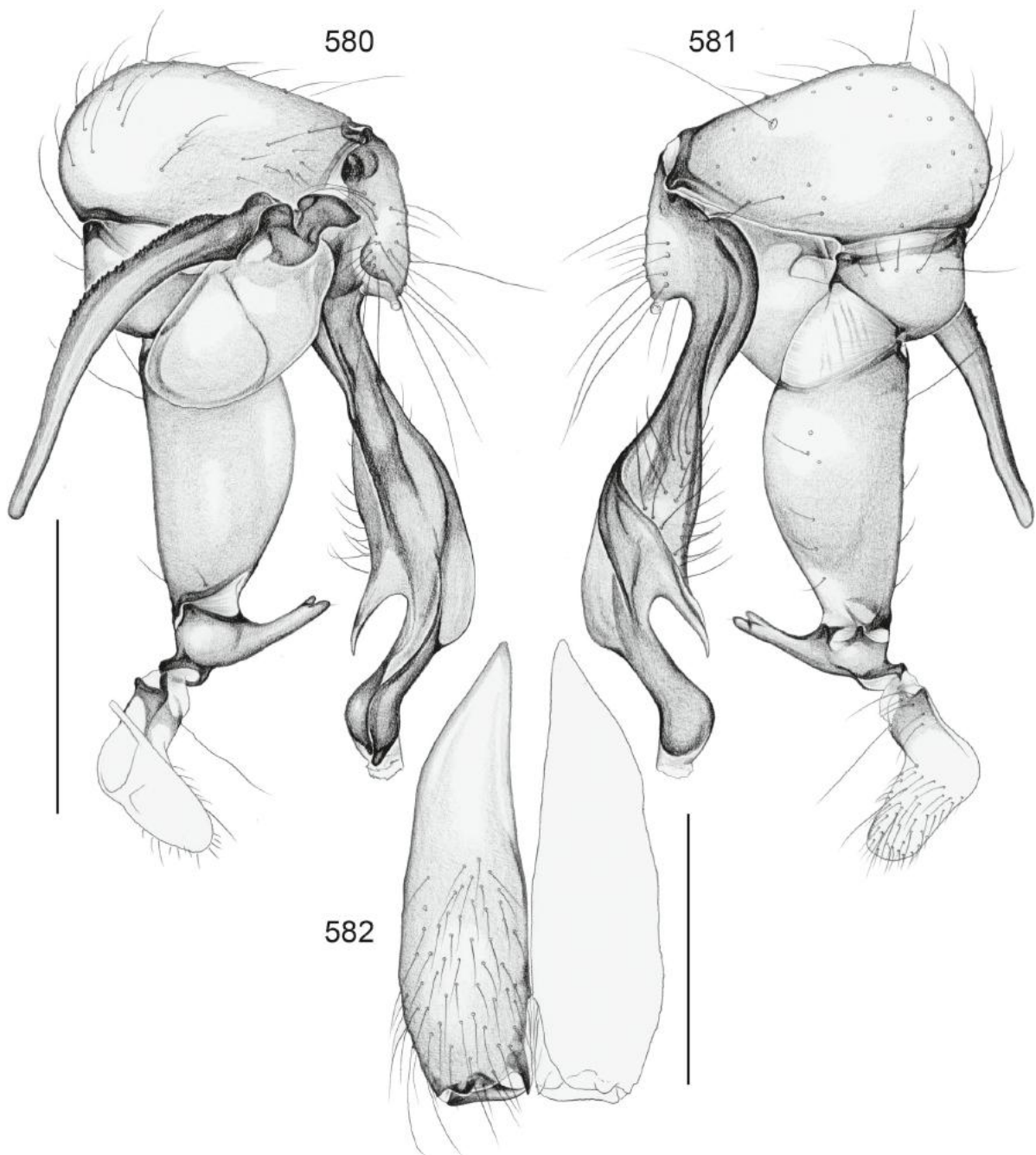


FIG. 580-582. *Pholcus satun*. 580, 581. Left male palp, prolateral and retrolateral views. 582. Male chelicerae, frontal view. Scale lines: 0.5 (580, 581), 0.3 (582).