

***Pholcus sudhami* Huber, 2011**

**Huber, B. A. 2011.** Revision and cladistic analysis of *Pholcus* and closely related taxa (Araneae, Pholcidae). *Bonner zool. Monographien* 58: 1-510.

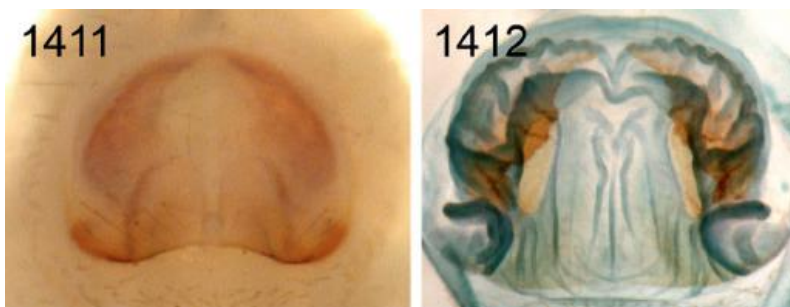
p. 281



1380-1382. *Ph. sudhami*, dorsal and lateral views; female

abdomen, ventral view.

p. 282



1411, 1412. *Ph. sudhami*.

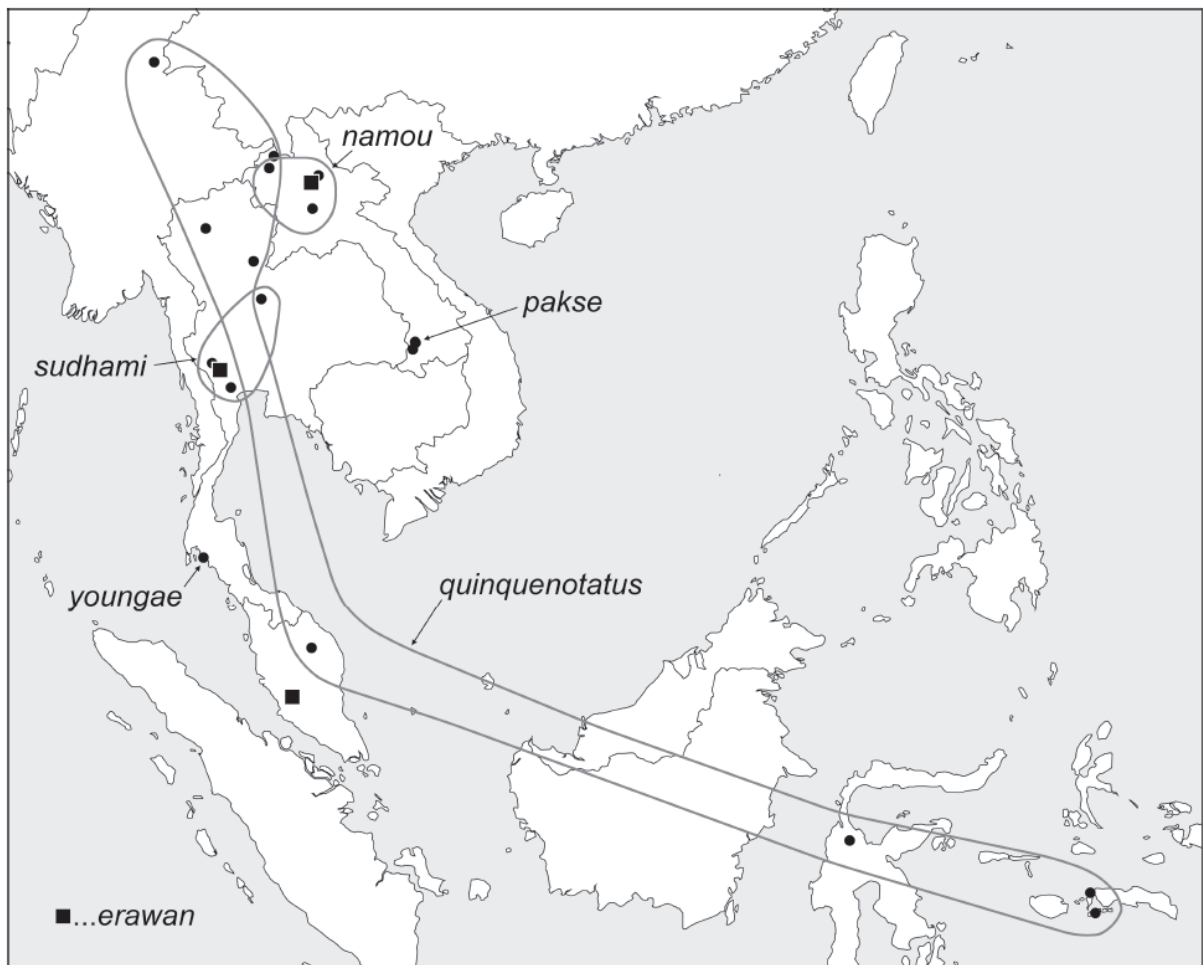


FIG. 1445. Known distribution of the *Pholcus quinquenotatus* species group.

*Pholcus sudhami* n. sp.

Figs. 1380-1382, 1411, 1412, 1476-1480

*Type.* Male holotype from Thailand, Kanchanaburi Prov., Erawan Waterfalls N.P. [14°23.7'N, 99°08.2'E], evergreen forest, under bark, 15./16.iii.1986 (C.L. & P.R. Deeleman), in RMNH.

*Etymology.* Named for Thai writer Pira Sudham.

*Diagnosis.* Easily distinguished from most congeners by male palpal morphology (Figs. 1476, 1477; distinctive procurus with large membranous structure, absence of appendix) and female genitalia (Figs. 1411, 1479, 1480; elongate pore plates and shapes of other internal structures; very similar to *Ph. pakse*); from *Ph. pakse* only by male embolus without spines (cf. Fig. 1481).

*Male* (holotype). Total body length 4.7, carapace width 1.2. Leg 1 missing, tibia 2: 6.5, tibia 3: 3.9, tibia 4: 5.4. Habitus as in Figs. 1380 and 1381. Carapace pale ochre-yellow with distinct mark posteriorly, ocular area light brown except medially, clypeus light brown, sternum whitish with small light brown marks near bases of coxae 2-4, legs pale ochre-yellow, patellae and

tibia-metatarsus joints brown, abdomen ochre-gray, with some indistinct darker and whitish spots dorsally, ventrally monochromous (cf. female, Fig. 1382). Distance PME-PME 205 µm, diameter PME 100 µm, distance PME-ALE 35 µm, distance AME-AME 45 µm, diameter AME 55 µm. Ocular area slightly elevated. No thoracic furrow; clypeus unmodified. Chelicerae as in Fig. 1478, with distal apophyses provided with modified hairs, two pairs of proximal apophyses. Sternum wider than long (0.80/0.65), unmodified. Palps as in Figs. 1476 and 1477, coxa unmodified, trochanter with straight ventral apophysis, femur with low humps proximo-dorsally and retrolaterally, distally widened, procurus with large dorsal protrusion distally, large prolatero-ventral area set with transparent scales, bulb with uncus, long partly sclerotized embolus, without appendix.

*Variation.* Leg 1 in other male from type locality: 9.6 + 0.5 + 9.5 + 17.9, tarsus missing, tibia 2: 6.4; tibia 1 L/d: 89. Legs without spines and curved hairs, few vertical hairs; retrolateral trichobothrium on tibia 1 at 5%; prolateral trichobothrium absent on tibia 1, present on other tibiae. Tibia 1 in male from Thung Salaeng Luang: 14.5; male from Tham Phraya Prap: 9.8.

*Female.* In general similar to male but triads closer together (distance PME-PME 185 µm); clypeus pale ochre-yellow. Tibia 1 in 3 females: 7.3, 7.4, 8.0. Epigynum large semicircular plate with pale 'knob' posteriorly (Figs. 1411, 1479); internal genitalia as in Figs. 1412 and 1480.

*Distribution.* Known from three localities in Thailand (Fig. 1445).

*Material examined.* THAILAND: *Kanchanaburi Prov.*: Erawan Waterfalls N.P.: ♂ holotype above, together with 1♂4♀ in RMNH. *Phitsanoluk Prov.*: Thung Salaeng Luang [-16.5°N, 100.75°E], 550 m a.s.l., in cave, 25.viii.1987 (H. Ono), 1♂ 2 juvs. in NSMT (Ar 7866). *Ratchaburi Prov.*: Amphoe Muang Ratburi, Ban Huay Ta Kaeng, Tham Phraya Prap (13°35'N, 99°45'E), 26.viii.1981 (F.D. Stone), 1♂ in RMNH.

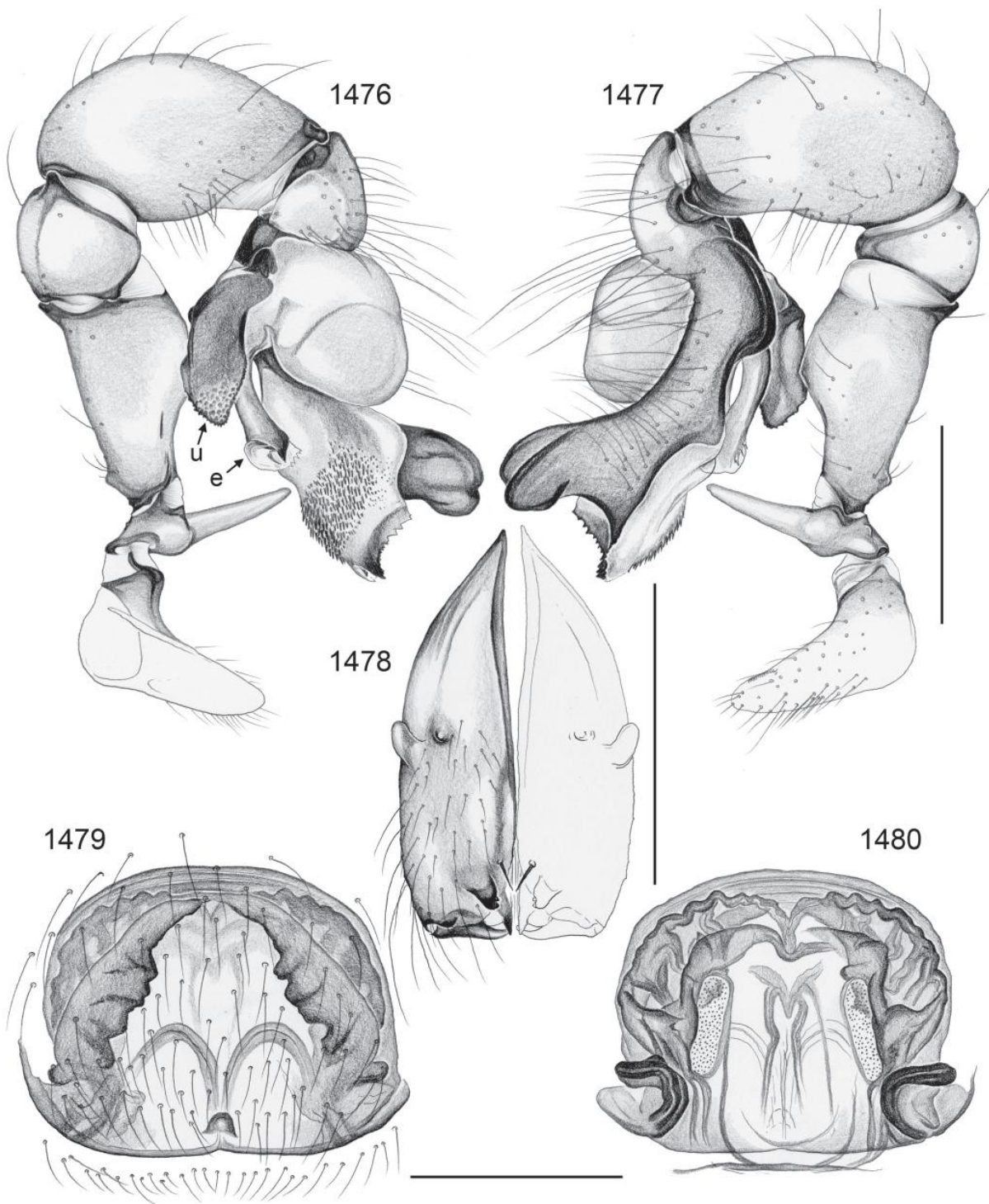


FIG. 1476-1480. *Pholcus sudhami*. 1476, 1477. Left male palp, prolateral and retrolateral views. 1478. Male chelicerae, frontal view. 1479, 1480. Cleared female genitalia, ventral and dorsal views. Scale lines: 0.5.