

***Pholcus wahehe* Huber, 2011**

Huber, B. A. 2011. Revision and cladistic analysis of *Pholcus* and closely related taxa (Araneae, Pholcidae). *Bonner zool. Monographien* 58: 1-510.

p. 226



1072-1074. *Ph. wahehe*, male, dorsal and lateral views; male abdomen, ventral view.

p. 242

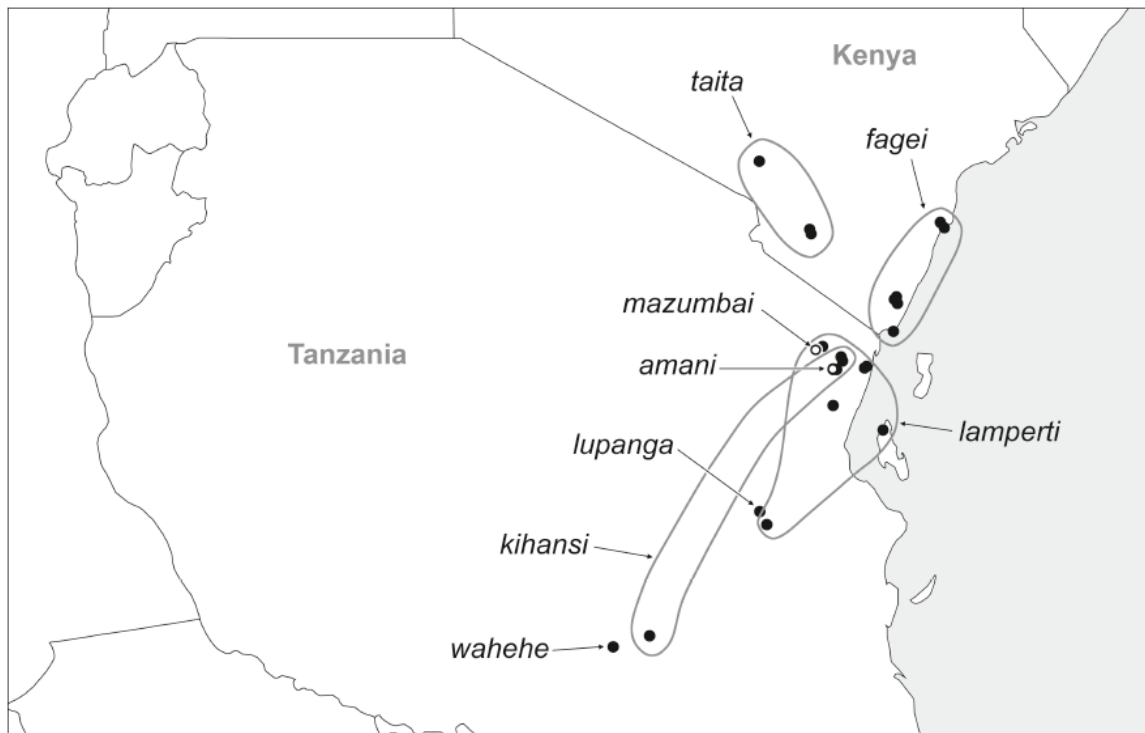


FIG. 1162. Known distribution of the *Pholcus lamperti* species group.

Pholcus wahehe n. sp.

Figs. 1072-1074, 1238-1241

Type. Male holotype from Tanzania, Iringa Region, Mufindi Distr., Uzungwa Scarp Forest Reserve (8°31.6'S, 35°54.0'E), 750 m a.s.l., "canopy fog 36-AI", 7.iii.1996 (Mc Kamey *et al.*), in ZMUC.

Etymology. Named for the Hehe (Swahili collective: Wahehe), an ethnic and linguistic group based in the Iringa Region in south-central Tanzania; noun in apposition.

Diagnosis. Easily distinguished from congeners by male palpal morphology (Figs. 1238-1240; distinctive procurus shape and bulbal processes), and long distal male cheliceral apophyses (Fig. 1241).

Male (holotype). Total body length 6.2, carapace width 1.5. Leg 1: 42.8 (10.8 + 0.7 + 10.3 + 18.6 + 2.4), tibia 2: 7.3, tibia 3: 4.9, tibia 4: 6.6; tibia 1 L/d: 65. Habitus as in Figs. 1072 and 1073. Carapace pale ochre-yellow with large brown median mark and lateral margins, ocular area also brown, especially medially, clypeus not darkened, sternum medially brown with light spots, legs ochre-yellow, patellae and tibia-metatarsus joints brown, femora and tibiae with subdistal darker rings and lighter tips, abdomen ochre-gray with brown pattern dorsally, ventrally posterior half of brown band Y-shaped (Fig. 1074). Distance PME-PME 335 μ m, diameter PME 135 μ m, distance PME-ALE 45 μ m, distance AME-AME 85 μ m, diameter AME 85 μ m. Ocular area elevated, some stronger hairs on posterior side. No thoracic furrow; clypeus unmodified. Chelicerae as in Fig. 1241, with unusually long distal apophyses with modified hairs, frontal and lateral apophyses proximally. Sternum wider than long (0.95/0.75), unmodified. Palps as in Figs. 1238 and 1239, coxa unmodified, trochanter with slightly curved tapering retrolatero-ventral apophysis, femur proximally narrow, distally widening, procurus relatively simple, widely curved (Fig. 1240), distally narrow whitish area, bulb with small unculus (homology uncertain), weakly sclerotized embolus with two terminal transparent tips, complex appendix with several processes.

Legs without spines and curved hairs, few vertical hairs; retrolateral trichobothrium on tibia 1 at 5%; prolateral trichobothrium absent on tibia 1, present on other tibiae; many tarsal pseudosegments, but only distally a few fairly distinct.

Variation. Tibia 1 in 2 other males: 9.4, 11.5.

Female. Unknown.

Distribution. Known from type locality only (Fig. 1162).

Material examined. TANZANIA: *Iringa Region:* Mufindi Distr., Uzungwa Scarp Forest Reserve: ♂ holotype above; same data but "canopy fog 36-FN", 1♂ in ZMUC; same data but 8.iii. and 16.iii.1996, "canopy fog 37-CM", "canopy fog 39-BD", 2♂ (2 vials) in ZMUC.

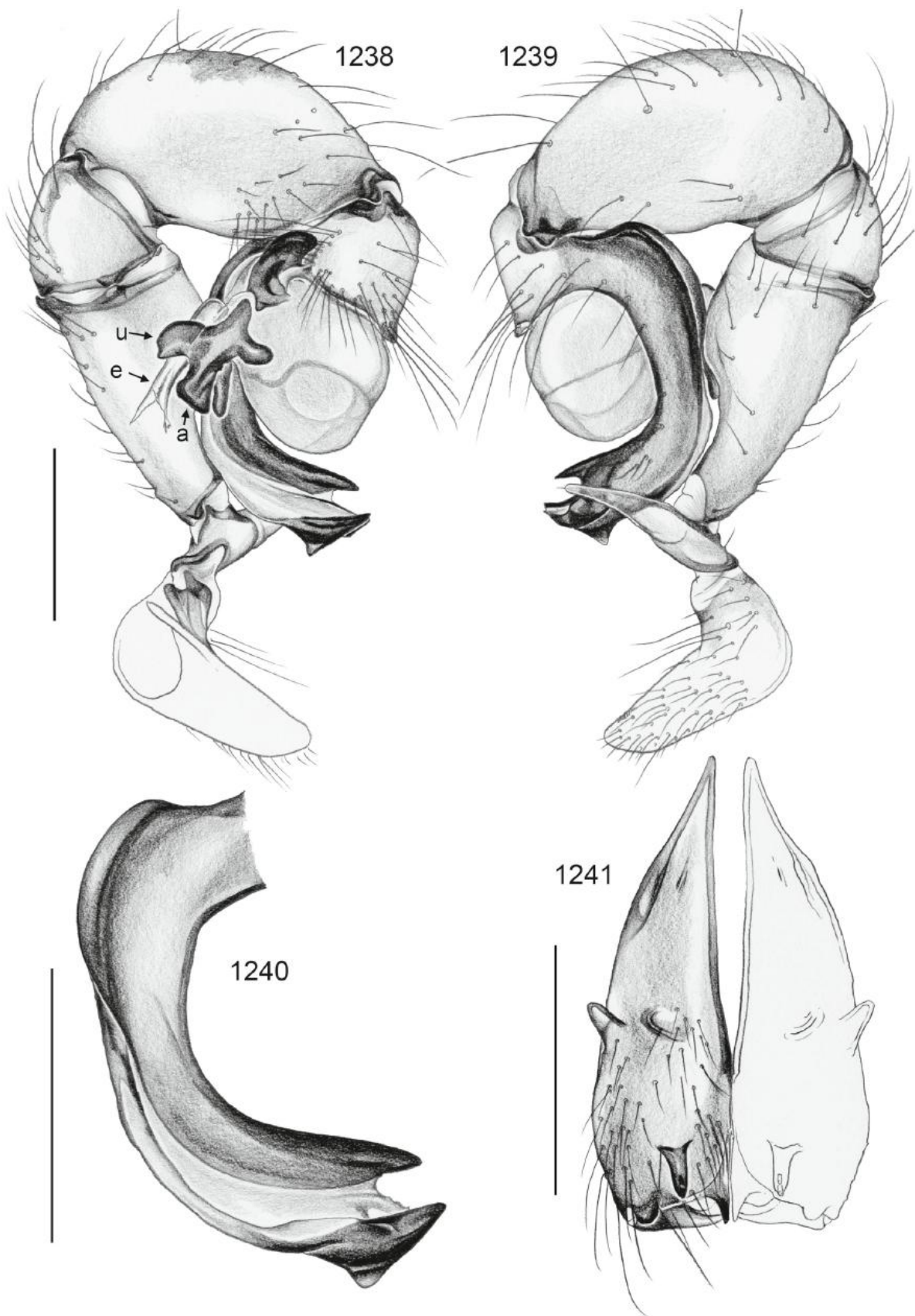


FIG. 1238-1241. *Pholcus wabebe*. 1238, 1239. Left male palp, prolateral and retrolateral views. 1240. Left procurrus, prolateral view. 1241. Male chelicerae, frontal view. Scale lines: 0.5.