

***Smeringopus ndumo* Huber, 2012**

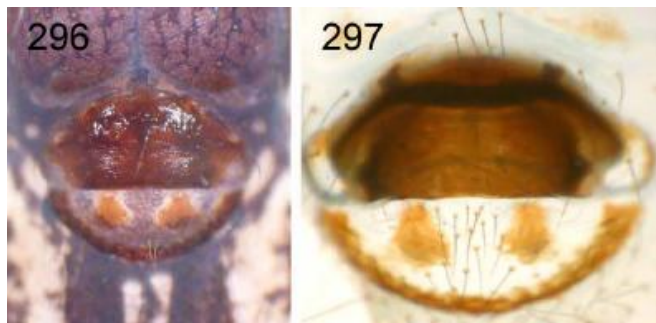
Huber, B. A. 2012. Revision and cladistic analysis of the Afrotropical endemic genus *Smeringopus* Simon, 1890 (Araneae: Pholcidae). *Zootaxa* 3461: 1-138.

p. 47



FIGURES 268–277. *Smeringopus natalensis* group, left male palps, prolateral and retrolateral views. 276–277. *S. ndumo*.

p. 48



FIGURES 278–297. *Smeringopus natalensis* group, epigyna, ventral views and cleared female genitalia, dorsal views. 296–297. *S. ndumo*.

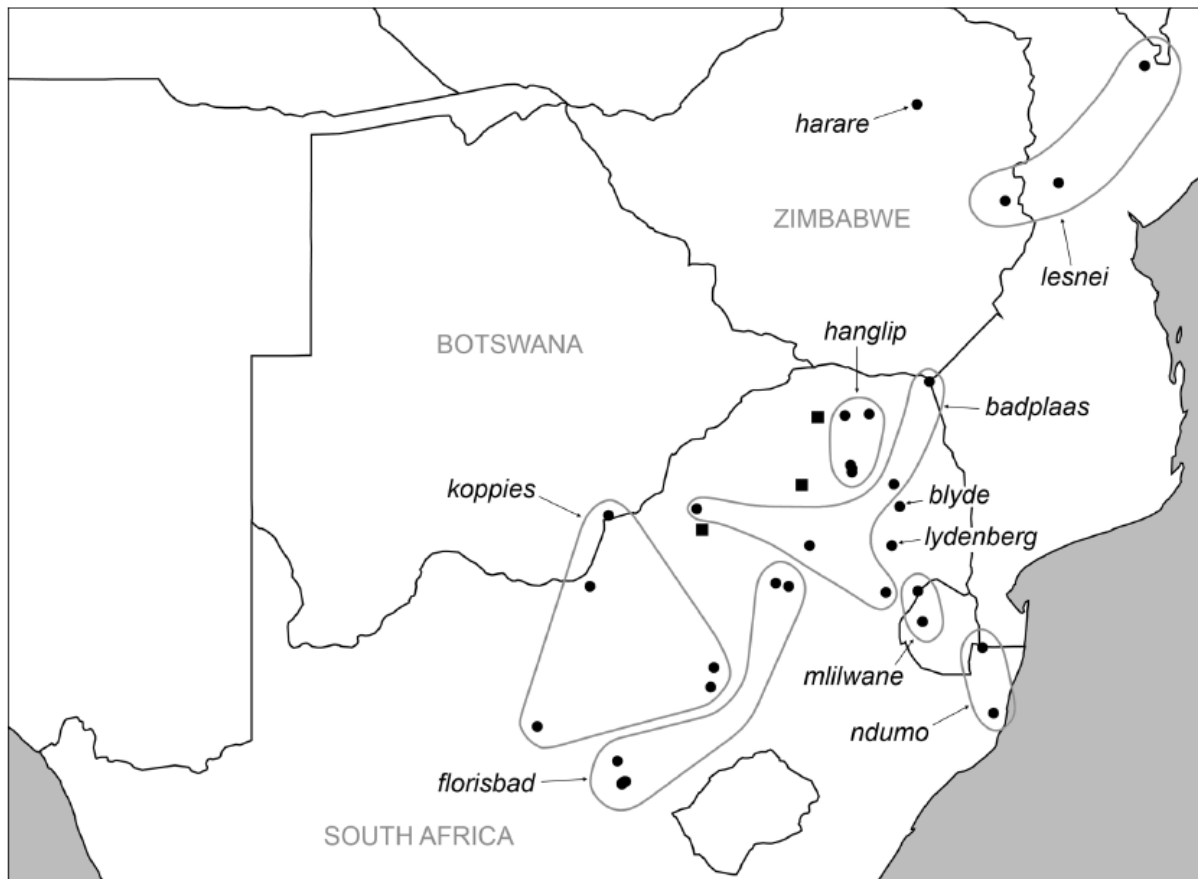


FIGURE 299. Known distribution of the *natalensis* group except *S. natalensis* (cf. Fig. 298). Squares: further undescribed species.

***Smeringopus ndumo* new species**

Figs. 276–277, 296–297, 367–371

Type. Male holotype from South Africa, KwaZulu-Natal, Ndumo Game Reserve (26°52.7'S, 32°11.1'E), *Acacia tortilis* savanna, under logs, 19.vi.2005 (C. Haddad), in NCP.

Etymology. The name is a noun in apposition, derived from the type locality.

Diagnosis. Distinguished from similar congeners (*S. hanglip*, *S. lydenberg*, *S. mliiwane*) by shapes of bulbal processes (Figs. 369, 370); from *S. hanglip* and *S. lydenberg* also by three black lines ventrally on abdomen (versus two; median line narrow); from other close relatives by process near palpal tarsal organ (Fig. 367), ventrally strongly curved procurus (Figs. 277, 367), and prolateral process on procurus tip (Fig. 368).

Male (holotype). Total body length 7.3, carapace width 2.4. Leg 1: 52.0 (13.5 + 0.9 + 13.1 + 22.0 + 2.5), tibia 2: 9.2, tibia 3: 6.9, tibia 4 missing; tibia 1 L/d: 56. Habitus similar *S. koppies* (cf. Fig. 245). Carapace ochre-yellow with distinct dark pattern (median and lateral bands, two pairs of submarginal marks), clypeus with pair of dark stripes, sternum mostly light brown with black pattern posteriorly, legs with darker rings subdistally on femora and tibiae, abdomen dorsally with distinct dark pattern, ventrally with three dark lines in median part (median line narrow). Distance PME-PME 160 µm, diameter PME 185 µm, distance PME-ALE 90 µm, distance AME-AME 35 µm, diameter AME 155 µm. Ocular area slightly elevated, secondary eyes with indistinct 'pseudo-lenses'; deep thoracic pit. Chelicerae very similar *S. hanglip* (cf. Figs. 340, 341; just slightly smaller). Palps as in Figs. 276 and 277, coxa without retrolateral apophysis, trochanter barely modified, femur with deep and wide retrolateral furrow

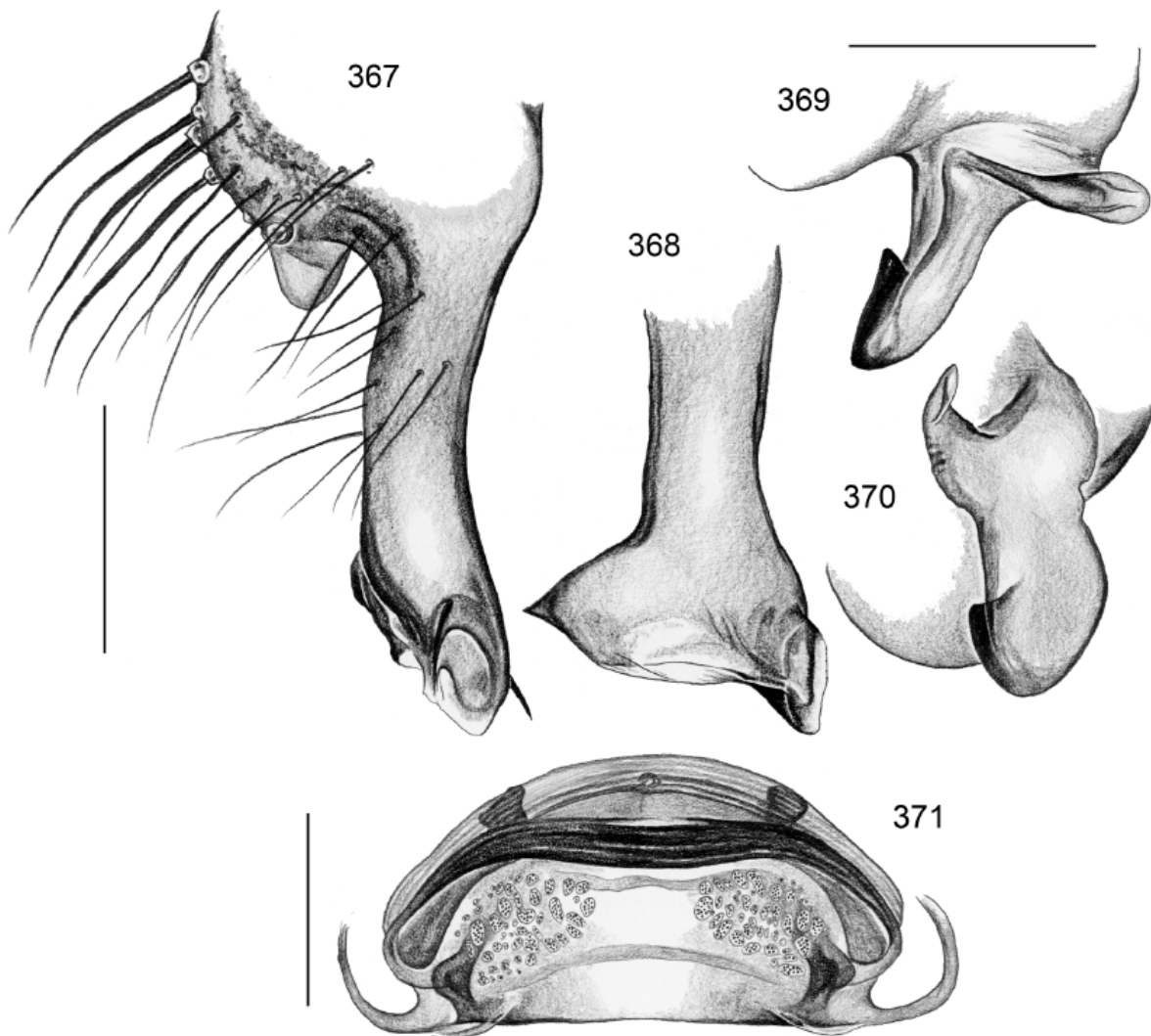
with distinct rim proximally, cymbium with distinct projection near tarsal organ (Fig. 367), procurvus ventrally strongly curved (Figs. 277, 367), with prolateral process at tip (Fig. 368), bulb with two distinctively shaped processes (Figs. 369, 370). Legs without spines, few vertical hairs, with curved hairs on tibiae and metatarsi 1 and 2, retrolateral trichobothrium on tibia 1 at 3.5%; prolateral trichobothrium present on tibia 1.

Variation. Tibia 1 in 2 other males: 9.7, 10.6. In one male from False Bay Park (the smaller one) the color pattern is generally simpler and more irregular.

Female. In general similar to male; tibia 1 in 7 females: 9.3–12.8 (mean 10.6). Epigynum a simple plate without pockets (Fig. 296), slightly variable in shape even among specimens from type locality; internal genitalia as in Figs. 297 and 371.

Distribution. Known from two localities in eastern South Africa (Fig. 299).

Material examined. SOUTH AFRICA: *KwaZulu-Natal*: Ndumo Game Reserve: 1♂ holotype above; same data, 6♀ in NCP. Ndumo Game Reserve, sand forest, SE boundary fence, under logs, 9.ii.2005 (C. Haddad), 1♀ in NCP. Ndumo Game Reserve, 18.i.–14.ii.2005 (F. Stahlavsky), 1♂ in pure ethanol in ZFMK (Kral 6) (J. Kral chromosome preparation). False Bay Park (27°58'S, 32°22'E), 28.i.2004 (collector not given), 1♂ in NCP (2004/1156); same data but 9.ii.2004, 1♂1♀ in NCP (2004/1152 part); same data but 24.xi.2003, 1♀ in NCP (2004/1154).



FIGURES 367–371. *Smeringopus ndumo*. 367. Left cymbium and procurvus, retrolateral view. 368. Left procurvus, dorsal view. 369–370. Left bulbal processes, prolateral and dorsal views. 371. Cleared female genitalia, dorsal view. Scale lines: 0.3 mm.