

Trichocyclus pustulatus Deeleman-Reinhold, 1995

Deeleman-Reinhold, C. L. 1995. Redescription of *Holocneminus multiguttatus* Simon and description of two new species of pholcid spiders from Australia. Beitr. Araneol. 4: 31-41.

p. 36

Trichocyclus pustulatus sp. nov. (figs.9-15)

Holotype: ♂, Australia, N. Queensland, Mareeba, July 1992, J.WUNDERLICH leg. Paratype: One female, same data (both Queensland Museum, Brisbane). Other examined material: Queensland, Chillagoe, 1 female, under stone, August 1992, J.WUNDERLICH (Collection DEELEMAN).

Diagnosis: Characterized at first sight by the small dimensions and the chitinous pustules seen all over the body. Furthermore, males can be distinguished from the other hitherto described Trichocyclus species by the shape of the chelicerae and the palp. Epigyne provided with a long postgenital plate.

Description: Male. Measurements in mm: holotype: total length 2.60, carapace 1.60 long, 1.60 wide, width eye region 0.56, abdomen 1.52 long. Legs:

	femur	patella	tibia	metatarsus	tarsus	total
I	7.80	0.60	8.70	10.80	1.68	29.58
II	6.10	0.60	6.80	8.40	1.16	23.06
III	4.80	0.50	3.68	5.75	0.80	15.35
IV	missing					
palp	1.00	0.27	0.50		0.20	bulb 0.40
embolus	0.35					

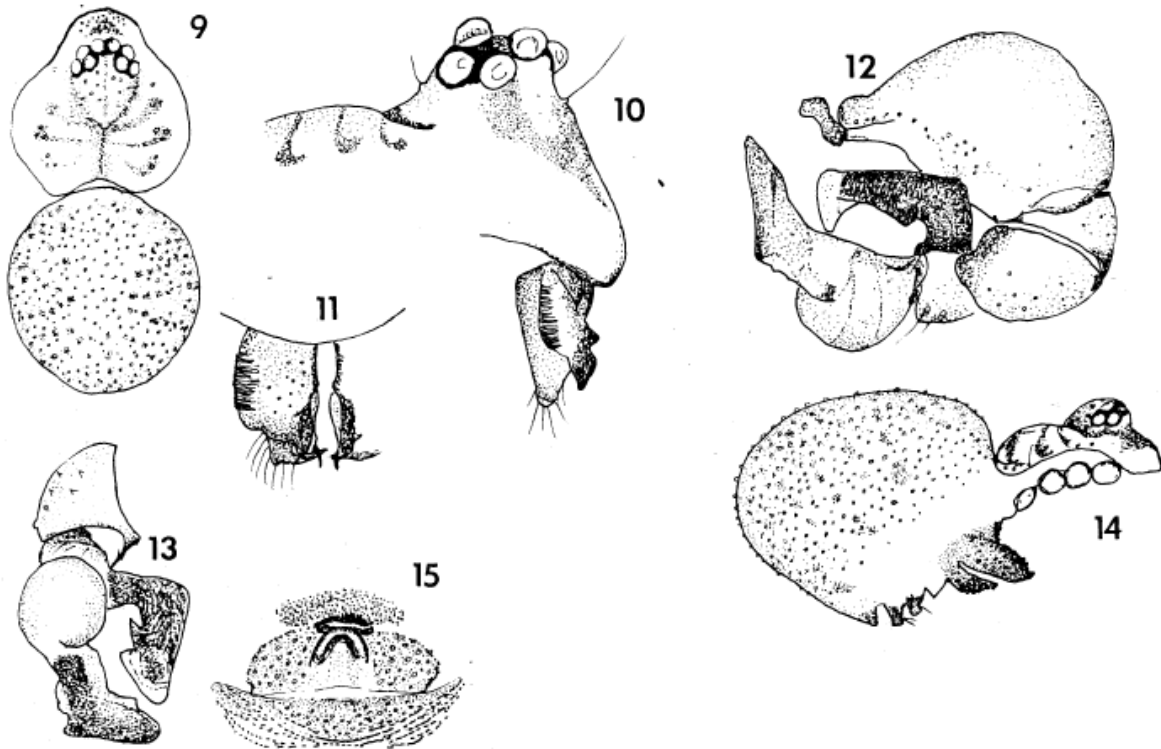
Carapace and abdomen milky white with yellow-brown pattern as in fig.9, legs slightly darker, all femora and tibiae with dark subapical and white apical band; sternum and anterior part of venter dark with white specks. Abdomen with rows of black blotches. Head slightly raised above thorax (fig.10), posterior eyes recurved; PME 2 diameters apart. Whole body, including legs and palps, covered with tiny conical chitinous elevations, particularly conspicuous on the abdomen. Chelicerae (figs.10,11) with an anterior chitinous swelling, bearing stridulatory files and mesally a dark ridge, covering proximal two thirds of basal segment and which ends in a ventrally projected apophysis. No long stiff straight hair on the legs. Palp figs.12,13.

Female. Measurements in mm: total length 3.20, carapace 1.40 long, 1.60 wide, width eye region 0.68, abdomen 2.00 long. Legs:

	femur	patella	tibia	metatarsus	tarsus	total
I	6.60	0.38	7.10	8.80	1.18	24.06
II	5.15	0.38	4.80	6.50	1.05	17.88
III	3.76	0.38	3.12	-	-	-
IV	5.60	0.38	4.50	6.40	1.04	17.92

Colouring and markings as in the male. Chelicerae without transformations and without stridulatory files. Head level with thorax (fig.14). Epigyne: pre-genital plate elevated in the middle into a central arched projection (figs.14,15); post-genital strip wider than pre-genital plate and as high, flat; both plates covered with tiny pustulations.

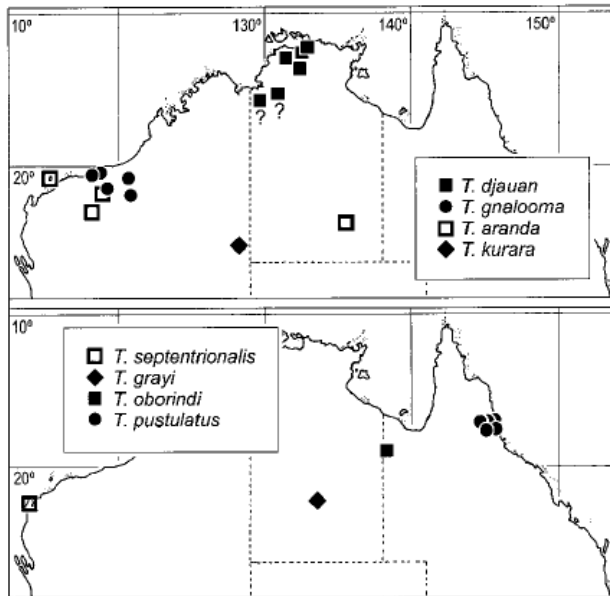
Distribution: Queensland: Table Lands.



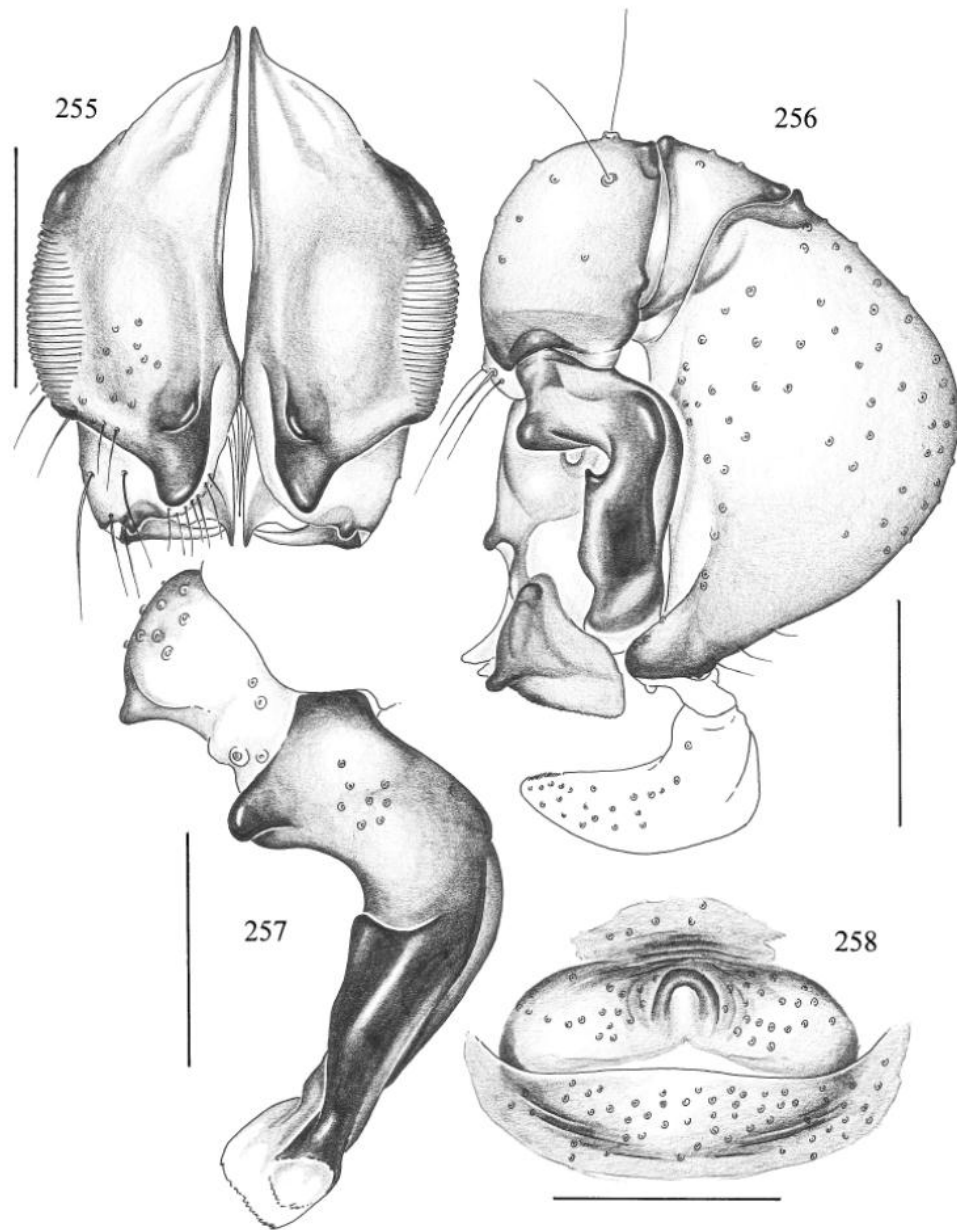
Figs.9-15. Trichocyclus pustulatus n.sp. 9) ♂, dorsal, 10) id., head with chelicera, lateral, 11) chelicerae, frontal, 12) right palp, lateral, 13) right palp, cymbium, bulb and embolus, mesal, 14) ♀, lateral, 15) epigyne, ventral.

Huber, B. A. 2001. The pholcids of Australia (Araneae; Pholcidae): Taxonomy, biogeography, and relationships. Bull. Amer. Mus. Nat. Hist. 260: 1-144.

p. 78



Maps 11, 12. Distribution of *Trichocyclus* species: *aranda* group (map 11, top), and *T. septentrionalis* and *pustulatus* group (map 12, bottom).



Figs. 255–258. *Trichocyclops pustulatus*. 255. Male chelicerae, frontal view. 256. Left male palp, retrolateral view. 257. Left cymbium and procurus, retrolaterodorsal view. 258. Epigynum, ventral view. Scale lines: 0.5 mm (256, 258), 0.3 mm (255, 257).

Trichocyclus pustulatus
Deeleman-Reinhold, 1995

Figures 255–258

Trichocyclus pustulatus Deeleman-Reinhold,
1995: 36–37, figs. 9–15.

TYPES: Male holotype and female paratype from Mareeba (17°00'S, 145°25'E), Queensland, Australia; July–Aug. 1992 (J. Wunderlich), in QMB (S51023–4), examined; and one additional female paratype from Chillagoe (17°09'S, 144°32'E), Queensland, Aug. 1992 (J. Wunderlich), under stone, in QMB (S51025), examined.

DIAGNOSIS: Similar to *T. oborindi* and *T. aranda*, distinguished by the apophyses on the male chelicerae (distal pair shorter, proximal pair more distal; fig. 255), and by the slightly different male cymbium and procurus (fig. 256).

MALE (holotype): Total length ~2.7 (opisthosoma deformed), carapace width 1.48. Leg 1: 7.9 + 0.6 + 8.0, metatarsus and tarsus missing, tibia 2: 5.7, tibia 3: 3.5, tibia 4 missing; tibia 1 l/d: 57. Habitus and prosoma shape similar to *T. nullarbor* (cf. figs. 186–189); carapace pale ochre with darker spot behind ocular area and black line in thoracic furrow, with three pairs of light brown lateral spots. Ocular area pale ochre with darker median line; distance PME-PME 0.175; diameter PME 0.120; distance PME-ALE 0.055; diameter AME 0.135. Clypeus pale ochre with brown mark; sternum light brown with many yellowish speckles. Chelicerae brown with black, frontal apophyses, and stridulatory ridges (fig. 255). Palps as in fig. 256, with small but distinct ventrodistal hump on femur (smaller than in *T. harveyi*, cf. fig. 277); procurus as in fig. 257. Legs light ochre-yellow, with dark rings on femora (subdistally), patellae + tibiae proximally, and tibiae subdistally; tips of femora and tibiae whitish; legs apparently without spines, without curved and vertical hairs (most hairs missing); retrolateral trichobothrium of tibia 1 at 15%. Opisthosoma deformed, but apparently similar to *T. nullarbor* (cf. fig. 186; see also original illustrations by Deeleman-Reinhold, 1995), ochre-gray, with blackish and white spots dorsally.

FEMALE: Very similar to male; epigynum as in fig. 258. Opisthosoma dorsofrontally

without humps. Tibia 1 in two females: 4.7, 6.8.

DISTRIBUTION: Known from several localities in northern Queensland (map 12).

MATERIAL EXAMINED: AUSTRALIA: *Queensland:* Mareeba: Male holotype and female paratype above; Chillagoe: female paratype above; Chillagoe, Apr. 25, 1978 (R. Raven, V. E. Davies), 1 ♀ (QMB S50271), assigned tentatively; Wolfram (17°05'S, 144°57'E), Feb. 13, 1972 (N. Clyde Coleman), 1 ♀ (QMB S50275), assigned tentatively; Almaden (17°21'S, 144°41'E), Mar. 1929 (W. D. Campbell), 1 ♀ (AMS KS65699), assigned tentatively; Mt. Garnet (17°41'S, 145°07'E), Feb. 24, 1972 (N. Clyde Coleman), 1 ♀ (QMB S50133), assigned tentatively.