

## *Wugigarra burgul* Huber, 2001

Huber, B. A. 2001. The pholcids of Australia (Araneae; Pholcidae): Taxonomy, biogeography, and relationships. Bull. Amer. Mus. Nat. Hist. 260: 1-144.

p. 49

### *Wugigarra burgul*, new species

Figures 164–169

TYPE: Male holotype from 3.0 km W of Cape Tribulation (16°05'S, 145°27'E), Queensland, Australia; 500 m elev., Oct. 2, 1982 (G. Monteith, D. Yeates, G. Thompson), in QMB (S34659).

ETYMOLOGY: In Yidini, the aboriginal language of the Cairns-Yarrabah region, *burgul* is a mythical being, believed to be able to take on any form. The species name is a noun in apposition.

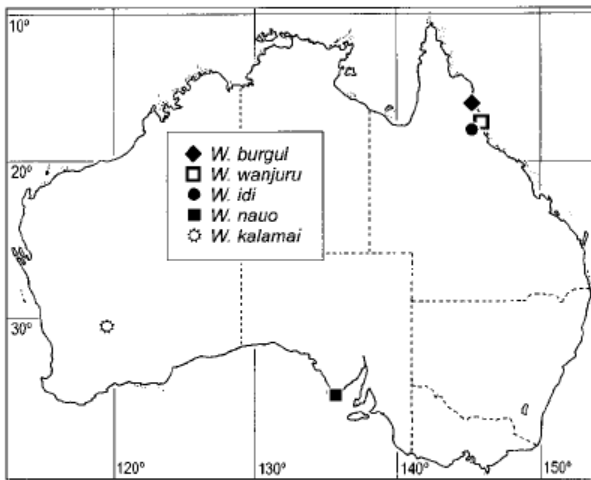
DIAGNOSIS: Easily distinguished from most congeners by the male chelicerae (several cones; fig. 165); from *W. idi* (which has very similar chelicerae) by the procurus (shorter and very different tip; figs. 167–169), and by the simpler bulb (compare figs. 159 and 166).

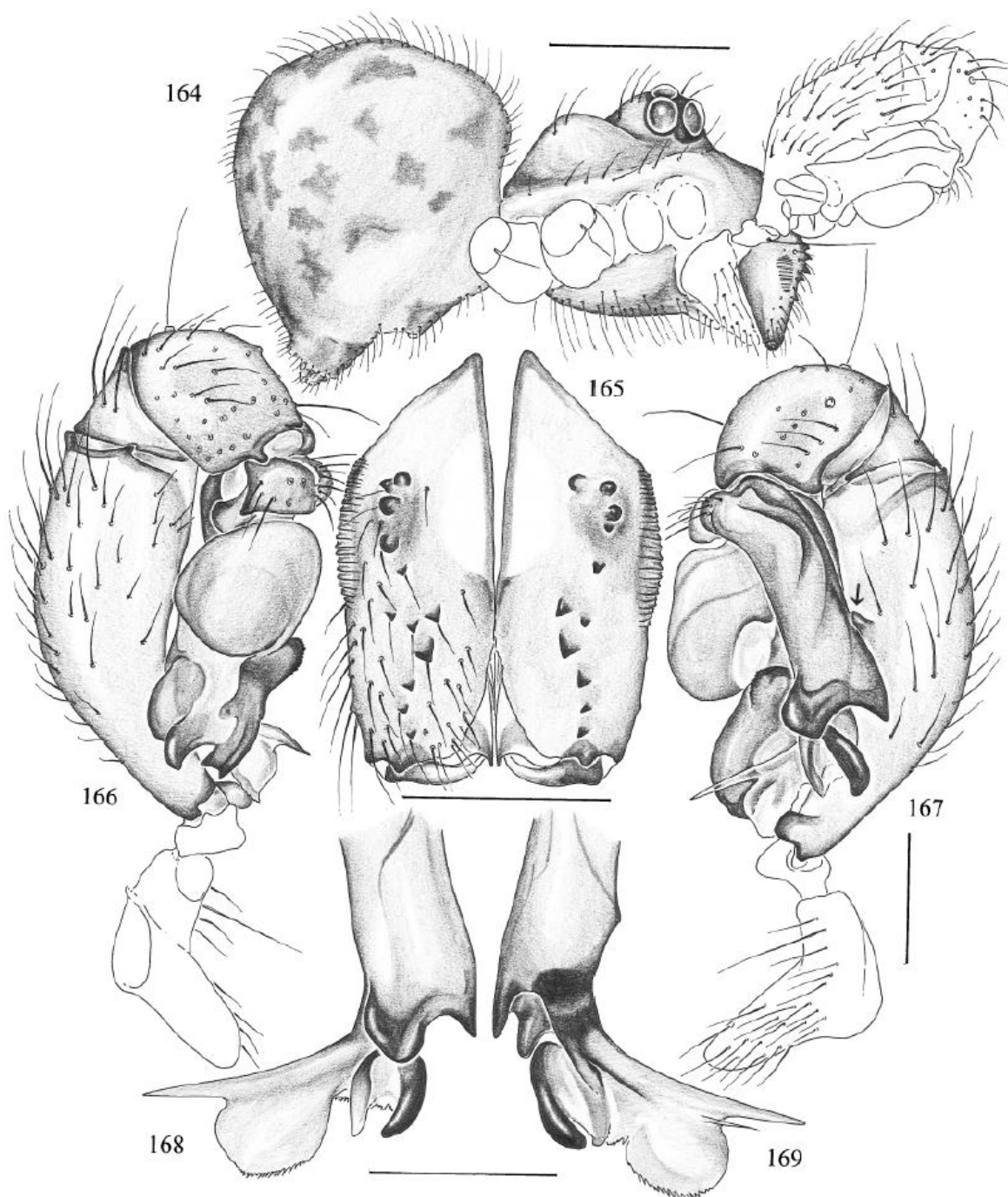
MALE (holotype): Total length 1.4 (1.6 with clypeus), carapace width 0.72. Leg 1 missing, tibia 2: 2.24, tibia 3: 1.56, tibia 4: 2.24. Habitus as in fig. 164. Prosoma shape similar to *W. undanbi* (cf. figs. 69, 70), but carapace less elevated; carapace ochre, without dark marks. Ocular area ochre; distance PME-PME 0.095; diameter PME 0.075; distance PME-ALE 0.035; diameter AME 0.025. Clypeus slightly darker than carapace; sternum brown. Chelicerae light brown, with several small cones (fig. 165), proximal cones on slight elevation. Palps as in figs. 166 and 167, femur with distinct retrolatero-ventral apophysis (arrow in fig. 167), procurus tip as in figs. 168 and 169. Legs ochre, with indistinct darker rings subdistally on femora and tibiae; without spines, curved, and vertical hairs (legs 1 missing). Opisthosoma shape as in fig. 164, gray with large blackish spots except ventrally; genital plate light brown, trapezoidal; light brown plate in front of spinnerets.

FEMALE: Unknown.

DISTRIBUTION: Known only from type locality in northeastern Queensland (map 8).

MATERIAL EXAMINED: AUSTRALIA: Queensland: 3.0 km W of Cape Tribulation: Male holotype above.





Figs. 164–169. *Wugigarra burgul*, male. **164.** Habitus, lateral view. **165.** Chelicerae, frontal view. **166, 167.** Left palp, prolateral (166) and retrolateral (167) views; arrow: femur apophysis. **168, 169.** Tip of left procurus, retrolateral (168) and prolateral (169) views. Scale lines: 0.5 mm (164), 0.2 mm (165–169).