

Wugigarra mamu Huber, 2001

Huber, B. A. 2001. The pholcids of Australia (Araneae; Pholcidae): Taxonomy, biogeography, and relationships. Bull. Amer. Mus. Nat. Hist. 260: 1-144.

p. 14

Wugigarra mamu, new species

Figures 13–16

TYPE: Male holotype from Bellenden Ker Range, Cableway Base Stn (17°16'S,

145°54'E), 100 m elev., Queensland, Australia; Oct. 17–24, 1981 (Earthwatch/QMB), in QMB (S27760).

ETYMOLOGY: Named for the Mamu, aboriginal rainforest dwellers in northeastern Queensland. The species name is a noun in apposition.

DIAGNOSIS: Distinguished from most congeners by the modified male clypeus (cf. figs. 2–4), from all known congeners (including the very similar *Wugigarra tjapukai*) by the shapes of procurus tip (figs. 13, 14) and dorsodistal bulbal elements (figs. 15, 16).

MALE (holotype): Total length 2.9, carapace width 1.42. Leg 1: 38.9 (10.0 + 0.5 + 9.6 + 16.1 + 2.7), tibia 2: 6.1, tibia 3: 4.4, tibia 4: 6.4; tibia 1 l/d: 85. Habitus and prosoma shape as in *W. tjapukai* (cf. figs. 1–4), including color patterns and modified clypeus. Distance PME-PME 0.080; diameter PME 0.135; distance PME-ALE 0.095; diameter AME 0.105. Chelicerae and palps in general identical to those in *W. tjapukai* (cf. figs. 5–7), but procurus tip and dorsodistal bulbal elements significantly different (figs. 13–16). Legs as in *W. tjapukai*, including curved hairs on tibiae and metatarsi; retrolateral trichobothrium of tibia 1 at 7%; tarsus 1 with >40 distinct pseudosegments. Opisthosoma identical to that in *W. tjapukai* (cf. fig. 1).

VARIATION: Tibia 1 in 7 males: 9.6–10.9 (\bar{x} = 10.4).

FEMALE: In general very similar to male; tibia 1 in 8 females: 8.1–9.5 (\bar{x} = 8.6). Epigynum externally not distinguishable from that of *W. tjapukai* (cf. fig. 8).

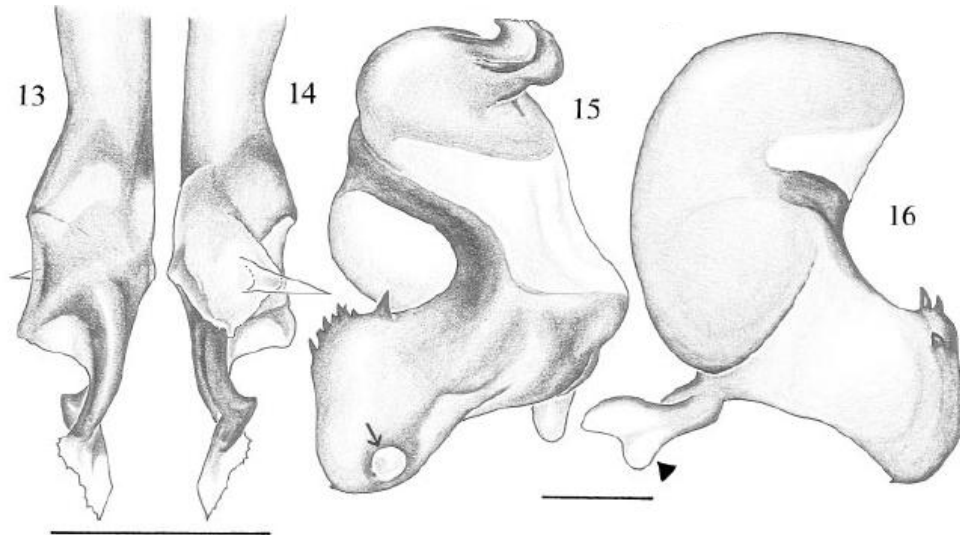
DISTRIBUTION: Known only from the Bellenden Ker Range area near Cairns, northeastern Queensland (map 5).

MATERIAL EXAMINED: AUSTRALIA: Queensland: Bellenden Ker Range, Cableway Base Stn: Male holotype above, with 3 ♀ 1 juvenile (QMB S34665); Bellenden Ker Range, Westgid Creek (N Branch) (17°16'S, 145°54'E), 100 m elev., Nov. 1, 1981 (Earthwatch/QMB), 1 ♂ (QMB S26257); Bellenden Ker Range, 0.5 km S of Cable Tower No. 7 (17°16'S, 145°51'E), 500 m elev., Oct. 17–24, 1981 (Earthwatch/QMB), 5 ♂ 3 ♀ (QMB S50181); same data but Oct. 25–31, 1981: 3 ♀ 5 juveniles (QMB S50182); same data but Nov. 1–7, 1981: 1 ♂ 2 ♀ (QMB S50239);

p. 15

Russell R. at Bellenden Ker Landing (17°16'S, 145°57'E), 5 m elev., Nov. 1–9, 1981 (Earthwatch/QMB), 1♂ 1♀ (QMB S50246); Graham Range (17°17'S, 145°58'E), 550 m elev., Nov. 1, 1995 (G. Monteith), "Pyrethrum, trees and logs", 1♂ 2♀ (QMB S43364).

p. 17

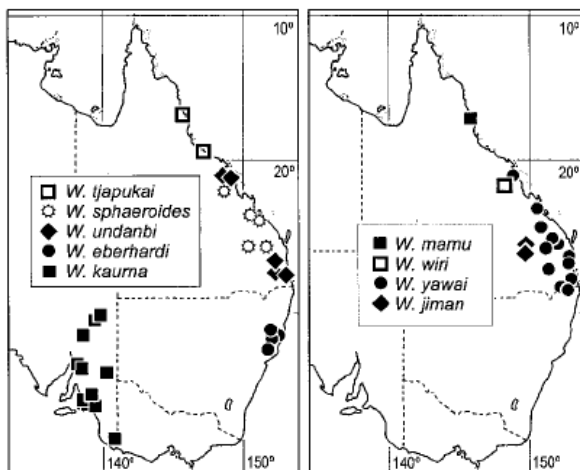


Figs. 10–16.

W. mamu, n. gen., n. sp. (13–16).

13, 14. Tip of left procurus, retrolateral (13) and prolateral (14) views. **15, 16.** Left genital bulb, dorsal (15) and prolateral (16) views; shafted arrow: sperm duct opening; unshafted arrow: worm-shaped process. Scale lines: 0.2 mm.

p. 18



Maps 4, 5. Distribution of *Wugigarra* species: *tjapukai* group.