

***Wugigarra wanjuru* Huber, 2001**

Huber, B. A. 2001. The pholcids of Australia (Araneae; Pholcidae): Taxonomy, biogeography, and relationships. Bull. Amer. Mus. Nat. Hist. 260: 1-144.

p. 49

***Wugigarra wanjuru*, new species**

Figures 170–172

TYPE: Male holotype from east margin of Palmerston National Park (17°37'S, 145°46'E), Queensland, Australia; 400 m elev., Dec. 10, 1995–Feb. 7, 1996 (G. Monteith, D. Cook), in QMB (S43258).

ETYMOLOGY: Named for the Wanjuru, aboriginal rainforest dwellers in the Innisfail and Babinda area. The species name is a noun in apposition.

DIAGNOSIS: Easily distinguished from congeners by the male chelicerae provided with a few small cones (fig. 170), and by the long

p. 50

dorsodistal projection on the procurus (fig. 171).

MALE (holotype): Total length 1.5, carapace width 0.64. Leg 1: 13.97 (3.41 + 0.27 + 3.61 + 5.51 + 1.17), tibia 2: 1.95, tibia 3: 1.32, tibia 4 missing. Habitus as in *W. burgul*

(cf. fig. 164). Prosoma shape similar to *W. undanbi* (cf. figs. 69, 70), but carapace less elevated; carapace ochre, only medially and around ocular area slightly darker. Ocular area ochre, slightly darker than carapace; distance PME-PME 0.095; diameter PME

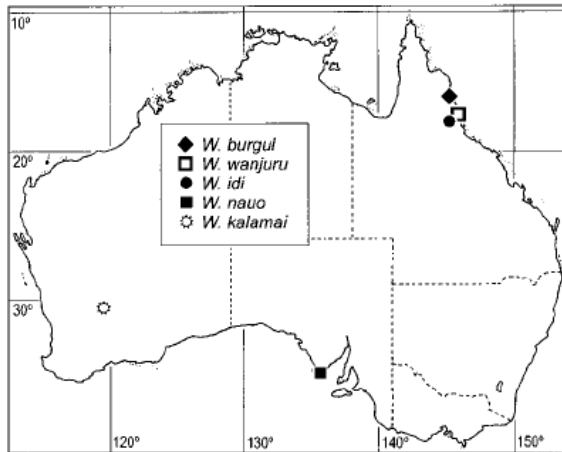
0.065; distance PME-ALE 0.025; diameter AME 0.025. Clypeus slightly darker than carapace; sternum brown. Chelicerae light brown, with some small cones and stridulatory ridges (fig. 170). Palps as in fig. 171; femur with distinct retrolateroventral apophysis (arrow in fig. 171); bulb as in figs. 171 and 172. Legs pale ochre, with indistinct darker rings subdistally on femora and tibiae;

without spines, curved, and vertical hairs (legs 4 missing). Opisthosoma shape as in *W. burgul* (cf. fig. 164), gray with blackish spots except ventrally; genital plate light brown, trapezoidal; light brown plate in front of spinnerets.

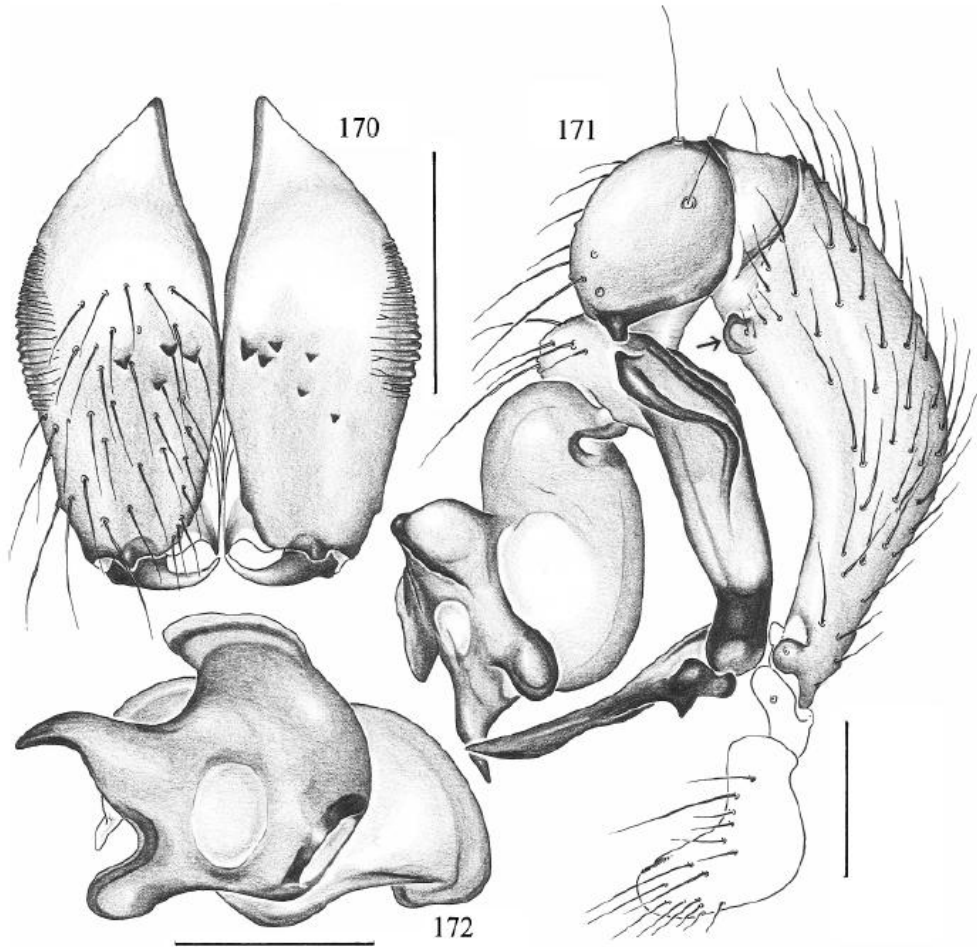
FEMALE: Unknown.

DISTRIBUTION: Known only from type locality in northeastern Queensland (map 8).

MATERIAL EXAMINED: AUSTRALIA: *Queensland*: Palmerston National Park: Male holotype above.



Map 8. Distribution of *Wugigarra* species: species assigned tentatively (*idi* group and *nauo* group).



Figs. 170–172. *Wugigarra wanjuru*, male. 170. Chelicerae, frontal view. 171. Left palp, retrolateral view (note that the genital bulb is rotated out of its natural position); arrow: femur apophysis. 172. Left genital bulb (view not clear). Scale lines: 0.2 mm.