

***Pholcus andulau* Huber, 2011**

**Huber, B. A. 2011.** Revision and cladistic analysis of *Pholcus* and closely related taxa (Araneae, Pholcidae). *Bonner zool. Monographien* 58: 1-510.

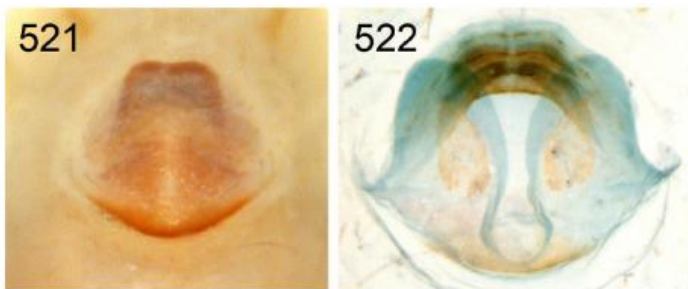
p. 127



502-504. *Ph. andulau*, male, dorsal and lateral views; female abdomen, ventral

view.

p. 128



521, 522. *Ph. andulau*.



FIG. 529. Known distribution of the *Pholcus halabala* species group.

*Pholcus andulau* n. sp.

Figs. 502-504, 521, 522, 570-574

*Type.* Male holotype from Brunei, Tutong District, Andulau Forest Reserve, Bukit Udal, Jalan Kechil Bukit Kubok (4°42.6'N, 114°37.6'E), 22.iv.2006 (J.K.H. Koh, 06.04.22.1011), in BMKB.

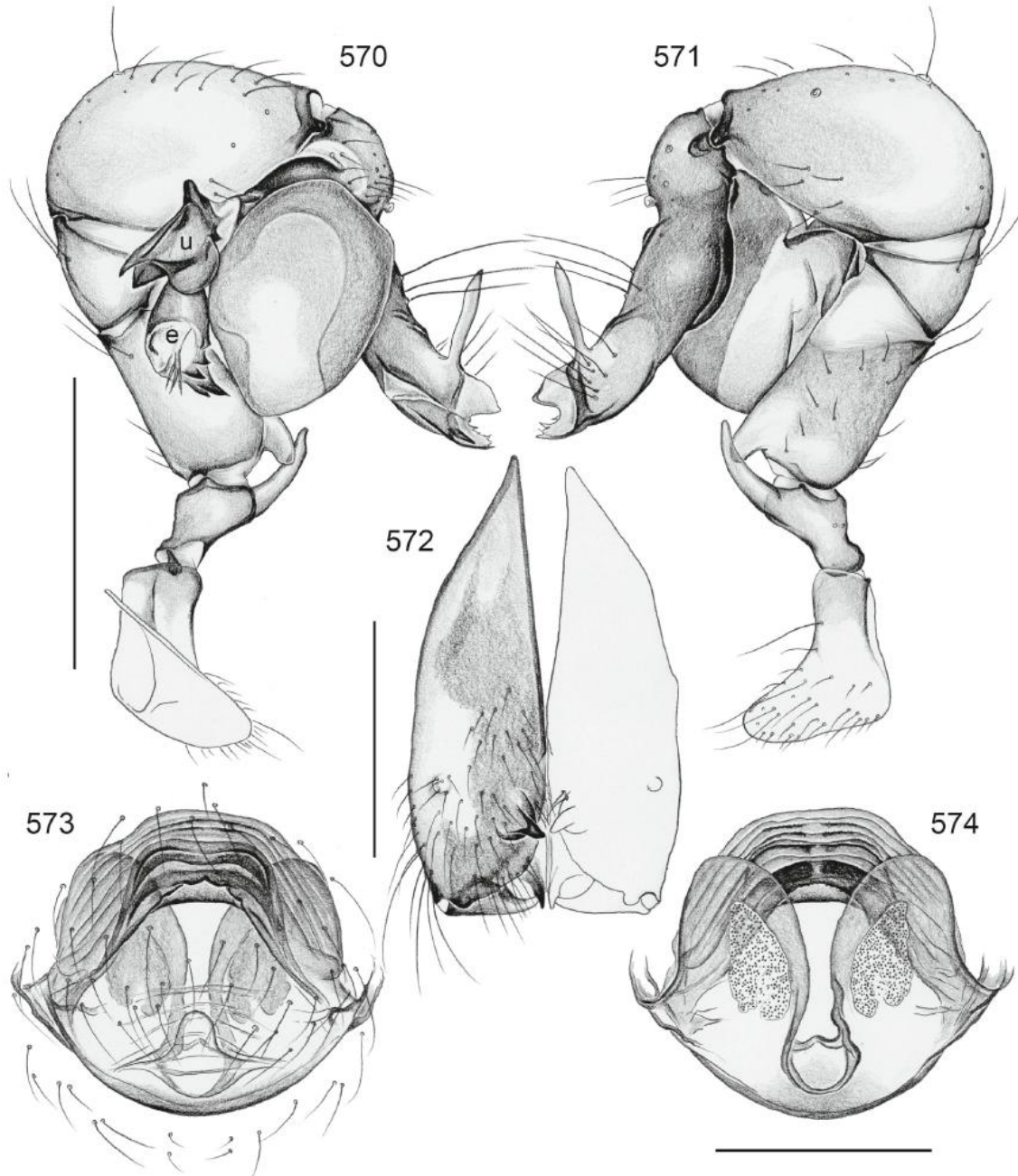


FIG. 570-574. *Pholcus andulau*. 570, 571. Left male palp, prolateral and retrolateral views. 572. Male chelicerae, frontal view. 573, 574. Cleared female genitalia, ventral and dorsal views. Scale lines: 0.5 (570, 571), 0.3 (572-574).

*Etyymology.* The specific name is a noun in apposition, derived from the type locality.

*Diagnosis.* Easily distinguished from known congeners by dorsal process on procurus (Fig. 571), shapes of bulbal processes (especially embolus with sclerotized pointed teeth, Fig. 570), male cheliceral armature (Fig. 572), and female internal genitalia (Fig. 574).

*Male* (holotype). Total body length 4.4, carapace width 1.1. Leg 1: 45.1 (10.3 + 0.5 + 10.5 + 21.6 + 2.2), tibia 2: 6.5, tibia 3: 3.6, tibia 4: 5.8, tibia 1L/d: 103. Habitus as in Figs. 502 and 503. Carapace pale ochre-yellow with indistinct V-mark posteriorly, ocular area and clypeus darker brown, sternum whitish, legs pale ochre-yellow, patella area and tibia-metatarsus joints brown, abdomen ochre-gray with dark dorsal spots posteriorly, ventrally monochromous (cf. female, Fig. 504). Distance PME-PME 250  $\mu$ m, diameter PME 125  $\mu$ m, distance PME-ALE 35  $\mu$ m, AME absent, only some pigment on elevated AME-area, no lenses. Ocular area without longer hairs posteriorly, each triad on short stalk. No thoracic furrow; clypeus unmodified. Chelicerae as in Fig. 572, distal apophyses without modified hairs, proximal apophyses very indistinct. Sternum wider than long (0.65/0.60), unmodified. Palps as in Figs. 570 and 571, coxa unmodified, trochanter with long retrolatero-ventral apophysis, femur with very distinctive protuberance directed proximally, procurus with distinctive semitransparent dorsal process, bulb with two processes: complex embolus, partly sclerotized with strong teeth, and small but complex uncus; without appendix. Legs without spines and curved hairs, few vertical hairs. Retrolateral trichobothrium on tibia 1 at 2%; prolateral trichobothrium absent on tibia 1, present on other tibiae; pseudosegments not visible in dissecting microscope.

*Variation.* Tibia 1 in other male: 10.9 (missing in third male). The male from Sarawak is paler, has no mark on the carapace, and a monochromous abdomen, but has almost identical palpal structures (only teeth on embolus slightly more regular). The male from Lakiun Camp differs more in palpal structures: prolatero-distal spine on procurus stronger, dorsal process on procurus stronger, and teeth on embolus stronger and more regular.

*Female.* In general similar to male but eyes not on stalks, triads closer together (distance PME-PME 195  $\mu$ m). Tibia 1 in 2 females: 7.2, 7.6. One female with very dark clypeus. Epigynum a simple flat plate, very small relative to abdomen (Fig. 504), anterior

internal arc visible through cuticle (Figs. 521, 573), internal genitalia as in Figs. 522 and 574.

*Distribution.* Known from Brunei and one neighboring locality in Sarawak (Fig. 529).

*Material examined.* BRUNEI: *Tutong District:* Andulau Forest Reserve: ♂ holotype above. *Belait District:* Kampong Sukang (4°18.6'N, 114°37.7'E), secondary forest foliage, 6.vii.2006 (J.K.H. Koh, 06.07.06.0002), 1♀ in BMKB. *Temburong District:* Lakiun Camp [-4°45'N, 115°08'E], 5.ii.2005 (J.K.H. Koh, 05.02.05.0101), 1♂ in ZFMK; Temburong, Kampong Selapong [-4°41'N, 115°12.5'E], secondary forest, 15.iv.2006 (J.K.H. Koh, 06.04.15.1008), 1♀ in ZFMK.

MALAYSIA-BORNEO: *Sarawak:* "Mulu-Expedition" [Gunung Mulu N.P., ~4°06'N, 114°54'E], "Karangas slopes", shrub layer, 8.v.1978 ("F.W."), 1♂1♀ in RMNH.